



2015 Economic and Financial Review

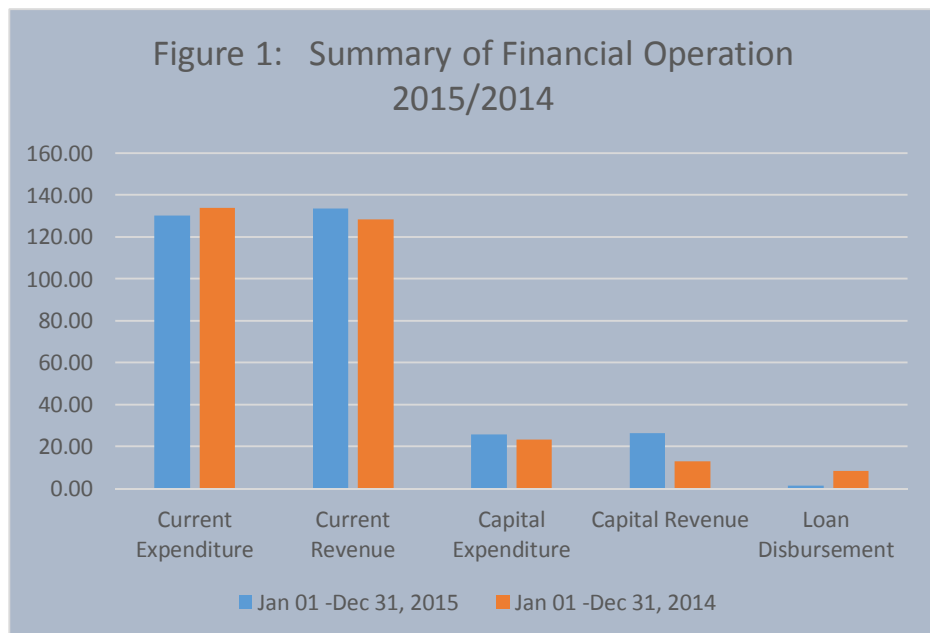
MINISTRY OF FINANCE
NEVIS ISLAND ADMINISTRATION

OVERVIEW

This report provides an update on the fiscal performance of the NIA and the economic performance of the major sectors in Nevis for the period January to December 2015. The year has proven to be an exceptional one, with an overall improvement in the performances of the various sectors. Similarly, the fiscal performance of the government was one with increased revenue collection and a slight reduction in the expenditure outlay.

FISCAL AND DEBT

The fiscal outcome for the period in review surpassed all expectations. A deficit of \$19.99 million was budgeted for the year; however, the actual balance recorded for the year was a surplus of \$4.08 million. (See table 1). The overall balance was a result of



a capital surplus of \$0.71 million and a surplus of \$3.37 million on the current account. The previous year (2014) recorded an overall deficit of \$15.91 million. Similarly, there was a deficit on both capital and current accounts of \$10.39 million and \$5.53 million respectively.

Current revenue collection for the year increased by 4.19 percent or \$5.39 million relative to 2014. The actual collection was \$133.86 million. The major contributors to the revenue for the period were social services levy, stamp duties, value added tax, import duties and financial services fees. Additionally, grant funds from the Federal Government was \$25 million. This resulted in a total revenue amount of \$158.86 million.

Current expenditure saw a decline when compared to 2014; moving from \$134.00 million to \$130.49 million. The budgeted current expenditure was \$133.91 million. Total expenditure

(current and capital expenditure) declined from one year to the next; moving from \$157.54 million to \$156.42 million in 2015. The various categories under current expenditure had minimal variances from one period to the next. (See table 3)

In 2015, the major debt activities that took place were the finalization of the restructuring with the Kuwait Fund and National Bank. Additionally, disbursements for the Nevis Water Enhancement Project continued and a final payment was made to the European Investment Bank loan.

At the end of December 2015, the NIA's debt increased to \$343 million from \$329 million in December 2014. The domestic portion of the debt increased by 6 percent; moving from \$275 million in 2014 to \$291 million in 2015. The increase in domestic debt was due to the increase in the 91 day Treasury bills and capitalised interest at National Bank, resulting from non-payment of the loans. External debt decreased by 0.03 percent over the similar period, moving from \$53 million to \$51 million.

CAPITAL PROJECTS

During the fiscal year 2015, the upgrades of police services was a major undertaking within the Premier's Ministry. The project commanded \$0.16 million or 73.22 percent of the monies expended by the ministry. Similarly, vehicle payments and maintenance claimed the majority of funds under the Ministry of Finance. These payments were computed at \$0.45 million 32.21 percent of the Ministry's expended sum. Conversely, statistical surveys claimed the least, securing \$0.02 million or 1.65 million. In total, \$1.40 million was expended by the ministry for the year in review.

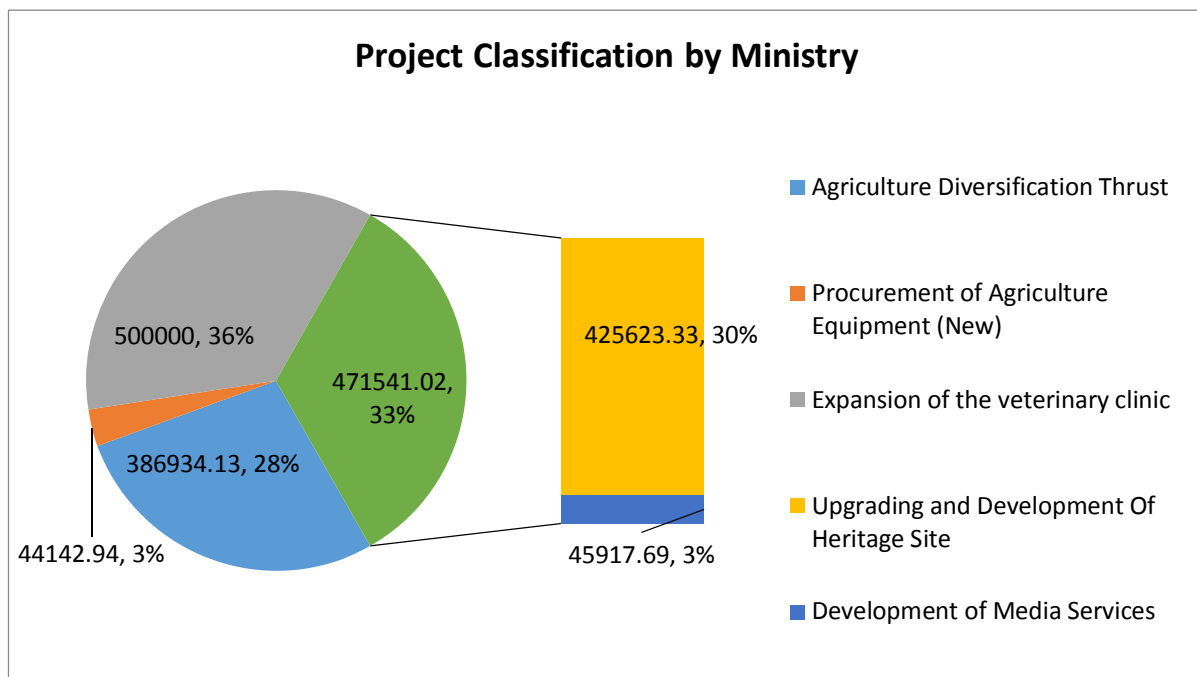
The Ministry of Communications, a critical ministry for development, has managed to not only secure the majority of all the ministries for the year in review, but also for the fiscal year that preceded. The ministry has managed to secure \$9.55 million in 2014; 64.27 percent of the period's total expenditure. This amount grew to \$16.36 million or 68.51 percent in 2015. The venture that commanded the bulk of the funds was the Major Road Projects, the project secured \$4.00 million or 24.46 percent of the annual actuals.

The Ministry of Agriculture and Tourism, two of the more critical sectors on the island, expended \$1.40 million for the year in review. Tourism, the main economic driver and leading sector,

expended a marginal \$0.47 million. The project that secured the majority of the funds was the development and upgrades made to the Heritage Site.

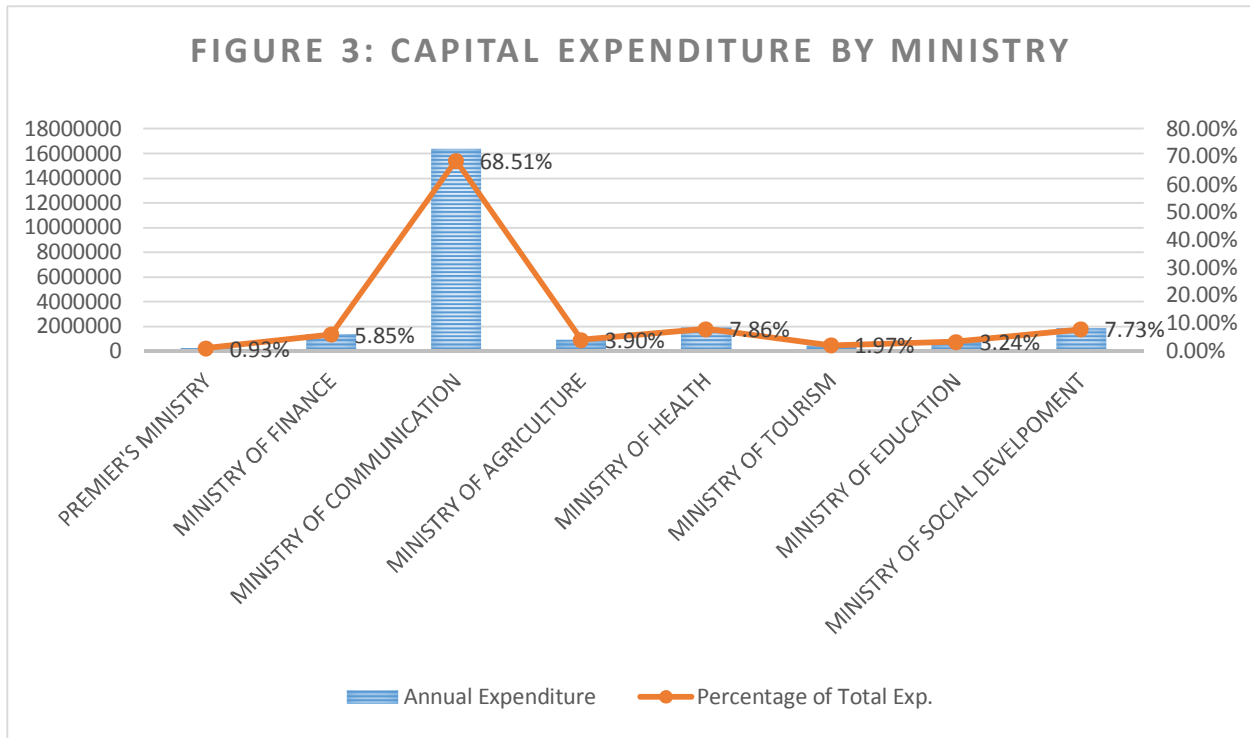
Agriculture, the sector that has the ability to reduce the import bill, was apportioned \$0.93 million for the year in review. Within the sector, the expansion of the veterinary clinic received funding in the amount of \$0.50 million. Other ventures funded include the procurement of Agricultural equipment and the funding of the Agricultural Diversification Trust.

Figure 2 displays an outlay of projects for both the Ministry of Agriculture and the Ministry of Tourism. The circular chart represents the Ministry of Agriculture and its rectangular counterpart represents the Ministry of Tourism.



Invested in the areas of Education and Health, critical sectors for social development, was \$2.65 million. The Ministry of Education secured \$0.77 million and the Ministry of Health received \$1.88 million. In the area of education, the majority of the funds were geared toward the Expansion of the Joycelyn Liburd Primary School. This project received \$0.55 million and funds were apportioned to the construction of a school cafeteria. Likewise, the Nevis Environment Work program procured the majority of the monies expended under the Ministry of Health. The project received a sum of \$0.70 million or 37.25 percent of the annual expenditure.

On review of the Ministry of Social Development, what stood out was the priority set for the improvements and maintenance of sporting facilities. The project has been a priority since 2014 and secured a total of \$1.07 million or 57.81 percent of the expended total under this ministry. Combined, all projects within this ministry have secured a total of \$1.85 million.



EMPLOYMENT

The employment data for the review period showed that the number of employed persons on Nevis ranged from 4,930 (December) to 5,467 (August), with an average of 5,334 employed persons. The average number of employed persons for the same period in 2014 was 5,154. This indicates that there was a 3.5 percent (180) growth in the average number of employed persons in 2015 relative to 2014.

The average number of Jobs grew by 5 percent from 5,467 jobs per month in 2014 to 5,650 per month in 2015. One can say that 183 additional jobs were provided in 2015 compared to the same period last year. Average Monthly Wages grew by 7 percent (\$1.12 Million) from \$15.94 Million per month in 2014 to \$17.06 Million per month in 2015. The positive growth in this area coincides with a similar growth in social services levy, the tax that is driven by employment on the island.

TOURISM

The annual tourism preliminary statistics display a pattern of growth, subsequent to 2014 when analysing the data collected from the Vance Amory International Airport (VAIA) as well as visitors arriving via the Robert Llewellyn Bradshaw (RLB) International Airport destined to Nevis.

During the period, a total of 36,221 visitors (excluding residents) visited the shores of Nevis via air, a 10.49 percent increase relative to the fiscal year 2014. Conversely, the quantity of cruise and yacht arrivals fell in 2015, declining from 11,022 to 9984 or 9.42 percent. Combined, the visitor arrivals via air and sea grew by 1.07 percent for the period under review.

The total passengers (resident and non-residents) arriving via air at the VAIA, fluctuated during the year, recording 916 in January and 1208 in December of 2015. The month of June recorded the lowest arrival for the year; 519 passengers. (See figure 4)

The total aircrafts landing on the Island for the year was 3647.

Figure 4

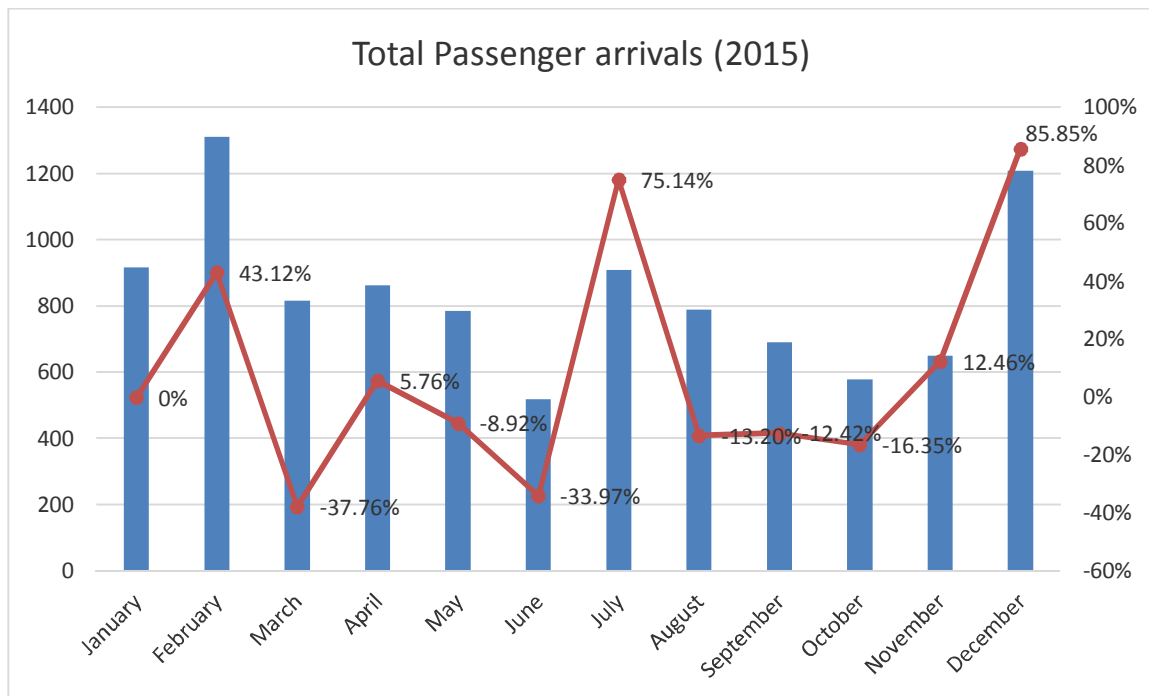


Chart showing the preliminary passenger arrival trend in the fiscal year 2015. The line represents the percentage change from one month to the next.

There was an influx of Cruise and Yacht passengers in 2015; totalling 9,984; a 9.42 percent decline relative to the period that preceded. Of the 9,984, 6,696 was the result of Cruise arrivals and the remaining 3,288 was owed to the arrival of Yachts.

The total yacht calls for the period was 743, a 2.77 percent increase over the previous period. The arrival of yacht passengers however, fell by 45.16 percent despite the growth in calls. Similarly, there was a total of 64 cruise calls for the period; a growth of 68.42 percent. However, the actual cruise passenger arrivals fell by 33.23 percent when compared to the previous year (2014). (See table 1)

Table 1: Cruise and Yacht Passenger Arrival (2015/2014)

PERIOD	Yacht Passenger (2014)	Yacht Passenger (2015)	Variation	Cruise Passenger (2014)	Cruise Passenger (2015)	variation2
QTR1	3589	1,712	-52.30%	2565	4,713	83.74%
QTR2	1266	801	-36.73%	102	354	247.06%
QTR3	381	342	-10.24%	0	0	-
QTR4	760	433	-43.03%	2359	1629	-30.95%
Total	<u>5996</u>	<u>3,288</u>	<u>-45.16%</u>	<u>5026</u>	<u>6,696</u>	<u>33.23%</u>

In tourism, one of the more critical elements that determine economic growth, the Stay-over arrivals, have made some significant strides. These arrivals recorded a substantial 35,907 in 2015. 6,534 were stay-overs arriving from the Vance Amory International airport and 29,373 arrived via the RLB International Airport. When compared to 2014 the arrivals grew by 9.81 percent, increasing from 32,701 to 35,907. The total stay over arrivals represents 99.13 percent of the total visitor arrivals for the period under review.¹

¹From the month of May (FY 2015) the stay-over arrival figures have been estimated using the time series analysis method, dating back three years. When the actual data becomes available the figures will then be amended.

Total excursionists arriving via the Vance Amory International Airport was 314. (See table 2 and Figure 2 below)

Table 2

Year	2014P	2015P	Variation
Stay-Over Arrivals	32,701	35,907	9.81%
Excursionists	81	314	287.65%

Table 2 provides the preliminary(P) Excursionist and stay-over arrival figures for 2014 and 2015

Figure5

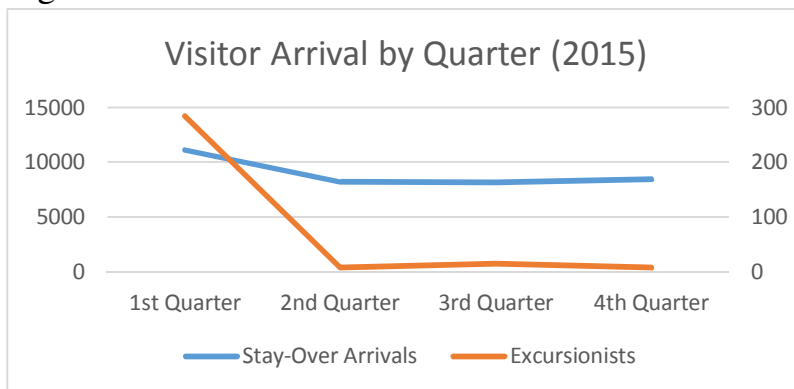


Figure displays both the Stay-over and excursionist arrivals in the fiscal year, 2015. The Stay Over arrival figures are plotted on the primary axis, whilst the excursionists are plotted on the secondary.

The year 2015 was a good year for the Nevis Tourism Authority (NTA). It was a year marked by progress in the area of promotional activities and initiatives. As a result, the NTA is well positioned to capitalize on the bounty of opportunities in 2016.

In North America a new sales representative was engaged to foster closer relationships with key travel professionals in the Northeast. The sales representative works the Northeast region of the USA as this is the most significant source market for travellers to Nevis. Efforts were also geared toward increasing the presence of Caribbean residents on the island through increased promotions in Puerto Rico and most of the hotels on Nevis has testified that in 2015 they experienced increased sales from the UK market. Additionally, the NTA has been able to attract some good media exposure, through its public relations personnel; this includes the push for association with Alexander Hamilton the Broadway play. The NTA's social media presence is now stronger than

ever before. Facebook, Instagram and Twitter are utilized with good results and steady growth in followers.

Nevis is blessed with a host of events which are perfect to attract travellers and the NTA supports them regularly. These include the Blues Festival, the Nevis to St. Kitts Cross Chanel Swim, the Nevis Mango and Food Festival, Culturama, the Nevis Marathon and Running Festival, and the Nevis Triathlon. We launched the Nevis Romance Symposium in October of 2015 as an annual event to solidify Nevis’ relationship with travel professionals who focus on selling romance.

There is a significant improvement in the relationship between the Authority and the various airlines. Seaborne continues to fly its scheduled route from Puerto Rico. Cape Air experienced some unexpected operational issues and had to suspend its service but through the services of Caribbean Helicopters we re-established our link with Antigua and will soon extend that connection to other islands through LIAT. Winair now has daily service between Nevis and St. Martin. There is also now relationships with international airlines, including British Airways and Delta Airlines; both of which the NTA had the opportunity to meet with in the fall.

The combination of these new relationships, initiatives, and heightened productivity from the team locally and internationally has placed our tourism product in a more lucrative position in comparison to 2014.

FINANCIAL SERVICES

During 2015, total new incorporations amounted to 2,143. A breakdown by product type for the years 2015 and 2014 is given in figure 4.

There was a 20 percent reduction in incorporations for this period. For the year 2015, incorporations fell in every product type reported except Foundations which increased by 7 percent. The largest percentage decrease was seen in Trust incorporations which fell by 46 percent. LLCs fell by 33 percent, and IBCs fell by 21 percent.

<i>Product Type</i>	<i>2015</i>	<i>2014</i>
<i>IBCs</i>	1365	1669
<i>LLCs</i>	661	868
<i>Trusts</i>	90	131
<i>Foundations</i>	27	25
<i>Total</i>	2143	2693

Figure 3: 2015 and 2014 Incorporations

Conversely, total revenue generated by the Department for the year increased by 8 percent. During 2014, the Department generated \$12.8 million, while \$13.9 million was generated in 2015. This was mainly due to increases in renewal fees and late payment penalties; 9 and 12 percent respectively.

There was an 11 percent increase in entities dissolved over that of 2014. There has also been a 27 percent increase in entities that were struck. Conversely, there was a 20 percent decline in entities reinstated. All of these factors affect the total number of active entities registered. As of January 6th 2016, there were seventeen thousand six hundred and seventy-five (17,675) active entities on the register.

AGRICULTURE

Throughout the year in review, the Ministry of Agriculture continued to keep a keen “eye on agriculture” and embarked on a number of activities which promoted agriculture on a wider scale. Below is a list of activities crafted by the Department of Agriculture to ensure that production and productivity increased; thus, resulting in enhanced quality and quantity in agricultural products on the island:

- January 2015 – The Ministry held an event to assure farmers that the NIA will share the burden of the increased cost of animal feed by suppliers.
- March 2015 - Annual Agriculture Open Day: This was geared towards strengthening the drive towards food security on the island. Deservingly, a number of persons involved in the Agriculture Industry were honored for their contribution to the development of the sector.
- May 2015- Third Annual Agriculture Awareness Month: The month of May was marked as the busiest month for the Ministry. There were different areas of activities ranging from crop and livestock production to greenhouse technology and fishing. This ensured the continued diversification of the agricultural landscape of Nevis. To culminate the month, the Ministry of Agriculture launched its website, www.nevisagriculture.com. The launch

of this website underscored the thrust of the Ministry and Department of Agriculture towards ensuring that food safety and security continue to be the major pillars in the success of this important industry.

- December 2015 – “The Way Forward for Breadfruit and Breadnut” Workshop: the breadfruit and breadnut crops were selected by the Food and Agriculture Organization (FAO) and the Ministry Agriculture to help improve food security on the island. The project is a long term project which is deemed viable once implemented effectively and is expected to provide food for the next 50 years.

Boosting production has continued to be the primary focus for the Ministry of Agriculture. The necessary resources, equipment and new technology are made available for all farmers and stakeholders involved.

Despite the challenges that agriculture faced during the period in review, the level of optimism is high due to the rekindled interest in farming and the involvement of the younger generation to the development of the industry. The future for agriculture looks bright and the Ministry of Agriculture is positive that agriculture could be restored to being the “breadbasket” of the Federation as in former days.

CONCLUSION

A brief assessment of the various ministries reveal fiscal prudence in the execution of capital projects for the fiscal year, 2015. The financial assistance given by the Federal Government was beneficial in ensuring the continuity and commencement of these projects. Additionally, the Ministry of Finance continue to encourage all ministries and departments to prioritize and curtail spending. This is crucial in ensuring that the road ahead is one of sustainability and growth.

Appendix

Table 1: FINANCIAL SUMMARY

ITEMS	Annual	Annual	Annual	Annual
	2015	2014	2015/2014	2015/2014
	Prelim. Actual	Actual	Variance	Variance
	\$	\$	\$	%
Revenue				
Capital Revenue	26,640,030	13,163,251	13,476,779	102.38
Sale of Assets	-	100,000	(100,000)	-
Loans	1,640,030	8,633,139	(6,993,109)	(81.00)
Development Aide	25,000,000	4,430,112	20,569,888	464.32
Current Revenue	133,857,250	128,468,450	5,388,800	4.19
Total Revenue	160,497,281	141,631,701	18,865,580	13.32
Expenditure				
Capital Expenditure	25,927,065	23,548,636	2,378,429	10.10
Revenue	23,787,035	14,556,670	9,230,364	63.41
Loans	1,640,030	8,633,139	(6,993,109)	(81.00)
Development Aide	500,000	358,827	141,173	39.34
Current Expenditure	130,488,336	133,995,785	(3,507,449)	(2.62)
Total Expenditure	156,415,401	157,544,421	(1,129,020)	(0.72)
Capital Surplus (Deficit)	712,965	(10,385,385)	11,098,351	(106.87)
Current Surplus (Deficit)	3,368,914	(5,527,335)	8,896,249	(160.95)
Total Surplus (Deficit)	4,081,880	(15,912,720)	19,994,600	(125.65)

Source: Ministry of Finance

Table 2: NIA REVENUE JAN-DEC 2015/2014 (Economic Classification)

	2015	2015	2014	2015/2014	2015/2014
Categories	Annual	Annual	Annual	Annual	Annual
	Budget	Prelim Actual	Actual	Variance	Variance
	\$	\$	\$	\$	%
Total Revenue and Grant	133.53	158.86	132.90	25.96	19.53
Current Revenue	130.06	133.86	128.47	5.39	4.19
Tax Revenue	96.06	100.66	98.29	2.37	2.41
Taxes on Income & Profits	14.25	16.90	13.01	3.90	29.96
Corporate Income Tax	5.50	4.11	4.20	-0.09	-2.21
Withholding Tax	0.25	0.09	0.33	-0.23	-71.35
Social Services Levy	8.50	12.70	8.48	4.22	49.82
Taxes on Property	3.00	2.72	2.56	0.16	6.33
Property Tax	3.00	2.72	2.56	0.16	6.33
Taxes on Domestic Goods & Services	36.31	40.29	41.86	-1.57	-3.75
Wheel Tax	2.20	2.19	1.96	0.23	11.89
Consumption Tax (Inland Rev.)	0.00	0.01	0.00	0.01	682.10
Traders Tax	0.00	0.00	0.00	0.00	-31.44
Stamp Duties	12.50	16.25	15.79	0.46	2.91
Coastal Environmental Levy	0.20	0.30	0.50	-0.20	-40.32
Insurance Levy/Fees	0.41	0.46	0.39	0.07	17.99
Gasoline & Diesel Levy	0.00	0.00	0.00	0.00	0.00
Un Incorporated Business Tax	1.25	1.34	1.14	0.20	17.92
VAT	18.25	17.70	20.05	-2.34	-11.69
Licenses	1.50	2.03	2.03	0.00	0.16
of which: Banks Licence	0.12	0.11	0.11	-0.01	-5.26
Business & Occupation Licence	0.47	0.58	0.47	0.11	23.58
Drivers Licence	0.69	0.68	0.65	0.03	5.28
Taxes on International Trade	42.49	40.74	40.86	-0.12	-0.29
Import Duties	10.66	11.58	10.62	0.96	9.05
Excise and Export Duty	5.19	3.95	3.79	0.16	4.11
Environmental Levy	0.67	1.86	0.76	1.11	146.80
Consumption Tax	0.20	0.21	0.04	0.17	435.98
Travel Tax	0.32	0.26	0.27	-0.01	-3.01
Customs Service Charge	7.44	7.38	6.25	1.13	18.05
VAT	18.00	15.50	19.13	-3.63	-18.99
Non-Tax Revenue	34.00	33.19	30.18	3.02	9.99
Interest, Dividend & Currency Profits		0.00	0.00	0.00	-92.77
Rent of Government Property	0.42	0.03	0.27	-0.24	-90.36
Fees, Fines & Sales	0.26	0.18	0.20	-0.02	-10.57
Post Office	0.41	0.39	0.42	-0.03	-7.35
Passport, Permits, etc.	0.00	1.37	1.25	0.12	9.65
Hospital	1.00	0.66	0.68	-0.02	-3.00
Financial Services	13.50	13.84	12.76	1.08	8.45
Supply Office	8.00	8.39	7.34	1.05	14.25
Water Service	6.51	5.65	5.20	0.45	8.70
Other Non-Tax Revenue	3.91	2.69	2.06	0.63	30.83

Source: Ministry of Finance

Table 3: NIA EXPENDITURE JAN - DEC 2015/2014 (Economic Classification)

EC\$	2015	2015	2014	2015/2014	2015/2014
Categories	Annual	Annual	Annual	Annual	Annual
	Budget	Prelim Actual	Actual	Variance	Variance
	\$	\$	\$	\$	%
Current Expenditure	122.11	123.51	124.79	-1.29	-1.03
Personal Emoluments	66.78	65.29	64.89	0.39	0.60
Salaries	46.60	42.14	42.74	-0.60	-1.40
Wages	19.30	22.19	21.23	0.96	4.52
Allowances	0.88	0.95	0.92	0.03	3.41
Goods and Services	29.07	30.27	31.03	-0.75	-2.43
Interest Payments	14.81	15.46	16.69	-1.22	-7.34
Domestic	12.63	14.48	14.71	-0.23	-1.60
Foreign	2.18	0.99	1.98	-0.99	-50.08
Principal Repayment	11.80	6.98	9.20	-2.22	-24.14
Domestic	8.46	2.96	6.00	-3.04	-50.64
Foreign	3.34	4.02	3.20	0.82	25.48
Transfers & Subsidies	11.44	12.49	12.18	0.30	2.47
Pensions	7.00	6.10	6.33	-0.23	-3.68
Gratuities	0.00	1.84	1.60	0.24	15.22
Regional and Int'l Contributions	3.13	3.26	3.29	-0.04	-1.10
Public Assistance	1.32	1.28	0.96	0.33	34.04
Current Account Balance	7.95	10.35	-0.27	6.67	-2,489.03
Capital Revenue	0.00	0.00	0.00	0.00	0.00
Land Sales	0.00	0.00	0.00	0.00	0.00
Other	0.00	0.00	0.00	0.00	0.00
Grants	3.47	25.00	4.43	20.57	464.32
Budgetary Grants	0.00	25.00	4.43	20.57	0.00
Capital Grants	3.47	0.00	0.00	0.00	0.00
Capital Expenditure	31.31	25.93	23.55	2.38	10.10
Fixed Investment	31.31	25.93	23.55	2.38	10.10
Net Lending	0.00	0.00	0.00	0.00	0.00
Overall Balance	-19.89	9.42	-6.43	24.86	-386.50
Primary Balance	-5.08	24.89	15.37	23.64	153.81

Source: Ministry of Finance

Table 4: NIA DISBURSED OUTSTANDING DEBT (end of period)

Title/Description	Dec-14	Dec-15 (Prelim)
Foreign Debt		
Port Development – 8/OCR	0.84	0.56
Port Development – 8/SFR	2.23	2.01
Port Development - Nevis OCR 08/SFR	0.06	0.04
Port Development – 35/SFR	2.09	1.80
Port Development Nevis – (Add) 35/SFRVDR	0.71	0.62
Port Development Nevis – 35 SFR SDK (Add)	0.30	0.28
Port Development Nevis – Add	0.30	0.22
Port Development Nevis - Add - 8\OR USD	0.56	0.45
Nevis Island Ports Project. KWD#471	1.66	1.61
Nevis Airport Project. (Eur. Inv. Bank)	0.50	0.00
Road Imp. & Mtce Project 12/SDF	7.56	7.09
Road Imp. & Mtce Project	3.50	2.94
Newcastle Airport Project KWD #576	6.26	6.07
Supplementary Port Project – KWD #590	0.92	0.89
RIMP (ADD) Nevis 12SFR	6.08	5.65
RIMP (ADD) Nevis 12OR	0.51	0.48
Mega International Commercial Bank	4.78	4.47
Nevis Water Enhancement Project 20/SFROR	14.71	16.72
Total Outstanding Foreign Debt	53.58	51.90
Domestic Debt		
Loan – SKNA National Bank	3.72	3.55
Loan – SKNA National Bank	1.98	1.79
Loan – SKNA National Bank	28.99	30.83
Loan - Bank Of Nevis_Tranche 2	3.34	2.80
Loan - Bank Of Nevis_Tranche 1	2.86	2.16
Overdraft - Bank Of Nevis	3.46	4.01
Treasury Bills Issue (OTC) 91 days	70.65	83.52
Treasury Bills Issue (OTC) 365 days	12.86	10.67
Overdraft a/c – SKNA National Bank	67.27	74.64
Overdraft a/c – Bank of Nevis		0.00
Overdraft a/c – FCIB	1.99	1.94
Director of Social Security_Cap. Project	11.99	11.99
Director of Social Security_Asp. Project	0.54	0.54
Surrey Paving Co	0.42	0.42
FINCO	0.60	0.45
TDC/FINCO	0.82	0.59
Restructured Loan - Bank of Nevis	48.25	47.41
Nevis Civil Servants Mortgage Loan	15.83	14.69
Total Outstanding – Domestic Debt	275.58	291.98
NIA Disbursed Outstanding Debt	329.16	343.88

Source: Ministry of Finance

Table 5: NEVIS AVERAGE EMPLOYMENT (JAN – DEC 2015)

	No. of Jobs	Weeks Worked	Total Wages
Agriculture, Hunting & Forestry	109	451	285,355
Fishing	2	7	2,132
Mining & Quarrying	16	61	39,407
Manufacturing	73	300	168,575
Electricity, Gas & Water Supply	88	378	295,288
Construction	664	2,686	1,979,157
Wholesale & Retail Trade	585	2,440	1,389,659
Hotels & Restaurants	1,210	5,078	3,898,780
Transport, Storage & Communications	396	1,674	1,067,050
Financial Intermediation	197	850	987,209
Real Estate, Renting & Business Activities	233	990	640,272
Public Administration & Defence	1,684	7,236	5,179,674
Education	102	442	617,745
Health & Social Work	26	108	44,042
Other Community, Social & Personal Services	116	486	261,323
Private Household with Employed Persons	150	632	207,651
Extra-Territorial Organization & Bodies	0	0	0
NEV AVERAGE	<u>5,651</u>	<u>23,819</u>	<u>17,063,319</u>

Source: St. Kitts-Nevis Social Security Board

Table 6: IMPORTS & PRODUCTION OF TARGET CROPS 2011-2015 (000 kgs)

CROP	Criteria	2011	2012	2013	2014	2015	Production as a % of imports 2015
Cabbage	Imports	54,621	107,079	115,063	135,886	43,200	1.16
	Produce	5,936	4,819	1,361	1,750	499	
Carrots	Imports	67,571	110,370	105,259	133,833	63,662	2.88
	Produce	5,374	2,857	20,729	10,400	1,833	
Cantaloupe/ Honeydew	Imports	21,247	37,113	20,519	114,580	84,240	67.44
	Produce	34,922	18,913	3,610	60,050	56,812	
Corn	Imports	8,211	19,730	21,364	31,364	14,764	48.67
	Produce	4,775	14,946	3,823	2,920	7,185	
Sweet Peppers	Imports	34,706	48,166	31,058	41,067	54,203	18.10
	Produce	22,588	16,945	8,537	27,020	9,810	
Pumpkin	Imports	4,427	3,266	2,459	0	0	100
	Produce	14,752	39,225	27,033	99,680	24,186	
Sweet Potato	Imports	0	0	0	0	2,345	514.12
	Produce	17,159	7,750	4,818	25,885	12,056	
Tomato	Imports	22,534	45,890	35,076	50,565	26,019	283.81
	Produce	71,055	43,455	46,406	142,830	73,845	
Watermelon	Imports	1,653	0	0	2,760	12,699	896.72
	Produce	103,334	69,348	70,239	234,830	113,874	
Onion	Imports	78,937	145,004	127,076	204,009	76,940	39.78
	Produce	2,072	19,277	12,133	52,258	30,608	

Source: Department of Agriculture

Table 7: OUTPUT FROM AGRO-PROCESSING UNIT (2011 – 2015)

Items	2011	2012	2013	2014	2015
Ice Lollies (bags)	1,894	261	286	566	67
Drinks (bottles)	1,667	557	704	4,813	2,911
Drink Powder	0	0	0	0	19
Jams/Jellies (jars)	1,182	118	124	1,062	398
Pulp (lbs)	0	2,113.34	2,885.35	3,515.98	1,230.28
Cassava Meal (lb)	0	35	35	309	14.44
Cassava Flour (lb)	0	22.5	27	50	21.5
Cassava Starch	0	0	0	9	0
Cassava Cake	0	1	1	0	0
Chunks	0	0	0	0	398.72
Concentrate	0	0	0	0	154
Mixed peel(lbs)	35	0	0	0	0
Mixed fruits(lbs)	0	37	0	0	0
Shelled Tamarind	0	0	00	5.65	0
Frozen Gooseberry	0	0	0	266.64	0
Chips(bags)	95	1,186	1,189	1,888	85
Guava cheese (pks)	133	49	50	49	0
Tea leaves(bags)	66	0	0	0	0
Water (Gallons)	2,879	3,355	3,193	1,522	2,345
Green Seasoning	0	21	23	0	0
Sugar Cake	0	3	8	0	0
Soaked Fruits	0	0	0	0	6.7
Sorrel (frozen)	0	25	25	0	0
Sweet Potato Mash	0	0	0	0	46.26
Guava preserves	0	3	3	0	0
Sweet potato Flour	0	2	1.5	0	0
Jujube	0	10	10	0	0
Noni Juice	0	0	5	0	2
Mauby	0	0	3	0	0
Syrup	0	0	3	0	0

Source: Department of Agriculture

Table 8: TOTAL OUTPUT (2011-2015)

CROPS	2011	2012	2013	2014	2015
Arugula	0	10	0	0	2
Apricot	0	0	175	0	0
Avocado	20	140	255	60	835
Basil	15	50	155	145	8
Bora Beans	5	25	140	485	217
Breadfruit	60	450	495	525	564
Broccoli	5	0	0	65	0
Butternut	1,510	1,945	5,495	9,140	4,117.5
Cabbage	4,700	5,280	2,275	400	1,303.5
Cantaloupe	2,110	2,670	8,680	4,350	1,440
Cauliflower	10	0	0	0	0
Carrots	1,065	260	425	725	0
Cassava	155	510	705	785	402
Cassava Meal	0	0	5	0	0
Celery	0	0	0	0	26
Christophene	30	0	355	525	628.5
Cocoa	0	0	0	0	0
Coconut	0	380	735	550	340
Cotton	0	0	0	0	0
Cucumber	6,525	9,080	12,700	17,040	14,201.5
Dasheen	0	0	55	185	287
Dragon Fruit	0	185	50	310	0
Eddoes	0	0	5	80	258
Eggplant	1,170	670	2,145	1,930	2,163
Fat Pork	0	0	0	0	3
Garlic	0	0	0	0	3
Ginger	85	115	125	215	150
Ginip	0	0	300	0	14
Grapefruit	0	80	1,890	505	140
Green Banana	1,505	1,740	2,545	3,510	3,898
Green Mango	0	0	0	0	12
Green Papaya	780	735	470	600	758
Guava	190	30	75	0	466
Guava Pulp	0	15	0	0	0
Golden Apple	10	0	55	0	172
Herbs and	810	780	475	225	52
Hot Peppers	20	15	195	25	5
Honey Dew	1,750	3,430	5,555	5,390	3,251
Jelly	0	30	350	130	269
Jujubi	0	10	0	0	4
Lemon Grass	0	40	45	10	0

CROPS	2011	2012	2013	2014	2015
Lettuce	10	0	770	515	641
Limes	620	240	520	285	80.5
Manciport	0	0	0	0	754
Mango	630	1,135	1,410	3,410	1425
Mango	0	0	0	70	0
Mint	0	5	5	0	8.5
Musk Melon	0	0	0	425	0
Okra	815	1,485	4,385	1,155	1,176.5
Onion	830	1,310	4,955	2,845	14,479
Oranges	0	35	40	50	44
Orange	0	0	0	0	28
Papaya Ripe	335	1,150	405	100	1,258.5
Passion Fruit	75	0	95	200	723
Plantain	1,480	2,675	2,585	2,200	2,064
Peanut	0	20	0	0	0
Pomerac	0	0	15	0	0
Pigeon Peas	0	0	190	0	0
Pineapple	1,740	2,085	4,020	2,415	2,756
Pumpkin	7,055	14,285	10,580	6,730	10,773
Purple	0	0	0	30	0
Purple Potato	0	0	0	0	38
Red Peppers	0	10	0	160	975
Rosemary	0	5	25	0	0
Ripe Banana	2,575	8965	8060	15,610	17,794
Ripe Plantain	710	1,710	3,270	4,445	6,671
Seasoning	325	145	1,315	525	877
Sea Grapes	0	0	55	0	0
Silk Banana	115	720	485	265	852
Sorrel	1,530	235	0	360	231
Sour Sop	5	30	80	50	1,120
Sugar Apple	30	0	45	130	0
String Beans	680	740	1,900	1,555	25
Star Apple	120	75	0	195	457
Sugar Cane	0	45	15	15	55
Sweet Corn	125	1,755	1,605	235	42
Sweet Pepper	5,890	3,280	5,160	2,265	1,356
Sweet Potato	11,290	11,950	16,640	10,590	11,952.5
Spinach	15	5	125	115	210
Tania	260	180	690	1,660	2247
Tamarind	0	0	0	40	0
Thyme	0	200	255	100	16
Tomatoes	14,955	19,465	21,715	22,115	29,574.5

CROPS	2011	2012	2013	2014	2015
Tomato	0	165	105	465	943
Tomato Plum	0	0	0	0	95
Tomato Roma	0	0	0	860	250
Watermelon	10,430	22,305	35,310	26,955	32,657.5
Wax Apple	70	10	10	35	115
White Potato	660	80	0	330	0
Yams	50	60	350	910	1,357.5
Yellow	0	0	0	60	1,021
Zucchini	110	140	655	70	60
Total	86,065	125,375	174,775	158,455	183,193

Source: Marketing Records

Source: Department of Agriculture