

Nevis Island Administration - Ministry of Finance

The Department of Statistics

2016 STATISTICAL

DIGEST



The Nevis Statistical Digest 2016 (2011– 2015)



Copyright©

The Department of Statistics

Government Road, Charlestown, Nevis

Email: statsnevis@niagov.com

Telephone: 1 (869) 469 5521 Ext 2168/2169

Fax: 1 (869) 469 0336

Disclaimer:

While all care has been taken to produce accurate figures based on available data, the Department of Statistics does not accept any liability for any omission from such forecasts nor any loss or damage arising from the use of, or reliance on the information contained within this publication.

MISSION STATEMENT

To prepare meaningful, timely, accurate and reliable data, for purpose of decision making and macro-economic policy formulation; in an effort to stimulate economic development efforts by attracting new industry and investment to Nevis.

VISION STATEMENT

*That the statistics we publish are of the highest quality possible,
That the general public will be confident that the information that they provide us with are secure,
That the importance of the department will be recognized.*

PREFACE

The purpose of this publication is to bring together in one volume some of the major important statistical series on Nevis Economic and Social trends. While it would be an exaggeration to suggest this publication is all inclusive, every effort has been made to include detailed descriptions of most of all the data presented.

This 2016th edition is another production of an annual flagship publication of the Department of Statistics. It offers historic and current information on topics of interest, and contains 84 tables organized in 12 chapters for the reviewed period 2011 – 2015. Improvements are continually made to enhance its value to users.

Users may download a soft copy of this publication via the Nevis Island Administration's website for free. For users with specific data requirements, the Department may be able to offer assistance.

While the information may be able to make informed decisions, the island's economy continues to improve, the current revenue stood at over ECD \$133 million by the end of 2015. This shows an increase of some four percent when compared to the actual current revenue of over ECD \$128 million by the end of 2014. The data also demonstrates a continual growth of the economy between 2012 and 2015. The actual figures produced show that in 2012, current revenue stood at ECD \$116.52 million; in 2013 at ECD \$121.10 million; in 2014 at ECD \$ 128.47 million and in 2015 at ECD \$133.86 million.

By the end of 2015, the island current expenditure stood at approximately ECD \$130 million, and which reflects a decrease of some 3 % when compare to the actual current expenditure of over ECD \$134 million by the end of 2014.

Except where other copyright is indicated, articles in this publication may be freely reproduced with acknowledgement for the Source. The Department welcomes your questions and or comments which can be sent to:

The Director:
Department of Statistics and Economic Planning
GMC Building, Government Road, Charlestown

TABLE OF CONTENTS

	Page
Preface	iii
From the Director's Desk	vi
Explanatory Notes	vii
Chapter 1	
GENERAL INFORMATION ABOUT NEVIS	10 - 22
<i>Notable Local & Historical Events</i>	
<i>Structure of Nevis Island Government</i>	
Chapter 2	
POPULATION AND VITAL STATISTICS	24 - 33
<i>Population Growth – Housing, Birth, Death & Infant Mortality</i>	
<i>Marriages and Divorces</i>	
Chapter 3	
INFRASTRUCTURE	35 - 39
<i>Building Permits Issued, Titles Issued and Deeds Registered</i>	
<i>Electricity Consumers and Production; Water Consumption</i>	
Chapter 4	
TRANSPORTATION	41 - 49
<i>Registration and Licensing of Vehicles</i>	
<i>Drivers Written & Road Test; Traffic Accidents Recorded</i>	
<i>Aircraft Movements; Cargo Movements; Passengers Movements</i>	
<i>Inter-Island Ferry Passengers Movements; Cargo Movements via Sea Ports</i>	
Chapter 5	
TOURISM	51 - 60
<i>Accommodation; Stayover Visitors</i>	
<i>Length of Stay; Arrivals from Traditional Territories</i>	
<i>Yacht and Cruise Calls/Passengers Arrivals</i>	
Chapter 6	
HEALTH AND SOCIAL	62 - 68
<i>Intentional and Unintentional Injuries</i>	
<i>Registered Diabetics & Hypertensive Patients at Health Centers</i>	
<i>Dental Unit Trend of Services Rendered</i>	
<i>Family Services</i>	
<i>Gender Affairs</i>	

Chapter 7

FINANCE	70 - 82
<i>NIA Revenue and Expenditure</i>	
<i>Inland Revenue Departments</i>	
<i>Customs Department</i>	
<i>SKB/NEV GDP by Economic Activity in Current & Constant Prices</i>	

Chapter 8

EDUCATION	84 - 88
<i>Number of Public & Private Schools</i>	
<i>Number of Students and Teachers (public & private)</i>	
<i>General Information on Pre-Schools and Nurseries</i>	
<i>Number of CXC Subjects Passes for Secondary Schools Students</i>	
<i>CAPE Grade Distribution at the Charlestown Secondary Sixth Form College</i>	
<i>Enrollment at the Charlestown Secondary Sixth Form College</i>	

Chapter 9

EMPLOYMENT	90 - 97
<i>Employees by Selected Industries and Services</i>	
<i>Work Permit Application by Sector</i>	
<i>Work Permit Application by Nationality, 2013 & 2014</i>	

Chapter 10

AGRICULTURE PRODUCTION AND TRADE	99 - 112
<i>Egg Production</i>	
<i>Throughput at the Marketing Division</i>	
<i>Production Analysis of Targeted Crops</i>	
<i>Animals Slaughtered</i>	
<i>Export of Sea Foods</i>	
<i>Estimated Landings of Species of Fishes</i>	
<i>Revenue collected on Imports</i>	

RAINFALL

Chapter 11

CRIME AND PROTECTION	114 - 121
<i>Crimes Reported</i>	
<i>Fire and Rescue Services</i>	

FROM THE DIRECTOR'S DESK

I am humbled and honoured to present the 2016 Statistical Digest, a yearly publication compiled by the Department of Statistics. We are indeed grateful for the contribution made by our stakeholders as statistics is the only science that enables different experts to analyze the same figures and draw conclusion from the outcome.

Year after year, our responsibility is to provide an adequate amount of historical data. Hence, this publication covers the period 2011 to 2015 which demonstrates the commitment and dedication to improve not only the quantity but the quality of the end product. Of course, we place prudent and strategic emphasis on this and to this end, a number of additional tables and or graphs have been added.

It was Aristotle who once said, *"It is the mark of an educated mind to be able to entertain a thought without accepting it"*, and so, we hope that this digest will serve as one of the ways to help keep you inform as well as to increase the collaborative effort of our stakeholders and or partners who provide the timely data.

On behalf of the Department of Statistics, special thanks is extended to our private and public partners who collected, collated, disseminated, analyzed and forwarded the data used to assist in this year's publication. We look forward to the continued harmonization between our department and the other departments of government and the private sector in the economy.

Donriell Trossa-Phillip

Director of Statistics

EXPLANATORY NOTES

I. The Digest:

The digest comprises of 11 sections, which can be considered as statistical indicators of the economy. These indicators are population, infrastructure, health, education, tourism, agriculture, finance and law and order and safety.

II. Reporting Period:

Most of these tables cover the period 2011 – 2015.

III. Data Source:

The data used in this publication was obtained mainly from administrative records of public and private sector agencies.

IV. Rounding:

In some instances, data is rounded up/down to one or two decimal places.

V. Symbols and Abbreviations

%	-	Percentage
mm	-	Millimeter
-	-	Nil or Negligible
in	-	Inches
km	-	Kilometer
/	-	(between two consecutive years) indicates a Financial Year or School Year
Con.	-	Container
Brk.	-	Break
TEU	-	Twenty Equivalent Units (containers are 20ft or 40ft)
GDP	-	Gross Domestic Product
GNI	-	Gross National Income
FOB	-	Freight on Board
NBCO	-	Nevis Business Company Ordinance

LLC	-	Limited Liability Company
Lbs	-	Pounds
Kg	-	Kilograms
Mw\h		Milliwatt per hour



Restoration work continues on the New River Estate, the last functioning sugar plantation on Nevis, dates back to the 1700's.

Chapter One

General Information

Nevis, a 36 square miles jewel lies near the top of the Lesser Antilles archipelago. Given the alias, ‘Queen of the Caribees’ in 1671, the island is accepted for its small, sombrero shape like statue. Its charm and tranquility will take you back in time when things were simpler, life more peaceful and stress was just a word. This gem intertwines as part of the Federation of St. Christopher and Nevis and has natural vegetation that is unparalleled.

Area:

Nevis is 36 square miles (93 square kilometers). The island is 7 miles (11.2 km) long by 6 miles (9.6 km) wide.

Location:

It is located about 200 miles south of Puerto Rico or approximately 17° North Latitude, and just west of Anguilla, approximately 62° West Longitude.

Geographical Division (Parishes)

The island of Nevis is geographically divided into five parishes: St. Paul’s, St. Thomas’, St. James, St. Georges, and St. Johns.

Highest Point:

Nevis is conical in shape with a volcanic peak known as Nevis Peak. It is the highest point on the island and stands at a height of 3,232 ft.

Capital:

The island’s capital is Charlestown.

Airport:

Nevis’ airport is named Vance W Amory International Airport (formerly Newcastle Airport). It is situated in the St. James Parish and a journey from it to Charlestown takes approximately 10 – 15 minutes.

Religion:

One of the most important elements of the people of Nevis, is their religious beliefs which are traditionally founded on Christianity. As a people, who are linked to their past, Nevisian embrace Christian beliefs as taught by several denominations in the society. Traditionally, there were Anglican, Roman Catholic, Methodist, Baptist and Wesleyan Holiness. In recent times, others have been added including: Church of God, Brethren, Evangelical, Pentecostal, Seventh Day Adventist and Jehovah's Witness. From about the mid 1990's, with the influx of immigrants from other Caribbean countries, we have witnessed the practice of religious beliefs in Hindu, Bahai and Muslim.

Banks:

The banking institutions on the island are: the RBTT Bank, the Bank of Nova Scotia, the Bank of Nevis, First Caribbean International Bank, The Development Bank of St. Kitts and Nevis and The St. Kitts Nevis & Anguilla National Bank. There are two credit unions, the Nevis Cooperative Credit Union and FND Enterprise Cooperative Credit Union Ltd. Of these banking institutions, two are locally owned; the Bank of Nevis which has an international banking section and the St. Kitts Nevis & Anguilla National Bank.

Currency:

The official currency is the Eastern Caribbean Dollar. Foreign currency is convertible at commercial banks at the prevailing rate of exchange.

Air Services:

The main aircraft carriers are: Seaborne, Winair, Cape Air and Tradewind Aviation. Caribbean Helicopters Limited, FEDEX and DHL cargo airlines provide daily courier services.

Sea Services:

Transportation by sea can be accessed via: motor vessels Caribe Queen, Caribe Breeze, Caribe Surf, Mark Twain, Sea Bridge, Sea Hustler and Lady B.

Hospital:

There is one major hospital on the island, the Alexandra Hospital, located on Government Road, Charlestown. However, there are Parish Health Centres, opened daily to serve the general public.

Police & Fire Services:

There are four (4) Police Stations and two (2) Fire Stations on the island. Of the two fire stations, the main one is adjacent to the Charlestown Police Station and the other is located at the Vance W. Amory International Airport in Newcastle. The other police stations are Cotton Ground, New Castle and Gingerland.

Notable Local Events

Tourism Week:

Mid-February

Nevis St. Kitts Swim:

1st Sunday in March

(Participants swim across 2.5 miles of sea water known as the Narrows between Nevis and St. Kitts)

Horse Racing:

Most Public Holidays

(The race track has no stopping gates and the track is not manicured, but there is no other race course in the world which has a backdrop of blue sea and a dormant volcano)

Drag Racing:

Most Public Holidays

(Drag racers from across the Leeward Islands participate in most of the meets. The drag race strip is located in the St. James' Parish.)

Inter-Primary Athletics Championship

Early April

(Students of primary age compete on a yearly basis for track supremacy)

St. Kitts and Nevis Sailing Regatta

Hanley's Road Fishing Tournament

May – June

Culturama

July – August

(Nevis' Premier Cultural Festival. It is celebrated annually over the last weekend of July – August.)

Nevis Marathon & Running Festival

September

(Held on a testing course that has an imaginative combination of challenging hills and flat terrains, providing an opportunity for speed.)

Oualie Beach Fishing Tournament:

October

(Approximately 30 boats with fishermen from across the Leeward Islands compete on an annual basis for the largest catch)

Nevis International Triathlon:

November

(Flagship Sporting Event which attracts persons from across the globe.)

Historical Events

- 1493: Sighted and named by Christopher Columbus on his second voyage.
- 1834: Emancipation. (Abolition Act 1833 end slavery in the British Empire on 1st August.
- 1861: First Nevis postage stamp issued.
- 1899: The hospital was destroyed in a hurricane. It was located on Old Hospital Road.
- 1906: The Queen's House, once residence of the Governor was transformed into the hospital and named Alexandra Hospital after Queen Alexandra.
- 1950: The First Secondary School, (Charlestown Secondary) was opened.
- 1956: The Federal Colony of the Leeward Islands was dissolved and St. Kitts, Nevis and Anguilla became a separate colony.
 - Newcastle Airport opened.
- 1958: The colony of St. Kitts, Nevis and Anguilla entered the West Indies Federation as a single unit.
- 1959: M.V. Christena began its ferry service between Nevis and St. Kitts. It was 160 ft. in length and owned and operated by the Government.
- 1961: Nevisians, led by Eugene Walwyn, sought secession from St. Kitts.
- 1967: St. Kitts and Nevis attained Associated Statehood with Britain.

The new Constitution changed the status of St. Kitts-Nevis-Anguilla from Colony to Associated Statehood; however, the rebellion of Anguilla kept her from being part of the new State.

 - The new Constitution provided for the Nevis Local Council.
- 1970: M. V. Christena sank off Nag's Head, St. Kitts while on its journey to Nevis. Approximately 240 passengers most of whom were Nevisians, perished.
 - A group of Nevisians formed the Nevis Reformation Party (NRP) with Simeon Daniel, a Lawyer by profession as the first President.
 - The Nevis Island Administration Building was constructed.
- 1974: The Nevis Dramatic and Cultural Society founded CULTURAMA, a festival dedicated to preserving the culture-music, dance, crafts and cuisine of Nevis.
- 1979: Introduction to Caribbean Examination Council (CXC) proficiency examinations for secondary students.
- 1980: The MV Caribe Queen went into service replacing the MV Liamuiga which was wrecked in St. Kitts by tropical storm David in August 1979.
 - February 19: Following the General Elections, the Nevis Reformation Party formed a coalition with the People's Action Movement. Simeon Daniel was given the portfolio as Minister of Finance.
- 1983: St. Kitts and Nevis attained political independence from Great Britain on September 19.

- Princess Margaret unveiled the dedication plaque as part of the Independence Celebration.
- Alexander Hamilton House was renovated to house the Nevis Island Assembly.
- Mr. Simeon Daniel became the first Premier in Nevis.
- Mr. Spencer Byron was named the first President of the Nevis Island Assembly following the attainment of Independence.
- The Nevis Island Administration built the Sixth Form College next to Charlestown Secondary (CSS).
- Mr. Herman Liburd became Speaker of the National Assembly.
- Mr. Weston Parris was appointed the first Deputy Governor General for Nevis.
- 1984: The Education Department changed the primary schools in Charlestown from segregated boys and girls schools to a co-educational platform.
- 1985: Queen Elizabeth II unveiled a plaque at the Power Station in Prospect.
 - SKANTEL replaced Cable and Wireless as the telecommunication provider.
- 1987: First post-independence (Local Island Assembly) elections held in December.
- 1988: The Nevis Water Department laid new lines in Nevis, the service was metered and from this time consumers began paying for water.
 - The Voice of Nevis (Radio VON) went on the air, becoming the first privately owned radio station in the Federation.
- 1989: In the Federal Elections voters returned the PAM/NRP coalition to office for a third straight term.
- 1990: First vote in Parliament for the Secession bid for Nevis. Needed 4/5 but other members of the NRP did not support Hon. Simeon Daniel.
- 1991: The first 5-Star Hotel – Four Seasons Resort was opened with John Stauss as General Manager and Isadore Sharpe as President of the Four Season brand.
- 1992: Local elections held on June 1. First change of Government in the Local Assembly. The Concerned Citizens Movement (CCM) led by Vance Amory won 3 of the 5 seats, replacing the Nevis Reformation Party (NRP) led Nevis Island Administration. Hon. Simeon Daniel was leader of the party.
 - June 5: Weston Parris, the Deputy Governor General died in office.
- 1994: His Royal Highness, the Duke of Edinburgh visited the island.
 - The first local born to be ordained Priest of the St. Paul's Anglican Church, Ernest Flemming.
- 1995: SKANTEL provided the first internet service on Nevis to Hanver Trust Company.
 - Hurricane Luis and Marilyn came back to back and caused severe damages.
 - His Honour, Eustace John was sworn in as the 2nd Deputy Governor General of Nevis.

- 1996: The Nevis Island Administration dedicated Phase One of the Waterfront renovation project on September 19th.
- 1997: In June the Nevis Island Assembly led by the Concerned Citizens Movement held the first reading of the Secession Ordinance, which called for a vote for separation from St. Kitts.
 - Following the local election, CCM returned to office and saw the first woman – Honourable Jean Nisbett-Harris elected to office.
 - September - Paul Lawrence opened Lyn Jeffers private secondary school.
 - Following the death of Mr. Spencer Byron, first President of the Nevis Island Assembly, the Hon. Marjorie Morton was appointed as President.
- 1998: The Nevis Island Government finished the first phase of the airport expansion.
 - Hurricane George caused several damages.
 - There was a Referendum on Secession for Nevis that resulted in the "yes" vote failed by a narrow margin of 4%. (62% as opposed to 66%)
 - The Nevis Island Administration dedicated the deep-water port at Long Point on September 20th.
 - The first female Magistrate for District "C", Her Worship, Yasmin Clarke was appointed.
- 1999: Hurricane Lenny came from the west side and caused severe damages.
- 2000: Honourable Patrice D H Nisbett replaced Joseph Parry as the elected representative in Constituency #11.
- 2001: The Nevis Island Administration undertook the first phase of the road improvement project (Newcastle to Cotton Ground).
 - The Nevis Island Administration opened the Charlestown Waterfront Phase Two Project and unveiled the Christiana Disaster Monument.
- 2002: The Nevis Island Administration undertook the second phase of the road improvement project (Cotton Ground to Market Shop).
 - On September 19th the Newcastle Airport was renamed Vance W. Amory International Airport.
- 2003: The Nevis Island Administration renovated and upgraded the Alexandra Hospital.
- 2004: The newly built Combermere Primary School was officially opened and renamed the Violet O Jeffers-Nicholls Primary School on September 2nd.
 - Charlestown Post Office was officially reopened after months of renovation.
- 2005: The Prospect Primary School was renamed the Ivor Walters Primary School on 22nd September.
 - October, saw the appointment of the First Resident Judge for Nevis, Her Ladyship, Justice Ianthea Leigertwood-Octave.
- 2006: Opening of the Flamboyant Nursing Home.

- The Nevis Reformation Party was elected to government after 14 years in opposition.
- 2007: The Hon. Malcolm Guishard, Leader of the Opposition in the Federal Parliament died.
 - Honourable Mark Brantley was elected in a bi-election replacing Malcolm Guishard. He became Leader of Her Majesty Loyal Opposition in the National Assembly.
 - Charlestown Secondary School new wing was commissioned.
 - Official launch of the Sea Bridge ferry services at Cades Bay.
 - Official launch of the Golden Grove Housing Community in Brown Hill.
- 2008 Drilling for Geothermal energy commenced on Nevis
 - St. John's Primary School was commissioned
 - Official opening of Drag Race Strip in St. James Parish
 - Hurricane Omar caused severe damages and the closure of Four Season Hotel.
- 2009: St. Thomas Preschool in Jessups Village, was renamed the Inez France Preschool.
 - Nevis Netball Complex renamed after local netball pioneers Cicely Grell-Hull and Dora Stevens.
 - Official launch of the Harbour View Housing Development, in Ramsbury Site.
 - Preschoolers celebrate 25 years of Early Childhood Programme.
- 2010: Hon. Patrice Nisbett appointed as Attorney General in the Federal Government.
 - St. John's Primary School was renamed the Elizabeth Pemberton Primary School.
 - Grove Park was renamed Elquemedo T. Willett Park.
 - Maddens Wind Farm in St. James Parish officially opened.
 - Implementation of Value Added Tax (VAT) in the Federation of St. Kitts and Nevis.
- 2011: Housing Project in Cherry Garden officially opened on 14th January.
 - Nevis Reformation Party (NRP) was elected for a second term on 11th July.
 - Placement of a Memorial Monument was unveiled at Bath Cemetery in remembrance of M V Christina Disaster on 5th August.
 - On November 22nd Cape Air Airline offers service to Nevis.
 - Runarko Shakur Morton, former Leeward Islands Cricketer died as a result of a motor vehicle accident in Trinidad on March 4th.
- 2012: The Nevis Performance Arts Center (NEPAC) officially opened on April 28th.
 - Honourable Simeon Daniel, Nevis' First Premier died on May 27th.
 - A landmark Election Petition Case was held at the Charlestown High Court, January 16 – 24th.
 - The first elected seat, Nevis 2, to be legally declared "Null and Void".
 - Official opening of the Brown Hill Pharmacy in the Brown Hill Health Center.
 - The Court of Appeal up held its decision regarding the petition case.

- In November, the NRP Administration dissolved parliament without setting an election date.
- 2013: January 22, Nevis Local Election. Concerned Citizens Movement won 3 of 5 seats.
 - Tradewind Aviation started operation from San Juan, Puerto Rico to Nevis on November 2nd.
 - November 27th, Belle Vue International School was renamed Nevis Academy under new management.
- 2014: January 15th, Seaborne Airlines began its airlift service between Nevis and Puerto Rico.
 - Samuel Hunkins Drive Waterfront was resurfaced on April 4th.
 - Special Education Unit in Nevis was renamed Cecele Thompson-Browne Integrated School on 29th April.
- 2015: February 3rd, Official opening and renaming of two major roads in Charlestown:-
The Hamilton Road which leads from Pump Road into Hamilton to the Carl Tucket Boulevard; and Pump Road which leads from the roundabout adjacent to the Bath Cemetery into the by-pass road to the Stuart Williams Drive.
 - February 20th, Caribbean Helicopters Limited started its operations from Nevis via Antigua.
 - February 22nd, Hon. Vance Amory, Premier of Nevis was sworn in as Senior Minister of Nevis Affairs, Minister of Labour, Social Security and Ecclesiastics Affairs in the National Assembly.
Mark A G Brantley Minister of Foreign Affairs and Aviation in the National Assembly.
 - April 7th, the removal of Value Added Tax (VAT) from all food items, medical supplies and funeral expenses.

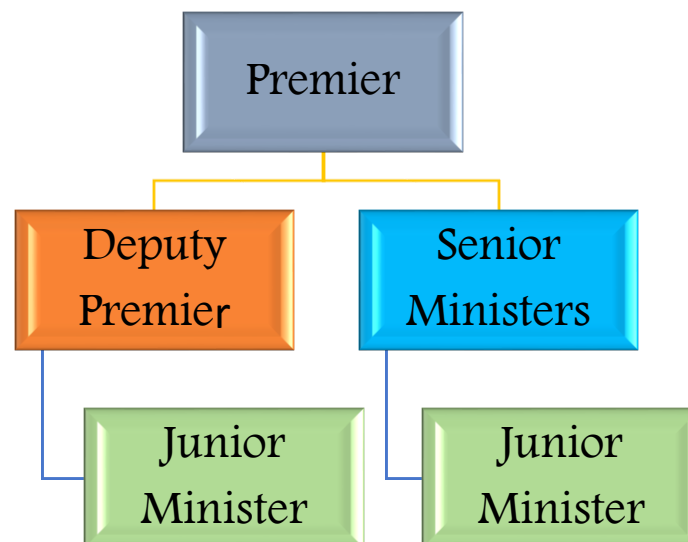
Structure of the Nevis Island Administration

Modeled off the West-Minister System with a Constitution as the Supreme Law, the Federation of St. Christopher and Nevis has a democratically elected government with a unicameral structure of parliament. The uniqueness of the 1983 Constitution Order of St. Christopher and Nevis, gives credence for autonomy for the island of Nevis.

With five (5) single-member constituencies and a majority rule voting system for a period of five years term of assembly, the constitution allows for a composition of the Nevis Island Assembly. As such, there are eight (8) parliamentary members who are elected and or nominated to serve.

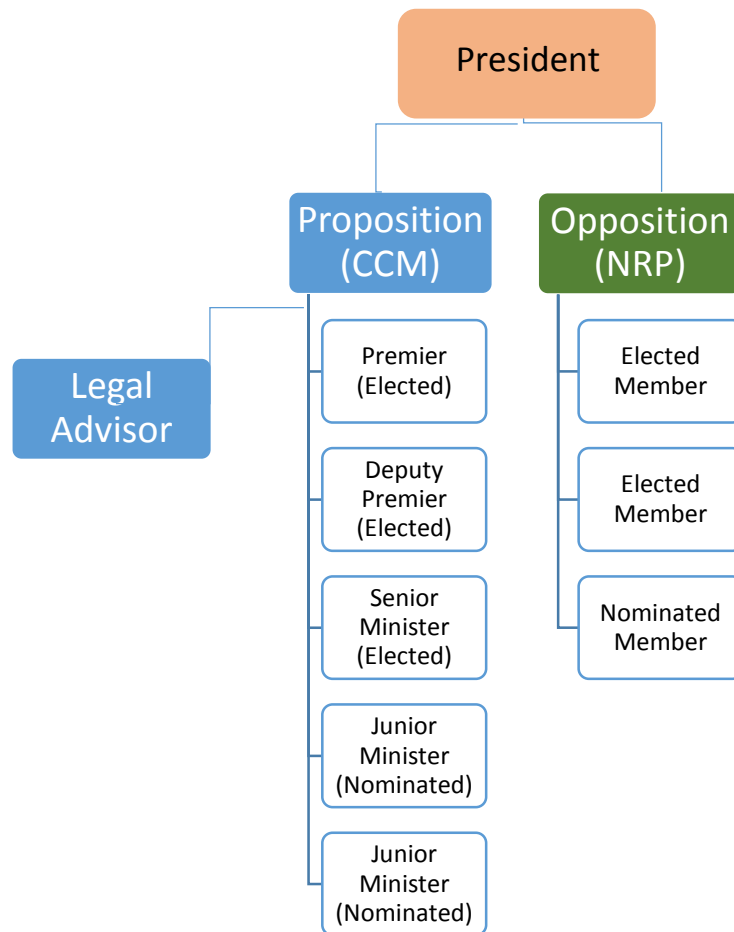
As a constitutional monarchy within the Commonwealth of Nations, the Federation recognizes Queen Elizabeth II (British Monarch) or her successor as the titular head of government. The Monarch is represented on the island of Nevis by a Deputy Governor General appointed by the Governor General (titular head) of the Federation who is constitutionally responsible for the government of both islands.

Since the realization of Independence in 1983, the island of Nevis is governed by an administrative division known as the Nevis Island Administration.



Organization chart displaying the composition of the Nevis Island Administration

Chart displaying the composition of the Nevis Island Assembly as at December 31, 2015



The Nevis Island Assembly has the authority to pass and or amend certain ordinances. When in session, the assembly is controlled by the President, who is presently, His Hon Mr. Farrell Smithen. He once held the position of Clerk of the Assembly from 1997 to 2003.

The Deputy Governor General is responsible for delivering the throne speech at the first sitting of the assembly following an election process. Presently, His Honour, Mr. Eustace John holds the position of Deputy Governor General, and has continued to do so since his appointment in January 1995. The tables below show the five constituencies that are represented by five elected members at the end of 2015.

Table I.1: Members of the Nevis Island Administration and their portfolios as at December 31, 2015

Name of Minister	Area Representing	Portfolios
Vance W. Amory	Elected representative for St. George Constituency, (Nevis 5)	Premier Minister of Finance, Statistics & Economic Planning, Education & Library Services, Trade, Industry & Consumer Affairs, Labour and Human Resources
Mark A G Brantley	Elected representative for St. John Constituency, (Nevis 2)	Deputy Premier Minister of Tourism, Health, Social Development, Youth & Sports, Culture, Gender Affairs, Community Development, Telecommunications & Information and Basic Needs Trust Fund.
Alexis Jeffers	Elected representative for St. James Constituency, (Nevis 4)	Senior Minister of Communications, Works, Public Utilities, Post, Physical Planning, Natural Resources & Environment, Agriculture, Land, Housing, Cooperatives and Fisheries.
U. Troy Liburd	Nominated member of Government	Junior Minister in the Ministry of Communications, Works, Public Utilities, Natural Resources and Physical Planning with special responsibilities for Physical Planning, Public Utilities, Flood Water Control, Public Works, Environment and Post.
Hazel Brandy-Williams	Nominated member of Government	Junior Minister in the Ministry of Social Development, Sports, Youth, Community Development, and Gender Affairs with special responsibilities for Community Development, Gender Affairs, Youth & Sports, Social Development, the Licensing Unit and Import & Export Control and Basic Needs Trust Fund.

Table I.2: Members of the Opposition Party as at December 31, 2015

Name	Area Representing	Position
Joseph W Parry	Elected representative for St. Thomas Constituency, (Nevis 3)	Leader of the Opposition
E Robelto Hector	Elected representative for St. Paul Constituency, (Nevis 1)	Member of Parliament
Carlisle Powell	Nominated Member of Parliament	Member of Parliament

Since obtaining independence as a Federation, the island of Nevis has participated in 15 elections by the end of December 2015. These elections comprised of 8 General Elections and 7 Local Elections. The two political parties which contested the elections are the Concerned Citizen Movements (CCM) and the Nevis Reformation Party (NRP). (See the chart following).

General Election	Year	Party	Seats Won	Local Election	Year	Party	Seats Won
	1984	-	-		1987	CCM	1
		NRP	3			NRP	2
	1989	CCM	1		1992	CCM	3
		NRP	2			NRP	2
	1993	CCM	2		1997	CCM	3
		NRP	1			NRP	2
	1995	CCM	2		2001	CCM	4
		NRP	1			NRP	1
	2000	CCM	2		2006	CCM	2
		NRP	1			NRP	3
	2004	CCM	2		2011	CCM	2
		NRP	1			NRP	3
	2010	CCM	2		2013	CCM	3
		NRP	1			NRP	2
	2015	CCM	2				
		NRP	1				



Nevis – an elegant and romantic venue for a wedding ceremony. You can choose from picturesque churches, historic plantations, soft, sandy beaches or beautiful tropical gardens.

The Four Seasons Resort is no exception to the wedding locations.

Chapter Two

Population & Vital Statistics

Population statistics is the use of statistics to analyze characteristics or changes to a population. Population statistics can analyze anything from global demographic changes to local small scale changes. An analysis of the last population statistics conducted on the island, showed that there was an increase in the population.

The table below represents the population growth for the last five censuses conducted during the period 1970 to 2011. Between 1980 and 1991, the population decreased significantly, a period when some residents of Nevis migrated to different countries. However, in 2001 there was an increase of 2,314 or 27% when compared to 1991. 12,277 is the preliminary for the island of Nevis which indicates that the population has grown by some 1,169 when compared to 2001.

Table II.1: Nevis Inter-Censal Population Growth, 1970 - 2011

Census Year	Population	Population Growth	Intercensal change (%)	Annual Average rate of change (%)
1970	11,140	-1630	-12.76	-1.28
1980	9,428	-1712	-15.37	-1.54
1991	8,794	-634	-6.72	-0.67
2001	11,108	2314	26.31	2.63
2011P	12,277	1,169	10.52	1.05

Source: Department of Statistics and Economic Planning, Nevis & Statistics Division, St. Kitts

The parish of St. John has grown tremendously over the last two censuses. This parish accounts for approximately 32% of the island's population as recorded by the last census. In the table below (11.2), the other four parishes also showed significant increases over the years.

Table II.2: Nevis' population by parish for the last five censuses, 1970 – 2011

Year	St. Paul	St. John	St. George	St. Thomas	St. James	Total
1970	1,469	2,622	2,778	2,149	2,122	11,140
1980	1,243	2,224	2,295	1,975	1,691	9,428
1991	1,411	2,191	2,086	1,613	1,493	8,794
2001	1,790	2,901	2,564	2,047	1,806	11,108
2011P	1,847	3,827	2,496	2,069	2,038	12,277

Source: Department of Statistics and Economic Planning, Nevis & Statistics Division, St. Kitts

The population of St. John increased from 2,901 persons in 2001 to 3,827 in 2011, reflecting an increase of 926 persons. The parish of St. James also recorded an upsurge in population, expanding by some 12.9% or an additional 232 persons moving from a total of 1,806 persons in

2001 to 2,038 persons in 2011. While the population declined in St. Georges by 2.7%, increases were observed in St. Paul by 3.2% and in St. Thomas by 1.1%. Overall, a 10.5% growth was recorded for the population on Nevis.

TABLE II.3: Population by Parish and Sex, 2001 and 2011

Parish	2001			2011			Difference 2011/2001
	Male	Female	Both Sexes	Male	Female	Both Sexes	
St. Paul	883	907	1,790	906	941	1,847	57
St. John	1,414	1,487	2,901	1,854	1,973	3,827	926
St. George	1,248	1,316	2,564	1,242	1,254	2,496	-68
St. Thomas	997	1,050	2,047	1,083	986	2,069	22
St. James	881	925	1,806	1,041	997	2,038	232
Total	5,423	5,685	11,108	6,126	6,151	12,277P	1,169

Source: Department of Statistics and Economic Planning, Nevis & Statistics Division, St. Kitts

Table II.3 shows a comparison between the population growth in 2001 and 2011. The graph below compares the sex structure of the population of Nevis for censuses 2001 and 2011. The information reveals that there was an increase in both sexes for all parishes with the exception of St. George, which showed an overall decrease of sixty-eight (68), six (6) males and sixty-two (62) females. The male population showed an increase of 703 while females were 466 over the two census period.

Graph II.1: Comparison between males and females per parish in 2001 and 2011

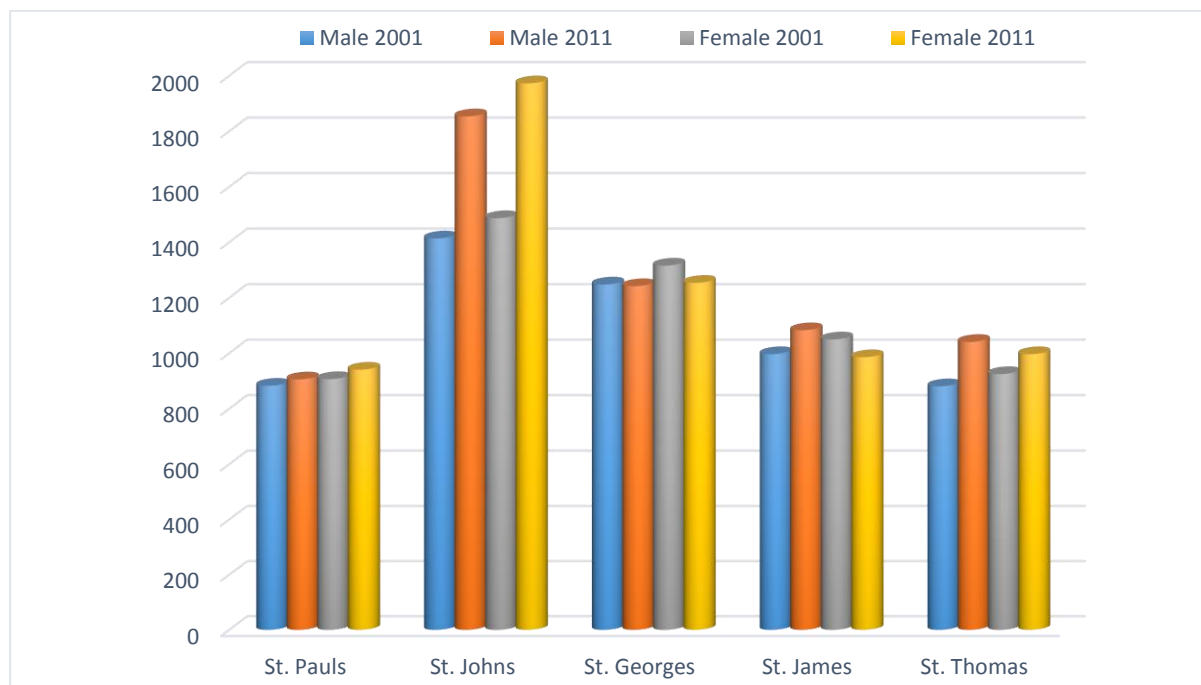


Table II.4: Population by Age Group and Parish Nevis (Census 2001)

Age Group	PARISHES					Total
	St Paul	St John	St George	St Thomas	St James	
Both Sexes	1,790	2,901	2,564	2,047	1,806	11,108
0-4	172	237	234	199	122	964
5-9	148	268	242	190	176	1,024
10-14	146	293	241	197	138	1,015
15-19	144	229	200	150	135	858
20-24	151	220	171	129	114	785
25-29	165	216	193	172	132	878
30-34	164	244	226	186	149	969
35-39	113	256	224	181	155	929
40-44	142	235	183	157	161	878
45-49	115	155	145	117	111	643
50-54	85	114	85	64	68	416
55-59	57	89	72	50	73	341
60-64	46	70	78	63	54	311
65-69	44	86	62	63	42	297
70-74	32	69	79	49	59	288
75-79	22	56	47	36	49	210
80-84	21	43	51	26	30	171
85+	23	21	31	18	38	131

Source: Department of Statistics and Economic Planning, Nevis & Statistics Division, St. Kitts

Table II.4a: Population by Age Group and Parish Nevis (Census 2011)

Age Group (Both Sexes)	St Paul	St John	St George	St Thomas	St James	Total
0-4	104	245	110	83	88	630
5-9	134	298	172	140	120	864
10-14	170	354	210	176	138	1,048
15-19	150	306	230	180	158	1,024
20-24	136	288	198	131	172	925
25-29	141	248	179	146	131	845
30-34	150	270	181	129	150	880
35-39	163	308	176	194	137	978
40-44	125	272	194	174	159	924
45-49	106	307	203	177	141	934
50-54	155	299	194	225	150	1,023
55-59	97	195	141	84	160	677
60-64	52	84	56	67	43	302
65-69	60	96	61	34	94	345
70-74	27	69	51	35	64	246
75-79	32	77	56	43	38	246
80-84	17	43	37	15	30	142
85+	28	68	47	36	65	244
Total	1,847	3,827	2,496	2,069	2,038	12,277

Source: Department of Statistics and Economic Planning, Nevis & Statistics Division, St. Kitts

Following the National Census conducted in 2011, the population by age group has shown a significant increase when compared to 2001. The above table, (11.4a) demonstrates the number of persons living within the various age groups in the five parishes of Nevis.

Analysis shows that the age groups 10-14, 15-19 and 50-54 recorded the highest number of the overall population with, 1,048, 1024 and 1023 respectively. Of the three highest populated age groups St. Johns Parish recorded outstanding figures. For age group 10-14 St. Johns recorded the highest of 354 while St. James recorded the lowest of 138.

For ages 15-19 St. Johns recorded 306 while St. Paul was the lowest with 150, and age 50-54 showed St. Johns at 299 and St. James at 150. The table above thus depicts that between the ages of 0-49 the population is at its highest with 9,052 or 73.74 % persons alive; while the lowest figure recorded of persons alive was between the age groups of 50-85+ with 3,225 or 26.27%.

Of that figure, the age group 85+ top the number with some 244 persons alive. This number reflects the longevity of the island's residents. The parish of St. Paul recorded 28; St. Johns 68; St. George 47; St. Thomas 36 and St. James 65; of such 69 falls within age 89. The table below displays that within that time frame, there were 163 females as opposed to 81 males living over the age of 85+, a ratio of 50:1. St. John parish recorded 48 females alive during the time the census was conducted.

Table II.5: Population by Age Group 85+ and parish, Nevis (Census 2011)

PARISH	85	86	87	88	89	90	91	92	93	94	95	96	97	98	99	103	104	85+
ST. Paul	0	6	3	0	10	0	3	2	0	0	2	1	1	0	0	0	0	28
ST. John	8	15	3	3	16	4	3	2	2	10	0	0	1	0	0	1	0	68
ST. George	5	7	4	1	14	2	2	1	1	4	3	0	1	0	1	0	1	47
ST. Thomas	8	3	0	3	14	1	0	1	0	6	0	0	0	0	0	0	0	36
ST. James	2	5	4	5	15	0	18	3	2	6	1	0	2	1	1	0	0	65
TOTAL	23	36	14	12	69	7	26	9	5	26	6	1	5	1	2	1	1	244

Ethnic Groups, Nevis (Census 2011)

	Frequency	Percent
Valid African/Negro/Black	10,556	86.0
Chinese	35	.3
East Indian	721	5.9
Hispanic	196	1.6
Indigenous people	2	.0
Mixed	370	3.0
Portuguese	4	.0
Syrian/Lebanese	8	.1
White/Caucasian	341	2.8
Other	44	.4
Total	12,277	100.0

Age 85+	Male	Female	Total
St. Pauls	5	23	28
St. John	20	48	68
St. George	13	34	47
St. Thomas	17	19	36
St. James	26	39	65
Total	81	163	244

Ethnic groups or ethnicity is a category of people who identify with each other based on common ancestral, social, cultural or national experience. According to the data, there were 721 or 5.9% of East Indian residents living on

the island, while at the same time 341 or 2.8% were White/Caucasian. The data will also show that in comparison of locals (African/Negro/Black), to East Indians, the ratio is 68:1.

Vital Statistics

Vital Statistics is probably the major source of information about the health of a population. Therefore, the data collected from ongoing recording and or registration of all “vital events”, included but not limited to birth, death, marriages, fetal deaths, and divorces. This ongoing process is the only source that provides individuals with a legal status and or legal document and fundamental rights such as identity, inheritance, education, health and other social services.

Birth, Death and Infant Mortality



While the Population and Housing Census conducted every ten years will reveal changes in the distribution of a country’s age groups, thus the result will have long lasting economic and social impact as the size of the population determines the demand for goods and services.

The table below shows that by the end of 2015, 105 births were recorded by the Registry of Births and Deaths. 61 were females and 44 were males, indicating a slim increase of 1.9% when compared to 2014. Additionally, the data revealed that of the 558 live birth for the past 5 years, 280 were females and 278 males, a narrow difference of 2 for gender comparison.

Table II.5: Nevis Births and Deaths, 2011 – 2015

Year	Live Births			Deaths		
	Female	Male	Total	Female	Male	Total
2011	48	65	113	37	58	95
2012	63	63	126	44	39	83
2013	64	47	111	44	48	92
2014	44	59	103	43	52	95
2015	61	44	105	49	59	108

Source: Ministry of Health, Nevis

Meanwhile, the table above also revealed that by the end of 2015, a total of 108 persons died; showing a 13.7% increase when compared to 2014. Of the 108, 49 were females and 59 were males, a gender difference of 10.



For the reporting period, the Registry had recorded a total of 473 deaths, 217 were females and 256 were males, a gender difference of 39.

Between 2011 and 2015, Crude Birth Rate fluctuated between 8.7 and 11.0. 2012 accounted for 11.0; 2011 was 9.9 and 2013 9.7. Meanwhile, Crude Death Rate increased over the period displayed in Table 11.6 by 4.8% where it moved from 8.3 in 2011 to 8.7 in 2015.

Table II.6: Nevis Crude Birth and Death Rates, 2011 – 2015

Year	Crude Birth Rate	Crude Death Rate
2011	9.9	8.3
2012	11.0	7.4
2013	9.7	8.1
2014	9.0	8.1
2015	8.7	8.7

Table II.7: Nevis Infant Mortality Rate, 2011 - 2015

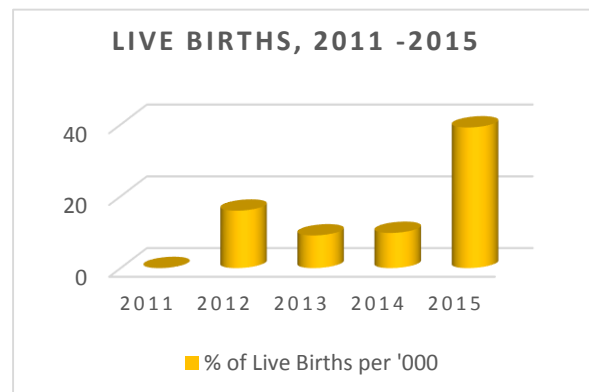
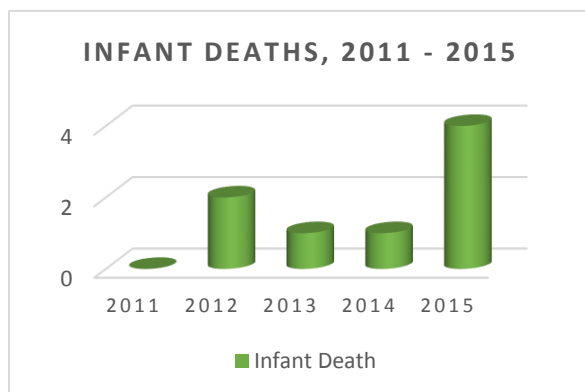
Year	2011	2012	2013	2014	2015
Infant Deaths	0	2	1	1	4
% per 1000 Live Births	0	16.0	9.1	9.8	39.2

Source: Ministry of Health, Nevis



Infant Mortality

Infant mortality can be refer to deaths of young children, less than one year of age. It is measured by the infant mortality rate (IMR), which is the number of deaths of children under one year of age per 1000 live births. By the end of 2015, the number of infant deaths increased by four. When compared to the past three years, the rate increased to 39.2% per 1000 live births.

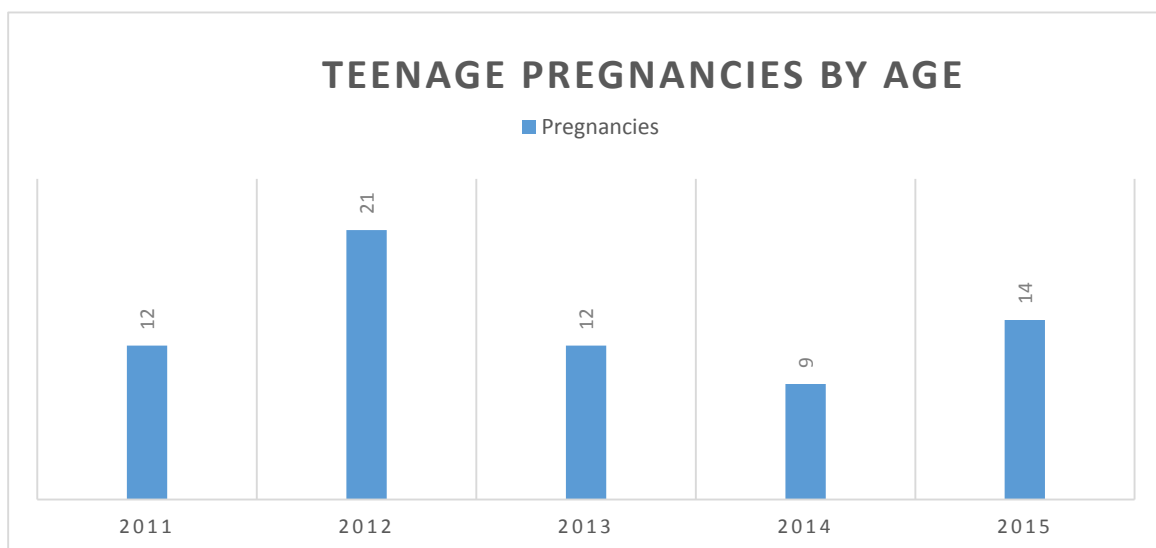


Teenage Pregnancy

For this purpose, the teenage age-range is 13-19. From the 2011 census, there were 2,072 persons living within the age range of 10-19. In 2015, there were 14 babies born. The teenage birth figure indicates an increase of 56% when compared to 2014. The teen birth rate has fluctuated over the period under review, with the highest recorded figure of 21 in 2012.

Table II.8: Teenage Pregnancies by age in Nevis, 2011 – 2015

AGE	YEAR				
	2011	2012	2013	2014	2015
13	0	0	0	0	0
14	0	0	0	0	1
15	0	3	0	0	0
16	0	1	2	0	1
17	4	3	0	2	3
18	3	6	6	3	3
19	5	8	4	4	6
Total	12	21	12	9	14



Marriages and Divorces

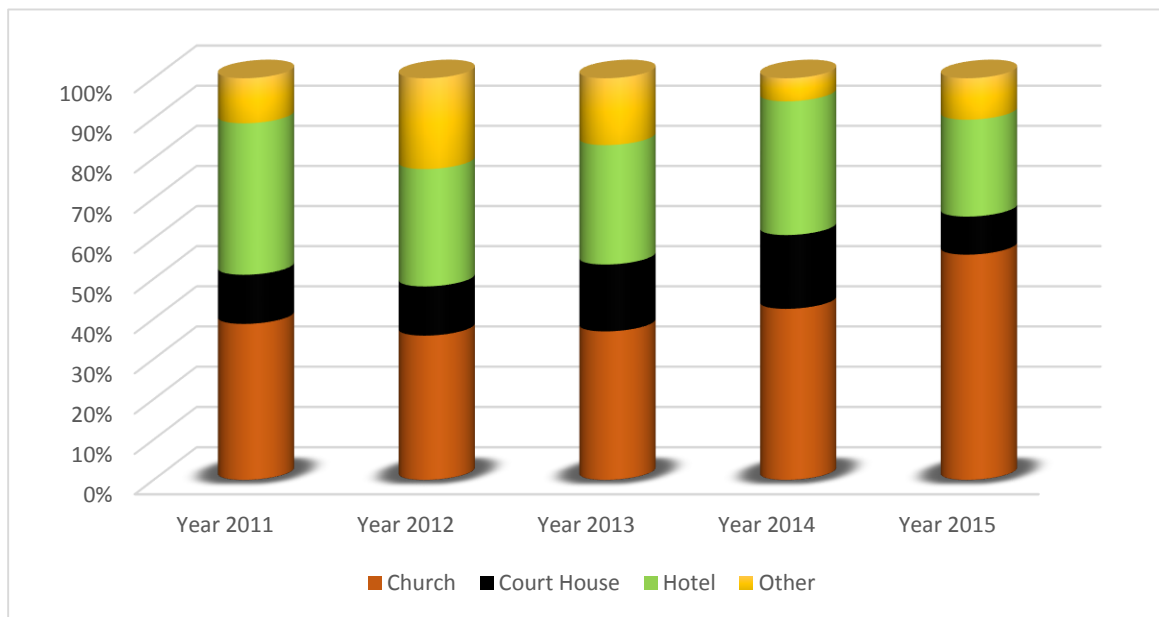
Marital status can be used as an indicator which is included in the demographics of vital statistics. The data revealed that between 2011 and 2015, 491 marriages were recorded that took place at different locations on the island. Of that total, 209 took place in a church, 66 took place in the Court House, 150 took place at a hotel and 66 took place at other locations. By the end of 2015, there was an increase in the number of marriages by some 33.33% or a difference of 29, when compared to 2014.

Table II.9: Location where Marriages took place in Nevis, 2011 – 2015

Year	Church	Court House	Hotel	Other	TOTAL
2011	38	12	37	11	98
2012	38	13	31	24	106
2013	31	14	25	14	84
2014	37	16	29	5	87
2015	65	11	28	12	116
TOTAL	209	66	150	66	491

Source: Ministry of Health, Nevis

Graph II.4: Comparison of places where marriages took place 2011 - 2015





Divorce (or dissolution of marriage) is the termination of a marriage or marital union that is legally recognized. This indicator forms part of the vital statistics data gathered to determine the country's health and or wealth.

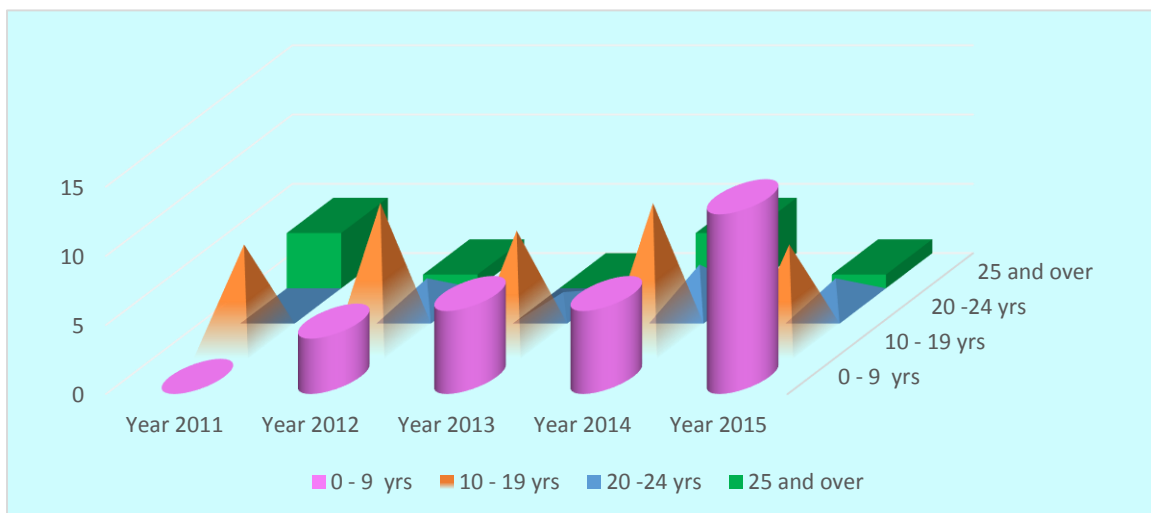
Table 11.10 below shows that of the 91 divorces which took place over a five year period 27 divorces were legally granted to persons who were married for the duration of 10 to 14 years. Although the total of divorces granted for 2015 remained at 23 when compared to 2014, there was an increase for the duration period of 5-9 in 2015 by some 5 divorces or 100%. By the end of 2015, divorces granted recorded a decline by some 75% for marriages within the duration of 25+ years, when compared to 2014.

Table II.10: Number of Absolute Decree granted in Nevis, 2011– 2015

Year	Duration of Marriages per year						Total
	0-4	5-9	10-14	15-19	20-24	25+	
2011	0	0	3	4	0	4	11
2012	2	2	5	5	2	1	17
2013	2	4	8	2	1	0	17
2014	1	5	7	3	3	4	23
2015	3	10	4	3	2	1	23
Total	8	21	27	17	8	10	91

Source: Registry Office, High Court, Nevis

Graph II.5: Duration of Marriage per year between 2011 and 2015





Recently enhanced area at a key intersection in Pinney. Right is the island main road which leads to Charlestown while on the left is a road which runs into New Cut Road onto Craddock Road.

Chapter Three

Infrastructure

Housing

Historically, the best leading indicator for the economy has been housing. While data was being collected during the last census, a household was observed as a living arrangement of people, individually or in groups, who provided for themselves, the basic necessities of living.

The table below displays a total of 3,832 household enumerated at the end of 2001 census when compared to the 2011 census which enumerated 4,635 households. This indicates a 21% increase over a ten-year period. The table also demonstrates that the average household size in 2001 was 3.0 in comparison to 2.7 in 2011. The parish of St. James accounted for the largest reduction in household size from 2.7 to 2.4. In 2011, preliminaries show an increase of 395 household when compared to 2001 in St. John Parish, and an increase also in St. James Parish in 2011 of 213 household.

Table III.1: Number of Households in Nevis, 1970 – 2011

Area	Household per decade from 1970 - 2011				
	1970	1980	1991	2001	2011P
St. Paul	387	368	460	592	658
St. John	591	593	663	974	1,369
St. George	658	600	601	856	893
St. Thomas	509	527	485	742	834
St. James	484	455	477	668	881
Total	2,629	2,543	2,686	3,832	4,635

Source: Department of Statistics & Economic Planning, Nevis & Statistics Division, St. Kitts

Building Permits

Building permits are required for new buildings, renovations and additions to existing buildings. These permits are issued on an annual basis once inspection is done by the Physical Planning Unit.

Between 2011 and 2015, the number of residential permits issued fluctuated over the years. By the end of 2015, the amount issued decreased by 2 and increased by 43 when compared to the figures for 2014. The information presented also revealed that the number of commercial permits issued for construction fluctuated over the years. The overall total number of permits issued for the five year review period was 1,058 permits.

Table III.2: Number of Building Permits Issued in Nevis, 2011- 2015

Year	New Erections	Additional & Renovations	Removals	*Change of Use	Fencing	Pool	Other
2011	136	44	6	1	23	1	6
2012	158	54	9	0	14	1	5
2013	120	30	3	0	18	5	7
2014	140	43	5	0	16	3	4
2015	126	39	7	0	20	2	2
TOTAL	680	210	30	1	91	12	24

* Change of use – usage of structure was changed from one purpose to another Source: Physical Planning

Table III.3: Number of Building Permits Issued by development type in Nevis, 2011- 2015

SECTORS	2011	2012	2013	2014	2015
Residential	169	206	122	167	165
Residential Villa	0	2	7	7	1
Residential/ Apartment	4	5	7	5	2
Commercial	29	19	26	22	11
Commercial/Residential	0	0	0	0	2
Industrial	2	0	0	2	0
Institutional	7	7	3	11	11
Hotel/Tourism	1	0	6	4	0
Other	5	2	12	3	4
TOTAL	217	241	183	221	196

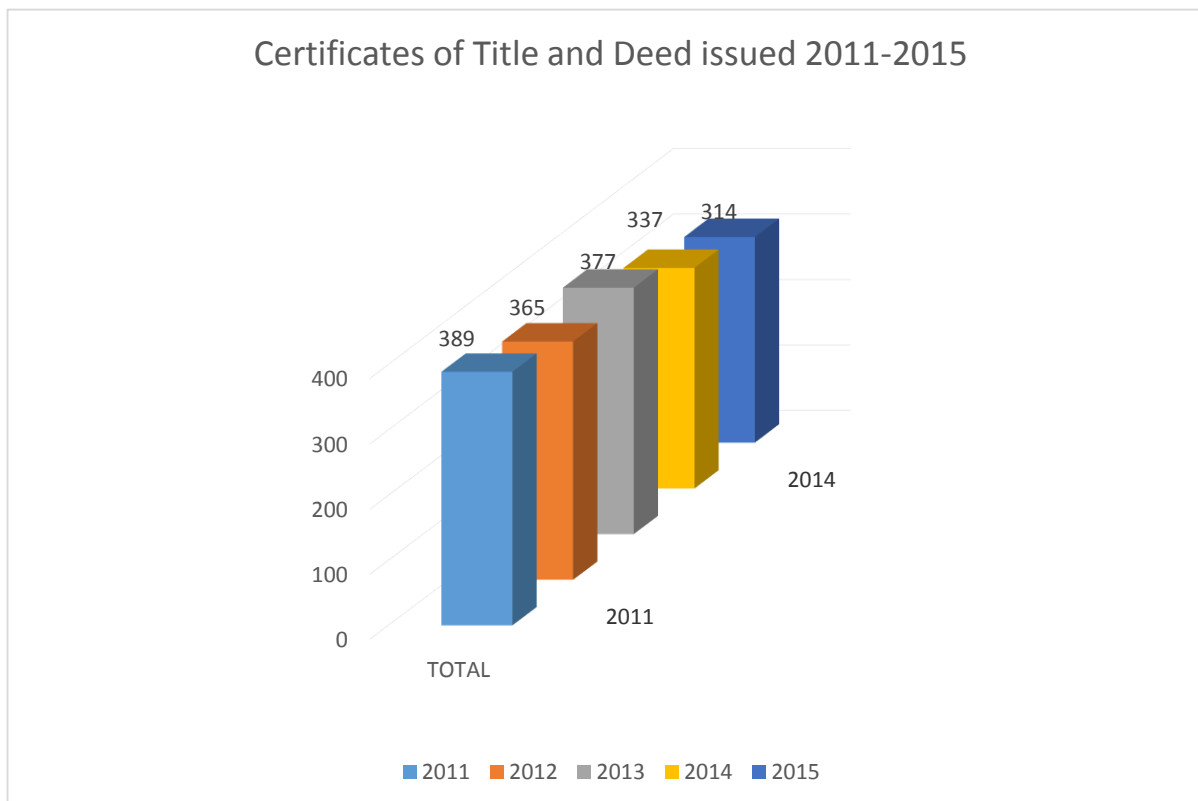
Deeds & Titles

At the end of 2015, the table showed a total of 314 deeds were registered at the Supreme Court Registry in Charlestown. This figure showed a decline of 23 registered deeds or 6.8% as compared to 2014. Comparing the five year review period it can be seen that the totals fluctuated and 2013 recorded the largest increase of registered deeds.

Table III.4: Type of Deeds registered at the Registry of Titles, Charlestown Supreme Court

Type of Deed	2011	2012	2013	2014	2015
Conveyance	44	53	54	51	45
Gifts	14	8	8	12	5
Vesting	18	8	8	5	14
Assent	17	10	10	19	26
Reconveyance	16	17	19	12	10
Mortgage	37	43	45	20	14
Debentures	1	1	1	0	0
Others	242	225	232	218	200
TOTAL	389	365	377	337	314

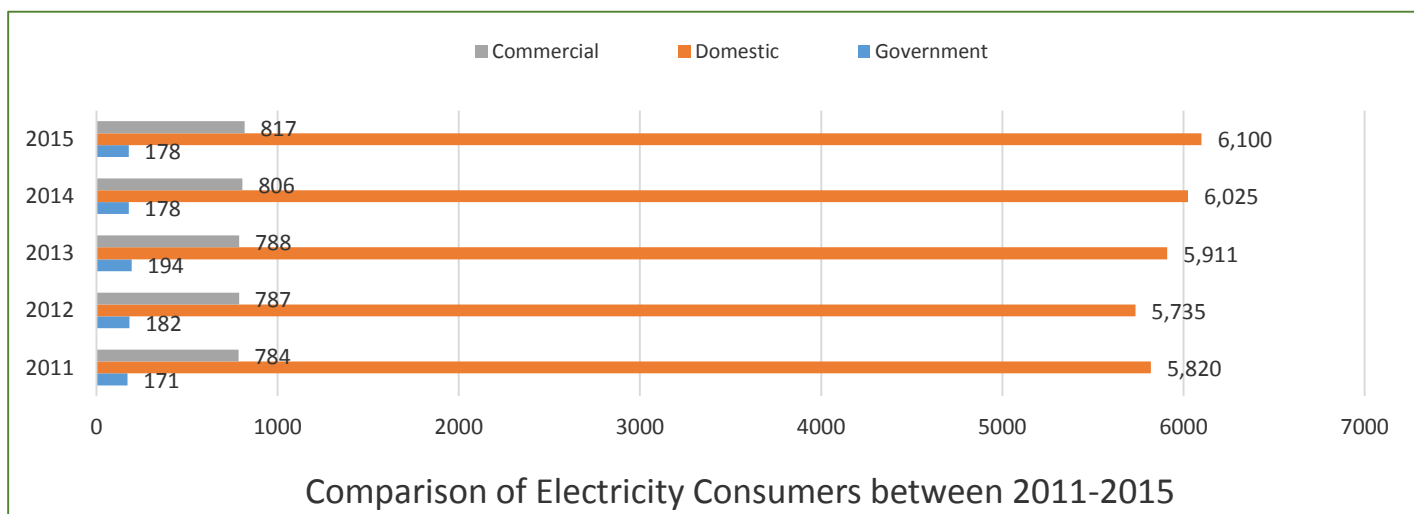
Graph III.1: Certificates of Title issued at the Supreme Court Registry in Nevis, 2011-2015



Electricity Consumers & Electricity Production

The number of persons in a household would have a great impact on the consumption of electricity on a regular basis. The data collected from the Nevis Electricity Company shows the consumption of electricity for Government, Domestic and Commercial. Domestic users showed a steady increase for the period 2012-2015, while the commercial users increased their usage over the same reporting period.

CONSUMER	2011	2012	2013	2014	2015
Government	171	182	194	178	178
Domestic	5,820	5,735	5,911	6,025	6,100
Commercial	784	787	788	806	817
TOTAL	6,775	6,704	6,893	7,009	7,095
Total Electricity Generated/Gross Generation (mw/h)	52,976,300.00	53,540,470.00	52,465,950.00	52,327,588.00	55,112,474.00
Maximum Demand	8.85	8.61	9.73	8.63	8.70
Load Factor	70	70	86	66	60



Water Consumption

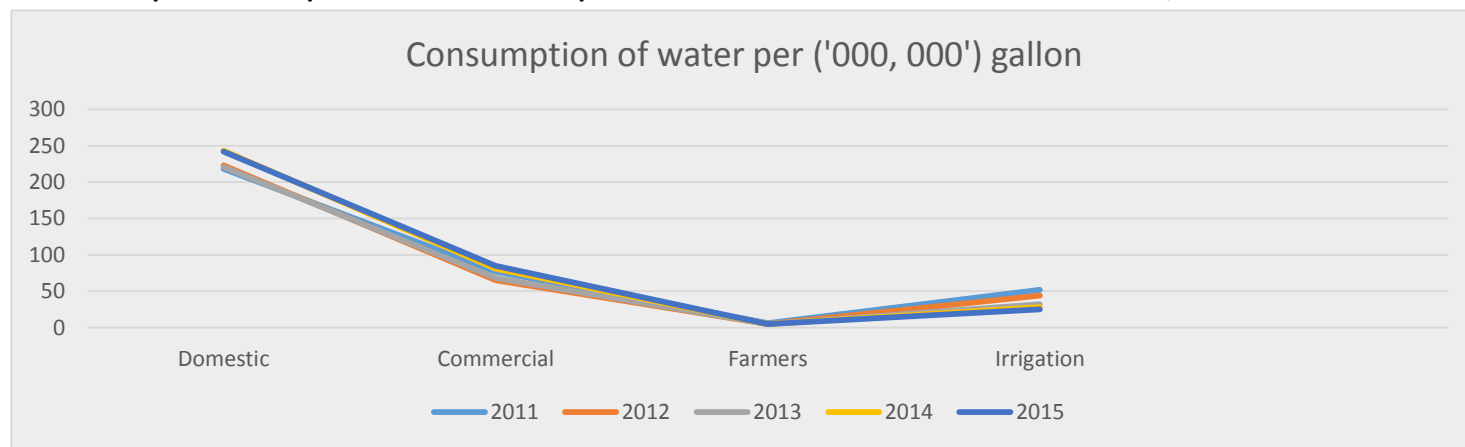
A country that is growing with more people and more activities will demand more water. See the table below indicates that the amount of water consumption for domestic users varied from year to year with a slight decreased in 2015 when compared to 2014. By the end of 2015, the overall total of water consumption was 404,710,258 gallons.

Commercial Consumers use of water increased at the end of 2015 by some 4,250,211 gallons, or some 5% when compared to 2014. This indicates that water is also a necessity in the commercial industry, to include schools, hospitals, restaurants and the manufacturing of products.

Table III.6: Water Consumption (per gallon) by Consumers, 2011 - 2015

CONSUMER	2011	2012	2013	2014	2015
DOMESTIC	218,303,210	223,485,503	221,366,630	243,561,420	242,293,498
COMMERCIAL	77,738,950	65,057,025	68,502,480	81,684,089	85,934,300
FARMERS	6,392,130	5,424,890	5,025,990	5,480,570	5,018,680
IRRIGATION	52,194,500	44,189,895	32,711,100	28,966,300	25,423,900
GOVERNMENT	15,300,000	13,000,000	14,400,000	9,030,496	46,039,880
TOTAL	369,928,790	351,157,313	342,006,200	368,722,875	404,710,258

Graph III.3: Comparison of the consumption of water between the different consumers, 2011-2015





Nevis Island Administration purchases a new 30-seater Toyota Coaster bus, to be added to the aging fleet of school buses at the Department of Education.

Chapter Four

Transportation

With a combined total of 3,008 registered vehicles over the period under review, a total of 836 vehicles were registered, at the end of the fiscal year 2015. However, while the figures display a constant increase in registration, the number of private cars and motorcycles registration at the end of 2015 increased by 125 when compared to 2014.

Source: Traffic Department of the Royal St Christopher & Nevis Police Force, Division "C".

Category	Type of Vehicle	2011	2012	2013	2014	2015	Total
Private Cars and Motorcycles	Private Cars	140	156	168	198	277	939
	Private Jeeps	182	164	231	232	280	1,089
	Motorcycles	2	15	13	13	10	53
	Motor Scooters	8	11	8	4	11	42
	Gulf Car	4	5	1	6	0	16
	TOTAL	336	351	421	453	578	2,139
Public Service Vehicles (all types)	Motor Omnibuses (passenger bus)	10	11	11	11	49	92
	Taxi Cars	0	2	2	4	0	8
	Taxi Jeeps	5	3	2	3	0	13
	Taxi Buses	3	3	8	4	15	33
	Rental Cars	14	4	3	2	5	28
	Rental Pickups	0	0	0	0	0	0
	Rental Jeeps	15	16	34	20	35	120
	Rental Buses	0	1	3	0	6	10
	Rental Motorcycles	1	0	0	0	9	10
	TOTAL	48	40	63	44	119	314
Commercial Vehicles (all types)	Lorries	19	12	17	38	38	124
	Vans	28	23	18	27	32	128
	Other/Jeeps	1	0	6	5	1	13
	Pickups	49	38	55	54	65	261
	Tractors	2	2	1	0	1	6
	Loaders	2	0	0	1	0	3
	Forklifts	0	0	0	2	0	2
	Backhoes	1	0	6	6	2	15
	Cranes	0	0	3	0	0	3
	TOTAL	102	75	106	133	139	555
	Overall Total	486	466	590	630	836	3,008

Table IV.2: Number of vehicles licensed in Nevis, 2011 – 2015

Category	Type of Vehicle	2011	2012	2013	2014	2015
Private Cars and Motorcycles	Private Cars	1,334	1,317	1,336	1,331	1,509
	Private Jeeps	1,805	1,845	1,896	1,857	1,979
	Motorcycles	20	21	22	28	28
	Motor Scooters	8	16	14	13	32
	Gulf Car	17	18	8	13	1
	TOTAL	3,184	3,217	3,276	3,242	3,549
Public Service Vehicles (all types)	Motor Omnibuses	69	69	71	63	187
	Taxi Cars	22	16	23	22	2
	Taxi Jeeps	10	18	15	13	25
	Taxi Buses	45	40	47	50	73
	Rental Cars	45	42	41	44	38
	Rental Pickups	4	8	4	4	0
	Rental Jeeps	165	160	186	187	179
	Rental Buses	8	10	11	8	16
	Rental Motorcycles	4	3	3	2	13
	TOTAL	372	366	401	393	533
Commercial Vehicles (all types)	Lorries	196	203	188	175	222
	Vans	154	157	134	170	160
	Other/Jeeps	79	63	90	76	0
	Pickups	607	566	551	576	590
	Tractors	3	1	1	1	0
	Loaders	6	4	3	1	1
	Forklifts	6	4	4	3	2
	Backhoes	26	19	22	17	17
	Cranes	5	5	2	7	6
	TOTAL	1,082	1,022	995	1,026	998
	OVERALL TOTAL	4,638	4,605	4,672	4,661	5,080

Source: Department of the Royal St. Christopher & Source: Traffic Nevis Police Force, "C" Division

Drivers Written/Road Test

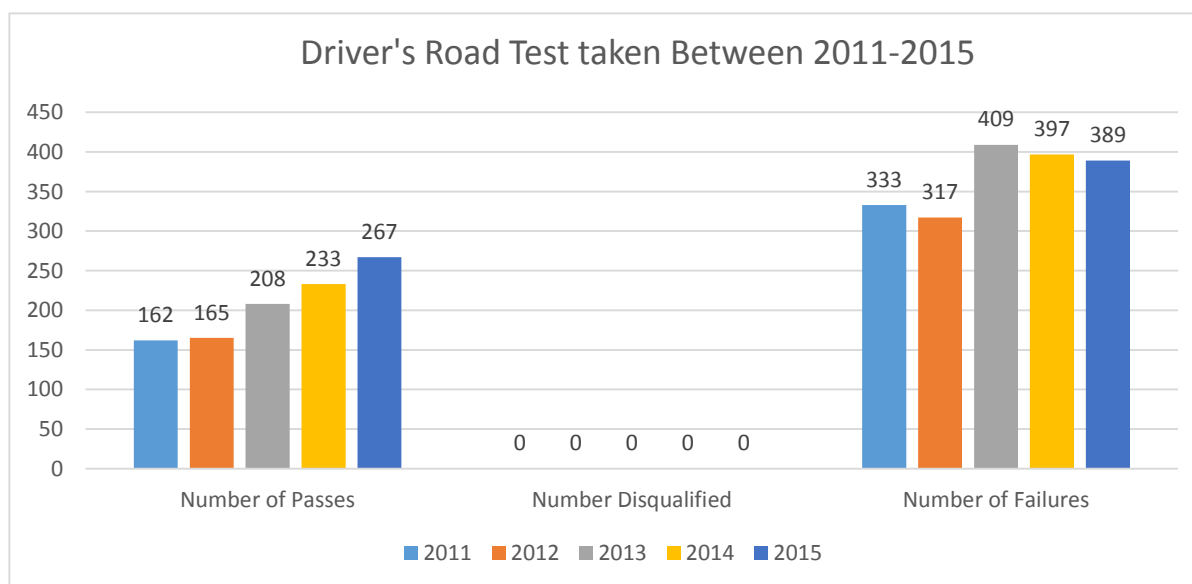
The Drivers Written Test is administered by the Traffic department to individuals who are learning to drive. This test must be passed before doing the road test with a Police Officer from the traffic department. During 2011-2015, there were a total of 2,880 tests taken, where 1,035 were passed and 1,845 were failures. There were no disqualifications recorded for the stated period.

Table IV.3: Results of written test taken at the Traffic Department, 2011 - 2015

Year	Number of Passes	Number Disqualified	Number of Failures	Total
2011	162	0	333	495
2012	165	0	317	482
2013	208	0	409	617
2014	233	0	397	630
2015	267	0	389	656
TOTAL	1,035	0	1,845	2,880

Driver's Road Test

The illustrated graph below shows a total of the road test that were taken for the review period 2011-2015. It demonstrates fluctuations over the reporting period.

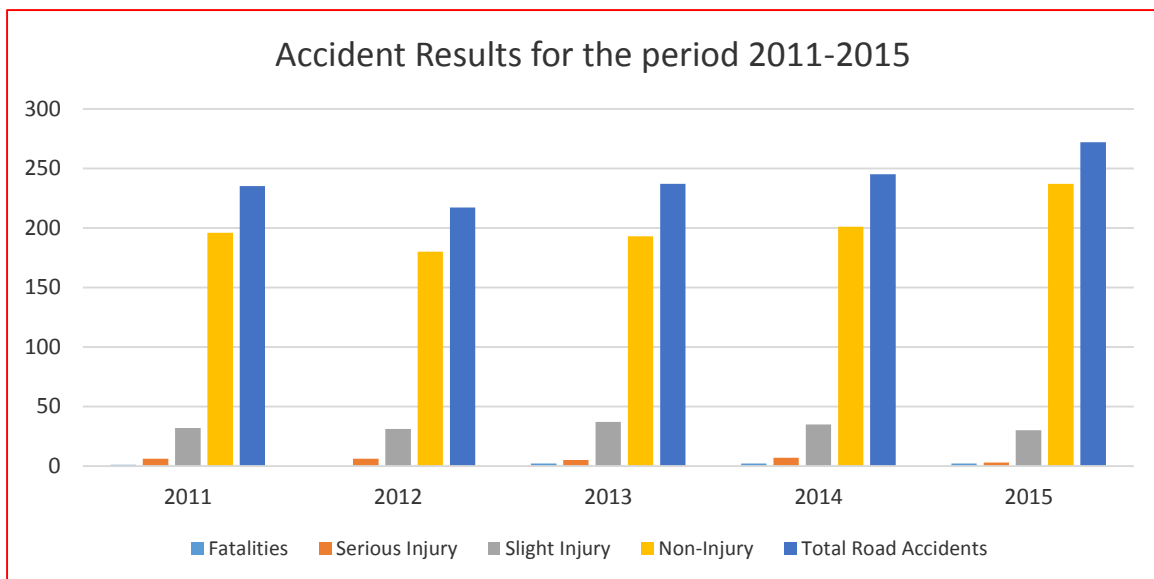


Traffic Accidents Recorded

Over the five year period, a total of 1,206 road accidents were recorded. At the end of 2015, 237 non-injury accidents were recorded as opposed to 201 at the end of 2014. The data also revealed that number of accidents recorded for the last three years and involved fatalities, remained constant as opposed to results of serious injuries varied over the said time period.

Table IV.4: Results of Accident Recorded at the Traffic Department, 2011 – 2015

Results of Accident	2011	2012	2013	2014	2015	Total
Fatalities	1	0	2	2	2	7
Serious Injury	6	6	5	7	3	27
Slight Injury	32	31	37	35	30	165
Non-Injury	196	180	193	201	237	1,007
Total Road Accidents	235	217	237	245	272	1,206



Source: Traffic Department of the Royal St. Christopher & Nevis Police Force, Division "C"

Air Transportation

Air lifts or transport is one of the most important factors in any country as this is also a means of bringing tourists to our country on a daily basis.

For the review period there were a total of 15,918 Arrivals and 15,903 Departures. In 2015, the half year ending in December showed that the figure remained constant for both arrivals and departures and also was the largest number recorded from 2011-2014.

Table IV.5: Aircraft movements via Vance W Amory International Airport, 2011– 2015

Year	Per ½ Year	Arrival	Departure	Total
2011	June	1,515	1,516	3,031
	December	1,301	1,298	2,599
	Total	2,816	2,814	5,630
2012	June	1,663	1,662	3,325
	December	1,405	1,402	2,807
	Total	3,068	3,064	6,132
2013	June	1,626	1,629	3,255
	December	1,431	1,424	2,855
	Total	3,057	3,053	6,110
2014	June	1,821	1,819	3,640
	December	1,509	1,507	3,016
	Total	3,330	3,326	6,656
2015	June	2,090	2,090	4,180
	December	1,557	1,556	3,113
	Total	3,647	3,646	7,293
OVERALL TOTAL		15,918	15,903	31,821

Source: Nevis Air & Sea Ports Authority



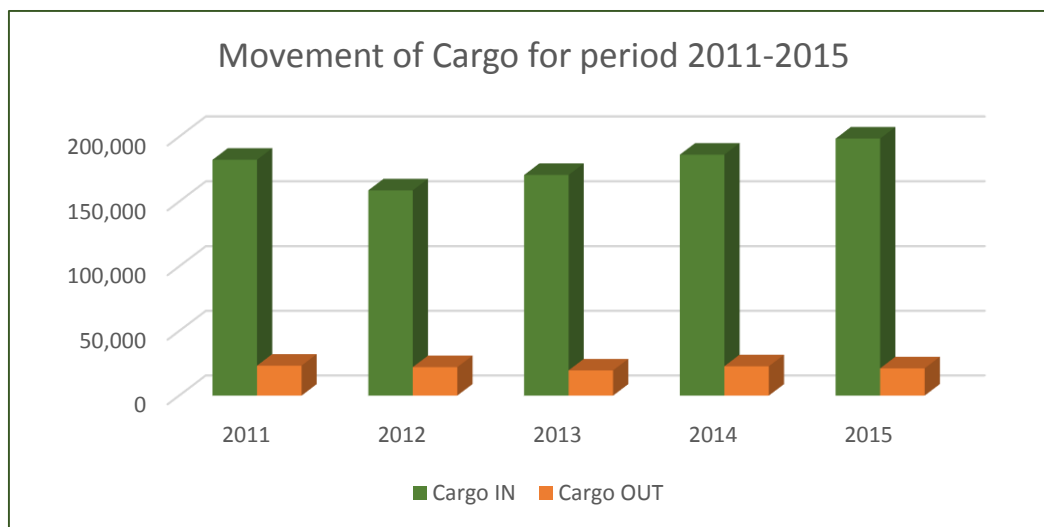
FedEx and DHL are the only two cargo planes that continue to operate at the Vance Amory International airport on a daily basis. The following table shows that the cargo coming in is larger than cargo going out, the largest of which was the fiscal year (2015). See table below:

Table IV.6: Cargo movements via Vance W Amory International Airport, 2011 - 2015

Year	2011	2012	2013	2014	2015
Cargo IN	182,222	158,680	170,505	186,124	198,583
Cargo OUT	23,194	22,059	19,493	22,719	21,111
Total Cargo (Lbs)	205,416	180,739	189,998	208,843	219,694

Source: Nevis Air & Sea Ports Authority

Graph IV.3: Movements of Cargo (lbs) via Vance W Amory International Airport, 2011-2015



Source: Nevis Air & Sea Ports Authority

Passenger Movements

Vance W Amory International Airport ushered in the New Year (2015), with the arrival of the Seaborne Airlines offering its services from Nevis to Puerto Rico on a weekly basis. The service commenced on January 15, 2015, an additional airlift for customers. The table below displays a grand total of 46,626 passengers arriving over a five year period as opposed to 52,028 passengers departing over the said period. By the end of 2015, inbound passengers totaled 10,036 while the outgoing passengers total some 10,236.

Table IV.7 demonstrates figures per half year for the period under review. Throughout the review period, movement of passengers fluctuated as there was a decrease in passenger movements at the end of 2015 by some 1,018 or some 5% when compared to 2014.

Table IV.7: Passengers movements via Vance W Amory International Airport, 2011 – 2015

Year	Per ½ Year	Arrival	Departure	Total
2011	June	1,212	6,114	7,326
	December	5,170	4,772	9,942
	Total	6,382	10,886	17,268
2012	June	5,217	5,522	10,739
	December	4,648	4,525	9,173
	Total	9,865	10,047	19,912
2013	June	5,296	5,517	10,813
	December	4,559	4,536	9,095
	Total	9,855	10,053	19,908
2014	June	5,323	5,786	11,109
	December	5,165	5,016	10,181
	Total	10,488	10,802	21,290
2015	June	5,211	5,648	10,859
	December	4,825	4,588	9,413
	Total	10,036	10,236	20,272
OVERALL TOTAL		46,626	52,024	98,650

Source: Nevis Air & Sea Ports Authority

Sea Transportation

Travelling by boat is the only means of transportation to get to and from St Kitts. There are a variety of five local passenger ferries which operates between each island, with a patch work of schedule to meet individuals' need.

Table IV.8: Inter-Island Ferry Passengers movements between Charlestown and Basseterre, 2011 – 2015

Year	Per ¼ Year	Arrivals	Departures	Total
2011	March	29,661	27,863	57,524
	June	26,928	26,245	53,173
	September	31,731	31,057	62,788
	December	29,943	29,346	59,289
	Total	118,263	114,511	232,774
2012	March	29,684	26,416	56,100
	June	28,452	27,039	55,491
	September	32,332	30,565	62,897
	December	27,604	26,121	53,725
	Total	118,072	110,141	228,213
2013	March	31,989	30,025	62,014
	June	30,052	29,077	59,129
	September	29,850	29,003	58,853
	December	33,112	30,912	64,024
	Total	125,003	119,017	244,020
2014	March	27,579	26,499	54,078
	June	29,378	29,907	59,285
	September	33,176	33,491	66,667
	December	30,187	30,151	60,338
	Total	120,320	120,048	240,368
2015	March	36,607	35,145	71,752
	June	30,606	29,951	60,557
	September	34,837	34,579	69,416
	December	33,441	32,206	65,647
	Total	135,491	131,881	267,372
OVERALL TOTAL		617,149	595,598	1,212,747

Source: Nevis Air and Sea Ports Authority

Table IV.9: Cargo Movement (per tonnage) via the Sea Ports, 2011 – 2015

YEAR	MONTH	OIL Tonnage	Sand, stone, etc Tonnage	Vehicle Tonnage	Vegetable Tonnage	Con. Tonnage	Brk Bulk Tonnage
2011	March	3,338	9,412	301	667	9,342	485
	June	4,780	17,785	453	719	7,585	375
	September	2,734	4,293	217	377	6,519	370
	December	4,100	3,031	262	426	8,755	425
	TOTAL	14,952	34,521	1,233	2,189	32,201	1,655
2012	March	2,564	7,738	203	314	7,132	1,447
	June	3,286	7,957	204	240	6,828	477
	September	6,237	2,263	183	796	6,062	226
	December	2,512	8,548	198	109	10,432	393
	TOTAL	14,599	26,506	788	1,459	30,454	2,543
2013	March	475	4,635	315	855	8,754	330
	June	3,918	5,834	168	561	8,340	293
	September	3,007	2,997	189	442	8,720	288
	December	6,735	3,309	356	686	9,693	348
	TOTAL	14,135	16,775	1,028	2,544	35,507	1,259
2014	March	3,391	6,087	193	1,042	9,156	243
	June	5,331	4,179	728	1,197	9,605	258
	September	3,613	7,966	460	595	8,402	354
	December	5,931	7,739	456	1,281	10,296	384
	TOTAL	18,266	25,971	1,837	4,115	37,459	1,239
2015	March	4,235	8,826	766	974	9,041	243
	June	3,484	9,260	422	855	8,443	193
	September	5,389	8,794	1,313	1,297	9,611	302
	December	6,707	3,193	1,135	1,198	10,996	425
	TOTAL	19,815	30,073	3,636	4,324	38,091	1,163

Source: Nevis Air and Sea Ports Authority



The existing covered hot pool at the Bath Stream. One of Nevis' tourist attractions located on the grounds of the historic Bath Hotel.

Chapter Five

Tourism

Accommodation

The data provided in this publication for the period under review as it relates to this chapter, plays an important role not only in the economic and employment policies, but in social and environmental implications.

With the most up-to-date statistics for monitoring inbound trends into Nevis, the data would show that tourists from the customary markets continue to grace our shores, via the Vance W Amory International Airport and the Charlestown Harbour.

There's the assurance that all of the accommodations offer peaceful and tranquil privacy, and the facts provided include the number of establishments, the number of bedrooms and the number of beds. Hence, offering the choices between staying on a historic plantation, a guest house, a condo or in a luxury hotel.

The table below displays the five years period that is under review. The number of hotels on the island of Nevis remained at eight for its 36 square miles of unspoiled natural beauty. A total number of 386 hotel rooms and 530 beds have remained constant for 2014 and 2015.

Table V.1: Number of Hotels, Rooms and Beds in Nevis 2011- 2015

Year	No. of Hotels	No. of Rooms	No. of Beds
2011	8	368	507
2012	8	386	530
2013	8	386	533
2014	8	386	530
2015	8	386	530

Visitors Arrivals

Over the past five years (2011-2015) the number of visitor arrival to the shores of Nevis has varied. In 2011, a total of 7,702 tourists visited the island compared to 6,848 in 2015. The difference in the total is 854 or 11.09% reduction in tourist arrivals. The information provided shows that visitor arrivals between 2011 and 2015 fluctuated over the period.

Table V.2: Total Monthly Visitors Arrivals to Nevis, 2011 – 2015

Month	2011	2012	2013	2014	2015	Grand Total
January	824	763	1020	802	657	4,066
February	729	715	568	713	1067	3,792
March	861	820	787	757	616	3,841
April	718	579	715	747	616	3,375
May	577	485	572	597	532	2,763
June	533	396	408	581	316	2,234
July	1,148	525	538	811	596	3,618
August	513	644	445	591	431	2,624
September	323	337	328	313	350	1,651
October	230	316	342	362	328	1,578
November	372	411	528	533	462	2,306
December	874	786	862	974	877	4,373
Total	7,702	6,777	7,113	7,781	6,848	36,221

Referring to the table that follows, the analytic data shows that the tourist arrivals to Nevis during the tourism season, has been increasing over the last three years. This can be attributed to the marketing strategies of the Nevis Tourism Authority and Ministry of Tourism.

The tourism season runs from September of one year to April of the following year. The season of 2010/2011 shows the highest number of 5,265 visitors arriving, while 2011/2012 shows the lowest of 4,676. There were steady increase in visitors for the seasons 2012/2013 to 2014/2015. (See the table following)

Table V.3: Total Visitors Arrivals to Nevis during the Tourism Season, 10/11 – 14/15

Tourism Season – Visitors Arrivals						
Year 2010/2011 to 2014/2015						
Months	2010/2011	2011/2012	2012/2013	2013/2014	2014/2015	Total
September	313	323	337	328	313	1,614
October	343	230	316	342	362	1,593
November	356	372	411	528	533	2,200
December	1,121	874	786	862	974	4,617
January	824	763	1,020	802	657	4,066
February	729	715	568	713	1067	3,792
March	861	820	787	757	616	3,841
April	718	579	715	747	616	3,375
Total	5,265	4,676	4,940	5,079	5,138	25,098

Accommodations for stayover Visitors

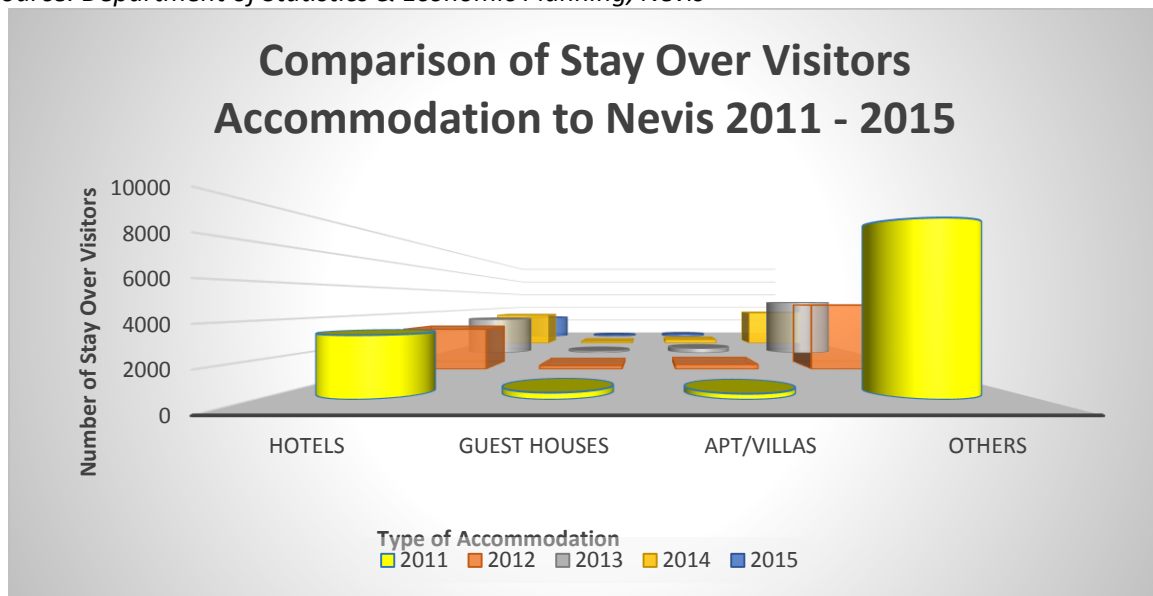
According to the Caribbean Tourism Organization (CTO) latest statistics - March 2015, it concluded that the Caribbean region grew at a faster rate than expected in 2014 for tourist arrivals. Here in Nevis, the data shows a gradual decline in stay over arrivals for various accommodations. In analyzing the period under review, stay over accommodations declined by some 12.76% or 955 by the end of 2015 when compared to 2014.

Table V.4 will also reveal that 2011 recorded the highest number of visitors with a total of 13,140. The majority of the stay over visitors stayed in hotels which accounted for 15,346 visitors over the five year period.

Table V.4: Accommodations for Stayover Visitors in Nevis, 2010– 2015

Year	2011	2012	2013	2014	2015	Total
Accommodation						
Hotel	3,265	2,920	3,219	3,307	2,635	15,346
Guest Houses	356	266	165	189	164	1,140
Apt/Villas	301	339	422	403	271	1,736
Other Accommodations	9,218	4,680	4,842	3,587	3,461	25,788
Total Stay Over	13,140	8,205	8,648	7,486	6,531	44,010

Source: Department of Statistics & Economic Planning, Nevis



Length of Stay (stay over visitors)

Length of stay refers to the average number of nights/days a guest stays in an establishment. The graph below demonstrates the various time period of stay over visitors/tourists who not only graced our shores with their presence but enjoyed the ambience of the island. The time period ranges from 1-15+ days.

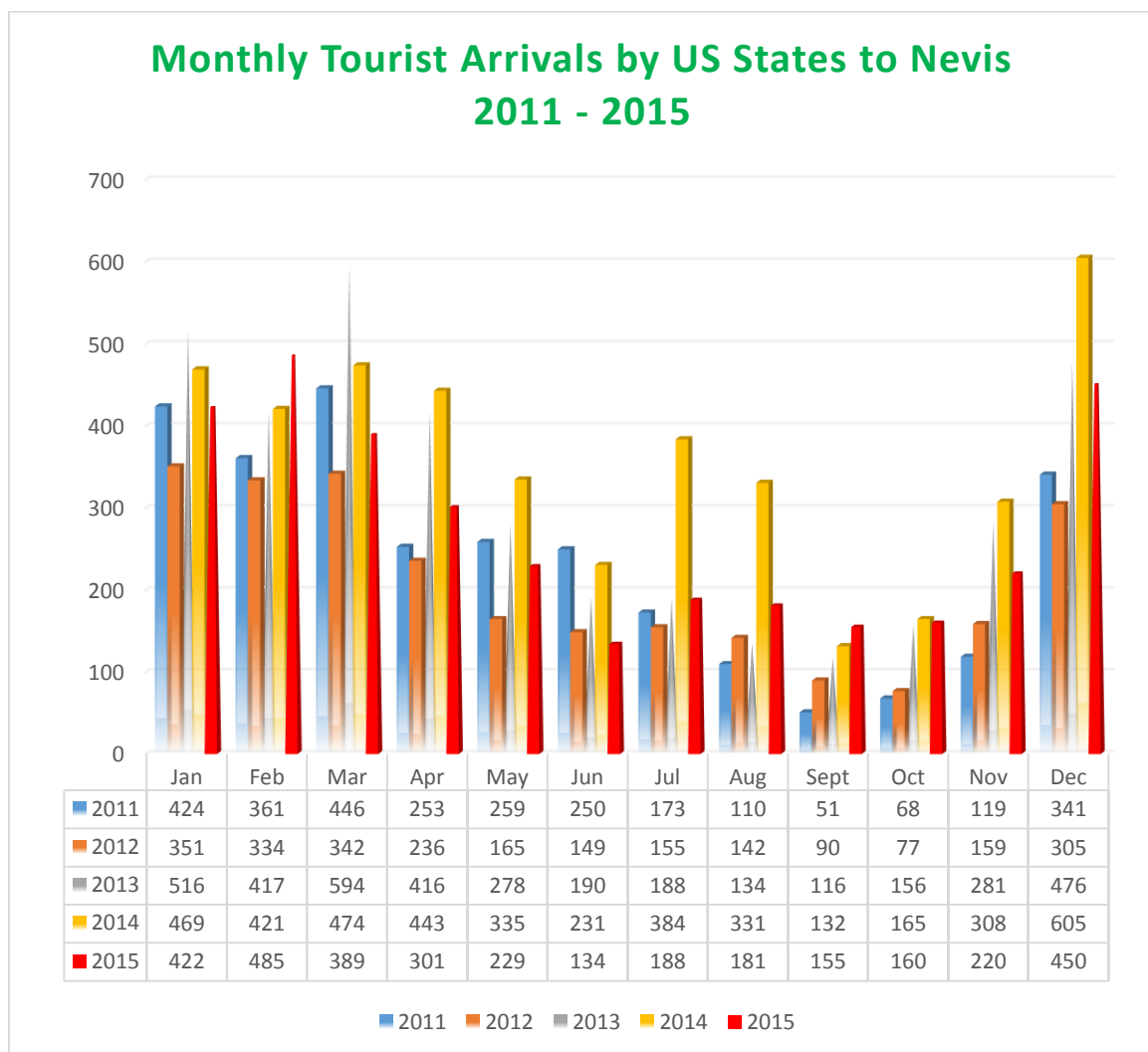


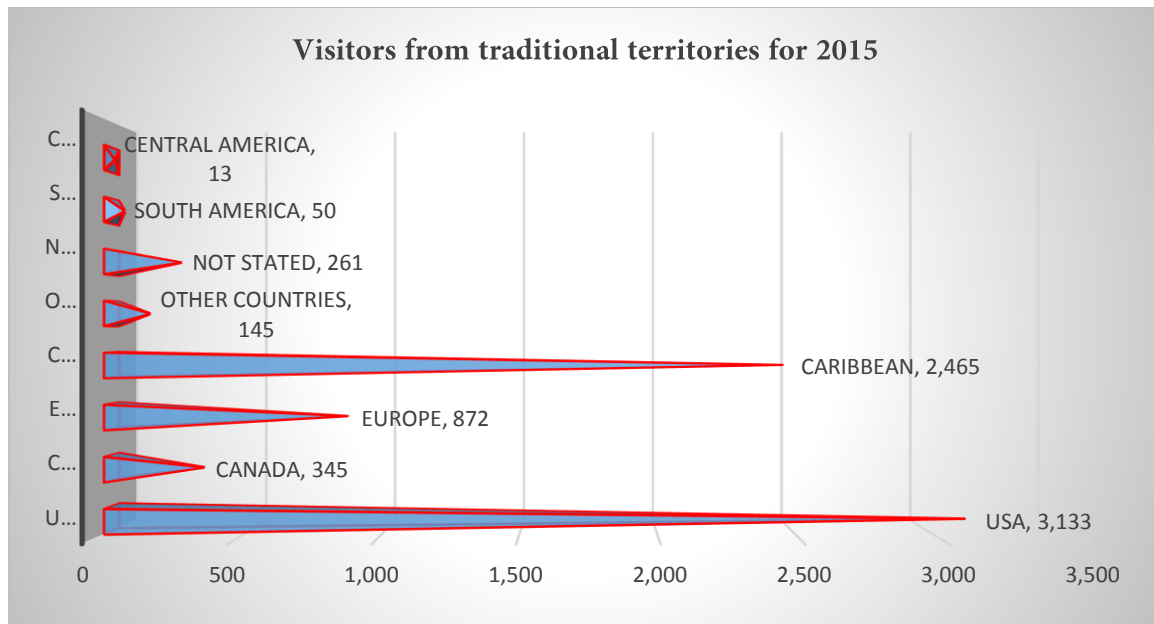
Arrivals from traditional territories

As a small developing island of 36 square miles of unspoiled beauty, the Nevis Tourism Authority continues to strategically focus its marketing and promotion efforts in a number of tourism markets for the island of Nevis.

There are established public relations representatives for the North American and UK markets; and according to the Premier of Nevis, the marketing efforts of the Nevis Tourism Authority will continue to focus on areas that will solidify the foundation to propel the island forward.

The table and graph following will show the monthly tourist arrivals from different states within the United States of America to Nevis during the period 2011 to 2015.





Yacht and Cruise Passengers

Yacht and Cruise Passenger adds to the tourist arrivals to the island. During the tourist season, while yachts call are year round, the cruise ships calls are seasonal. The information shows that between 2011/2012 the percentage change was -14.04% while 2012/2013 showed an increase of 17.1%. The year 2015 recorded the highest yacht and cruise passenger for the five year period with 9,984 passengers. The graph and table also reflects changes for each year, in comparison to the total yacht and cruise passenger arrivals.

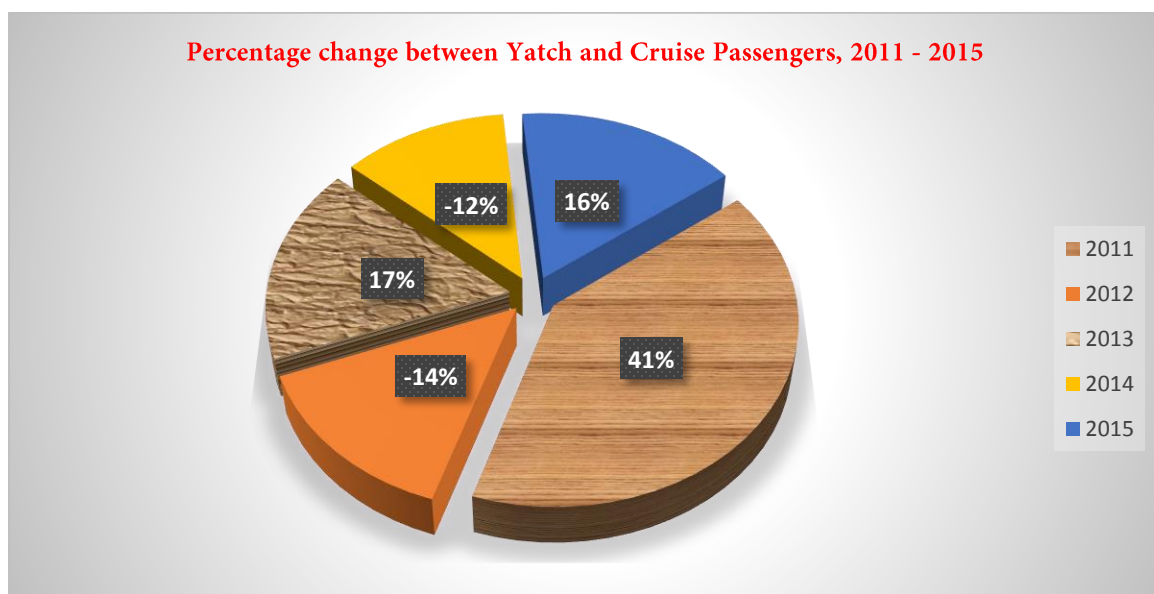
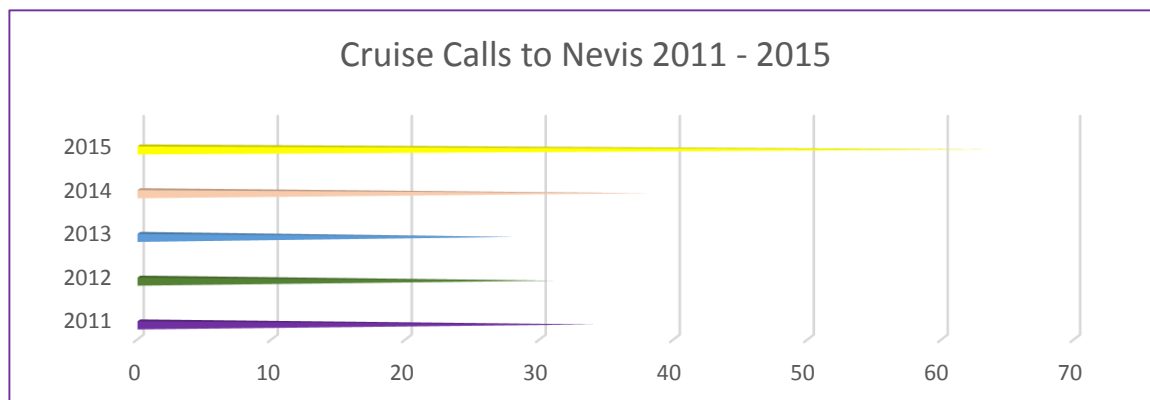


Table V.5. Percentage change per ½ year between Yacht and Cruise Passengers, 2011 – 2015

Year	Per ½ Year	Yacht Passengers	Cruise Passengers	Total Yacht and Cruise Passenger
2011	June	3,171	4,283	7,454
	December	1,293	994	2,287
	Total	4,464	5,277	9,741
Percentage change 2010/2011				39.9
2012	June	3,284	2,993	6,277
	December	1,076	1,027	2,103
	Total	4,360	4,020	8,380
Percentage change 2011/2012				(14.0)
2013	June	2,859	3,016	5,875
	December	2,890	1,048	3,938
	Total	5,749	4,064	9,813
Percentage change 2012/2013				17.1
2014	June	4,855	2,667	7,522
	December	752	360	1,112
	Total	5,607	3,027	8,634
Percentage change 2013/2014				(12.0)
2015	June	2,513	5,067	7,580
	December	775	1,629	2,404
	Total	3,288	6,696	9,984
Percentage change 2014/2015				16.0

Source: Department of Statistics and Economic Planning, Nevis

Cruise Calls



The above graph describes that cruise call in 2015 displayed a tremendous increase over 2014, of 68.42% or an additional 26 when compared to 2014. The table will also show that between 2011 and 2014, there was a declined in cruise calls. Nevertheless, when comparing 2011 to 2015, the data will show an increase of 30 cruise calls.

Yacht Calls

Yacht call also increased by 4.06% or 29 more call in 2015 over 2014. The table below also indicates that the number of yachts call had steadily declined between 2012 and 2014. In comparing 2015 to 2011, the calls to the island was reduced significantly by some 222 calls

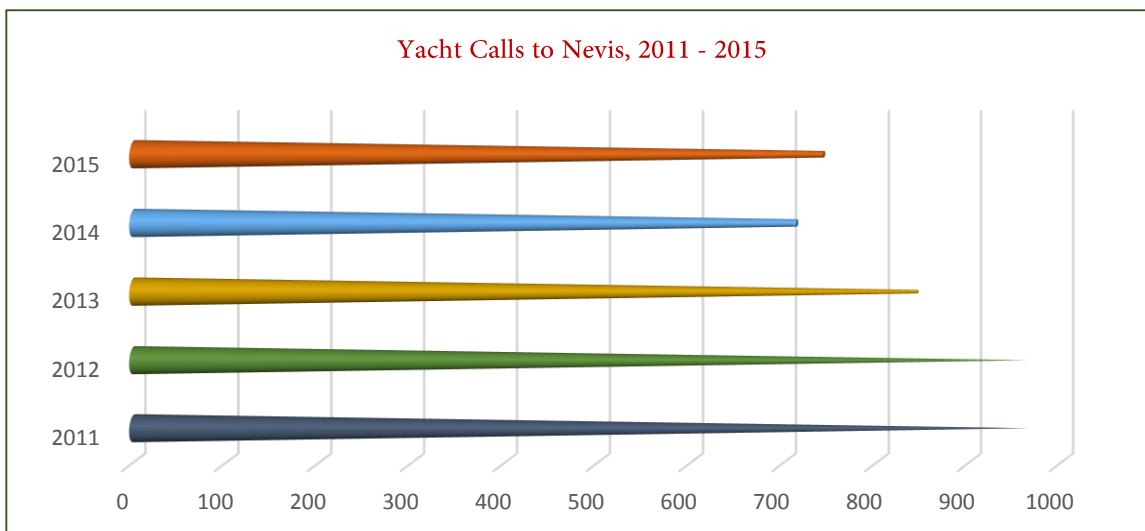


Table V.6. Number of Cruise and Yacht Calls to Nevis, 2011 – 2015

Year	Cruise Calls	Yacht Calls
2011	34	965
2012	31	963
2013	28	844
2014	38	714
2015	64	743
Total	195	4,229

The review period 2011 to 2015, showed an overall total of 7,184 yacht passengers visiting our shore with 25,083 cruise passengers. 2015 showed a year of increase in both yacht and cruise passengers after varied increases and decreases throughout the five year period.

Table V.7. Number of Cruise and Yacht Passengers to Nevis, 2011 – 2015

Year	Yacht	Cruise
2011	496	5,277
2012	572	4,020
2013	1,813	4,064
2014	1,015	5,026
2015	3,288	6,696
Total	7,184	25,083

Tourism Season - Cruise Calls						
Year 2010 to 2015						
Months	2010/2011	2011/2012	2012/2013	2013/2014	2014/2015	Total
September	0	1	0	0	0	1
October	0	0	0	0	0	0
November	2	2	5	1	6	16
December	5	7	5	4	15	36
January	5	2	12	6	12	37
February	8	7	2	6	15	38
March	9	8	4	4	15	40
April	2	4	4	1	3	14
Total	31	31	32	22	66	182

Tourism Season - Cruise Passengers						
Year 2010/2011 to 2014/2015						
Months	2010/2011	2011/2012	2012/2013	2013/2014	2014/2015	Total
September	0	31	0	0	0	31
October	0	0	0	0	0	0
November	117	137	488	145	360	1,247
December	845	826	539	903	1999	5,112
January	666	193	1,312	801	2255	5,227
February	1,121	919	228	1,009	1228	4,505
March	2,233	1,504	954	755	1230	6,676
April	263	377	522	102	346	1,610
Total	5,245	3,987	4,043	3,715	7418	24,408

Tourism Season - Yacht Calls						
Year 2010/2011 to 2014/2015						
Months	2010/2011	2011/2012	2012/2013	2013/2014	2014/2015	Total
September	11	14	9	3	13	50
October	22	25	26	22	23	118
November	32	49	58	53	37	229
December	81	102	72	68	65	388
January	143	141	111	84	103	582
February	146	139	123	125	126	659
March	196	182	145	152	173	848
April	103	144	139	87	101	574
Total	734	796	683	594	641	3,448

Tourism Season - Yacht Passengers						
Year 2010/2011 to 2014/2015						
Months	2010/2011	2011/2012	2012/2013	2013/2014	2014/2015	Total
September	0	1	0	0	92	93
October	0	0	15	65	118	198
November	0	8	0	167	29	204
December	138	161	99	967	152	1,517
January	19	133	160	29	53	394
February	102	96	73	95	84	450
March	134	116	161	106	147	664
April	28	65	46	116	52	307
Total	421	580	554	1,545	727	3,827



Nurse Jean Tyson administers a blood pressure check to a staff member of the St. Christopher and Nevis Social Security Board branch in Nevis when the health sector performed screening sessions at business places.

Chapter Six

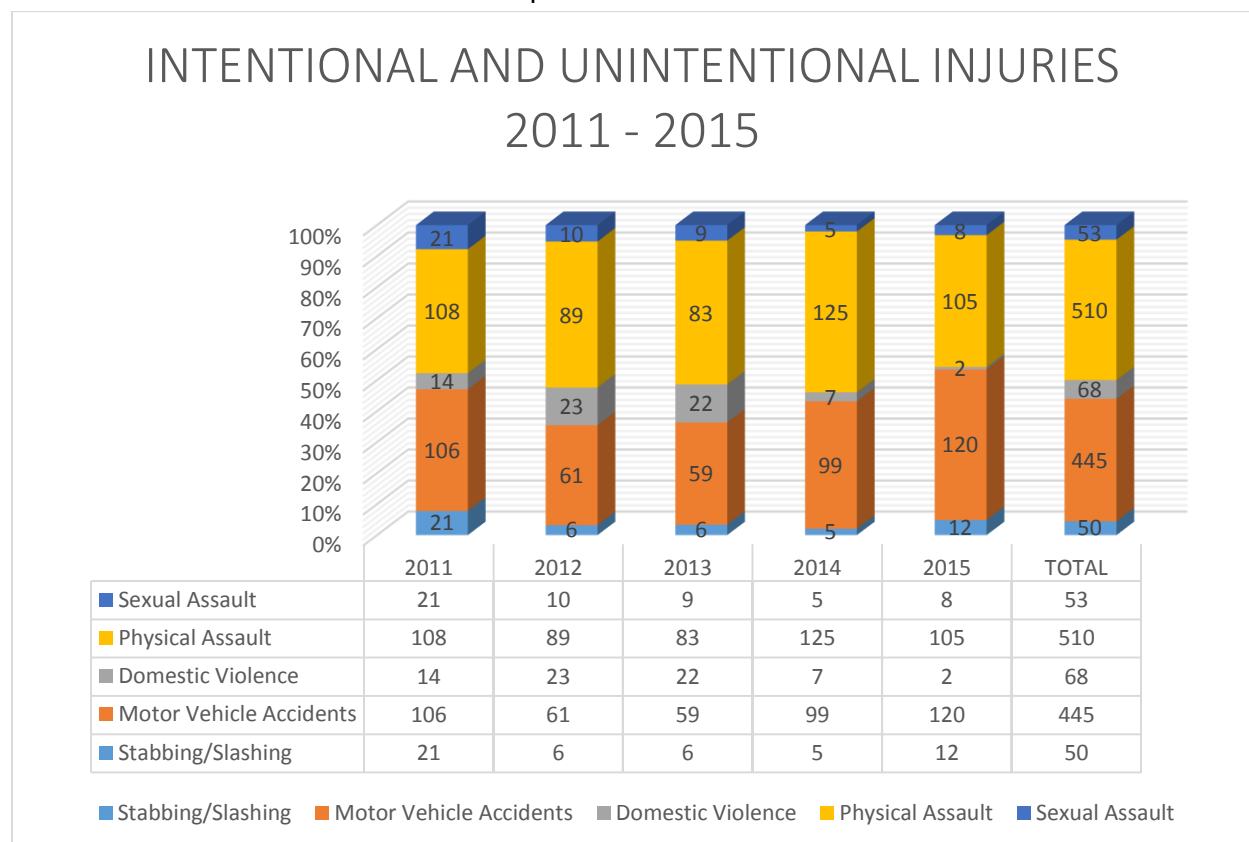
Health and Social

Health facts

As policy makers, health statistics is one of the indicators used to provide information as it relates to the public health and the economic burden associated with intentional and unintentional injuries.

Based on the information provided from the Health Promotion Unit, the graph below shows data for intentional and unintentional injuries recorded at the Alexandra Hospital for the period 2011 to 2015. The overall highest being physical assaults with 510 injuries.

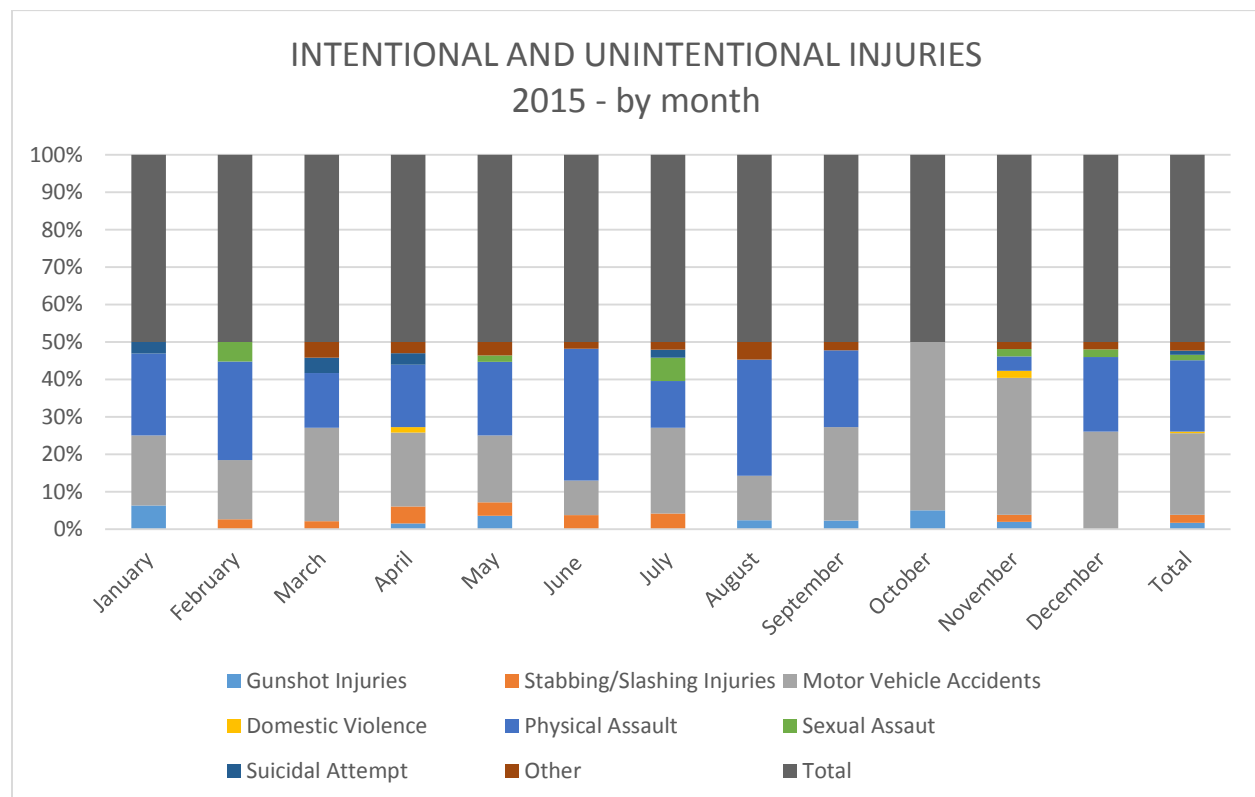
Stabbing/stashing injuries and sexual assaults have shown constant decrease between 2011 and 2014 then a significant increase based on percentage of 60% and 140% respectively. Statistics revealed that for domestic violence, there was a drastic decrease between 2012 and 2015 of 21 cases or 91%. Excellent indication of improved social relations.



The highest number of motor vehicle accidents recorded over the five year period was in 2015 with 120 a 10% and 21% increase when compared to 2011 and 2014 respectively. In 2011 106

injuries were recorded representing the second highest number of injuries in that five year period. Physical Assault decline steadily between 2011 and 2013 then a sharp increase of 51% in 2014, then a 16% decrease in 2015.

In 2014 there were additional types of injuries that were not recorded in previous years. These include gunshot injuries with 11, suicidal attempts 3 and other 8 alongside the 5 in stabbing, 99 in motor vehicle accidents, 7 in domestic violence, 125 in physical assault and 5 in sexual assault. These figures will be captured in the next 3 years so as to allow for reasonable analysis of trend.



Diabetic & Hypertensive Cases

According to the collected data, inquiries revealed that 482 diabetic patients were registered at the end of 2015, of which 21 are new cases. This figure also shows a slight decline in the number of registered cases between 2014 and 2015; and between 2013 and 2015 at the various health centers. The same can be said for the hypertensive cases where a total of 526 patients are registered at the various health centers on the island by the end of 2015. This also shows a decrease of 11 cases when compared to 2014. In comparing 2015 to 2011, the number of registered cases increased by 36 or by some 8%. (see tables on next page)

Table VI.1. Registered Diabetic Patients at different Health Centre in Nevis, 2011–2015

Health Centre	2011		2012		2013		2014		2015		Overall Total
	M	F	M	F	M	F	M	F	M	F	
Charlestown	51	105	48	104	47	108	47	88	50	106	754
Brown Hill	22	38	23	34	19	36	21	34	18	36	281
Gingerland	57	107	51	100	53	94	57	97	49	86	751
Butlers	10	33	9	31	6	36	12	36	15	32	220
Combermere	12	35	14	38	12	39	13	37	13	32	245
Cotton Ground	17	24	15	28	19	28	20	25	18	27	221
Yearly Total	169	342	160	335	156	341	170	317	163	319	2,472
	511		495		497		487		482		

Table VI.2. Registered Hypertensive Patients at different Health Centre in Nevis, 2011–2015

Health Centre	2011		2012		2013		2014		2015		Overall Total
	M	F	M	F	M	F	M	F	M	F	
Charlestown	40	89	42	85	48	76	80	40	39	81	620
Brown Hill	22	41	22	40	20	38	20	36	18	38	295
Gingerland	46	103	42	101	61	114	107	54	51	108	787
Butlers	9	17	7	16	17	26	27	46	31	44	240
Combermere	18	48	21	47	16	46	17	42	19	34	308
Cotton Ground	16	41	19	39	19	41	21	47	21	42	306
Yearly Total	151	339	153	328	181	341	272	265	179	347	2,556
	490		481		522		537		526		

Source: Health Promotion Unit, Nevis

Dental Statistics

Our dental units operate at two locations on the island: the Charlestown and Gingerland Health Centres where the aim is to provide healthy smiles to all individuals. One major program that the dental units strive to implement and improve each year is regular oral checkups for all Primary School Students. Over the five years under review, there were a total of 7,717 children and 8,051 adults treated at both dental units. There are seven different types of services rendered by the dental units such as extraction, fillings, prophylaxis/cleaning, sealants, root canal and examinations. In 2014, the highest services rendered was 1,241 in fillings while the other showed 1,054 in prophylaxis/cleaning, 705 in examinations, 541 in extraction, 81 in other service, 27 in sealants and 24 in root canal.

Table VI. 3: Dental Unit trend by Services Rendered and by Patients 2011–2014

Year	Services Rendered								Patients		
	Extraction	Fillings	Prophylaxis/Cleaning	Sealants	Root Canal	Examinations	Other	Totals	Adults	Children	Total
2011	426	1,023	539	78	40	977	33	3,116	1,296	1,543	2,839
2012	356	1,098	977	40	42	1,096	70	3,679	1,402	1,556	2,958
2013	423	778	1,523	7	17	1,154	94	3,996	1,265	1,759	3,024
2014	541	1,241	1,054	27	24	705	81	3,673	2,075	1,164	3,239
Total	1,740	4,140	4,093	152	123	3,932	278	14,464	6,038	6,022	12,060

Source: Health Promotion Unit, Nevis

The two tables below display a total of 720 HIV/AIDS tests conducted for 2014; 262 were males, 436 females and 22 unknown genders. The results of these tests showed that there were two positive cases and 718 negative cases. Throughout the year, the 2nd quarter showed the highest number of tests done with 264, followed by 4th quarter 194, 1st quarter 133 and 3rd quarter 129.

Table VI.4. HIV/AIDS Laboratory Cases at the Alexandra Hospital, 2014

Month		Alexandra Hospital Laboratory					
		No. of Tests Done	Male	Female	Unknown Gender	No. of Positives	No. of Negatives
1st Qtr	JAN	34	11	22	1	0	34
	FEB	21	7	13	1	0	21
	MAR	34	12	19	3	0	34
2nd Qtr	APR	22	8	12	2	0	22
	MAY	40	11	27	2	1	39
	JUN	162	70	92	0	0	162
3rd Qtr	JUL	28	5	23	0	0	28
	AUG	24	5	15	4	0	24
	SEO	29	8	20	1	1	28
4th Qtr	OCT	22	6	15	1	0	22
	NOV	29	10	19	0	0	29
	DEC	102	43	58	1	0	102
TOTAL		547	196	335	16	2	545

Source: Health Promotion Unit, Nevis

Table VI.5. HIV/AIDS Laboratory Cases at the Avalon Medical Centre, 2014

Month		Avalon Medical Laboratory (Pte)					
		No. of Tests Done	Male	Female	Unknown Gender	No. of Positives	No. of Negatives
1st Qtr	JAN	12	5	7	0	0	12
	FEB	12	6	6	0	0	12
	MAR	20	10	10	0	0	20
2nd Qtr	APR	15	5	10	0	0	15
	MAY	11	2	9	0	0	11
	JUN	14	4	10	0	0	14
3rd Qtr	JUL	15	5	10	0	0	15
	AUG	21	9	12	0	0	21
	SEO	12	4	8	0	0	12
4th Qtr	OCT	14	6	8	0	0	14
	NOV	14	6	8	0	0	14
	DEC	13	4	3	6	0	13
TOTAL		173	66	101	6	0	173

Source: Health Promotion Unit, Nevis

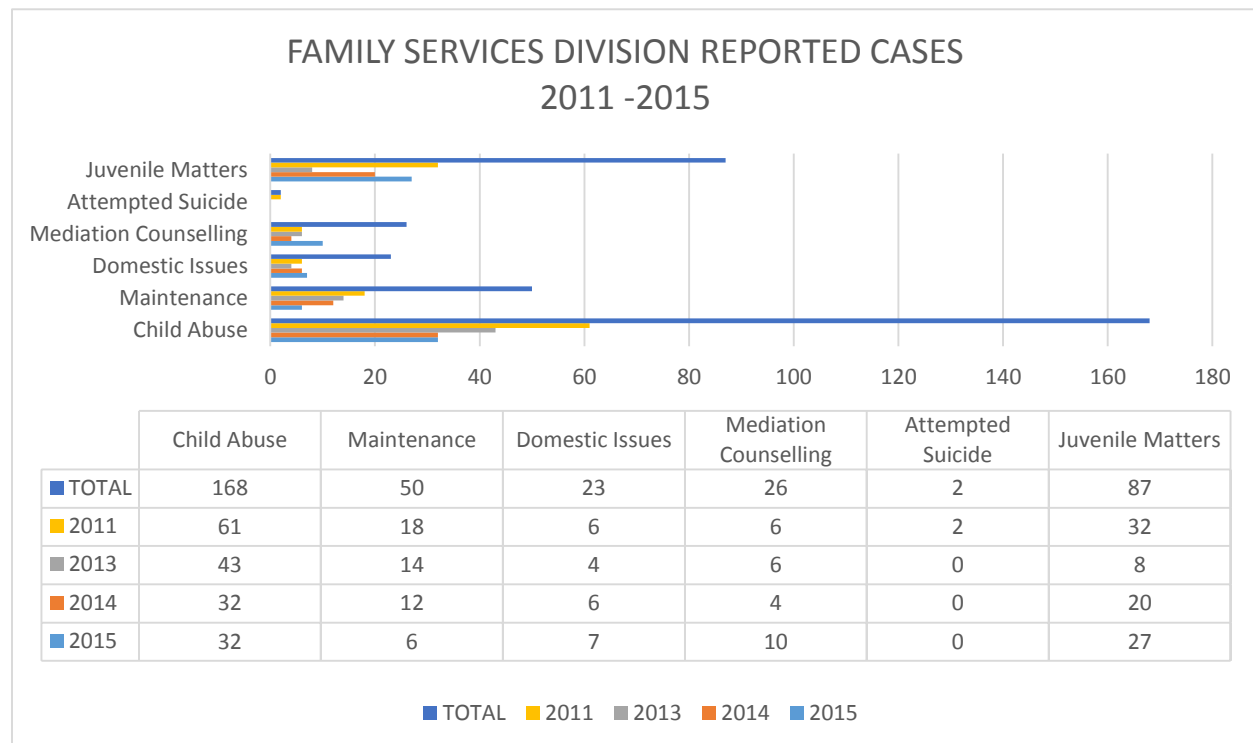
Social Statistics

Social services are a range of public services provided by governmental or private organizations. These public services aim to create more effective organizations, build stronger communities, and promote equity and opportunity.

Social services include the benefits and facilities such as education, food subsidies, health care, job training and subsidized housing, adoption, community management, policy research, and lobbying. For this purpose, the Social Services Department on Nevis help to strengthen the protection of children at risk, the elderly and persons in need by ensuring equality and human rights among all in society.

The Family Services Division is the unit that caters to the needs of families, mainly the less fortunate ones. According to the data collected from the Family Services Division, a total of 168 cases were reported for the period 2011 – 2015, in various categories as follows; child abuse, maintenance, domestic issues, counseling/mediation, attempted suicide, juvenile matters and incest.

This is followed by Juvenile Matters 87, Maintenance 50, Mediation Counselling 26, Domestic Issues 23 and Suicidal Attempt 2. However, between 2011 and 2015 there was a drastic decline



in Child Abuse cases of 29 or 47.5%. There were marginal decreases in the other areas except for Domestic Issues which saw a minute increase of just 1 case.

Gender Affairs

The Nevis Island Administration has created programs to provide services to the senior citizens of the island. The provision of hot meals to the less fortunate elderly in each community; administered by the Gender Affairs Division in the Social Services Department. Information gathered from the Gender Affairs Division shows that there were a total of 345 persons taking part in the hot meal services for the period 2011 to 2015. By the end of 2015, there were 74 persons enlisted at the end of 2014, a 2.7% increase. The graph adjacent shows the ratio between males and females participation.

Source: Social Services Department, Nevis

<i>Hot Meals program by Parish and Gender, Nevis</i>				
2011	St Pauls	3	2	5
	St Thomas	6	12	18
	St Johns	4	6	10
	St James	7	7	14
	St George	3	9	12
Total		23	36	59
2012	St Pauls	5	8	13
	St Thomas	3	4	7
	St Johns	8	12	20
	St James	6	8	14
	St George	3	11	14
Total		25	43	68
2013	St Pauls	9	11	20
	St Thomas	5	3	8
	St Johns	6	9	15
	St James	6	10	16
	St George	2	11	13
Total		28	44	72
2014	St Pauls	9	9	18
	St Thomas	6	3	9
	St Johns	6	9	15
	St James	7	13	20
	St George	2	8	10
Total		30	42	72
2015	St Pauls	8	9	17
	St Thomas	7	3	10
	St Johns	7	9	16
	St James	8	13	21
	St George	2	8	10
Total		32	42	74



Nevis is popular with private investors as it offers a full range of financial services and products. Private investors can maximize on their corporate and personal wealth management portfolio.

Chapter Seven

finance

The Ministry of Finance is responsible for issues concerning central government finances, including coordination of the government budget and tax issues. It also has the mandate to formulate economic and fiscal policy in order to realize balanced and sustainable economic growth as well as to reduce poverty.

NIA Revenue & Expenditure

The table below displays the actual Current and Capital Revenue and Expenditure, for the period 2011 – 2015 of the Nevis Island Administration financial position.

	Actual 2011	Actual 2012	Actual 2013	Actual 2014	Actual 2015
Current Revenue	119,585,846	116,514,870	121,055,560	128,468,450	133,857,250
Current Expenditure	136,052,429	126,131,653	125,250,230	133,995,785	130,488,336
Capital Revenue	34,719,183	19,141,026	8,272,370	13,163,251	26,640,030
Capital Expenditure	38,296,272	17,681,686	9,634,700	23,548,636	25,927,065

Source: Ministry of Finance, Nevis

The fiscal year under review, has shown strong economic growth of the island's Current Revenue for the last three years. With an average of 8% of economic growth, the Current Revenue at the end of 2015 stood at over ECD \$133 million. This shows an increase of some five percent when compared to the actual current revenue of over ECD \$128 million by the end of 2014.

While Current Expenditure displayed a slight decrease by a 3% margin at the end of 2015, Capital Expenditure increased by a margin of 11%. Several factors contributed to the increase in Capital Expenditure thus reflecting improvements on the country's sustainability. At the end of 2015, Current Revenue stood at ECD \$133,857,250 in comparison to the budgeted figure of 130,058,987 for 2015, while the actual figure for 2014 stood at \$128,468,451.

Table: VII.2: Revenue and Expenditure Analysis in Nevis, 2011 - 2015

Items	2011R Actual	2012 Actual	2013 Actual	2014 R Actual	2015 Actual
Sources of Revenue					
Reg. of Offshore Cos.& Trust	11,420	11,657	12,518	12,764	13,843
Annual Fees	7,834	7,773	8,324	8,476	12,699
Consumption Tax	388	217	297	39,614	215
Import Duties	9,715	8,716	9,625	10,620	11,580
Hotel Room & Restaurant Tax	838.40	13	0	0	0
Other	89,447	99,655	98,564	58,885	95,519
Total Recurrent Revenue	119,642	128,031	129,328	130,059	133,856
Application of Revenue					
Personal Emoluments	36,834	37,412	40,362	43,662	43,094
Wages	18,449	18,702	20,082	21,231	22,191
Retiring Benefits	6,130	7,631	7,943	7,934	7,944
Loan Repayment	25,697	9,349	10,685	9,204	6,982
Interest Payment	22,054	21,803	18,058	16,689	15,463
Total non-discretionary Expenses	109,164	94,897	97,130	98,720	95,674
Other	1,191	21,886	17,435	26,072	27,832
Total Recurrent Expenditure	110,355	116,783	114,565	124,792	123,506
Recurrent Surplus/(deficit)	9,287	11,248	14,763	5,267	10,350
Total Capital Expenditure	38,296	51,801	9,635	23,549	25,927
Total Expenditure	148,651	168,584	124,200	148,341	149,433
Capital Revenue	34,719	34,566	8,272	13,163	26,640
Total Revenue	154,361	162,597	137,600	143,222	160,496
Total Surplus/(Deficit)	5,710	-5,987	13,400	-5119	11,063
Debt Service/Recurrent Revenue (%)	39.6	24.3	22.2	19.9	16.8
Debt Service/Recurrent Expenditure (%)	43.3	26.7	25.1	20.7	18.2
Recurrent Revenue Growth (%)	-28.6	-7.0	-1.0	-0.6	-2.9
Recurrent Expenditure Growth (%)	10.5	-5.8	1.9	-8.9	1.0
Capital Expenditure Growth (%)	-1.5	-35.3	81.4	-144.4	-10.1
Increment in Personal Emoluments (%)	3.7	-1.6	-7.9	-8.2	1.3
Increment In Wages (%)	-25.40	-1.37	-7.4	-5.72	-4.52
Increment Retiring Benefits (%)	-36.2	-24.5	-4.1	0.1	-0.1
Non-Discretionary/Recurrent Exp. (%)	98.9	81.3	84.8	79.1	77.5
Non-Discretionary/Total Exp. (%)	73.4	56.3	78.2	66.5	64.0
Non-Discretionary/ Recurrent Rev (%)	91.2	74.1	75.1	75.9	71.5
PE & Wages/Recurrent Expenditure	50.1	48.0	52.8	52.0	52.9
PE & Wages/Recurrent Revenue	46	44	47	50	49

Source: The Ministry of Finance, Nevis (Figures are revised)

The Inland Revenue Department

The Inland Revenue Department is one of the main hub for Government revenue. They are charged with the responsibility of collecting taxes due and payable. Table VII.3 displays statistics which were solely collected by the Inland Revenue Department. The different types of taxes were chosen to meet official statistics system criteria and to reflect a strong analysis of the different financial periods. Over the five year period (2011-2015) the revenue was buoyant with increases and decreases throughout the years. There was a marginal increase at the end of 2015 over 2014 by 3.63%. The total revenue collected as at December 31, 2015 was \$58,826,154 with the three major contributors being Value Added Tax of \$17,718,414 Stamp Duty (transfer) of \$13,216,773 and Social Security Levy of \$9,103,008

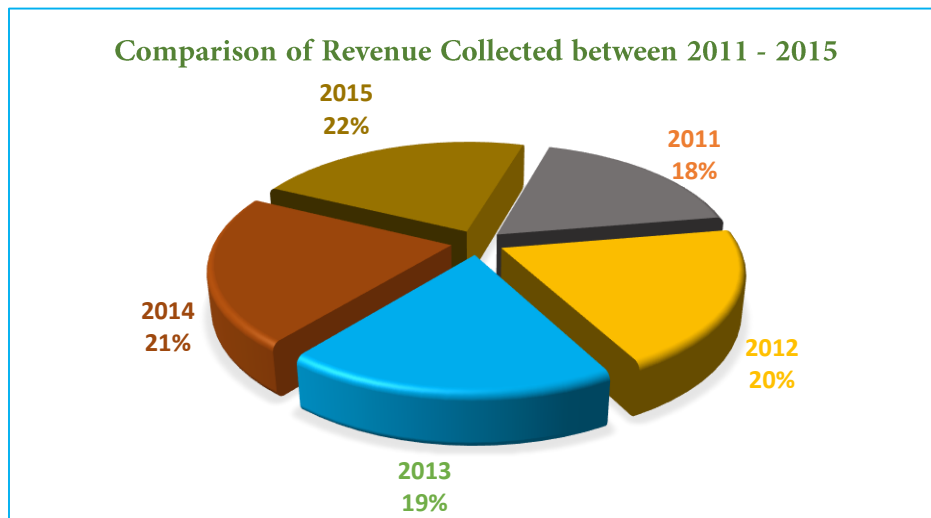
Table VII.3. Inland Revenue – Taxes collected by tax type in Nevis, 2011 – 2015

Type of Taxes	2011	2012	2013	2014	2015
Bank Licence	120,000	104,000	106,000	110,000	108,000
Boat Licence	388,861	0	0	0	0
Bus. & Occup Licence	0	448,670	476,474	480,798	570,839
Coastal Levy	101,314	188,565	296,827	499,651	298,185
Consumption Tax	26,955	14,990	8,704	7,131	7,821
Corporate Income Tax	4,835,771	5,348,219	3,094,230	4,190,415	0
Dog Licence	278	0	0	0	0
Driver Licence	316,315	339,190	357,100	341,929	395,319
Electricians License	0	34,320	2,788	0	0
Hotel & Restaurant Tax	839	13,343	0	0	0
Income Tax	0	0	0	0	4,100,088
Insurance Prem. Tax	341,294	350,641	636,419	392,633	463,261
IRD fines	0	0	125	0	0
Licence - Unclassified	345,922	139,443	610,737	645,480	544,474
Liquor Licence	65,243	57,706	53,414	57,341	72,714
Property Tax	2,167,716	2,294,492	2,423,394	2,559,83	2,720,936
Property Tax - Cards	7,923	0	0	0	0
Radio Licence	0	0	0	0	129,392
Social Serv. Levy- Nv	0	0	6,950,458	7,102,313	0
Social Services Levy	7,833,800	7,773,406	1,373,659	1,373,330	9,130,008
Stamp Duty (Bank Cheque)	21,114	18,031	15,179	12,965	0
Stamp Duty Probate	7,532	0	0	0	0
Stamp Duty Unclassified	1,001,982	4,086,201	1,756,907	3,552,937	3,012,448.98
Stamp Duty (Transfer)	11,535,401	12,393,352	10,525,650	12,225,608	13,216,774
Temp Driver Licence	112,550	123,935	113,813	101,350	88,978
Temp Liquor Licence	8,820	5,200	8,440	4,160	0
Tourism Dev. Levy	246	814,748	2,195,352	2,425,729	2,367,023
Trader Tax	451,437	11,795	12,459	4,756	3,261

Travel Tax	387,607	357,187	285,650	269,441	264,078
Travel Tax (Unclassified)	6,866	38,182	968	2,829	0
Unclassified Fees	0	25	0	0	0
Unincorp. Bus (Ret)	551,107	468,429	494,420	523,453	0
Unincorp. Bus. (Ser)	403,529	476,790	446,673	552,238	1,326,820
Value Added Tax	14,034,196	14,621,953	15,478,709	17,062,048	17,718,414
Vehicle Rental Levy	569	0	0	0	1,600
Wheel Tax	1,978,067	1,926,856	1,942,455	1,906,203	2,191,896
Withholding Tax	399,881	121,570	101,125	327,488	93,832
TOTAL	47,453,135	52,571,239	54,217,911	54,172,226	58,826,162

Source: Nevis Inland Revenue Department

The following chart displays that of the total revenue collected by the Department over the five year period under review.



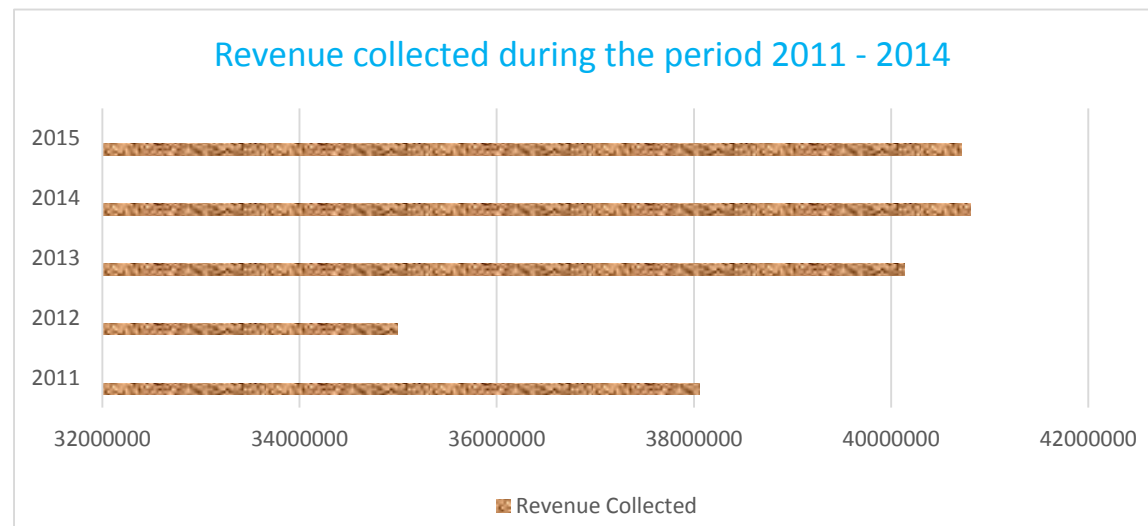
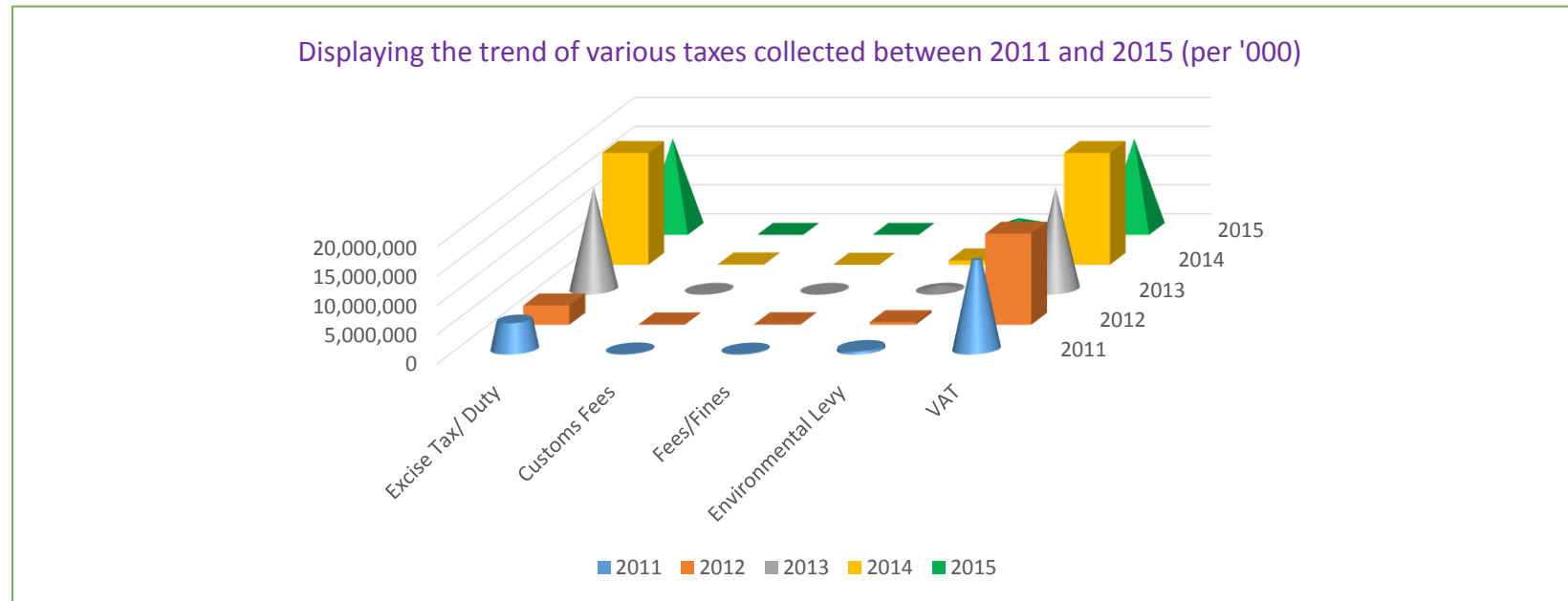
The Customs Department

The Customs Department, is another integral part of the Nevis Island Administration that provides another source of revenue in collection of taxes, duties and fees. The illustrated table below represents a breakdown of taxes collected between 2011 and 2015. Value Added tax (VAT) and Custom Duty are the two taxes that generated the highest revenue yields in 2015 with 15,515,058 and 11,275,035 respectively. Environmental Levy which is a tax imposed on the importation of vehicles has seen a steady increase over the five year period moving from 493,970 in 2011 to 1,858,936 in 2015. Consumption Tax showed a continuous decline over the five year period due to the introduction of VAT which showed 317,486 collected in 2011 compare to 24,954 in 2015.

Table VII.4: Revenue collected by the Customs & Excise Department, Nevis 2011 – 2015

Revenue Collected	2011	2012	2013	2014	2015
Customs Duty	9,605,565	8,713,231	10,024,739	10,585,564	11,275,035
Excise Tax & Duty	5,087,640	3,299,746	5,128,931	3,772,908	4,323,952
Value Added Tax	15,334,660	15,562,356	17,444,757	19,168,921	15,515,058
Consumption Tax	317,486	139,746	66,919	35,496	24,954
Alcohol Duty	106,938	155,549	106,720	34,134	167,589
Environmental Levy	493,970	446,953	711,564	749,128	1,858,935
Custom Service Charge	6,966,711	6,424,845	6,391,417	6,235,142	7,361,604
Unclassified	7,024	43,500	8,252	140,865	86,234
Custom Fees	50,440	54,774	62,925	64,320	64,550
Yacht Fees	15,200	13,090	11,680	12,900	13,520
Fees & Fines	23,517	83,500	7,500	4,000	26,870
Bottle Levy	46,395	51,455	169,354	0	0
Gains on Exchange	0	0	0	37	60
TOTAL	38,055,546.00	34,988,745.00	40,134,758.00	40,803,415.00	40,718,361.00

Graph VII.2: Trend of certain taxes collected in Nevis, 2011 – 2015



The Financial Services

The Financial Services sector is one of the most crucial sectors of the Nevis Economy. Over the past five years, tremendous growth occurred in this sector. The number of new Nevis Business Corporation Ordinance had significantly decreased since 2013 as well as the LLC's and Trusts. Overall the registration of new businesses dropped from 2,693 in 2014 to 2143 in 2015 or a decrease of 20.42%.

Table VII.5. Number of New Companies (NBCOs, LLCs, Trusts, Foundations) Registered in Nevis, 2011 – 2015

YEARS	No. of NBCO's	No. of LLC'S	No. of TRUSTS	NO. OF FOUNDATIONS	TOTAL
2011	1,569	997	153	17	2,736
2012	1,573	1,110	113	23	2,819
2013	5,181	1,930	474	34	7,619
2014	1,669	868	131	25	2,693
2015	1,365	661	90	27	2,143
TOTAL	11,357	5,566	961	126	18,010

Source: *Nevis Financial Services*

There has been gradual increases in the number of active entities in Nevis between 2011 and 2014 with a slight decrease been recorded in 2015. This slight decrease is in the amount of 576 which indicates that some of the active entities has ceased to operate.

Table. VII.6 Number of Active Entities in Nevis between 2011 and 2015

Years	No. of NBCO's	No. of LLC'S	No. of TRUSTS	NO. Of FOUNDATIONS	Offshore Bank	Total
2011	11,366	4,449	1,064	92	1	16,972
2012	11,590	4,938	1,022	92	1	17,643
2013	11,628	5,086	877	97	1	17,689
2014	11,928	5,159	1,093	103	1	18,284
2015	11,843	4,970	780	114	1	17,708

Over the five year period, the revenue collected by the Nevis Financial Services Department has been steadily growing. This is seen where the annual revenue moved from \$11,422,441 in 2011 to \$13,929,042 in 2015. It is also noted that the first and last quarters of each year under review shows significant revenue collection. The increase between 2014 and 2015 is \$1,076,628 or 8.38%.

Table VII.7. Revenue collected Quarterly by the Nevis Financial Services Sector, 2011 – 2015

Month per 1/4	2011	2012	2013	2014	2015
March	3,111,154	3,313,692	3,170,458	3,860,479	3,976,162
June	2,897,805	2,718,013	3,477,351	2,806,234	3,252,282
September	2,497,182	2,692,861	2,637,870	2,834,382	3,139,539
December	2,916,300	3,048,039	3,392,872	3,351,319	3,558,060
Total	11,422,441	11,772,605	12,678,551	12,852,414	13,926,043

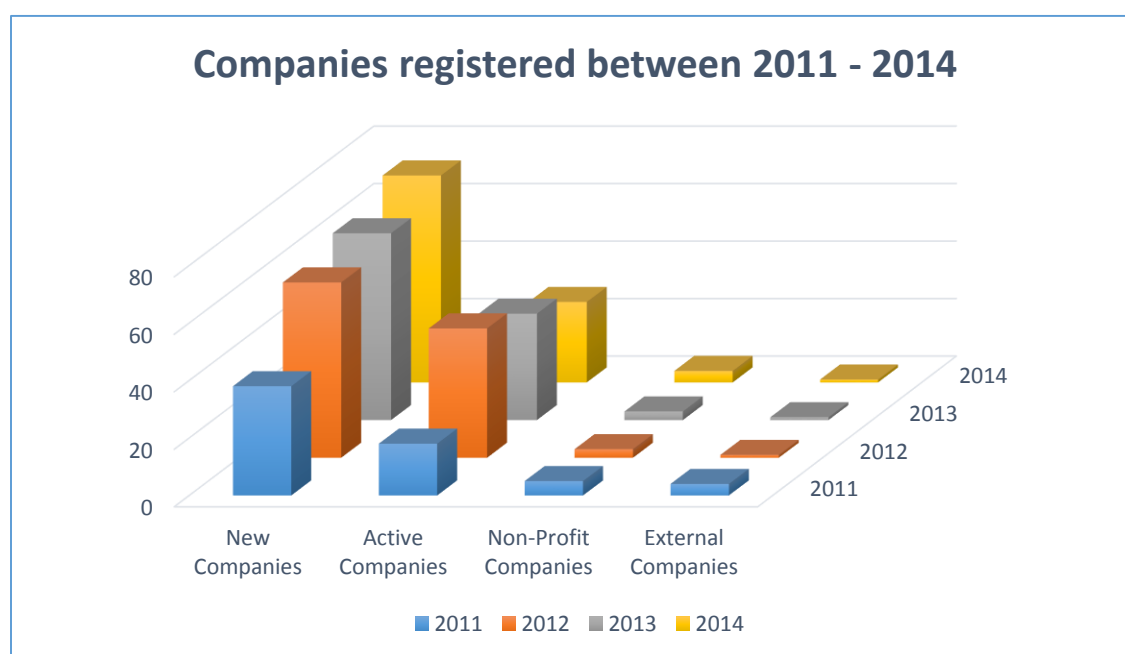
Company Registry

According to the figures released by the Company Registry, a total of 491 companies (exclude NBCO, LLC, Trusts and Foundation) were registered over the period under review. Statistics showed that by the end of 2014, 285 new companies were registered. In addition, by the end of that said year, the record showed there were 167 active companies; 27 non-profit companies and 12 external companies.

Table. VII.8. Number of Companies (non LLCs, NBCOs, Trusts, Foundations) Registered, 2011 – 2014

Status	2011	2012	2013	2014	Total
New	38	61	65	72	236
Active	25	48	42	28	143
Non-Profit	5	3	3	4	15
External	4	1	1	1	7
Total	72	113	111	105	401

Source: Company Registry, NIA



St. Kitts and Nevis Gross Domestic Product (Basic Current/Constant)

Table.VII.9: St. Kitts and Nevis Gross Domestic Product by Economic Activity at Basic Current Prices 2011-2015
(EC\$ mill)

INDUSTRIES	2011	2012 Prel	2013 Prel	2014 Prel	2015 Est
Agriculture	19.54	18.04	20.61	19.85	18.43
Crops	12.26	11.35	13.72	11.80	10.03
Sugar	0.00	0.00	0.00	0.00	0.00
Other crops	12.26	11.35	13.72	11.80	10.03
Livestock	6.70	6.11	6.29	7.44	7.77
Forestry	0.57	0.58	0.59	0.61	0.63
Fishing	9.69	9.12	8.93	8.98	9.46
Mining & Quarrying	1.44	1.44	2.37	3.06	3.18
Manufacturing	186.40	213.46	193.42	199.96	195.85
Sugar	0.00	0.00	0.00	0.00	0.00
Other	186.40	213.46	193.42	199.96	195.85
Electricity & Water	26.23	30.09	29.92	30.88	30.90
Electricity	17.76	17.95	17.87	18.23	19.08
Water	8.47	12.13	12.05	12.65	11.83
Construction	217.63	195.81	247.07	288.45	337.31
Wholesale & Retail Trade	135.80	142.89	152.33	165.69	190.43
Hotels & restaurants	102.83	105.72	111.20	118.69	126.02
Hotels	98.98	101.77	107.05	114.19	121.22
Restaurants	3.85	3.95	4.15	4.50	4.80
Transport, Storage and Communications	224.18	224.09	240.76	267.97	300.20
Transport and Storage	137.47	137.00	152.37	175.48	203.48
Road	85.48	89.46	103.84	118.01	136.60
Sea	0.70	0.69	0.71	0.90	1.09
Air	1.11	1.25	1.28	1.37	1.48
Supporting and auxiliary transportation activities	50.18	45.59	46.54	55.21	64.31
Communications	86.70	87.10	88.39	92.48	96.72
Financial Intermediation	120.61	113.82	118.00	125.10	135.41
Banks & Other Financial Institutions	75.79	70.30	72.80	77.65	85.08
Insurance and pension funding	23.98	24.20	25.17	26.19	27.25
Activities Auxiliary to Financial Intermediation	20.84	19.33	20.02	21.26	23.08
Real Estate, Renting and Business Activities	285.07	283.80	297.19	308.11	323.70
Owner Occupied Dwellings	126.47	128.13	132.68	139.38	146.43

INDUSTRIES	2011	2012 Prel	2013 Prel	2014 Prel	2015 Est
Real estate activities	114.95	117.20	121.37	127.50	133.94
Renting of machinery and equipment	2.64	2.24	2.33	2.48	2.64
Computer and related activities	6.33	4.92	5.82	5.02	5.25
Business Services	34.69	31.32	35.00	33.75	35.45
Public Administration, Defence & Compulsory Social Security	163.19	166.25	196.13	228.47	246.00
Education	90.09	91.19	101.02	113.39	120.78
Public	60.43	61.10	66.71	77.55	83.49
Private	29.66	30.10	34.30	35.84	37.29
Health and Social Work	45.10	45.72	51.06	57.78	61.67
Public	33.97	34.22	37.37	43.44	46.74
Private	11.12	11.50	13.70	14.34	14.92
Other community, social &personal services	45.41	46.28	50.45	55.84	58.25
Activities of Private Households as Employers	5.55	5.29	5.76	5.18	5.39
Less FISIM	16.74	16.02	15.82	17.28	18.99
Gross Value Added at Basic Prices	1,662.01	1,677.02	1,810.40	1,980.15	2,144.00
GROWTH RATE	1.44	0.90	7.95	9.38	8.27
Taxes on products	303.75	299.17	315.29	354.72	345.10
Less Subsidies	-	-	-	-	
GDP at Market Prices	1,965.75	1,976.18	2,125.68	2,334.87	2,489.10
GROWTH RATE	5.14	0.53	7.57	9.84	6.61

**Table.VII. 10. St. Kitts and Nevis Gross Domestic Product by Economic Activity at Basic Constant Prices
2011–2015 (EC\$ mill)**

INDUSTRIES	2011	2012	2013	2014 Prel	2015 Est
Agriculture, Livestock and Forestry	13.83	13.14	14.75	14.09	12.93
Crops	8.26	8.04	9.58	8.12	6.79
Sugar	0.00	0.00	0.00	0.00	0.00
Other Crops	8.26	8.04	9.58	8.12	6.79
Livestock	5.23	4.75	4.82	5.61	5.78
Forestry	0.34	0.35	0.35	0.36	0.36
Fishing	9.18	7.70	7.43	7.36	7.64
Mining & Quarrying	1.39	1.41	2.28	2.91	2.98
Manufacturing	104.01	114.58	102.29	104.19	100.54
Sugar	0.00	0.00	0.00	0.00	0.00
Other	104.01	114.58	102.29	104.19	100.54
Electricity & Water	25.04	23.49	23.02	23.37	23.19
Electricity	15.74	15.42	15.12	15.20	15.67
Water	9.30	8.07	7.90	8.16	7.52
Construction	200.97	180.34	224.19	257.87	297.09
Wholesale & Retail Trade	103.75	107.67	113.09	121.18	137.22
Hotels & Restaurants	89.21	91.38	94.69	99.56	104.14
Hotels	86.70	88.86	92.09	96.78	101.22
Restaurants	2.51	2.51	2.60	2.78	2.92
Transport, Storage and Communications	205.19	200.96	210.25	228.45	249.58
Transport and Storage	104.63	101.33	110.66	125.78	143.78
Road	62.79	63.47	72.59	81.27	92.68
Sea	1.23	1.20	1.21	1.51	1.81
Air	0.61	0.67	0.68	0.72	0.76
Supporting and auxiliary transport activities	40.00	35.98	36.18	42.29	48.53
Communications	100.56	99.63	99.59	102.67	105.80
Financial Intermediation	155.07	154.56	157.82	165.10	176.60
Banks & Other Financial Institutions	107.87	108.34	110.54	116.17	125.40
Insurance and pension funding	24.25	24.27	24.87	25.49	26.13
Activities Auxiliary to Financial Intermediation	22.96	21.96	22.40	23.44	25.07
Real Estates, Renting and Business Activities	261.76	259.81	267.94	273.78	283.36
Owner Occupied Dwellings	116.70	118.23	120.63	124.85	129.22
Real estate activities	106.53	108.59	110.79	114.67	118.68
Renting of machinery and equipment	1.92	1.56	1.60	1.69	1.76
Computer and related activities	6.28	5.13	5.99	5.09	5.24
Business Services	30.33	26.28	28.94	27.49	28.45
Public Administration, Defence & Compulsory Social Security	145.25	147.98	159.19	165.63	172.13

Education	76.76	76.44	83.27	86.37	89.39
Public	53.79	54.38	58.50	60.87	63.26
Private	22.97	22.06	24.77	25.50	26.13
Health and Social Work	39.36	39.89	43.83	45.51	47.13
Public	30.24	30.46	32.77	34.10	35.43
Private	9.12	9.43	11.06	11.41	11.70
Other community, social & personal services	39.11	39.59	42.52	46.36	47.58
Private Households with Employed Persons	5.21	4.78	5.13	4.54	4.66
Less FISIM	30.59	31.66	30.82	33.15	35.90
GDP at Basic Prices, Constant	1,444.48	1,432.05	1,520.87	1,613.11	1,720.26
GROWTH RATE	(1.88)	(0.86)	6.20	6.07	6.64
Plus: Product Taxes less Subsidies	263.98	255.47	264.86	288.97	276.90
GDP in Market Prices	1,708.46	1,687.51	1,785.73	1,902.08	1,997.16
Growth Rate	1.70	(1.23)	5.82	6.52	5.00

Source: St. Kitts Nevis Statistics Department/ECCB



Rol-J Williams, and Neila Jones exchanges pleasantries moments after he emerged victorious at the 2014 Junior Ministers/ Commissioners of Tourism competition at the Caribbean Tourism Organization (CTO)'s State of the Industry Conference (SOTIC) 2014, in St. Thomas, US Virgin Islands. Neila Jones (left) was the 2013 Junior Minister/Commissioner of Tourism winner.

Chapter Eight

Education

The Education Department mission is to maximize resources and increase accountability in order to provide the residents of Nevis with a quality and relevant education system, built upon strategic planning, research and evaluation, education and training, and school community partnership.

The following table shows that there was a decrease in the number of students in the Preschools for school year 2014/2015 when compared to the school year 2013/2014. The data also revealed at the end of the school year 2014/2015 the total number of children enrolled in Nurseries were 150. This total is the same as that of the previous year.

Table VIII.1: General Information on Pre-schools and Nurseries in Nevis, 2010/11 – 2014/2015

Year	2010/ 2011	2011/ 2012	2012/ 2013	2013/ 2014	2014/ 2015
Private Preschool Centers	7	7	7	6	6
Government Preschool Centers	3	3	3	4	4
Total Supervisors for Public & Private Preschools	9	10	10	10	10
Total Auxiliary Staff for Public & Private Preschools	24	29	30	29	28
Supervisors/Auxiliary Staff for Nurseries					
Centre Based	12	14	15	15	15
Home Based	15	12	13	13	13
Total Children in Preschools	370	374	352	357	322
Total Children in Nurseries	139	150	136	150	150
Total Enrollment in Preschools and Nurseries	509	524	488	507	472

Secondary Schools

There are two public secondary schools, Charlestown Secondary and Gingerland Secondary, and one privately owned – Nevis International Secondary School.

Table VIII.2. Number of Public and Private Schools in Nevis, 2010/11 – 2014/15

	2010/2011	2011/2012	2012/2013	2013/2014	2014/2015
PRIMARY PUBLIC AND PRIVATE SCHOOL					
Public	7	7	7	7	7
Private	3	3	3	3	3
Total	10	10	10	10	10
SECONDARY PUBLIC AND PRIVATE SCHOOL					
Public	2	2	2	2	2
Private	1	1	1	1	1
Total	3	3	3	3	3

Source: Department of Education

Primary Schools

Statistics shows that among the primary schools on the island, there were 1,239 students and 131 teachers by the end of the school year 2013/2014. When comparing gender differences between the students for the said period, the female students have a 50.4% rate or (624) while the male were 49.6% or (615). The rate among the teachers was females with 93.9% (123) rate in comparison to the males with 6.1% (8). In the private primary schools there are no male teachers over the four year period under review.

Table VIII.3. Number of Students and Teachers in Public Primary School, in Nevis 2010/11 – 2013/14

Year	2010-2011		2011-2012		2012-2013		2013-2014	
Gender	Male	Female	Male	Female	Male	Female	Male	Female
Students	617	635	606	612	564	585	562	571
Teachers	19	111	21	110	13	93	8	103

Table VIII.4. Number of Students and Teachers in Private Primary School, in Nevis 2010/11 – 2013/14

Year	2010-2011		2011-2012		2012-2013		2013-2014	
Gender	Male	Female	Male	Female	Male	Female	Male	Female
Students	77	86	81	80	63	58	53	53
Teachers	0	17	0	18	0	18	0	20

In comparison to Primary Schools and Secondary Schools, there are more male students in the secondary schools with a 50.3% rate over the female with a 49.7% at the end of 2014. Over the five year period, there were approximately 25 to 35 students enrolled in the private secondary school. (See tables below)

Table VIII.5. Number of Students and Teachers in Public Secondary School, in Nevis 2010/11 – 2013/14

Year	2010-2011		2011-2012		2012-2013		2013-2014	
Gender	Male	Female	Male	Female	Male	Female	Male	Female
Students	479	545	484	557	456	567	517	511
Teachers	44	75	37	63	42	87	42	90

Table VIII.6. Number of Students and Teachers in Private Secondary School in Nevis, 2010/11 – 2013/14

Year	2010-2011		2011-2012		2012-2013		2013-2014	
Gender	Male	Female	Male	Female	Male	Female	Male	Female
Students	17	15	15	13	15	13	6	6
Teachers	2	9	2	7	2	7	2	7

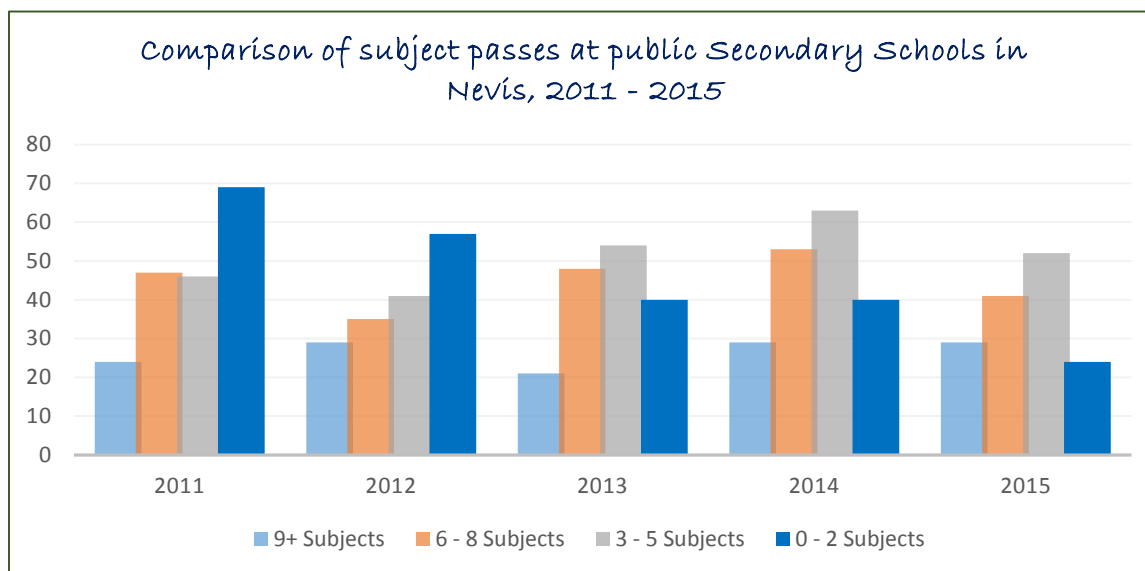
Source: Department of Education

The Caribbean Secondary Education Certificate (CSEC) continues to provide excellent testing standards for the high school students. This excellence is demonstrated by the performance of one student of the Charlestown Secondary School who passed 15 subjects with 10 Grade 1's therefore receiving top honours. The table below illustrates the number of CSEC subject passes for the students of the Charlestown and Gingerland Secondary Schools over the period 2011-2015. These figures also show there was fluctuation in the total passes during the period under review. There were 186 passes in 2011, 162 in 2012, 163 in 2013, 185 in 2014 and 146 in 2015. Further analysis of the results for the school year 2015 indicates that most students tend to pass in the range of 3-5 subjects.

Table VIII.7. CSEC Subject passes for Charlestown and Gingerland Secondary Schools, 2011- 2015

Subject Passes	2011	2012	2013	2014	2015
0 – 2	69	57	40	40	24
3 - 5	46	41	54	63	52
6 - 8	47	35	48	53	41
9+	24	29	21	29	29
TOTAL	186	162	163	185	146

Source: Department of Education



Based on the information that is presented, a large number of students obtained grade III, IV and V passes for the exams that were held in 2015. There was an overall increase of 34% in the number of students who wrote the 2015 exams when compared to the 2014 figures.

Table VIII.8: CAPE Grade Distribution at the Charlestown Sixth Form College in Nevis, 2011 - 2015

Number of Students					
Grade	2011	2012	2013	2014	2015
I	6	24	38	25	30
II	47	65	56	46	84
III	68	92	79	83	109
IV	125	118	101	95	125
V	150	139	116	102	131
VI	108	88	75	72	90
VII	30	11	13	15	19

NB: Grades I-V Passing Grades

Grades VI-VII Failing Grades

Table VII.9: Enrollment of Students at the Nevis Sixth Form College in Nevis, 2011- 2015

Year	Sixth B		Sixth A		Total	
	Girls	Boys	Girls	Boys	Girls	Boys
2011	51	35	38	11	89	46
2012	40	15	36	28	76	43
2013	49	28	26	10	75	38
2014	59	34	30	22	89	56
2015	50	26	37	29	87	55

Adult and Continuing Education

The Department of Education not only oversees the education of children, but also sustains the education of school leavers. The table below shows the adult education classes that are offered by the Education Department. It is further indicated that for the year 2015 there were a total of six adult education classes being offered by the Department.

Of the total number of persons who attended these classes for 2015, 26 were females and 8 were males. For the period 2012-2014, a large percentage of females sat the clothing and textile exams. Also it must be noted that for 2014, 6 females pursued the course of motor mechanic while no men attended these sessions.

Adult Education classes at the Education Department, Nevis 2012-2015

Year	Subject	Males	Females
2012	Mathematics	2	8
	Clothing & Textiles	0	15
Total		2	23
2013	Mathematics	1	4
	Clothing & Textiles	0	7
	Agriculture Science	0	5
	EDPM	1	6
Total		2	22
2014	Mathematics	0	5
	Clothing & Textiles	0	7
	Social Studies	0	0
	Agriculture Science	2	3
	Motor Mechanics	0	6
	Economics (CAPE)	2	3
	EDPM	1	4
Total		5	16
2015	Mathematics	1	5
	Sewing for beginners	0	7
	Social Studies	1	3
	EDPM	1	5
	Information Technology	2	3
	Economics	3	3
Total		8	26

Source: Department of Education



The Caribbean Development Bank (CDB) Water Enhancement that is currently underway promises to alleviate some of the water problems on the island. This has provided much needed employment directly and indirectly.

Chapter Nine

Employment

The main focus of the Labour Department is to ensure that businesses are complying with the laws and regulations relating to the protection of its workers. The table below reveals that the Construction sector showed a substantial decrease in average employment at the end of 2015 when compared to the 2014 figures. This downward movement continued to be reflected in the following industries for 2015; Agriculture, Baking, Commercial, Domestic, Financial, Hotel and Guest Houses, Manufacturing, NE Workers and Transportation. Over the five year period an average of 24, 747 employees were employed in the Selected Industries and Services.

Table IX. 1. Average Employees by Selected Industries and Services 2011 – 2015

Industries and Services	2011	2012	2013	2014	2015	Total
Agriculture	54.5	70.5	79.25	108.5	49	361.75
Baking	36	28.25	26.5	23.25	22.25	136.25
Civil Service	782	811	827.25	833.75	861	4115
Commercial	373	390.25	398.25	369.5	338	1869.5
Construction	424	376	449.75	540.5	392.5	2182.75
Domestic	147.5	162.5	146	155.75	132.25	744
Financial	244.5	205.5	227	231.5	213.25	1121.75
Hotel & Guest Houses	1023.5	1069.25	1056.75	1090.25	1078.5	5318.25
Manufacturing	65.5	59.5	46	49.25	41	261.25
NE Workers	365.5	719.5	760.5	775.75	755.25	3376.5
Restaurants	148	134.5	126.5	152.75	164.75	726.5
Services	481	483.75	256.75	535.25	571	2327.75
Statutory Corporations	280.5	259.5	496.75	268	276.25	1581
Telecommunications	167.5	55	28	40	45.5	336
Transportation	65	54.25	67.75	52.25	49.75	289
TOTAL	4,658	4,880	4,993	5,226	4,990	24,747

Source: Labour Department, Nevis

The following table illustrates the work permit applications that were submitted by sector for the years 2011-2015. For the years 2014 to 2015 there was an increase in the total number of work permit applications that were issued with 518 recorded in 2014 and 550 in 2015.

When one takes a closer look at the different sectors it is noted that the Construction sector contributed significantly to this increase in 2015. There were 116 applications in 2015 when compared to 58 in 2014. It further documented that for 2015, the Commercial and Services sectors showed a slight increase in the number of work permit applications of 25 and 157 respectively.

Table IX.2. Work Permit application by Sector 2011 – 2015

Sector	2011	2012	2013	2014	2015	Total
Agriculture	81	63	61	47	47	299
Baking	11	7	5	5	5	33
Nevis Island Administration	133	90	69	67	65	424
Domestic	34	33	30	12	4	113
Construction	184	130	87	58	116	575
Commercial	53	38	31	21	25	168
Financial	8	7	10	10	8	43
Hotel and Guest Houses	101	81	96	71	65	414
Manufacturing	34	27	7	14	6	88
Miscellaneous	0	0	0	0	0	0
Restaurants	56	53	53	47	45	254
Services	177	158	171	148	157	811
Statutory Corporation	11	9	9	6	5	40
Telecommunication	0	0	0	0	0	0
Transportation	12	10	9	12	2	45
TOTAL	895	706	638	518	550	3,307

Source: Department of Labour

Table IX.3 shows the number of work permit applications by nationality that was issued for the period 2013. Included in the total of 638, 322 applications from the Caricom/OECS Region, 240 were Guyanese nationals. 83 from the United States of America, 74 from Jamaica, and 48 from

India. It is notable that the annual figure provided takes into consideration a percentage of renewals.

Table IX.3. Work Permit application by Nationality, 2013

Region	Country	Male	Female	Total
Caricom/OECS	Antillian		1	1
	Anguilla			
	Barbados	1		1
	Dominica			
	Grenada			
	Guyana	162	78	240
	Jamaica	45	29	74
	Montserrat			
	St. Lucia			
	St. Vincent			
	Trinidad	2	4	6
Other Caribbean	Cuba	2		2
	Dominican Republic	16	21	37
	Haiti		1	1
	Surinam	1		1
	Belize			
	Bahamas	1	1	2
Canada	Canada	11	7	18
America	Ecuador	1		1
	Columbia	2		2
	Mexico/Caucasian	2	2	4
	Venezuela	1	3	4
	Honduras		1	1
United States	United States	53	30	83
Europe/CIS	Austria	1		1
	Chile/Peru	1		1
	Denmark			
	France	1		1

	Germany	4		4
	Greece	2	1	3
	Ireland			
	Norway	1		1
	Portugal	1		1
	Spain	2		2
	Sweden	1		1
	Switzerland		1	1
United Kingdom	United Kingdom	14	5	19
Africa	Egypt	7		7
	Gambian	1		1
	Kenya	1	3	4
	Nigeria	2	3	5
	South Africa			
Asia	Croatia/Singapore	1	1	2
	China	12	5	17
	India	39	9	48
	Indonesia	8	2	10
Pacific	Italy	1	3	4
	Filipinos	16	9	25
	New Zealand			
	Turkey			
	Malaysia/Thailand		2	2
Total		416	222	636

The data revealed that at the end of 2014, there was a total of 518 work permit applications submitted by nationality. A closer inspection of the tables revealed that 154 work permit applications were issued to persons of Guyanese nationality with 81 being males and 73 females. This was the highest for any nationality for that year. This was followed with 68 from United States and 52 from Jamaica for the year 2014.

Table IX.4. Work Permit application by Nationality, 2014

Region	Country	Male	Female	Total
Caricom/OECS	Anguilla			
	Barbados	1	1	2
	Dominica			
	Grenada			
	Guyana	81	73	154
	Jamaica	26	26	52
	Montserrat			
	St. Lucia			
	St. Vincent			
	Trinidad	5	1	6
Other Caribbean	Cuba			
	Dominican Republic	26	21	47
	Haiti		1	1
	Surinam	2	2	4
	Belize			
	Bahamas		1	1
Canada	Canada	11	5	16
America	Ecuador			
	Columbia	1	1	2
	Mexico/Caucasian		1	1
	Venezuela	3		3
	Honduras			
United States	United States	27	41	68
Europe/CIS	Austria	2		2
	Chile/Peru	1		1
	Denmark			

Table IX.4. Work Permit application by Nationality, 2014 con't

Region	Country	Male	Female	Total
	France	2		2
	Germany	4	1	5
Europe/CIS	Greece	1		1
	Ireland			
	Norway			
	Portugal	1		1
	Spain	2	1	3
	Sweden		1	1
	Switzerland	1	1	2
United Kingdom	United Kingdom	9	2	11
Africa	Egypt	4		4
	Gambian			
	Kenya	1	2	3
	Nigeria	2		2
	Saudi Arabia	1		1
	South Africa	1		1
	Syria	3		3
Asia	Croatia/Singapore	1	1	2
	China	31	4	35
	Jordon		1	1
	India	41	9	50
	Indonesia	7		7
	Nepal	1		1
Pacific	Argentina	1		1
	Filipinos	3	3	6
	Philippines	7	5	12
	Madrid	1		1
	Malaysia/Thailand	1	1	2
Total		312	206	518

When a comparison was made between 2014 and 2015 it was indicated there was a substantial increase in the issuance of work permits by nationalities. 2015 showed an ending figure of 550 an increase of 6.2% when compared to 2014. The majority of work permits continue to be issued to people of Guyanese descent with 130, Chinese with 114 and United States citizen with 66.

Table IX.5: Work Permit application by Nationality, 2015

Region	Country	Male	Female	Total
Caricom/OECS	Anguilla			
	Barbados		1	1
	Dominica			
	Grenada			
	Guyana	76	54	130
	Jamaica	19	27	46
	Montserrat			
	St. Lucia			
	St. Vincent			
	Trinidad			
Other Caribbean	Cuba	1	2	3
	Dominican Republic	28	25	53
	Haiti	1	1	2
	Surinam			
	Belize			
	Bahamas		1	1
Canada	Canada	11	2	13
America	Ecuador	1		1
	Columbia	1		1
	Mexico/Caucasian	1	3	4
	Venezuela			
	Honduras			
United States	United States	50	16	66
Europe/CIS	Austria		1	1
	Chile/Peru			
	Denmark			
	France		1	1

Table IX.5: Work Permit application by Nationality, 2015 con't

Region	Country	Male	Female	Total
	Germany	2		2
Europe/CIS	Greece	1		1
	Ireland			
	Norway			
	Portugal	1		1
	Spain	1	1	2
	Sweden			
	Switzerland	2	1	3
United Kingdom	United Kingdom	11	2	13
Africa	Egypt			
	Gambian			
	Kenya			
	Nigeria	1		1
	Saudi Arabia	1		1
	South Africa			
	Syria	1		1
Asia	Croatia/Singapore			
	China	85	29	114
	Jordon		1	1
	India	45	12	57
	Indonesia			
	Nepal			
Pacific	Argentina			
	Filipinos	9	7	16
	Philippines	7	4	11
	Madrid			
	Malaysia/Thailand	2	1	3
Total		358	192	550



Nevis's Department of Agriculture experimented with one half acre plot of cabbage production at its Prospect Agriculture Station. It was done in order to reduce the large importation of the produce and also as a means to revitalize the cabbage production on a large scale.

Chapter Ten

Agriculture Production, Trade

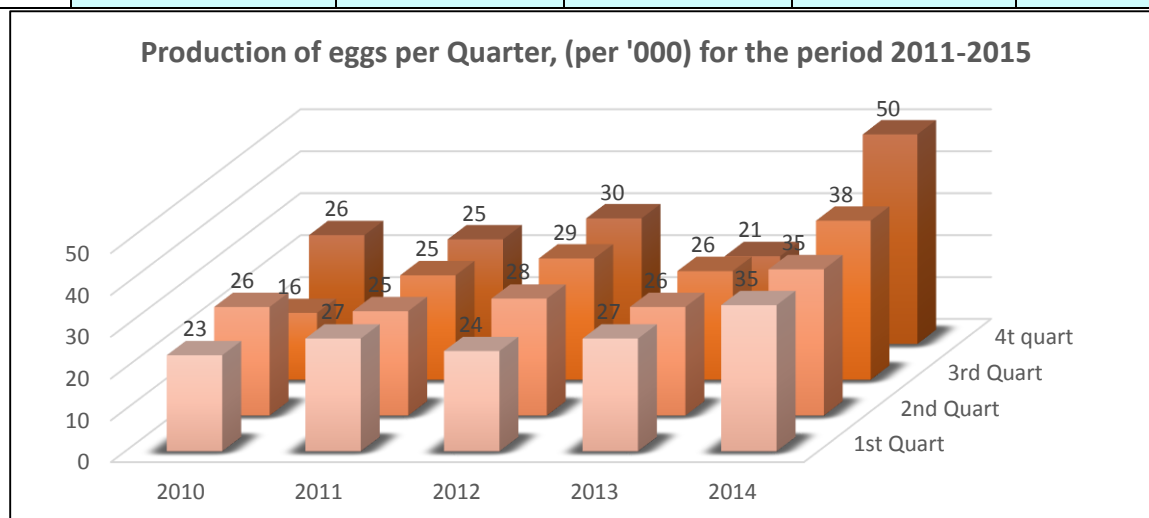
For decades, Agriculture played an important role in everyday living, and it has been associated with the production of essential food crops. Today, processing, marketing and distribution of crops and live stocks products are all acknowledged as part of the current agriculture.

Additionally, it is also one of the key factors which contributes to the island's GDP in a given year. Thus the Department of Agriculture and its subsidiaries, is the entity which generates such income from harvested crops, marketing, distribution and trading.

Egg Production

The below table displays quartile data for the past five years. The egg market is supplied by local individuals and by the end of 2015, the total yield of egg production was 157,173.01. This signaled a decrease of some 3% when compared to the yield of 157,173.01 in 2014.

Year	Production per 1 st Quarter	Production per 2nd Quarter	Production per 3rd Quarter	Production per 4th Quarter	Total per Year
2011	27,630	25,935	25,760	25,300	104,625
2012	24,570	28,483	29,624	30,937	113,615
2013	27,000	26,756	26,864	21,344	101,964
2014	35,660	35,623	38,770	50,540	160,593
2015	44,013	44,365	26,810	41,985	157,173
Total	158,873	161,162	147,828	170,106	637,970



Marketing Division

Table X.2. Throughput at the Marketing Division on an annual basis 2011 – 2015

Produce	2011	2012	2013	2014	2015
Arugula	0	10	0	0	2
Apricot	0	0	175	0	0
Avocado	20	140	255	60	835
Broccoli	5	0	0	65	0
Basil	15	50	155	145	8
Bora Beans	5	25	140	485	217
Breadfruit	60	450	495	525	564
Butternut Squash	1510	1945	5495	9140	4117.5
Cabbage	4700	5280	2275	400	1303.5
Cauliflower	10	0	0	0	0
Cantaloupe	2110	2670	8680	4350	1440
Carrots	1065	260	425	725	0
Cassava	155	510	705	785	402
Celery	0	0	0	0	26
Christophene	30	0	355	525	628.5
Cassava Meal	0	0	5	0	0
Cherry Tomato	0	165	105	465	943
Coconut	0	380	735	550	340
Cucumber	6525	9080	12700	17040	14201.5
Dasheen	0	0	55	185	287
Dragon Fruit	0	185	50	310	0
Eddoes	0	0	5	80	258
Eggplant	1170	670	2145	1930	2163
Fat Pork	0	0	0	0	3
Garlic	0	0	0	0	3
Ginger	85	115	125	215	150
Grapefruit	0	80	1890	505	140
Green Banana	1505	1740	2545	3510	3898
Green Papaya	780	735	470	600	758
Green Mango	0	0	0	0	12
Golden Apple	10	0	55	0	172
Guava	190	30	75	0	466
Guava Pulp	0	15	0	0	0
Ginip	0	0	300	0	14
Herbs and Thyme	810	780	475	225	52
Hot Peppers	20	15	195	25	5
Honey Dew Melon	1750	3430	5555	5390	3251

Produce	2011	2012	2013	2014	2015
Jelly	0	30	350	130	269
Jujubi	0	10	0	0	4
Lemon Grass	0	40	45	10	0
Lettuce	10	0	770	515	641
Limes	620	240	520	285	80.5
Mangoes Improved	630	1135	1410	3410	1425
Mango Unimproved	0	0	0	70	0
Manciport	0	0	0	0	754
Mint	0	5	5	0	8.5
Musk Melon	0	0	0	425	0
Okra	815	1485	4385	1155	1176.5
Onion	830	1310	4955	2845	14479
Oranges	0	35	40	50	44
Orange Pepper	0	0	0	0	28
Papaya Ripe	335	1150	405	100	1258.5
Passion Fruit	75	0	95	200	723
Peanut	0	20	0	0	0
Pigeon Peas	0	0	190	0	0
Pineapple	1740	2085	4020	2415	2756
Plantain	1480	2675	2585	2200	2064
Plum Tomato	0	0	0	0	95
Pomerac	0	0	15	0	0
Pumpkin	7055	14285	10580	6730	10773
Red Pepper	0	10	0	160	975
Ripe Banana	2575	8965	8060	15610	17794
Ripe Plantain	710	1710	3270	4445	6671
Roma Tomato	0	0	0	860	250
Rosemary	0	5	25	0	0
Purple Pepper	0	0	0	30	0
Purple Potato	0	0	0	0	38
Seasoning Pepper	325	145	1315	525	877
Sea Grapes	0	0	55	0	0
Silk Banana	115	720	485	265	852
Sorrel	1530	235	0	360	231
Sour Sop	5	30	80	50	1120
Star Apple	120	75	0	195	457
String Beans	680	740	1900	1555	25
Sugar Apple	30	0	45	130	0
Sugar Cane	0	45	15	15	55
Sweet Corn	125	1755	1605	235	42
Sweet Pepper	5890	3280	5160	2265	1356

Produce	2011	2012	2013	2014	2015
Sweet Potato	11290	11950	16640	10590	11952.5
Spinach	15	5	125	115	210
Tania	260	180	690	1660	2247
Tamarind	0	0	0	40	0
Thyme	0	200	255	100	16
Tomatoes	14955	19465	21715	22115	29574.5
Watermelon	10430	22305	35310	26955	32657.5
Wax Apple	70	10	10	35	115
White Potato	660	80	0	330	0
Yams	50	60	350	910	1357.5
Yellow Pepper	0	0	0	60	1021
Zucchini	110	140	655	70	60
Total	86,065	125,375	174,775	158,455	183,193

The above table shows the total per year of agricultural produce over a five year period, 2011-2015. At the end of 2015, the total produce was 183,193 a significant increase of 24,738 or some 16% when compared to the total produce for 2014.

Additionally, there are ten targeted crops that the Marketing Division imported to complement its local production for the past five years. They are Cabbage, Cantaloupe/Honey Dew Melon, Carrot, Corn, Onion, Pumpkin, Sweet Potato, Sweet Pepper, Tomato and Water Melon. The table below demonstrates the production as a percentage of imports.

While table X.2, displays the throughput at the Marketing Division for the period 2011 to 2015, table X.3 shows the ten targeted crops for the said period.

Table X.3: Top ten targeted Crops for the period 2011- 2015

Crop	Criteria	2011	2012	2013	2014	2015	Production as a % of Imports
Cabbage	Imports	54,621	107,079	115,063	135,886	43,200	1.16
	Produce	5,936	4,819	1,361	1,750	499	
Carrots	Imports	67,571	110,370	105,259	133,833	63,662	2.88
	Produce	5,374	2,857	20,729	10,400	1,833	
Cantaloupe/ Honeydew	Imports	21,247	37,113	20,519	114,580	84,240	67.44
	Produce	34,922	18,913	3,610	60,050	56,812	
Corn	Imports	8,211	19,730	21,364	31,364	14,764	48.67

	Produce	4,775	14,946	3,823	2,920	7,185	
Sweet Peppers	Imports	34,706	48,166	31,058	41,067	54,203	18.10
	Produce	22,588	16,945	8,537	27,020	9,810	
Pumpkin	Imports	4,427	3,266	2,459	0	0	100
	Produce	14,752	39,225	27,033	99,680	24,186	
Sweet Potato	Imports	0	0	0	0	2,345	514.12
	Produce	17,159	7,750	4,818	25,885	12,056	
Tomato	Imports	22,534	45,890	35,076	50,565	26,019	283.81
	Produce	71,055	43,455	46,406	142,830	73,845	
Watermelon	Imports	1,653	0	0	2,760	12,699	896.72
	Produce	103,334	69,348	70,239	234,830	113,874	
Onion	Imports	78,937	145,004	127,076	204,009	76,940	39.78
	Produce	2,072	19,277	12,133	52,258	30,608	

Extension Division

The Extension Division is responsible for providing technical assistance to commercial and backyard farmers, schools and farmer groups in all aspects of crop production, as well as to provide information through education activities. These activities will empower the farming families to adopt appropriate methods to improve their socio-economic well-being and contribution to nation building.

The division also provides weekly and monthly crop forecasting information and evaluates all aspects for concession.

Table X.3 will display the accumulative total of acreage farmed and estimated yield for the period under review. In 2015, the number of acres provided for farmers was 73.25 which yielded 832,845kg of produced. It is noted that although the amount of acres used by the farmers in 2015 was less than the amount used in 2014, the yield for that year was 93,966kgs more than in 2014.

The amount of acres used by government in 2015 was also less than the amount used in 2014 and the yield for 2015 was less than the yield for 2014.

Table X.4: Accumulative total of acreage farmed and estimated yield 2011- 2015

Institution	Criteria	2011	2012	2013	2014	2015
Farmers	Acres	60	52	52.44	74.41	73.25
	Yield (kg)	455,571	318,436	566,184	738,879	832,845
Government	Acres	46	38.82	22.4	65.57	37.02
	Yield (kg)	58,605	243,449	74,460	297,424	218,243
Total	Acres	106	90.82	74.84	739.98	110.27
	Yield (kg)	514,176	561,885	640,644	1,036,303	1,051,088

By the end of 2015, farmers had yielded 614,601kg of produce more than the government. They were provided with 37 acres more than government to harvest their crops.

It must be noted, in 2014, the number of acres provided for farmers increased by some 22 acres or some 42% when compared to 2013. This produced a yield of some 1,036,303kg of production.

The following tables, X.5, X.6, X.7, X.8 and X.9 illustrate the production analysis for targeted crops per quarter for the period, 2011 - 2015.

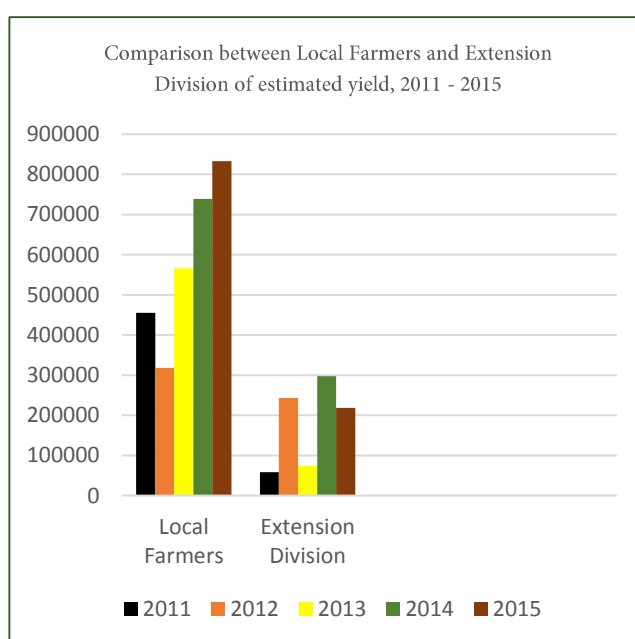
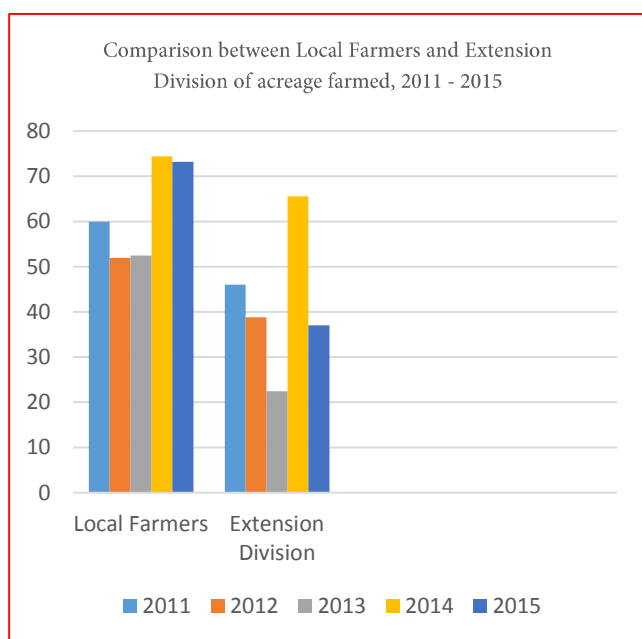


Table X.5: PRODUCTION ANALYSIS FOR 2011 OF TARGETED CROPS (KGS)

Crop	Estimated production 1 st quarter	Estimated production 2 nd quarter	Estimated production 3 rd quarter	Estimated Production 4 th Quarter	TOTAL ESTIMATED PRODUCTION
Cabbage	3,402	726	590	1,220	5,938
Cantaloupe/Honey Dew	9,592	12,678	10,659	1,985	34,914
Carrot	1,705	2,631	0	1,043	5,379
Corn	1,631	340	0	2,835	4,806
Onion	1,769	272	0	0	2,041
Pumpkin	1,633	8,505	2,800	0	12,938
Sweet pepper	3,583	6,895	4,817	7,276	22,571
Sweet potato	227	0	0	9,221	9,448
Tomato	18,598	16,329	6237	29,889	71,053
Watermelon	13,245	48,217	25,174	16743	103,379
TOTAL	55,385	96,593	50,277	70,212	272,467

Table X.6: PRODUCTION ANALYSIS FOR 2012 OF TARGETED CROPS (KGS)

Crops	Estimated production 1 st quarter	Estimated production 2 nd quarter	Estimated production 3 rd quarter	Estimated Production 4 th Quarter	TOTAL ESTIMATED PRODUCTION
Cabbage	1,438	3,211	1,701	375	6,725
Cantaloupe/Honey Dew	8,165	8,026	6,124	2722	25,037
Carrot	1,134	453	0	1270	2,857
Corn	4,809	8,437	0	750	13,996
Onion	7,711	4,535	0	600	12,846
Pumpkin	5,660	5,669	5,806	5,103	22,238
Sweet pepper	9,811	5,025	4,627	6,895	26,358
Sweet potato	5,737	1,378	8,709	0	15,824
Tomato	17,169	13,586	22,226	16,329	69,310
Watermelon	19,082	33,837	44,225	43,000	140,144
TOTAL	80,716	84,157	93,418	77,044	335,335

Table X.7: PRODUCTION ANALYSIS FOR 2013 OF TARGETED CROPS (KGS)

Crop	Estimated production 1 st quarter	Estimated production 2 nd quarter	Estimated production 3 rd quarter	Estimated Production 4 th Quarter	TOTAL ESTIMATED PRODUCTION
Cabbage	1043	227	0	91	1,361
Cantaloupe/Honey Dew	7665	6759	3175	3130	20,729
Carrot	272	363	907	2068	3,610
Corn	1161	2608	54	0	3,823
Onion	3515	2722	2948	0	9,185
Pumpkin	6169	7257	5987	7620	27,033
Sweet pepper	4264	1724	1415	1134	8,537
Sweet potato	3774	499	318	227	4,818
Tomato	29,143	1134	4223	11,906	46,406
Watermelon	17,373	22,453	28,372	2041	70,239
TOTAL	74,379	45,746	47,399	28,217	195,741

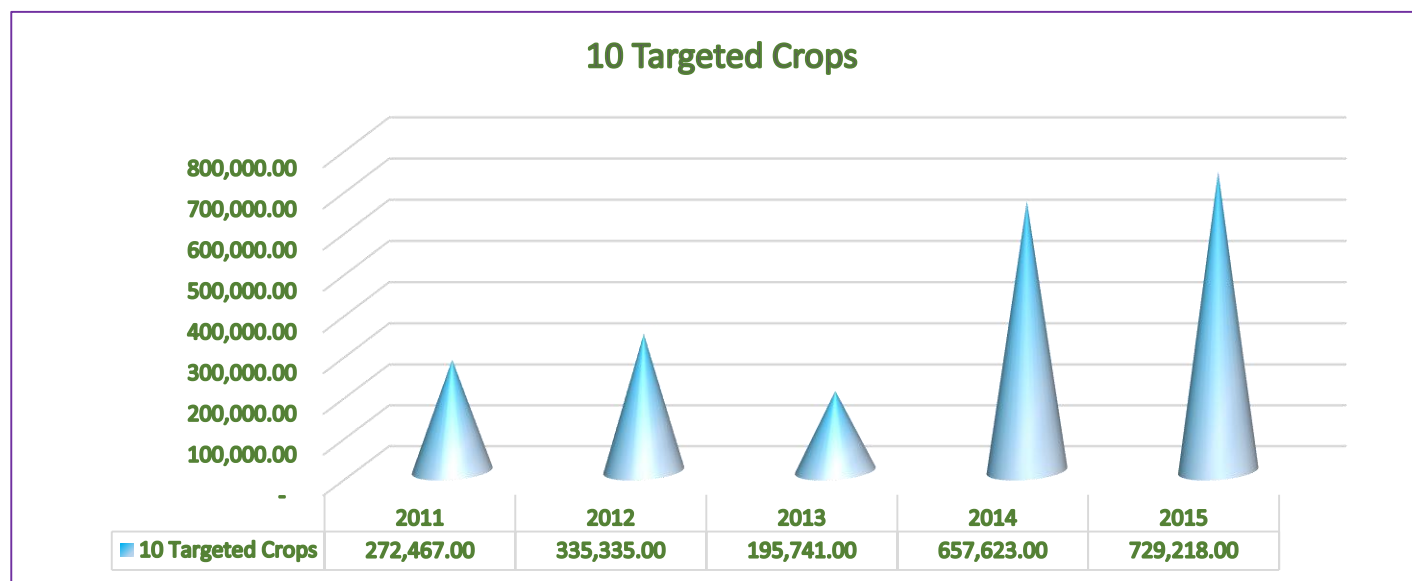
Table X.8: PRODUCTION ANALYSIS FOR 2014 OF TARGETED CROPS (KGS)

Crop	Estimated production 1 st quarter	Estimated production 2 nd quarter	Estimated production 3 rd quarter	Estimated Production 4 th Quarter	TOTAL ESTIMATED PRODUCTION
Cabbage	150	0	1,000	600	1,750
Cantaloupe/Honey Dew	18,300	3,500	24,800	13,450	60,050
Carrot	2,660	1,500	5,840	400	10,400
Corn	770	1,700	450	0	2,920
Onion	5,000	39,258	0	8,000	52,258
Pumpkin	53,920	33,520	10,560	1,680	99,680
Sweet pepper	5,100	7,520	11,000	3,400	27,020
Sweet potato	1,685	2,200	9,200	12,800	25,885
Tomato	55,500	23,580	16,500	47,250	142,830
Watermelon	75,250	74,830	46,300	38,450	234,830
TOTAL	218,335	187,608	125,650	126,030	657,623

Table X.9: PRODUCTION ANALYSIS FOR 2015 OF TARGETED CROPS (KGS)

Crop	Estimated production 1 st quarter	Estimated production 2 nd quarter	Estimated production 3 rd quarter	Estimated Production 4 th Quarter	TOTAL ESTIMATED PRODUCTION
Cabbage	1,100	0	0	0	1,100
Cantaloupe/Honey Dew	36,600	40,100	13,550	35,100	125,350
Carrot	1,600	300	0	2,140	4,040
Corn	1,200	440	0	14,200	15,840
Onion	480	0	7,500	59,500	67,480
Pumpkin	5,280	4,600	16,040	27,400	53,320
Sweet pepper	9,900	6,700	1,225	3,800	21,625
Sweet potato	4,200	5,000	9,300	8,080	26,580
Tomato	41,500	81,333	8,250	31,750	162,833
Watermelon	75,700	62,200	65,650	47,500	251,050
TOTAL	177,560	200,673	121,515	229,470	729,218

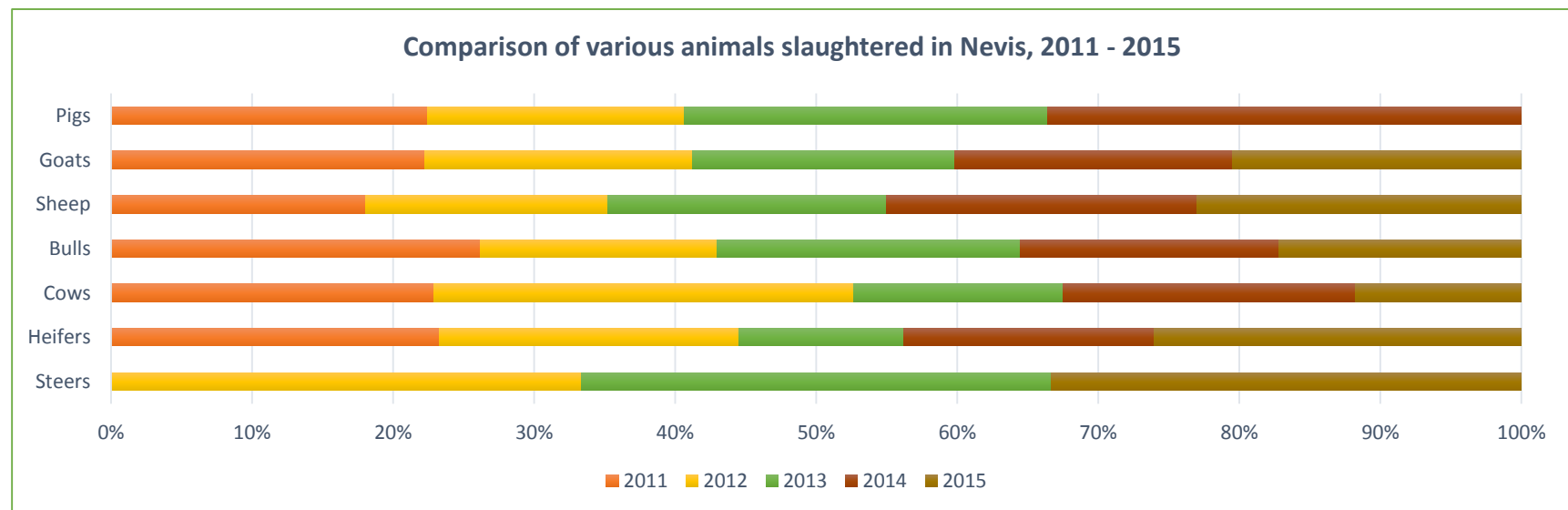
Source: Department of Agriculture



Animals Slaughter

There are seven (7) animals that are slaughtered at the Nevis' Abattoir for consumption as food for human use. These animals, Steers, Heifers, Cows, Bulls, Sheep, Goats and Pigs were slaughtered with pigs showing the highest amount in 2015 of 1,908. Between 2011 and 2015a, an overall total showed that 16,671 animals were slaughtered. There was a slight reduction of the amount of animals slaughtered in 2012 when compared to 2011 by 362. Over the last three years there was a steady increase in the number of animals slaughtered.

Animals	2011	2012	2013	2014	2015	Total
Steers	0	2	2	0	2	6
Heifers	34	31	17	26	38	146
Cows	74	96	48	67	38	323
Bulls	117	75	96	82	77	447
Sheep	1,144	1,090	1,253	1,398	1,461	6,346
Goats	623	532	520	553	573	2,801
Pigs	1,052	856	1,208	1,578	1,908	6,602
Overall Total	3,044	2,682	3,144	3,704	4,097	16,671



Department of Fisheries

The Department of Fisheries have the responsibility of providing a sustainable development of the catch, production, values, prices and farming systems and to also provide a source of revenue for the Nevis Island Administration by means of exporting seafood to other countries.

The reporting period, 2011 to 2015 saw that by the end of 2015, there was an availability of some 1,852,145 pounds of seafood for export. The seafood included lobster, conch and crab, as well as conch shell which contributed some 630 pounds.

Table X.10 provides an all-inclusive breakdown of the data collected by the Fisheries Department, and revealed that some 979,621 pounds of seafood was recorded by the end of 2015. This shows a sizeable increase of 848,415 when compared to 2014. The data also revealed that conch was the largest amount of seafood to be exported; followed by crab and then lobster.

Table X.11 outlines the various species of fishes that were hauled over the five year period 2011-2015. The Department of fisheries recorded an estimated overall total value of \$14,462,750 and total overall haul of 1,473,326 pounds of various fishes for the period 2011-2015.

Table X.11. Export of Seafood per pound on a yearly basis, 2011– 2015

Year	Lobster	Conch	Crab	Conch Shell	Total
2011	139	291,408	3,167	33	294,747
2012	214	110,111	1,275	14	111,614
2013	235	331,881	2,803	38	334,957
2014	3,542	122,839	4,485	340	131,206
2015	1,288	972,593	5,535	205	979,621
Total	5,418	1,828,832	17,265	630	1,852,145

Table X.12. Estimated Landings of species of fishes during the period 2011– 2015

SPECIES	2011	2012	2013	2014	2015
Snapper	34687	7656	7270	19221	29060
Grouper	38419	858	223	692	965
Grunt	23928	0	0	0	0
Old Wife	0	0	208	1016	3140
Parrot	30685	0	0	0	0
Goatfish	6004	0	0	0	0
Doctor Fish	40562	0	0	0	0
Squirrelfish	26850	0	0	0	0
Triggerfish	17720	0	0	0	0

Porgy	4079	0	0	0	0
Angel Fish	4448	0	0	0	0
Conch	225735	43310	81403	98017	78071
Lobster	61696	3435	5799	12046	12682
Gar	19992	3056	1401	4621	5824
Ballyhoo	51319	1745	2000	4716	13992
Jacks	13114	2497	236	4915	5427
Dolphin	6857	11007	6636	12046	38160
Wahoo	34810	3087	3255	5282	9747
Tuna/Mackerel	5976	591	0	0	0
Kingfish	1125	182	131	90	65
Skip Jack	3960	291	91	1801	1541
Lion Fish	0	0	19	393	221
Tuna	0	0	2308	1140	808
Bonito	216	30	0	0	0
Mackerel	584	24	42	145	28
Mullet	1499	318	0	0	0
Marlin	188	1151	1474	350	1785
Shark	2763	322	250	268	502
Barracuda	3822	847	365	822	508
Shell Fish	9865	213	384	1988	1674
Crab	852	1	23	52	0
Mixed Fish	0	13743	54306	93737	64190
Tarpon	0	603	0	0	12
Squid	0	102	0	0	0
Other	0	0	0	0	0
Turtle	0	0	350	1985	2710
Blue Runner	0	0	0	0	1220
Congo Eel	0	0	162	157	0
Sword Fish	0	0	0	0	298
Sail Fish	0	0	0	0	36
Total in (lbs)	671,755	95,069	168,336	265,500	272,666
Value in (EC\$)	6,581,985	940,165	1,598,045	2,564,223	2,778,336

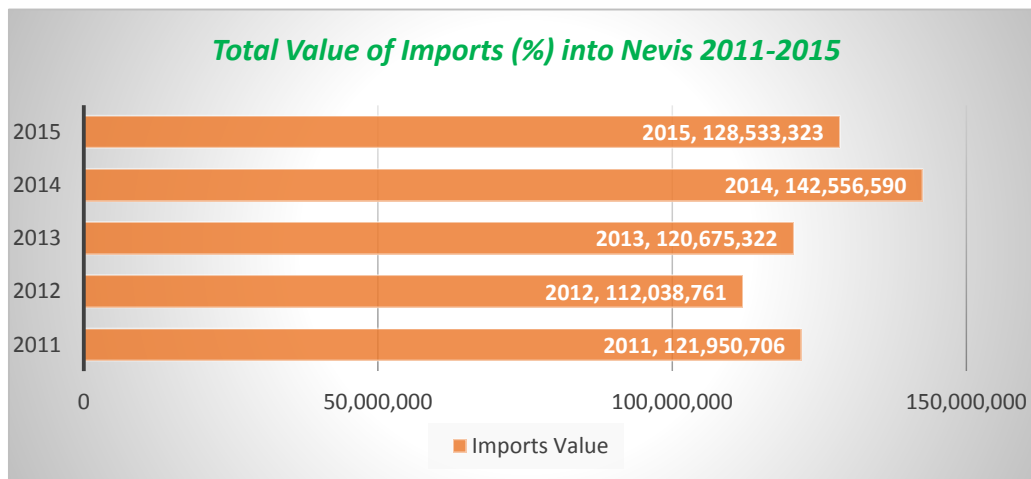
Source: Fisheries Department, Nevis

Trade

The total value of imports into the island of Nevis is recorded at the Customs and Excise Department. As per release in the below table, the figures show that by the end of 2015, the total revenue collected stood at EC\$128,533,323.45, a decrease of some EC\$14,023,278.50 when compared to the figure recorded by the end of 2014. The reporting period also shows that revenue collected changes from year to year. (The values include cost insurance, freight, government tax and other concessionary imports). (See below table)

Table X.13. Total Value of Imports into Nevis 2011 – 2015

Year	Total
2011	\$121,950,706.60
2012	\$112,038,761.00
2013	\$120,675,322.70
2014	\$142,556,590.19
2015	\$128,533,323.45



Rainfall

The data collected from the Nevis Meteorological Office allows decision makers to analyze how best to invest infrastructure projects given the projected changes in climate.

Rainfall data is also important for an agricultural community; as it is used to determine when certain crops should be planted or harvested and even which type of crop or variety of crop that is to be chosen for that particular season. In addition, the measurement of rainfall is used to understand if periods of drought conditions are in effect.

The below table reveals monthly figures of rainfall for the reporting period, 2011 to 2015. The highest figure of rainfall recorded was October, 2012 with 350.9mm; and the least amount was in May 2015 with 6.3mm.

Table X.9. Rainfall Data (mm) in Nevis, 2011– 2015

Month	2011	2012	2013	2014	2015
January	28.5	76	28.6	49.3	34.5
February	27.4	31	18	22.7	24.5
March	50.2	48.9	44.2	13.1	23.9
April	22.2	27.7	89.2	36.5	51.4
May	215.9	143.7	335	75.1	6.3
June	45.6	18.1	84.5	65.8	22.7
July	237.6	149.7	53.1	16.6	55.6
August	200.9	47.5	105.5	70.1	97.0
September	278.5	56.5	87.6	75.0	53.3
October	61.6	350.9	65.6	48.4	160.0
November	285.2	30.7	66.8	182.4	*
December	232.6	60.1	136.2	117.3	*

* Data not available



Ms. Merclyn Hughes, the first female Police Officer to reach the rank of Assistant Commissioner of Police in the Royal St. Christopher and Nevis Police Force. In addition, six new canine have been added to the force as a mean to bolster the capacity to detect devices that can be used to commit criminal acts.

Chapter Eleven

Crime and Protection

Table XI.1 Crime Statistics recorded between the period 2011 and 2015

Crime Category	2011	2012	2013	2014	2015	Total
Murder	6	3	10	5	8	32
Attempted Murder	0	0	1	2	0	3
Manslaughter	0	0	0	0	0	0
Wounding	17	7	19	9	8	60
Grievous Bodily Harm (Inflicting/Causing)	0	1	2	0	0	3
Wounding with intent (Firearm)	7	2	5	7	7	28
Rape	1	5	3	1	1	11
Unlawful Carnal knowledge	3	1	9	1	2	16
Defilement/Incest	2	0	0	0	0	2
Uttering of forged documents	2	0	3	0	3	8
Indecent Assault on Females	5	2	1	0	2	10
Assault with Intent to Rob	0	3	3	0	1	7
Robbery	8	2	3	2	1	16
Armed Robbery	10	23	15	27	13	88
House Breaking and Larceny (Residential)	64	70	91	43	32	300
House Breaking and Larceny (Commercial)	36	33	30	19	16	134
Housebreaking and Larceny (Other)	0	10	4	0	0	14
House Breaking with Intent (Residential)	0	17	10	10	4	41
House Breaking with Intent (Commercial)	0	2	3	3	3	11
House Breaking with Intent (Other)	13	0	0	0	0	13
Break & Enter Divine Place of Worship with intent to commit Felon	0	0	0	0	0	0
Burglary	14	21	34	10	6	85
Sacrilege	0	0	2	1	1	4
Shooting with Intent	2	0	1	2	3	8
Larceny	58	45	50	42	29	224
Unlawful Possession	1	0	1	0	0	2
Receiving Stolen Goods	0	4	1	2	0	7
Obtaining Credit by Fraud	0	1	0	0	0	1

Causing death by Careless/Reckless or Dangerous Driving	1	0	0	0	0	1
Arson	2	0	2	2	0	6
Possession of Controlled Drugs	86	70	43	36	29	264
Possession with Intent to Supply	5	9	18	11	6	49
Importing Controlled Drugs	0	0	0	0	0	0
Cultivating of Controlled Drugs	4	3	5	3	2	17
Unlawful Possession of Firearms/Explosives	0	3	4	3	0	10
Unlawful Possession of Ammunition	3	5	5	3	1	17
Smuggling of Firearm	0	0	0	3	0	3
Fraudulent Conversion	0	3	2	0	1	6
False Pretenses	0	0	0	7	0	7
Embezzlement/Breach of Trust	0	0	0	1	0	1
Malicious Damage	31	18	12	30	6	97
Possession of Firearm with intent to endanger life	0	2	0	0	0	2
Other crime, danger to life or bodily harm	0	3	0	0	0	3
Abduction/Kidnapping	0	0	0	0	1	1
Indecent Assault on Males	0	0	0	0	1	1
Total	381	368	392	285	187	1,613

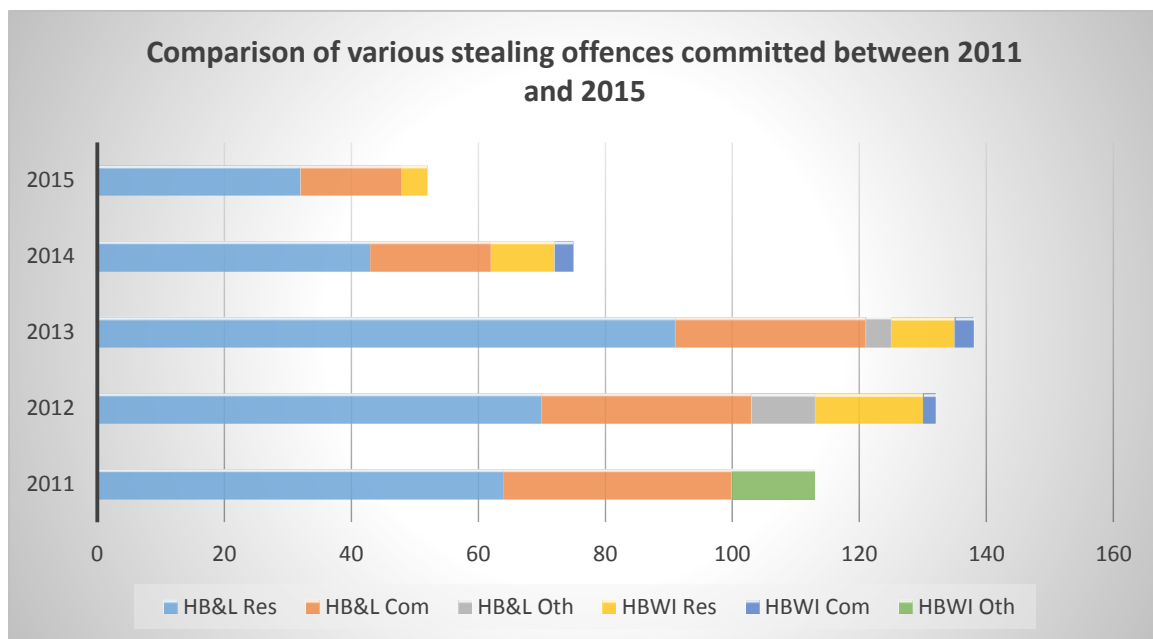
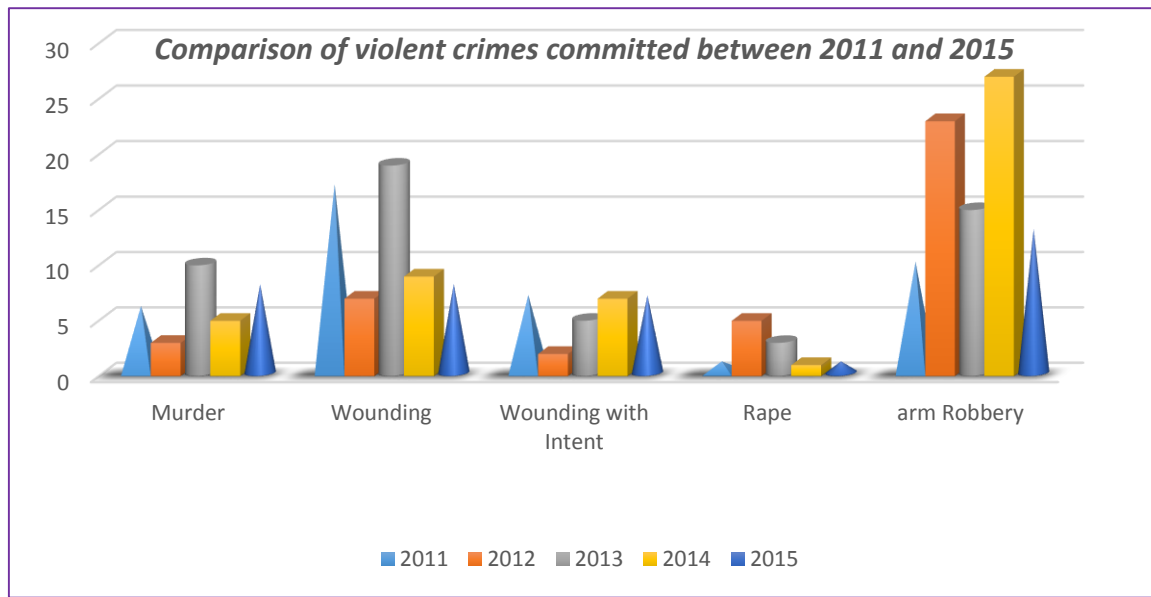
Between January 2011 and December 2015, a total 1,613 criminal offences were recorded by the Royal St. Christopher and Nevis Police Force, Nevis Division. The array of offences ranged from murder to receiving stolen goods.

The data produced is specific to certain offences and reflects the trends of crimes committed over the period under review. By the end of 2015, there was a significant decrease in the criminal activities, which showed some 35% when compared to the end of 2014.

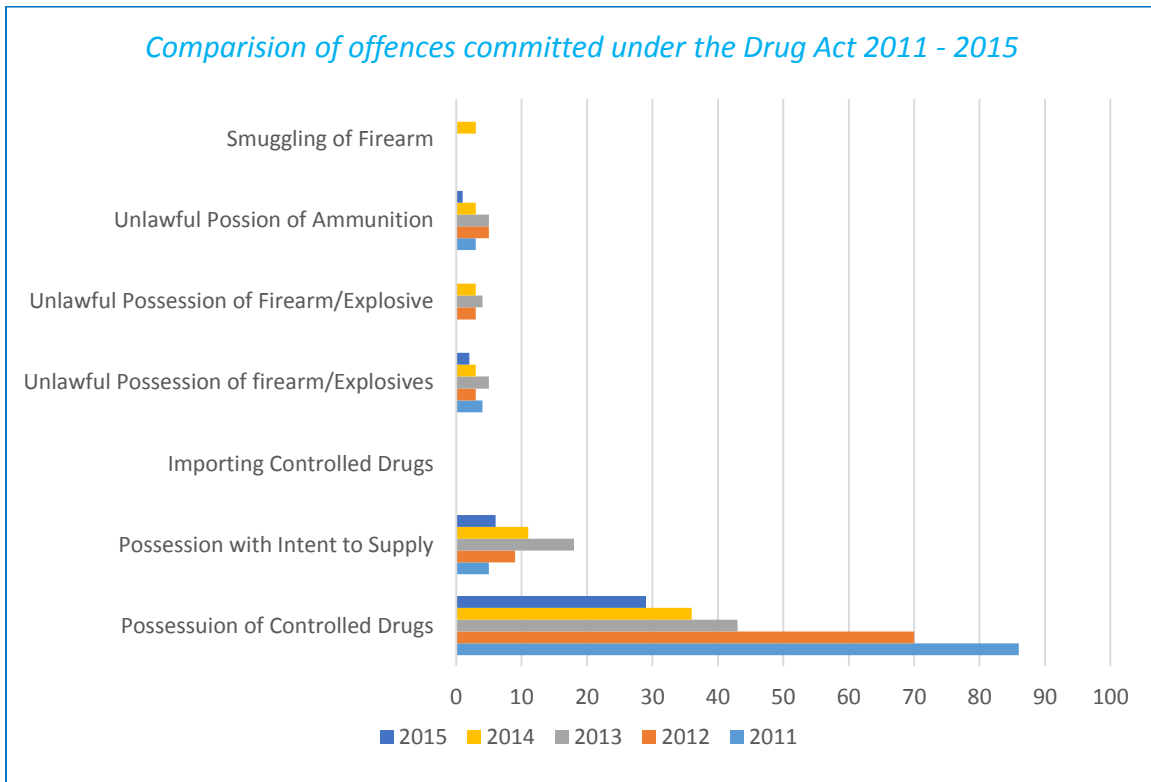
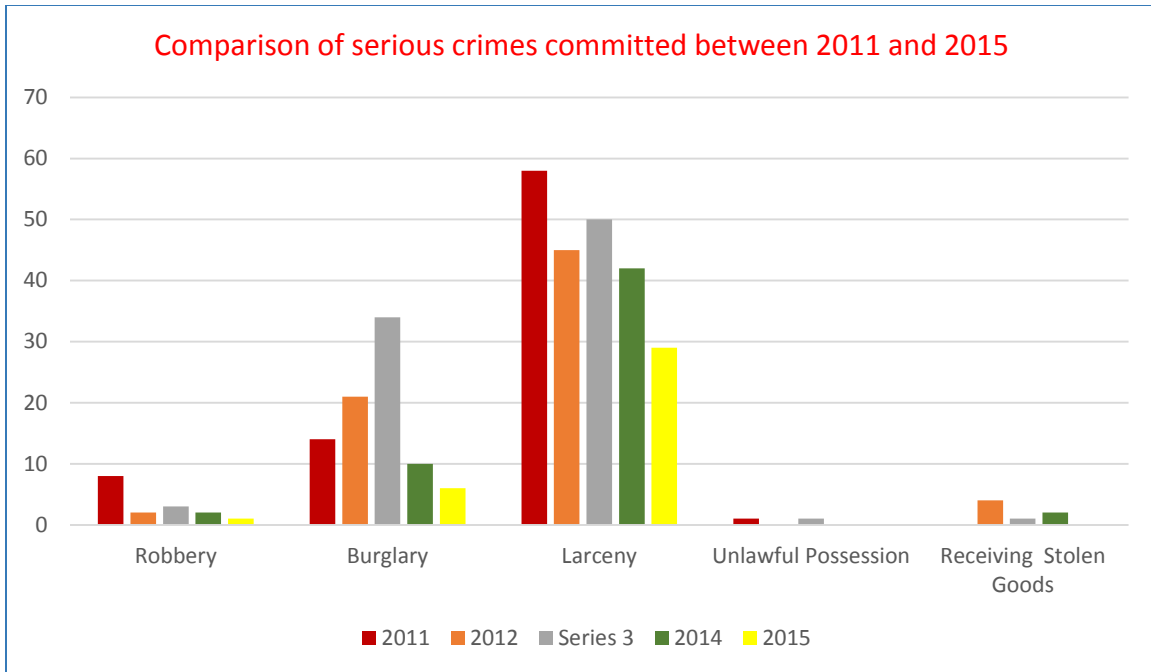
In 2015, there was a total of 187 criminal offences; while in 2014, there were 285. In 2013, there were 392 offences and demonstrated an increase of 7% when compared to 2012 with 368. However, when compared to 2014 and 2015, the offences decreased by some 28% in 2014 and 53% in 2015.

For the purpose of this publication, violent crimes cover the following offences: Murder, Wounding, Wounding with intent (Firearm), Rape and Arm Robbery. Thus the data will show that by the end of 2015, 8 murders were recorded with an increase of some 60% when compared to 2014 with a total of 5 murders. The period under review also demonstrates a fluctuation in the number of murders recorded.

Of a total of 1,613 reported and recorded offences, 2013 recorded the highest with some 392. The table below will display a decrease in armed robbery by the end of 2015 by some 14 incidents when compared to 2014 with 27. Between 2011 and 2015, the authorities recorded a total of 97 incidents of malicious damage. At the end of 2015, an 80% decrease was recorded for the said offence when compared to 2014.



HB&L Res - House Breaking & Larceny (Residence) HB&L Com (Commercial) HB&L Oth (Other)
HBWI Res - House Breaking with Intent (Residence)





The new fire tender which was recently commissioned and handed over to the Nevis Division of the St. Kitts–Nevis Fire and Rescue Services

Fire and Rescue

Over the reported period January 2011 to December 2015, the Fire and Rescue Services responded to a number of calls. The number of fires are displayed in the various categories on a yearly basis. See the following tables and accordingly, the year 2015, saw the Fire and Rescue Services responding to 125 calls, a reduction of 19 calls when compared to 2014. There were 144 calls in 2014; in 2013, 145; in 2012, 106 and in 2011 157. According to the data collected Grass/Bush fires resulted in the highest number of calls for the period 2011-2015, with a total of 248.

Table XI.2: Number of Fires by Category broken down by fire call in Nevis, 2011

Class- A		Class- B		Class- C		False	Motor Vehicle Accident	Motor Vehicle Fire	Motorcycle
House	11	Fuel	1	Electrical	9	18	3	6	0
Grass/Bush	82	Oil	0						
Stove	0								
Garbage	25								
Vehicle	0								
Other	2								
Total	120		1		9	18	3	6	0

Source: Fire Rescue Service

Table XI.3. Number of Fires by Category broken down by fire call in Nevis, 2012

Class- A		Class- B		Class- C		False	Motor Vehicle Accident	Motor Vehicle Fire	Motorcycle
House	10	Fuel	0	Electrical	2	15	0	2	0
Grass/Bush	41	Oil	0						
Stove	0								
Garbage	32								
Vehicle	3								
Copper	1								
Other	0								
Total	87		0		2	15	0	2	0

Source: Fire & Rescue Service, Nevis

Table XI.4. Number of Fires by Category broken down by fire call in Nevis, 2013

Class- A		Class- B		Class- C		False	Motor Vehicle Accident	Motor Vehicle Fire	Motorcycle
House	9	Kitchen	2	Electrical	3	20	3	4	0
Grass/Bush	47	Propane	1						
Tool Shed	4								
Garbage	50								
Tyres	2								
Copper	0								
Other	0								
Total	112		3		3	20	3	4	0

Source: Fire & Rescue Service, Nevis

Table XI.5. Number of Fires by Category broken down by fire call in Nevis, 2014

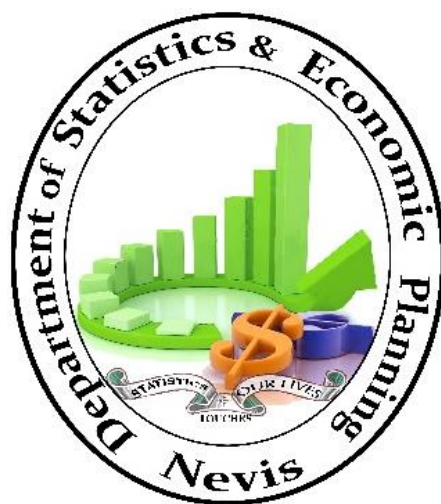
Class- A		Class- B		Class- C		False	Motor Vehicle Accident	Motor Vehicle Fire	Motorcycle
House	8	Kitchen	0	Electrical	7	23	2	0	0
Grass/Bush	45	Propane	0						
Tool Shed	1								
Garbage	51								
Lamp Pole	4								
Gov. Building	1								
Vehicle	1								
Smoke Disturbance	1								
Total	112		0		7	23	2	0	0

Source: Fire & Rescue Service, Nevis

Table XI.6. Number of Fires by Category broken down by fire call in Nevis, 2015

Class- A		Class- B		Class- C		False	Motor Vehicle Accident	Motor Vehicle Fire	Motorcycle
House	10	Kitchen	0	Electrical	7	13	0	0	0
Grass/Bush	33	Propane	0						
Tool Shed	0								
Garbage	53								
Lamp Pole	4								
Container	1								
Vehicle	4								
Smoke Disturbance	0								
Total	105		0		7	13	0	0	0

Source: Fire & Rescue Service, Nevis



**The Department of Statistics
Government Road
Charlestown
Nevis**