

**NEVIS**

# **STATISTICAL DIGEST 2014**



**THE  
DEPARTMENT OF STATISTICS  
&  
ECONOMIC PLANNING**  
*Ministry of Finance, Nevis Island Administration*

# The Nevis Statistical Digest 2014 (2009 – 2013)



Copyright©

The Department of Statistics and Economic Planning  
Corner of Main Street and Government Road  
Charlestown, Nevis

Email: [statsnevis@niagov.com](mailto:statsnevis@niagov.com)

Telephone: 1 (869) 469 5521 Ext 2168/2169

Fax: 1 (869) 469 0336

---

#### Disclaimer:

While all care has been taken to produce accurate forecasts based on available data, the Department of Statistics and Economic Planning does not accept any liability for any omission from such forecasts nor any loss or damage arising from the use of, or reliance on the information contained within this publication.

The most important thing about statistics is that it allow us to quantify things. Therefore our scientific age demands that we provide definitions, measurements and statistics in order to be taken seriously; even though most of the important things in life cannot be precisely defined or measured.

## *Mission:*

To prepare meaningful, timely, accurate and reliable data, for purpose of decision making and macro-economic policy formulation; in an effort to stimulate economic development efforts by attracting new industry and investment to Nevis.

## *Vision:*

- That the statistics we publish are of the highest quality possible,
- That the general public will be confident that the information that they provide us with are secure,
- That the importance of the department will be recognized.

## Table of Contents

	Page
FROM THE DIRECTOR'S DESK .....	v
FOREWORD .....	vi
EXPLANATORY NOTES .....	vii
Section I ..... <b>GENERAL INFORMATION ABOUT NEVIS</b> .....	9 - 21
Notable Local Events	
Historical Events	
Structure of Government	
Section II ..... <b>POPULATION AND VITAL STATISTICS</b> .....	22 - 29
Population Growth	
Birth, Death & Infant Mortality	
Marriages and Divorces	
Section III .... <b>INFRASTRUCTURE</b> .....	30 - 35
Housing	
Building Permits Issued	
Titles Issued and Deeds Registered	
Electricity Consumers and Electricity Production	
Water Consumption	
Section IV .... <b>TRANSPORTATION</b> .....	36 - 45
Registration and Licensing of Vehicles	
Drivers Written Test Taken	
Drivers Road Test	
Traffic Accidents Recorded	
<b>AIR TRANSPORTATION</b>	
Aircraft Movements	
Cargo Movements	
Passengers Movements	
<b>SEA TRANSPORTATION</b>	
Inter-Island Ferry Passengers Movements	
Cargo Movements via Sea Ports	
Section V .... <b>TOURISM</b> .....	46 - 52
Accommodation	
Stay Over Visitors	
Length of Stay	
Yacht and Cruise Calls/Passengers Arrivals	
Section VI .... <b>HEALTH AND SOCIAL</b> .....	53 - 60
Health	
Intentional and Unintentional Injuries	

	Registered Diabetics at Health Centers	
	Registered Hypertensive Patients at Health Centers	
	Dental Unit Trend of Services Rendered	
	<b>SOCIAL SERVICES</b>	
	Family Services	
	Gender Affairs	
Section VII ...	<b>FINANCE</b> .....	61 - 74
	NIA Revenue and Expenditure	
	Inland Revenue Departments	
	Customs Department	
	<b>THE FINANCIAL SERVICES</b>	
	<b>COMPANY REGISTRY</b>	
	SKB/NEV GDP by Economic Activity in Current & Constant Prices	
Section VIII ...	<b>EDUCATION</b> .....	75 - 79
	Number of Public & Private Schools	
	Number of Students and Teachers (public & private)	
	General Information on Pre-Schools and Nurseries	
	Number of CXC Subjects Passes for Secondary Schools Students	
	CAPE Grade Distribution at the Charlestown Secondary Sixth Form College	
	Enrollment at the Charlestown Secondary Sixth Form College	
Section IX ....	<b>EMPLOYMENT</b> .....	80 - 84
	Employees by Selected Industries and Services	
	Work Permit Application by Sector	
	Work Permit Application by Nationality, 2013	
Section X ....	<b>AGRICULTURE PRODUCTION AND TRADE</b> .....	85 - 96
	Egg Production	
	Throughput at the Marketing Division	
	Production Analysis of Targeted Crops	
	Animals Slaughtered	
	<b>DEPARTMENT OF FISHERIES</b>	
	Export of Sea Foods	
	Estimated Landings of Species of Fishes	
	<b>TRADE</b>	
	Revenue collect on Imports	
	<b>RAINFALL</b>	
Section XI ....	<b>CRIME AND PROTECTION</b> .....	97 - 102
	Crimes Reported	
	Fire and Rescue Service	

## From the Director's Desk



I am pleased to release the “**Nevis Statistical Digest 2014**” for the period 2009 – 2013, on behalf of the Department of Statistics and Economic Planning of the Ministry of Finance.

Education or Information is the next important tool. Simply put, the more you know about something, the less intimidating or difficult it is to deal with. Of course, you may not have any interest whatsoever in statistics, but any fact facing us is not as important as our attitude towards it, for that determines our successes or failures.

The Department is charged with the collection and publication of statistics related to the economy, population and society of Nevis, and of such, it produces and publishes statistical information, that can be used for social and economic policy-making, as well as painting a portrait of the island as its population evolves from time to time.

It is our belief that the future of reporting statistical data relies on the ability of its users to use the opportunities provided to make informed decisions in a timely manner.

Therefore, our determination to retain and surpass our past performance demands that continuous staff training is imperative, and encourage greater teamwork to enhance productivity and accessibility.

On behalf of the Department of Statistics and Economic Planning, special thanks is extended to our private and public partners who collected, collated, disseminated, analyzed and forwarded the data used to assist in this year’s publication. We look forward to the continued harmonization between our department and the other departments of government and the private sector in the economy.

***Dorriel Tross-Phillip***

Director of Statistics

## Foreword:

Under the mantra “*Statistics Touches Our Lives*”, the newly designed publication, is a compilation of statistical data reflecting the socio-economic and demographic trends, particularly for various sectors of the economy of Nevis over a five year period – 2009 to 2013.

This publication presents data in 12 main areas along with tables and graphs showing all categories in each area. The areas include, Population and Vital Statistics; Infrastructure; Transportation; Health & Social; Finance; Tourism; Education; Employment; Trade; Agriculture and Crime & Safety.

As the Department faces many challenges in this technological driven society, its stakeholders are growing and diversifying. To this end, the publication is released in a continual effort to promote awareness and the means where by the use of a broader range of statistics could offer information for the developmental of new indicators and informed decision making.

Although concerns have increased over the political instability of the island and the fallout of the global recession, the data which was collectively generated, will show trends of slight improvement within the economy. By the end of 2013, the current revenue stood at over EC \$121 million, an increase of some 34% when compared to the current revenue at the end of 2009. Besides the continual growth in registration of new companies, the Financial Services sector also impacted the economy with a 7.82% increase over the period under review.

It is important to note that the Inland Revenue Department continues to be vigorous in the collection of taxes due and payable. At the end of 2013 Value Added Tax collected increased by some 5.85% or \$856,756.31 when compared to the end of 2012. The Ministry

Except where other copyright is indicated, articles in this publication may be freely reproduced with acknowledgement from the Source. The Department welcomes your questions and or comments which can be sent to:

The Director:  
Department of Statistics and Economic Planning  
Corner of Main Street and Government Road  
Charlestown, Nevis

## Explanatory Notes

### I. The Digest:

The digest comprises of 11 sections, which can be considered as statistical indicators of the economy. These indicators are population, infrastructure, health, education, tourism, agriculture, finance and law and order and safety.

### II. Reporting Period:

Most of these tables cover the period 2009 – 2013.

### III. Data Source:

The data used in this publication was obtained mainly from administrative records of public and private sector agencies.

### IV. Rounding:

In some instances, data is rounded up/down to one or two decimal places.

### V. Symbols and Abbreviations

%	-	Percentage
mm	-	Millimeter
-	-	Nil or Negligible
in	-	Inches
km	-	Kilometer
/	-	(between two consecutive years) indicates a Financial Year or School Year
Con.	-	Container
Brk.	-	Break
TEU	-	Twenty Equivalent Units (containers are 20ft or 40ft)
GDP	-	Gross Domestic Product
GNI	-	Gross National Income
FOB	-	Freight on Board



NBCO	-	Nevis Business Ordinance
LLC	-	Limited Liability Company
Lbs	-	Pounds
Kg	-	Kilograms
Mw\h		Milliwatt per hour

## Section I



### **G**eneral **I**nformation

∞ General Information about Nevis

∞ Notable Local Events

∞ Historical Events

∞ Structure of Government

## General Information about Nevis

Nevis, a 36 square miles jewel lies near the top of the Lesser Antilles archipelago. Given the alias, ‘Queen of the Caribees’ in 1671, the island is accepted for its small, sombrero shape like statue. Its charm and tranquility will take you back in time when things were simpler, life more peaceful and stress was just a word. This gem intertwines as part of the Federation of St. Christopher and Nevis and has natural vegetation that is unparalleled.

### **Area:**

Nevis is 36 square miles (93 square kilometers). The island is 7 miles (11.2 km) long by 6 miles (9.6 km) wide.

### **Location:**

It is located about 200 miles south of Puerto Rico or approximately 17° North Latitude, and just west of Anguilla, approximately 62° West Longitude.

### **Geographical Division (Parishes)**

The island of Nevis is geographically divided into five parishes: St. Paul’s, St. Thomas’, St. James, St. Georges, and St. Johns.

### **Highest Point:**

Nevis is conical in shape with a volcanic peak known as Nevis Peak. It is the highest point on the island at a height of 3,232 ft.

### **Capital:**

The island’s capital is Charlestown.

### **Airport:**

Nevis’ airport is named Vance W Amory International Airport (formerly Newcastle Airport). It is situated in the St. James Parish and takes approximately 10 – 15 minutes to arrive in to Charlestown.

### **Religion:**

One of the most important elements of the people of Nevis, is their religious beliefs which is traditionally Christianity. As a people who is linked to their past, the predominance of Christian

belief has been diversely affected with the increase of several denominations into the society. Traditionally, there are Anglican, Roman Catholic, Methodist, Baptist and Wesleyan Holiness. Later, Church of God, Brethren, Evangelical, Pentecostal, Seventh Day Adventist and Jehovah's Witness. From about the mid 1990's, with the influx of immigrants from other Caribbean countries, their nationals practice on a small scale their religious beliefs in Hindu, Bahai and Muslim.

**Banks:**

The banking institutions on the island are: the Nevis Cooperative Credit Union, RBTT Bank, the Bank of Nova Scotia, the Bank of Nevis, First Caribbean International Bank, The Development Bank of St. Kitts and Nevis and The St. Kitts Nevis & Anguilla National Bank. There are two local banks, Bank of Nevis which has an international banking section and the St. Kitts Nevis & Anguilla National Bank.

**Currency:**

The official currency is the Eastern Caribbean Dollar. Foreign currency is convertible at commercial banks at the prevailing rate of exchange.

**Air Services:**

The main aircraft carriers are: Seabourne, Winair and Cape Air Airlines. FEDEX and DHL cargo airlines provide daily services.

**Sea Services:**

The main sea transports are: motor vessels Caribe Queen, Caribe Breeze, Caribe Surf, Mark Twain, Sea Bridge, Sea Hustler and Lady Mignone.

**Hospital:**

The only hospital on the island is the Alexandra Hospital and is located on Government Road, Charlestown.

**Police & Fire Services:**

There are four (4) Police Stations and two (2) Fire Stations on the island. Of the two fire stations, the main one is adjacent to the Charlestown Police Station and the other one is located at the

Vance Amory International Airport in Newcastle. The other police stations are Cotton Ground, New Castle and Gingerland.

## **Notable Local Events:**

### **Tourism Week:**

Mid February

### **Nevis St. Kitts Swim:**

1st Sunday in March

(Participants swim across 2.5 miles of sea water known as the Narrows between Nevis and St. Kitts)

### **Horse Racing:**

Most Public Holidays

(The race track has no stopping gates and the track is not manicure, but there is no other race course in the world which has a backdrop of blue sea and a dormant volcano)

### **Drag Racing:**

Most Public Holidays

(Drag racers from across the Leeward Islands participate in most of the meets. The drag race strip is located in the St. James' Parish.)

### **Inter-Primary Athletics Championship**

Early April

(Students of primary age compete on a yearly basis for track supremacy)

### **St. Kitts and Nevis Sailing Regatta**

May – June

### **Culturama**

July – August

(Nevis' Premier Cultural Festival. It is celebrated annually over the last weekend of July – August.)

### **Nevis Marathon & Running Festival**

September

(Held on a testing course that has an imaginative combination of challenging hills and flat terrains, providing an opportunity for speed.)

### **Oualie Beach Fishing Tournament:**

October

(Approximately 30 boats with fishermen from across the Leeward Islands compete on an annual basis for the largest catch)

### **Nevis International Triathlon:**

November

(Flagship Sporting Event which attracts persons from across the globe.

## **Historical Events:**

- 1493: Sighted and named by Christopher Columbus on his second voyage.
- 1834: Emancipation. (Abolition Act 1833 end slavery in the British Empire on 1<sup>st</sup> August.
- 1861: First Nevis postage stamp issued.
- 1899: The hospital was destroyed in a hurricane. It was located on Old Hospital Road.
- 1906: The Queen's House, once residence of the Governor was transformed into the hospital and named Alexandra Hospital after Queen Alexandra.
- 1921: The First Secondary School, (Charlestown Secondary) was opened.
- 1956: The Federal Colony of the Leeward Islands was dissolved and St. Kitts, Nevis and Anguilla became a separate colony.
  - Newcastle Airport opened.
- 1958: The colony of St. Kitts, Nevis and Anguilla entered the West Indies Federation as a single unit.
- 1959: M.V. Christena began its ferry service between Nevis and St. Kitts. It was 160 ft. in length and owned and operated by the Government.
- 1961: Nevisians, led by Eugene Walwyn, sought secession from St. Kitts.
- 1967: St. Kitts and Nevis attained Associated Statehood with Britain.

The new Constitution changed the status of St. Kitts-Nevis-Anguilla from Colony to Associated Statehood; however, the rebellion of Anguilla kept her from being part of the new State.

- The new Constitution provided for the Nevis Local Council.
- 1970: M. V. Christena sank off Nag's Head, St. Kitts while on its journey to Nevis. Approximately 240 passengers most of whom were Nevisians, perished.
  - A group of Nevisians formed the Nevis Reformation Party (NRP) with Simeon Daniel, a Lawyer by profession as the first President.
  - The Nevis Island Administration Building was constructed.
- 1974: The Nevis Dramatic and Cultural Society founded CULTURAMA, a festival dedicated to preserving the culture-music, dance, crafts and cuisine of Nevis.
- 1979: Introduction to Caribbean Examination Council (CXC) proficiency examinations for secondary students.
- 1980: The MV Caribe Queen went into service replacing the MV Liamuiga which was wrecked in St. Kitts by tropical storm David in August 1979.
  - February 19: Following the General Elections, the Nevis Reformation Party formed a coalition with the People's Action Movement. Simeon Daniel was given the portfolio as Minister of Finance.
- 1983: St. Kitts and Nevis attained political independence from Great Britain on September 19.
  - Princess Margaret unveiled the dedication plaque as part of the Independence Celebration.
  - Alexander Hamilton House was renovated to house the Nevis Island Assembly.
  - Mr. Simeon Daniel became the first Premier in Nevis.
  - Mr. Spencer Byron was named the first President of the Nevis Island Assembly following the attainment of Independence.
  - The Nevis Island Administration built the Sixth Form College next to Charlestown Secondary (CSS).
  - Mr. Herman Liburd became Speaker of the National Assembly.
  - Mr. Weston Parris was appointed the first Deputy Governor General for Nevis.
- 1984: The Education Department changed the primary schools in Charlestown from segregated boys and girls schools to a co-educational platform.
- 1985: Queen Elizabeth II unveiled a plaque at the Power Station in Prospect.
  - SKANTEL replaced Cable and Wireless as the telecommunication provider.
- 1987: First post-independence (Local Island Assembly) elections held in December.
- 1988: The Nevis Water Department laid new lines in Nevis, the service was metered and from this time consumers began paying for water.
  - The Voice of Nevis (Radio VON) went on the air, becoming the first privately owned radio station in the Federation.
- 1989: In the Federal Elections voters returned the PAM/NRP coalition to office for a third straight term.

- 1990: First vote in Parliament for the Secession bid for Nevis. Needed 4/5 but other members of the NRP did not support Simeon Daniel.
- 1991: The first 5-Star Hotel – Four Seasons Resort was opened with John Stauss as General Manager and Isadore Sharpe as President of the Four Season brand.
- 1992: Local elections held on June 1. First change of Government in the Local Assembly. The Concerned Citizens Movement (CCM) led by Vance Amory won 3 of the 5 seats, replacing the Nevis Reformation Party (NRP) led Nevis Island Administration. Hon. Simeon Daniel was leader of the party.
  - June 5: Weston Parris, the Deputy Governor General died in office.
- 1994: His Royal Highest, the Duke of Edinburgh visited the island.
  - The first local born to be ordained Priest of the St. Paul's Anglican Church, Ernest Flemming.
- 1995: SKANTEL provided the first internet service on Nevis to Hanver Trust Company.
  - Hurricane Luis and Marilyn came back to back and caused severe damages.
  - His Honour, Eustace John was sworn in as the 2<sup>nd</sup> Deputy Governor General of Nevis.
- 1996: The Nevis Island Administration dedicated Phase One of the Waterfront renovation project on September 19th.
- 1997: In June the Nevis Island Assembly led by the Concerned Citizens Movement held the first reading of the Secession Ordinance, which called for a vote for separation from St. Kitts.
  - Following the local election, CCM returned to office and saw the first woman – Honourable Jean Nisbett-Harris elected to office.
  - September - Paul Lawrence opened Lyn Jeffers private secondary school.
  - Following the death of Mr. Spencer Byron, first President of the Nevis Island Assembly, the Honourable Marjorie Morton was appointed as President.
- 1998: The Nevis Island Government finished the first phase of the airport expansion.
  - Hurricane George caused several damages.
  - There was a Referendum on Secession for Nevis that resulted in the "yes" vote failed by a narrow margin of 4%. (62% as opposed to 66%)
  - The Nevis Island Administration dedicated the deep-water port at Long Point on September 20th.
  - The first female Magistrate for District "C", Her Worship, Yasmin Clarke was appointed.
- 1999: Hurricane Lenny came from the west side and cause severe damages.
- 2000: Honourable Patrice D H Nisbett replaces Joseph Parry as the elected representative in Constituency #11.



- 2001: The Nevis Island Administration undertook the first phase of the road improvement project (Newcastle to Cotton Ground).
  - The Nevis Island Administration opened the Charlestown Waterfront Phase Two Project and unveiled the Christiana Disaster Monument.
- 2002: The Nevis Island Administration undertook the second phase of the road improvement project (Cotton Ground to Market Shop).
  - On September 19th the Newcastle Airport was renamed Vance W. Amory International Airport.
- 2003: The Nevis Island Administration renovated and upgraded the Alexandra Hospital.
- 2004: The newly built Combermere Primary School was officially opened and renamed the Violet O Jeffers-Nicholls Primary School on September 2nd.
  - Charlestown Post Office was officially reopened after months of renovation.
- 2005: The Prospect Primary School was renamed the Ivor Walters Primary School on 22nd September.
  - In October, saw the appointment of the First Resident Judge for Nevis, Her Ladyship, Justice Ianthea Leigertwood-Octave.
- 2006: Opening of the Flamboyant Nursing Home.
  - The Nevis Reformation Party was elected to government after 14 years in opposition.
- 2007: The Hon. Malcolm Guishard, Leader of the Opposition in the Federal Parliament died.
  - Honourable Mark Brantley was elected in a bi-election replacing Malcolm Guishard. He became Leader of Her Majesty Loyal Opposition in the National Assembly.
  - Charlestown Secondary School new wing was commissioned.
  - Official launch of the Sea Bridge ferry services at Cades Bay.
  - Official launch of the Golden Grove Housing Community in Brown Hill.
- 2008 Drilling for Geothermal energy commenced on Nevis
  - St. John's Primary School was commissioned
  - Official opening of Drag Race Strip in St. James Parish
  - Hurricane Omar caused severe damages and the closure of Four Season Hotel.
- 2009: St. Thomas Preschool in Jessups Village, was renamed the Inez France Preschool.
  - Nevis Netball Complex renamed after local netball pioneers Cicely Grell-Hull and Dora Stevens.
  - Official launch of the Harbour View Housing Development, in Ramsbury Site.
  - Preschoolers celebrate 25 years of Early Childhood Programme.
- 2010: Hon. Patrice Nisbett appointed as Attorney General in the Federal Government.
  - St. John's Primary School was renamed the Elizabeth Pemberton Primary School.

- Grove Park was renamed Elquemedo T. Willett Park.
  - Maddens Wind Farm in St. James Parish officially opened.
  - Implementation of Value Added Tax (VAT) in the Federation of St. Kitts and Nevis.
- 2011: Housing Project in Cherry Garden officially opened on 14th January.
  - Nevis Reformation Party (NRP) was elected for a second term on 11th July.
  - Placement of a Memorial Monument was unveiled at Bath Cemetery in remembrance of M V Christina Disaster on 5th August.
  - On November 22nd Cape Air Airline offers service to Nevis.
  - Runarko Shakur Morton, former Leeward Islands Cricketer died as a result of a motor vehicle accident in Trinidad on March 4<sup>th</sup>.
- 2012: The Nevis Performance Arts Center (NEPAC) officially opened on April 28<sup>th</sup>.
  - Honourable Simeon Daniel, Nevis' First Premier died on May 27<sup>th</sup>.
  - A landmark Election Petition Case was held at the Charlestown High Court, January 16 – 24<sup>th</sup>.
  - The first elected seat, Nevis 2, to be legally declared "Null and Void".
  - Official opening of the Brown Hill Pharmacy in the Brown Hill Health Center.
  - The Court of Appeal up held its decision regarding the petition case.
  - In November, the NRP Administration dissolved parliament without setting an election date.
- 2013: January 22, Nevis Local Election. Concerned Citizens Movement won 3 of 5 seats.
  - Tradewind Aviation started operation from San Juan, Puerto Rico to Nevis on November 2<sup>nd</sup>.
  - November 27<sup>th</sup>, Belle Vue International School was renamed Nevis Academy under new management.

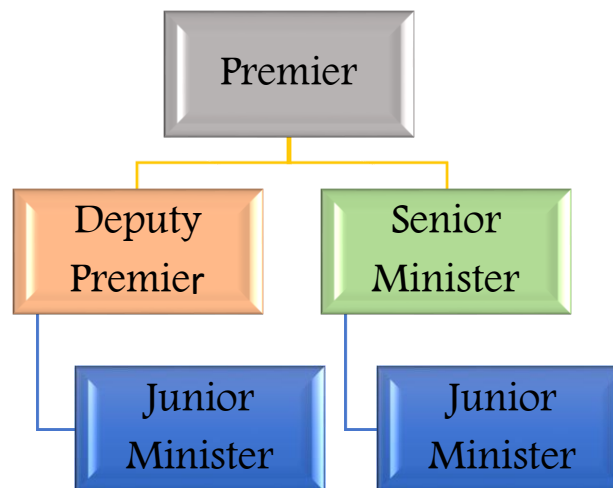
## Structure of the Nevis Island Government.

Modeled off the West-Minister System with a Constitution as the Supreme Law, the Federation of St. Christopher and Nevis has a democratically elected government with a unicameral structure of parliament. The uniqueness of the 1983 Constitution Order of St. Christopher and Nevis, gives credence for autonomy for the island of Nevis.

With 5 single-member constituencies and a majority rule voting system for a period of five years term of assembly, the constitution allows for a composition of the Nevis Island Assembly. Of such, there are eight members who comprise of individuals who are elected and or nominated.

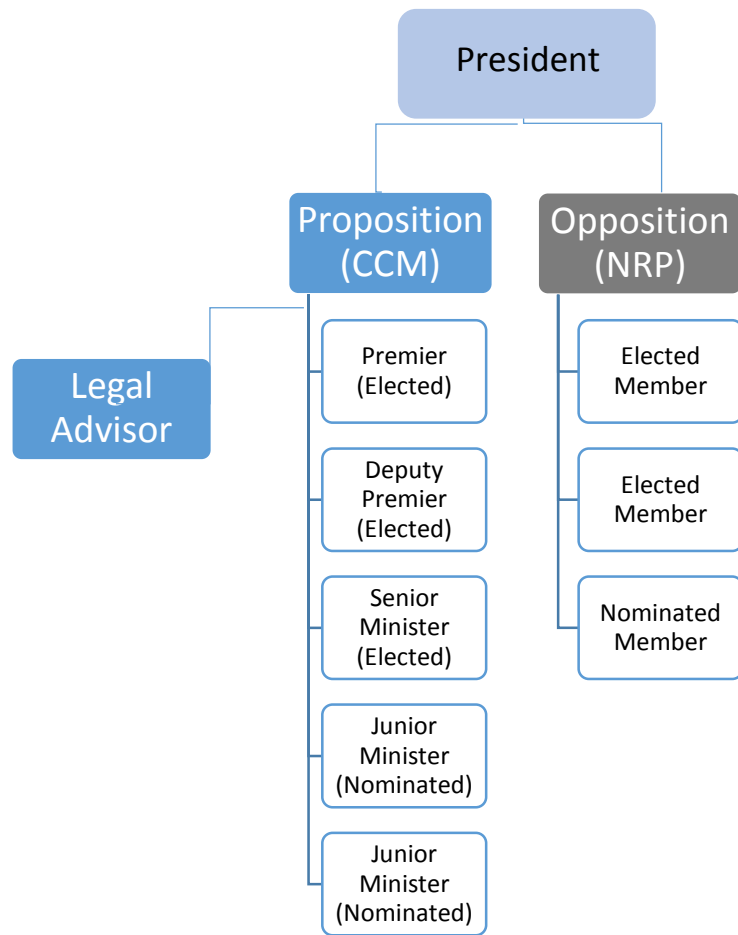
As a constitutional monarchy within the Commonwealth of Nations, the Federation recognizes Queen Elizabeth 11 (British Monarch) or her successor as the titular head of government. The Monarch is represented on the island of Nevis by a Deputy Governor General appointed by the Governor General (titular head) of the Federation who is constitutionally responsible for the government of both islands.

Since the realization of Independence in 1983, the island of Nevis is governed by an administrative division known as the Nevis Island Administration.



Organization chart displaying the composition of the Nevis Island Administration

Chart displaying the composition of the Nevis Island Assembly as at December 31, 2013



The Nevis Island Assembly has the authority to pass and or amend certain ordinances. When in session, the assembly is controlled by the President, who is presently, His Hon Mr. Farrell Smithen. He once held the position of Clerk of the Assembly from 1997 to 2003.

The Deputy Governor General is responsible for delivering the throne speech at the first sitting of the assembly following an election process. Presently, His Honour, Mr. Eustace John holds the position of Deputy Governor General, since his appointment in January 1995. The tables below show the five constituencies that are represented by five elected members at the end of 2013.

Name of Minister	Area Representing	Portfolios
Vance W. Amory	Elected representative for St. George Constituency, (Nevis 5)	Premier  Minister of Finance, Statistics & Economic Planning, Education & Library Services, Trade, Industry & Consumer Affairs, Labour and Human Resources
Mark A G Brantley	Elected representative for St. John Constituency, (Nevis 2)	Deputy Premier  Minister of Tourism, Health, Social Development, Youth & Sports, Culture, Gender Affairs, Community Development, Telecommunications & Information and Basic Needs Trust Fund.
Alexis Jeffers	Elected representative for St. James Constituency, (Nevis 4)	Senior Minister of Communications, Works, Public Utilities, Post, Physical Planning, Natural Resources & Environment, Agriculture, Land, Housing, Cooperatives and Fisheries.
U Troy Liburd	Nominated member of Government	Junior Minister in the Ministry of Communications, Works, Public Utilities, Natural Resources and Physical Planning with special responsibilities for Physical Planning, Public Utilities, Flood Water Control, Public Works, Environment and Post.
Hazel Brandy-Williams	Nominated member of Government	Junior Minister in the Ministry of Social Development, Sports, Youth, Community Development, and Gender Affairs with special responsibilities for Community Development, Gender Affairs, Youth & Sports, Social Development, the Licensing Unit and Import & Export Control and Basic Needs Trust Fund.

**Table I.1: Members of the Nevis Island Administration and their portfolios as at December 31, 2013**

**Table I.2: Members of the Opposition Party as at December 31, 2013**

Name	Area Representing	Position
Joseph W Parry	Elected representative for St. Thomas Constituency. (Nevis 3)	Leader of the Opposition
E Robelto Hector	Elected representative for St. Pauls Constituency. (Nevis 1)	Member of Parliament
Carlisle Powell	Nominated Member of Parliament	Member of Parliament

Since obtaining independence as a Federation, the island of Nevis has participated in 14 elections by the end of December 2013. These elections comprise of 7 General Elections and 7 Local Elections. The two political parties which contested the elections are the Concerned Citizen Movements (CCM) and the Nevis Reformation Party (NRP). (See the chart following).

General Election	Year	Party	Seats Won	Local Election	Year	Party	Seats Won
	1984	-	-		1987	CCM	1
		NRP	3			NRP	2
	1989	CCM	1		1992	CCM	3
		NRP	2			NRP	2
	1993	CCM	2		1997	CCM	3
		NRP	1			NRP	2
	1995	CCM	2		2001	CCM	4
		NRP	1			NRP	1
	2000	CCM	2		2006	CCM	2
		NRP	1			NRP	3
	2004	CCM	2		2011	CCM	2
		NRP	1			NRP	3
	2010	CCM	2		2013	CCM	3
		NRP	1			NRP	2

## Section II



## **P**opulation and **V**ital **S**tatistics

- ∂ Population Growth
- ∂ Population by Parish
- ∂ Population per Parish by Age
- ∂ Birth, Death & Infant Mortality Rate
- ∂ Teenage Pregnancies by Age
- ∂ Location where Marriages took place
- ∂ Divorces Granted

## Population Growth

One goal of this report is to present the most recent data for total, male, and female population collected by a national population census. In the majority of cases, national population censuses are carried out once every ten years, that is, every census round. A census round, as defined and implemented by the United Nations, encompasses ten years starting with the fifth year of a decade and ending in the fourth year of the next decade.

The latest available census figures total population (for 1970 – 2011) are given in this publication as 518,885. Of this total, a preliminary figure for 2011 which was the 13<sup>th</sup> census to be conducted, shows 11,415. The first census was conducted in 1871 with a total population count of 11,703. Following a ten year interval census conducted up to 1921, the population figures showed a decline between 1901 and 1921. There was no census conducted throughout 1921 to 1946, and when it resumed in 1946, the population accounted for 11,388, a decrease by some 181 when compared to 11,569 in 1921. Between 1970 and 1991, the population decreased significantly, a period when some residents of Nevis migrated to different countries.

**Table II.1: Nevis Inter-Censal Population Growth, 1871 - 2011**

Census Year	Population	Population Growth	Intercensal change (%)	Annual Average rate of change (%)
1871	11,703			
1881	11,864	161	1.4	0.14
1891	13,087	1223	10.3	1.03
1901	12,774	-313	-2.39	-0.24
1911	12,945	171	1.34	0.13
1921	11,569	-1376	-10.63	-1.06
1946	11,388	-181	-1.56	-0.16
1960	12,770	1382	12.14	1.21
1970	11,140	-1630	-12.76	-1.28
1980	9,428	-1712	-15.37	-1.54
1991	8,794	-634	-6.72	-0.67
2001	11,108	2314	26.31	2.63
2011P	11,415	307	2.76	0.28

*Source: Department of Statistics and Economic Planning, Nevis & Statistics Division, St. Kitts*



**Table II.2: Nevis Population by Parish at each Census, 1871 – 2011**

Year	St. Paul	St. John	St. George	St. Thomas	St. James	Total
1871	2,034	2,492	3,285	2,036	1,856	11,703
1881	1,532	2,506	3,683	2,101	2,042	11,864
1891	1,563	2,822	4,172	2,162	2,368	13,087
1901	1,383	2,537	4,186	1,977	2,691	12,774
1911	1,337	2,825	4,414	1,856	2,513	12,945
1921	1,158	2,531	4,052	1,636	2,192	11,569
1946	1,806	2,373	3,355	1,546	2,308	11,388
1960	1,530	3,106	3,092	2,390	2,652	12,770
1970	1,469	2,622	2,778	2,149	2,122	11,140
1980	1,243	2,224	2,295	1,975	1,691	9,428
1991	1,411	2,191	2,086	1,613	1,493	8,794
2001	1,790	2,901	2,564	2,047	1,806	11,108
2011P	1,665	3,555	2,376	1,858	1,961	11,415

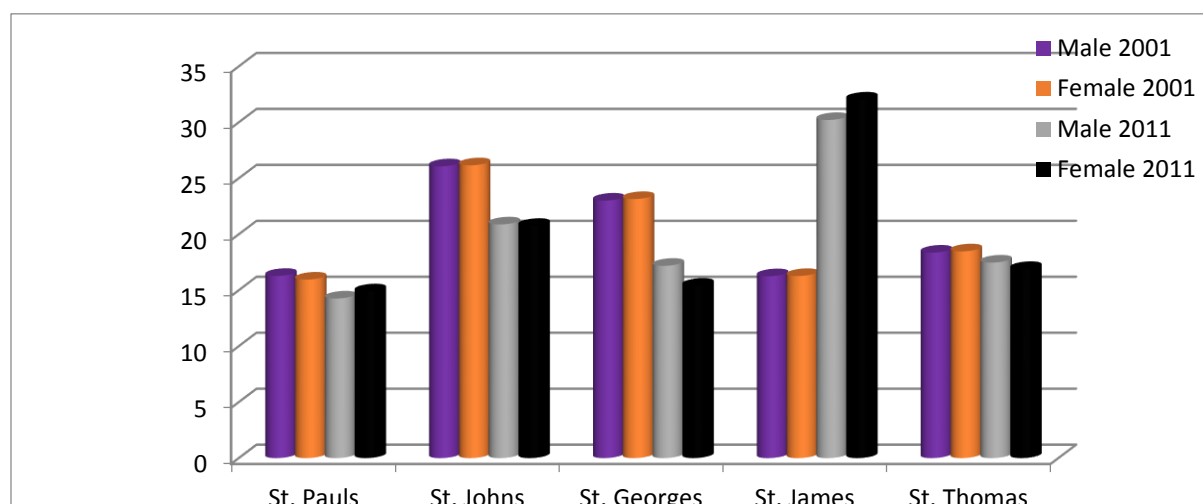
*Source: Department of Statistics and Economic Planning, Nevis & Statistics Division, St. Kitts*

Table II.3 displays a comparison between the population growth in 2001 and 2011. In the St. James' Parish growth was notable in 2011 when the total population increased by 1,749 as opposed to 1,806 in 2001. In 2011, preliminary findings showed that the population in St. Johns decreased by some 525 persons.

**TABLE II.3: Population by Parishes and Sex, 2001 - 2011**

Parish	2001			2011(P)		
	Male	Female	Both Sexes	Male	Female	Both Sexes
St. Paul	883	907	1,790	799	866	1,665
St. John	1,414	1,487	2,901	1,170	1,206	2,376
St. George	1,248	1,316	2,564	963	895	1,858
St. Thomas	997	1,050	2,047	979	982	1,961
St. James	881	925	1,806	1,693	1,862	3,555
<b>Total</b>	<b>5,423</b>	<b>5,685</b>	<b>11,108</b>	<b>5,604</b>	<b>5,811</b>	<b>11,415</b>

*Source: Department of Statistics and Economic Planning, Nevis & Statistics Division, St. Kitts*

**Graph II.1: Comparison between males and females in 2001 and 2011****Table II.4: Population by Age Group and Parish Nevis (Census 2001)**

Age Group	PARISHES					Total
	St Pauls	St Johns	St Georges	St Thomas	St James	
Both Sexes	1,790	2,901	2,564	2,047	1,806	11,108
0-4	172	237	234	199	122	964
5-9	148	268	242	190	176	1,024
10-14	146	293	241	197	138	1,015
15-19	144	229	200	150	135	858
20-24	151	220	171	129	114	785
25-29	165	216	193	172	132	878
30-34	164	244	226	186	149	969
35-39	113	256	224	181	155	929
40-44	142	235	183	157	161	878
45-49	115	155	145	117	111	643
50-54	85	114	85	64	68	416
55-59	57	89	72	50	73	341
60-64	46	70	78	63	54	311
65-69	44	86	62	63	42	297
70-74	32	69	79	49	59	288
75-79	22	56	47	36	49	210
80-84	21	43	51	26	30	171
85+	23	21	31	18	38	131

Source: Department of Statistics and Economic Planning, Nevis & Statistics Division, St. Kitts

## Birth Death & Infant Mortality

The number of death and birth is closely linked to changes in the population in any given year. Changes in the distribution of country's age groups have long lasting economic and social impact as the size of the population determines the demand for goods and services. The table below represents the most recent data for the period 2009 – 2012 on live births, deaths, and infant deaths recorded at the Registry of Births & Deaths. By the end of 2012, there were 126 live births recorded as compared to 159 in 2009; a decrease of 33 or 20.75%. Within the same years, 2009 saw 82 deaths, while in 2012, 83 were recorded.

**Table II.5: Nevis Live Births and Deaths, 2009 - 2012**

Year	Live Births			Deaths		
	Female	Male	Total	Female	Male	Total
2009	76	83	159	30	52	82
2010	61	63	124	43	48	91
2011	48	65	113	38	57	95
2012	63	63	126	44	39	83

Source: Ministry of Health, Nevis

Between 2009 and 2012, Crude Birth Rate declined from 12.9 to 10.95. 2010 accounted for 9.8 and 2011 was 8.6. Meanwhile, Crude Death Rate increases over the said period under review. It is recorded that the death rate increased from 6.6 in 2009 to 7.3 in 2012.

**Table II.6: Nevis Crude Birth and Death Rates, 2009 – 2012**

Year	Crude Birth Rate	Crude Death Rate
2009	12.9	6.6
2010	9.8	7.3
2011	8.6	7.5
2012	10.95	7.3

**Table II.7: Nevis Infant Mortality Rate, 2009 - 2012**

Year	2009	2010	2011	2012
Infant Deaths	5	2	0	2
% per 1000 Live Births	31.4	16.3	0	15.87

Source: Ministry of Health, Nevis

It must be noted that over that said period, Infant Mortality Rate has drastically declined from 31.4% per thousand live births, to 15.87% per thousand live births.

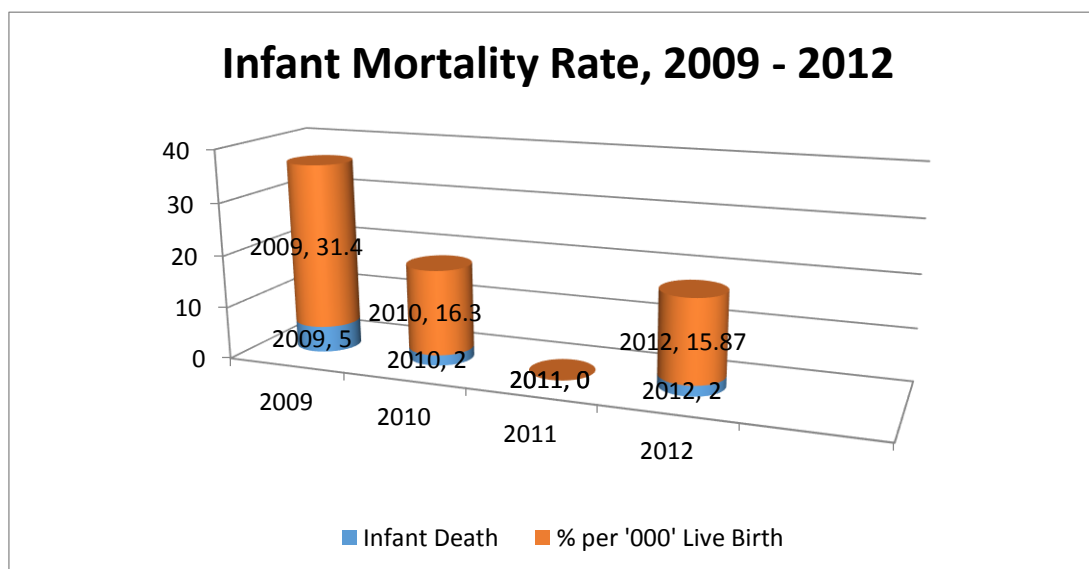


Table II.8 displaying teenage pregnancies by age over the period 2009 – 2012, is an indication of the age range that contributes to the population growth. The picture portrays that a total of 70 teenagers gave birth over a four year span. In 2009, 24 teenagers gave birth. 9 were 19 years of age, 5 were 18 years of age, 4 were 16 and 4 were 17 years of age, 1 was 14 and 1 was 15 years old. By the end of 2012, 21 teenagers gave birth of which 3 were 15 years of age.

**Table II.8: Teenage Pregnancies by age in Nevis, 2009 - 2012**

<i>AGE</i>	<i>YEAR</i>			
	2009	2010	2011	2012
13	0	0	0	0
14	1	1	0	0
15	1	0	0	3
16	4	1	0	1
17	4	5	4	3
18	5	3	3	6
19	9	3	5	8
<i>Total</i>	24	13	12	21

Source: Ministry of Health, Nevis

## Marriages and Divorces:

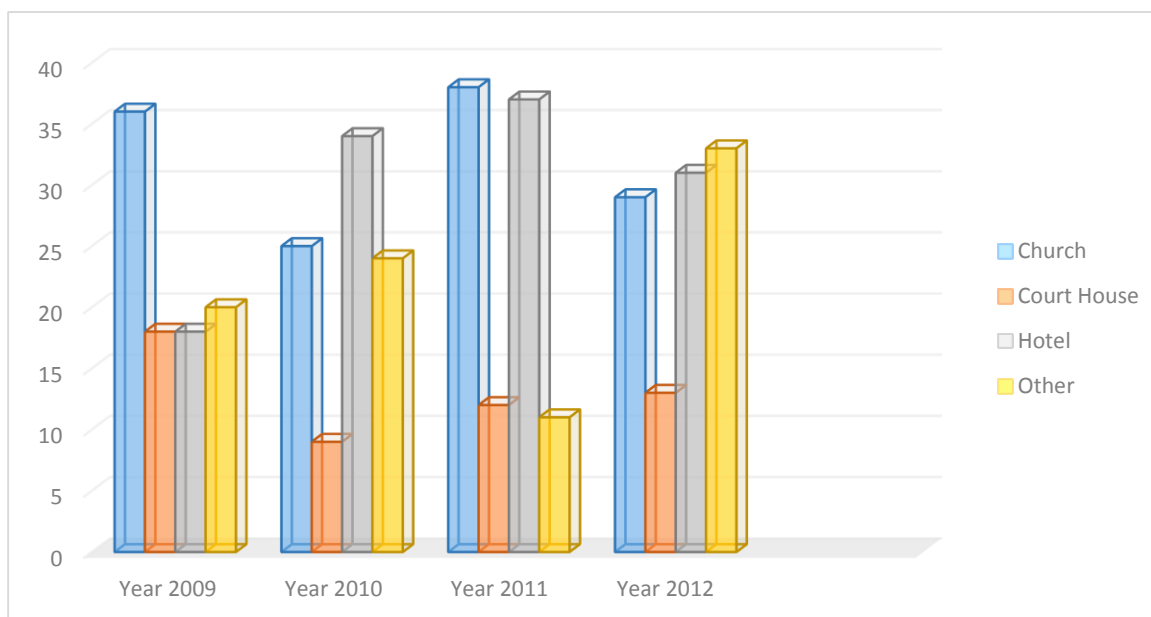
It is no doubt that marital status be included in vital statistics, which can be used as an indicator, factoring into the population increasing or decreasing as well as health statistics where certain chronic illnesses could be genetic. Statistics revealed that between 2009 and 2012, 388 marriages were recorded that took place at different locations on the island. Of that total, 128 took place in a church, 52 took place in the Court House, 120 took place at a hotel and 88 took place at other locations. The table below shows an increase over the last two years from 92 in 2009/2010 to 98 in 2011 and 106 in 2012.

**Table II.9: Location where Marriages took place in Nevis, 2009 - 2012**

Year	Church	Court House	Hotel	Other	TOTAL
2009	36	18	18	20	92
2010	25	9	34	24	92
2011	38	12	37	11	98
2012	29	13	31	33	106
<b>TOTAL</b>	<b>128</b>	<b>52</b>	<b>120</b>	<b>88</b>	<b>388</b>

*Source: Ministry of Health, Nevis*

**Graph II.3: Comparison of places where marriages took place 2009 - 2012**



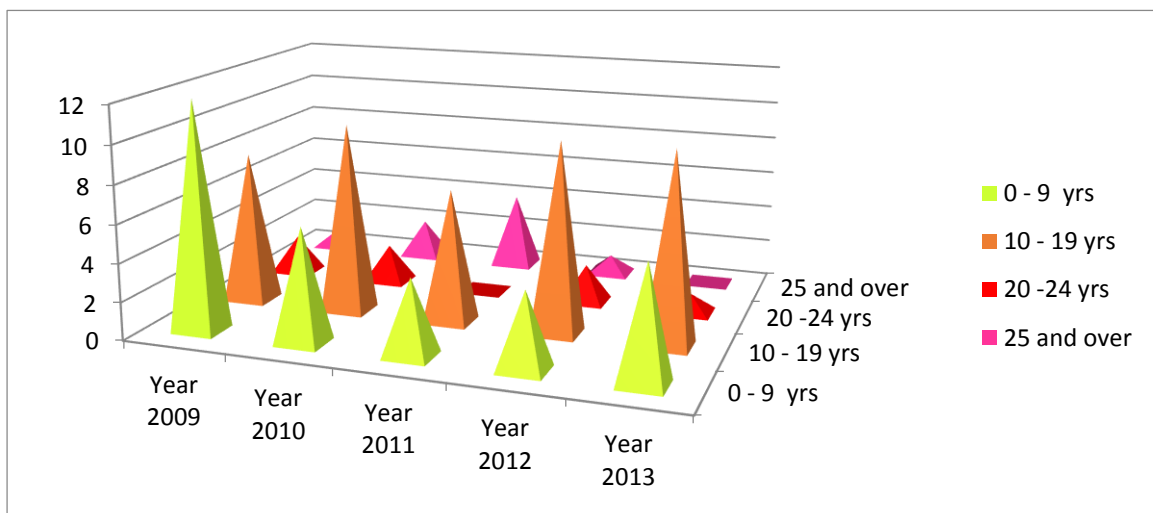
**Table II.10: Duration of Marriages (per year) Nevis, 2009 – 2013**

Year	Duration of Marriages per year						Total
	0-4	5-9	10-14	15-19	20-24	25+	
2009	1	11	8	0	2	1	23
2010	0	6	7	3	2	2	20
2011	0	0	3	4	0	4	11
2012	2	2	5	5	2	1	17
2013	2	4	8	2	1	0	17
Total	5	23	31	14	7	8	88

Source: Registry Office, High Court, Nevis

Table 11.10 above shows that of the 88 divorces which took place over a five year period 31 divorces were legally granted following duration of 10 to 14 years of marriage. In 2009, the highest figure recorded was 11 of a total of 23 for the 5 – 9 years range of marriage.

It is telling that after 25 years of marriage, a divorce still happens. The graph II.4 displays the duration of marriage prior to being divorce. Over the period in review, 8 divorces of said duration were legally granted.

**Graph II.4: Duration of Marriage per year between 2009 and 2013**

Source: Registry Office, High Court, Nevis

## Section III



### **I**nfraststructure

- ∞ Housing – Number of Households
- ∞ Building Permits Issued
- ∞ Titles Issued and Deeds Registered
- ∞ Electricity Consumers & Electricity Production
- ∞ Water Consumption

## Housing

**HOUSEHOLD:** As reports and surveys continue to evolve, definitions may also alter to accommodate these changes. Following the last census, a household was observed as a living arrangement of people, individually or in groups, who provided for themselves basic necessities of living. It further took the form of individuals who usually eat together, sharing at least one daily meal while sleeping most nights within a week. In addition, it must have direct access from the street or a common landing, staircase, passage or gallery where occupants can enter or leave without passing through another person living quarters.



The table below displays a total of 3,832 household enumerated at the end of 2001 census when compared to the 2011 census which enumerated 4213 households. This indicates a 9.9% increase over a ten-year period. The table also demonstrates that the average household size in 2001 was 3.0 in comparison to 2.7 in 2011. The parish of St. James accounted for the largest reduction in household size from 2.7 to 2.4. In 2011, preliminaries show an increase of 268 household when compared to 2001 in St. John Parish, and an increase also in St. James Parish in 2011 of 140 household.

**Table III.1: Number of Households in Nevis, 1970 – 2011**

Area	Household per decade from 1970 - 2011				
	1970	1980	1991	2001	2011P
<b>St. Paul</b>	387	368	460	592	578
<b>St. John</b>	591	593	663	974	1,242
<b>St. George</b>	658	600	601	856	833
<b>St. Thomas</b>	509	527	485	742	752
<b>St. James</b>	484	455	477	668	808
<b>Total</b>	2,629	2,543	2,686	3,832	4,213

Source: Department of Statistics & Economic Planning, Nevis & Statistics Division, St. Kitts



## Building Permits:

Building Permits continue to be issued by the Physical Planning Department within the Ministry of Communications et al. During the five years period under review, residential permits continue to be dominant with an average of 190 permits per year. Commercial permits show both increase and decrease during this period with an average of 26 yearly permits. Overall, a total of 1,209 permits were issued for that period.

**Table III.2: Number of Building Permits Issued in Nevis, 2009- 2013**

Year	New Erections	Additional & Renovations	Removals	*Change of Use	Fencing	Pool	Other
2009	221	88	9	1	24	0	2
2010	146	45	5	1	17	1	8
2011	136	44	6	1	23	1	6
2012	158	54	9	0	14	1	5
2013	120	30	3	0	18	5	7
<b>TOTAL</b>	<b>781</b>	<b>261</b>	<b>32</b>	<b>3</b>	<b>96</b>	<b>8</b>	<b>28</b>

\* Change of use – usage of structure was changed from one purpose to another

Source: Department of Physical Planning

**Table III.3: Number of Building Permits Issued by development type in Nevis, 2009- 2013**

SECTORS	2009	2010	2011	2012	2013
Residential	286	167	169	206	122
Residential Villa	0	1	0	2	7
Residential/ Apartment	3	8	4	5	7
Commercial	32	24	29	19	26
Commercial/Residential	0	1	0	0	0
Industrial	5	0	2	0	0
Institutional	12	4	7	7	3
Hotel/Tourism	0	11	1	0	6
Other	7	7	5	2	12
<b>TOTAL</b>	<b>345</b>	<b>223</b>	<b>217</b>	<b>241</b>	<b>183</b>

Source: Department of Physical Planning

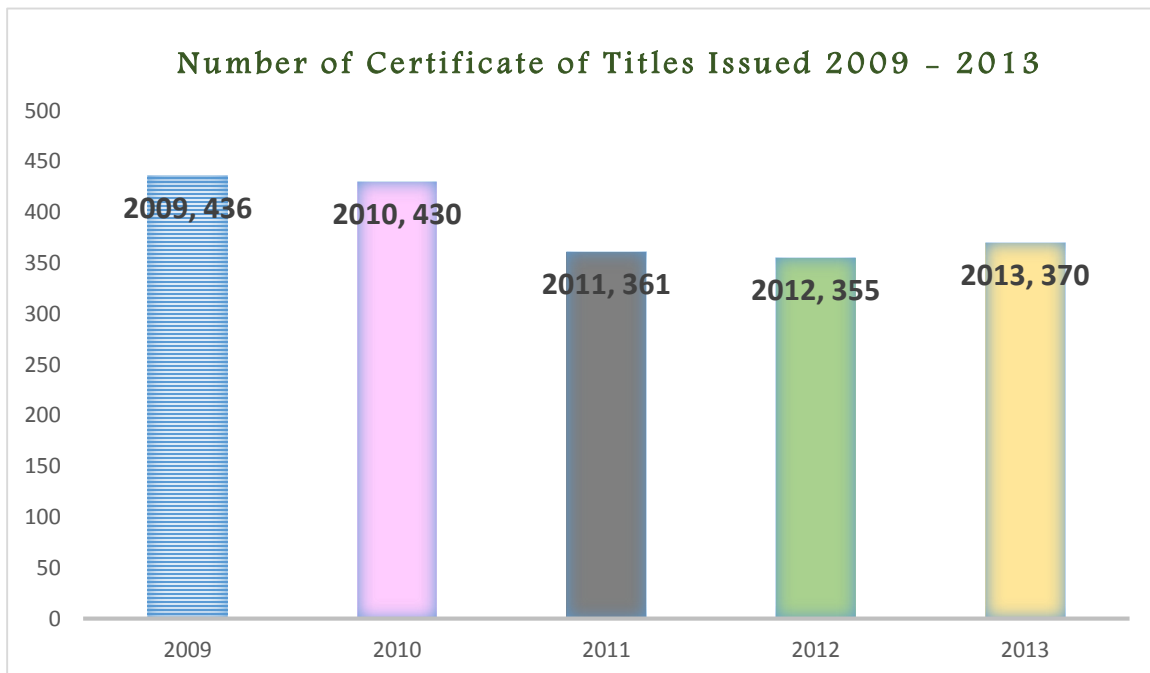
## Title and Deeds.

The following table shows that by the end of 2013, a total of 377 deeds were registered at the Supreme Court Registry in Charlestown. This figure shows to a 3.3% increase over the previous year. In addition, statistics will show that the period under review reveals that the figures fluctuate from one year to the next.

**Table III.4: Type of Deeds registered at the Registry of Titles, Charlestown Supreme Court**

Type of Deed	2009	2010	2011	2012	2013
Conveyance	64	63	44	53	54
Gifts	15	7	14	8	8
Vesting	11	7	18	8	8
Assent	19	10	17	10	10
Reconveyance	30	15	16	17	19
Mortgage	40	36	37	43	45
Debentures	1	1	1	1	1
Others	229	189	242	225	232
<b>TOTAL</b>	<b>409</b>	<b>328</b>	<b>389</b>	<b>365</b>	<b>377</b>

**Graph III.1: Certificates of Title issued at the Supreme Court Registry in Nevis, 2009- 2013**

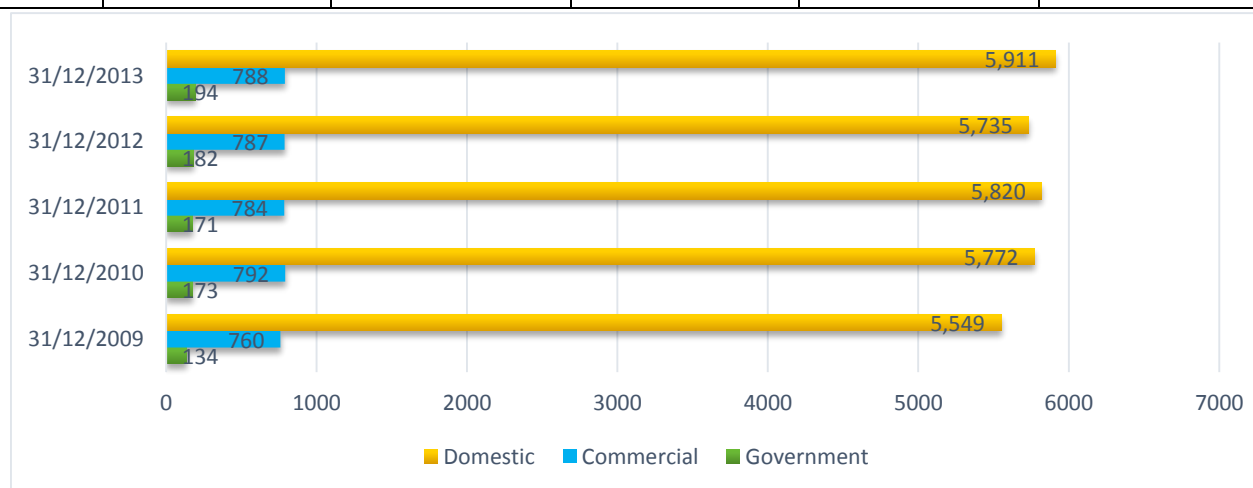


## Electricity Consumers & Electricity Production.

The number of persons in a household directly affects the consumption of electricity and water on a monthly and yearly basis. According to data from the Nevis Electricity Company, apart from a decrease in consumption in 2012, electricity consumption for households over this five year period showed a steady increase. In 2009, domestic consumers consumed 5,549mw of electricity as compared to 2013 with 5,911mw. The maximum demand rate continue to grow from 7.42 to 9.73.

CONSUMER	2009	2010	2011	2012	2013
Government	134	173	171	182	194
Domestic	5,549	5,772	5,820	5,735	5,911
Commercial	760	792	784	787	788
<b>TOTAL</b>	<b>6,443</b>	<b>6,737</b>	<b>6775</b>	<b>6,704</b>	<b>6,893</b>
Total Electricity Generated/Gross Generation (mw/h)	50,995,700.00	50,851,480.00	52,976,300.00	53,540,470.00	52,465,950.00
Maximum Demand	7.42	8.39	8.85	8.61	9.73
Load Factor	76	69	70	70	86

The graph on the right displays a comparison between Government, Domestic and Commercial Users of Electricity.



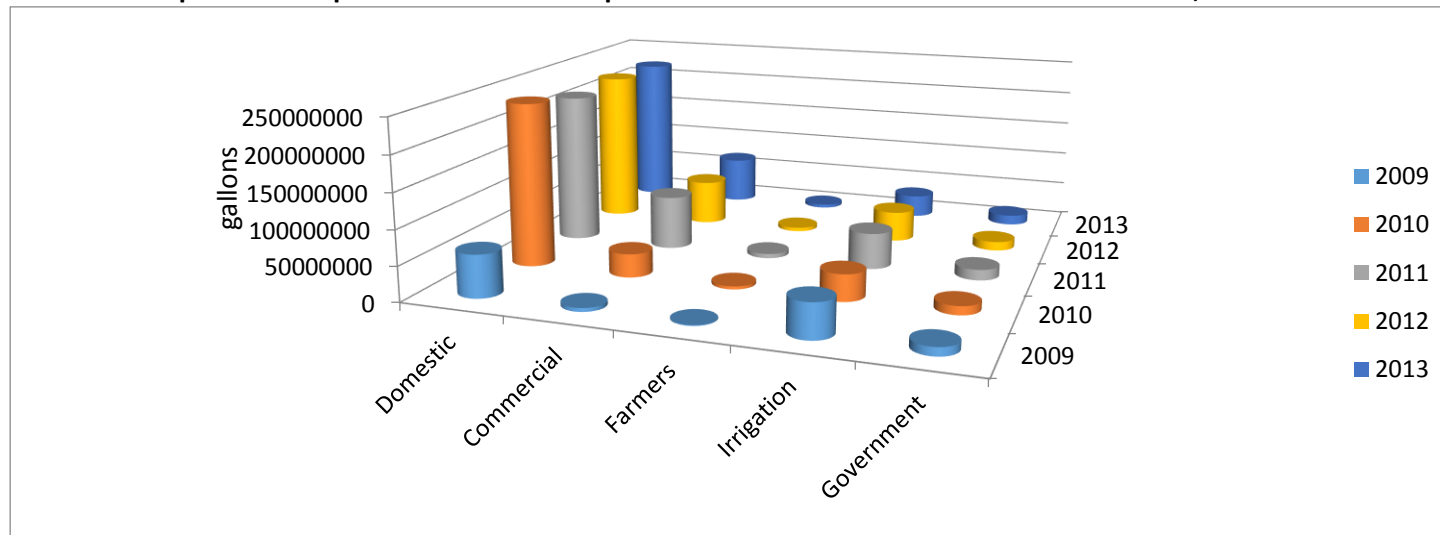
## Water Consumption:

In addition, the table below shows a fluctuating trend of farmers who consume water for various reasons. In 2009 1,092,000 gallons of water was consumed as compared to 5,025,990 gallons in 2013, an increase of 78%. Domestic consumption decreased by 2,118,873 gallons between 2012 and 2013.

**Table III.6: Water Consumption (per gallon) by Consumers, 2009 - 2013**

CONSUMER	2009	2010	2011	2012	2013
DOMESTIC	61,481,940	236,634,050	218,303,210	223,485,503	221,366,630
COMMERCIAL	5,418,550	33,905,120	77,738,950	65,057,025	68,502,480
FARMERS	1,092,000	4,319,570	6,392,130	5,424,890	5,025,990
IRRIGATION	49,684,000	38,484,000	52,194,500	44,189,895	32,711,100
GOVERNMENT	12,000,000	12,500,000	15,300,000	13,000,000	14,400,000
<b>TOTAL</b>	<b>129,676,490</b>	<b>325,842,740</b>	<b>369,930,801</b>	<b>351,159,325</b>	<b>342,008,213</b>

**Graph III.3: Comparison of the consumption of water between the different consumers, 2009 – 2013**



## Section IV



### **T**ransportation

- ∂ Registration – Number of new and used vehicles
- ∂ Number of vehicles licensed
- ∂ Number of Written & Road Test
- ∂ Traffic Accidents Recorded
- ∂ Air and Sea Movements
- ∂ Cargo Movements

## Transportation

The data revealed that at the end of 2013, approximately 590 vehicles were registered in the island of Nevis. While there was an increase in registration by 124 or 26.6% when compared to the previous year, statistics will show that not only a constant in flow of new vehicles are imported into the island, but older vehicles are returning to the streets. Between the years 2009 and 2011, registration decreased by approximately 129 from 615 to 486. Over a five year period a total of 2,662 vehicles were registered which included new and used vehicles. (*See table below*)

Category	Type of Vehicle	2009	2010	2011	2012	2013	Total
Private Cars and Motorcycles	Private Cars	180	136	140	156	168	
	Private Jeeps	224	207	182	164	231	
	Motorcycles	12	10	2	15	13	
	Motor Scooters	7	9	8	11	8	
	Gulf Car	2	5	4	5	1	
	<b>TOTAL</b>	<b>425</b>	<b>367</b>	<b>336</b>	<b>351</b>	<b>421</b>	<b>1,900</b>
Public Service Vehicles (all types)	Motor Omnibuses (passenger bus)	20	15	10	11	11	
	Taxi Cars	3	2	0	2	2	
	Taxi Jeeps	2	1	5	3	2	
	Taxi Buses	4	3	3	3	8	
	Rental Cars	7	0	14	4	3	
	Rental Pickups	0	0	0	0	0	
	Rental Jeeps	17	16	15	16	34	
	Rental Buses	4	0	0	1	3	
	Rental Motorcycles	0	0	1	0	0	
	<b>TOTAL</b>	<b>57</b>	<b>37</b>	<b>48</b>	<b>40</b>	<b>63</b>	<b>245</b>
Commercial Vehicles (all types)	Lorries	34	26	19	12	17	
	Vans	25	19	28	23	18	
	Other/Jeeps	4	2	1	0	6	
	Pickups	59	53	49	38	55	
	Tractors	2	0	2	2	1	
	Loaders	3	1	2	0	0	
	Forklifts	2	0	0	0	0	
	Backhoes	4	0	1	0	6	
	Cranes	0	0	0	0	3	
	<b>TOTAL</b>	<b>133</b>	<b>101</b>	<b>102</b>	<b>75</b>	<b>106</b>	<b>517</b>
	<b>Overall Total</b>	<b>615</b>	<b>505</b>	<b>486</b>	<b>466</b>	<b>590</b>	<b>2,662</b>

*Source: Traffic Department of the Royal St Christopher & Nevis Police Force, Division "C".*

Table IV.2: Number of vehicles licensed in Nevis, 2009 – 2013

Category	Type of Vehicle	2009	2010	2011	2012	2013
Private Cars and Motorcycles	Private Cars	1,368	1,343	1,334	1,317	1,336
	Private Jeeps	1,606	1,828	1,805	1,845	1,896
	Motorcycles	25	22	20	21	22
	Motor Scooters	17	16	8	16	14
	Gulf Car	13	11	17	18	8
	<b>TOTAL</b>	<b>3,029</b>	<b>3,220</b>	<b>3,184</b>	<b>3,217</b>	<b>3,276</b>
Public Service Vehicles (all types)	Motor Omnibuses	73	73	69	69	71
	Taxi Cars	13	11	22	16	23
	Taxi Jeeps	11	15	10	18	15
	Taxi Buses	43	47	45	40	47
	Rental Cars	67	57	45	42	41
	Rental Pickups	1	3	4	8	4
	Rental Jeeps	180	176	165	160	186
	Rental Buses	11	13	8	10	11
	Rental Motorcycles	8	1	4	3	3
	<b>TOTAL</b>	<b>407</b>	<b>396</b>	<b>372</b>	<b>366</b>	<b>401</b>
Commercial Vehicles (all types)	Lorries	209	206	196	203	188
	Vans	182	156	154	157	134
	Other/Jeeps	41	70	79	63	90
	Pickups	610	614	607	566	551
	Tractors	31	12	3	1	1
	Loaders	10	8	6	4	3
	Forklifts	8	6	6	4	4
	Backhoes	40	27	26	19	22
	Cranes	10	8	5	5	2
	<b>TOTAL</b>	<b>1,141</b>	<b>1,107</b>	<b>1,082</b>	<b>1,022</b>	<b>995</b>
	<b>OVERALL TOTAL</b>	<b>4,583</b>	<b>4,723</b>	<b>4,638</b>	<b>1,605</b>	<b>4,672</b>

Source: Department of the Royal St. Christopher & Source: Traffic Nevis Police Force, "C" Division

## Driver's Written Test:

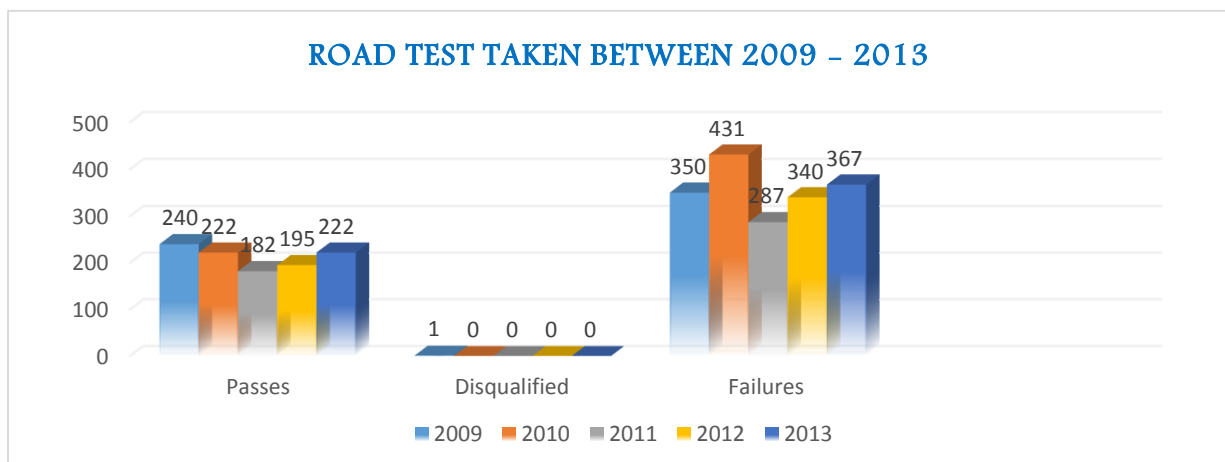
Drivers Written Test is an examination taken before a person learning to drive can take a road test. The driver's written test is designed to test the basic understanding of the rules of the road. During the years 2009 to 2013, a total of 2,775 Driver's Written Test were taken. Of this total there were 1,851 failures and 924 passes. This indicates an average failure of 67% and an average pass rate of 33%.

**Table IV.3: Results of written test taken at the Traffic Department, 2009 - 2013**

Year	Number of Passes	Number Disqualified	Number of Failures	Total
2009	157	0	426	583
2010	232	0	366	598
2011	162	0	333	495
2012	165	0	317	482
2013	208	0	409	617
<b>TOTAL</b>	<b>924</b>	<b>0</b>	<b>1,851</b>	<b>2,775</b>

## Driver's Road Test:

The chart below displays the result of a combination of 2,837 drivers' who took the Driver's Road Test at the Traffic Department over a five year period. Statistics revealed that there was one disqualified person who sat the examination in 2009, while in that said year, 350 persons failed as opposed to 240 persons passing. With an increase in persons taking the driver's road test, over the last two years, the number of failures also increased. Between 2012 and 2013, a total of 1,124 persons took the examination, 707 persons failed while 417 persons passed.





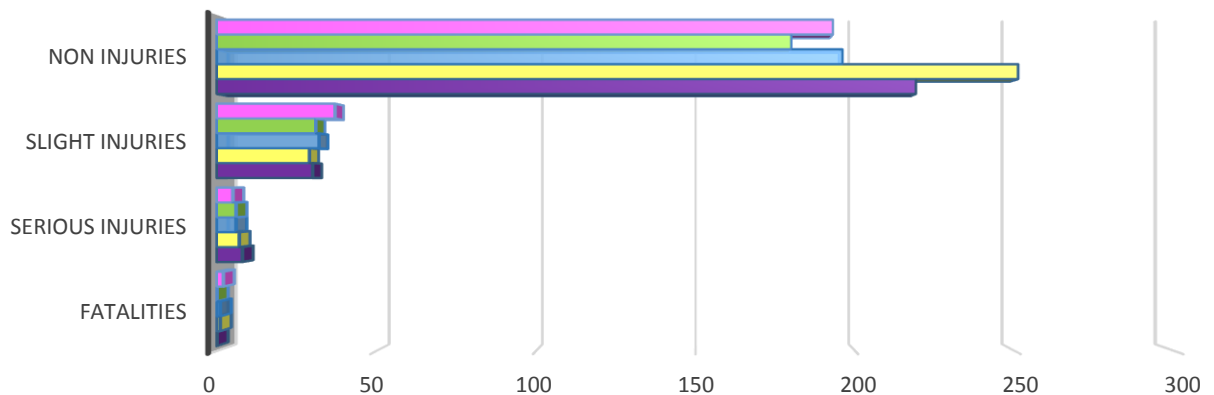
## Traffic Accidents Recorded.

Statistics will show that between December 31, 2009 and December 31, 2013, 1,234 road traffic accidents were recorded. The period under review shows that from the amount recorded, the results are as follow - 4 fatalities; 32 serious injuries; 159 slight injuries and 1,039 no injuries.

**Table IV.4: Results of Accident Recorded at the Traffic Department, 2009 – 2013**

Results of Accident	2009	2010	2011	2012	2013	Total
Fatalities	0	1	1	0	2	4
Serious Injury	8	7	6	6	5	32
159Slight Injury	30	29	32	31	37	159
Non1,039-Injury	219	251	196	180	193	1,039
<b>Total Road Accidents</b>	<b>257</b>	<b>288</b>	<b>235</b>	<b>217</b>	<b>237</b>	<b>1,234</b>

**Accident Results recorded over the period 2009 – 2013**



	Fatalities	Serious Injuries	Slight Injuries	Non Injuries
2013	2	5	37	193
2012	0	6	31	180
2011	1	6	32	196
2010	1	7	29	251
2009	0	8	30	219

Source: Traffic Department of the Royal St. Christopher & Nevis Police Force, Division "C"

## Air Transportation:

Air transportation is a truly significant industry in the Nevis economy, and it is subjected to domestic and international policies because of its importance to trade, diplomacy and national development. The travelling public as well as tourist place demand on this industry for safe arrivals and departures. Tables IV.5, IV.6 and IV.7 as well as Graph IV.3 below show the arrivals and departures of aircrafts and travellers, as well as cargo movements at the Vance W Amory International Airport from 2009 to 2013.

**Table IV.5: Aircraft movements via Vance W Amory International Airport, 2009 - 2013**

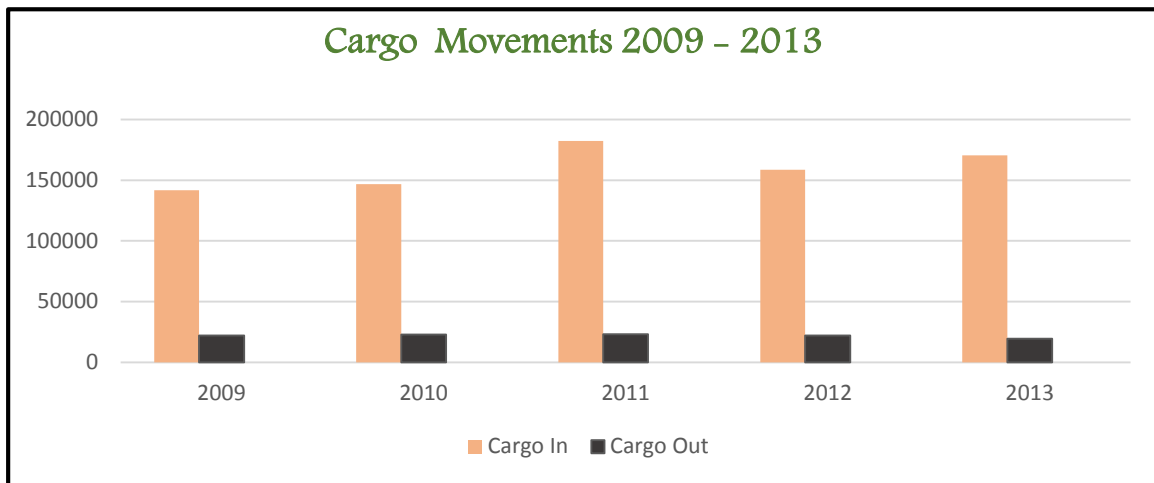
Year	Per ½ Year	Arrival	Departure	Total
2009	June	1,639	1,640	3,279
	December	1,241	1,237	2,478
	<b>Total</b>	<b>2,880</b>	<b>2,877</b>	<b>5,757</b>
2010	June	1,620	1,622	3,242
	December	1,726	1,722	3,448
	<b>Total</b>	<b>3,346</b>	<b>3,344</b>	<b>6,690</b>
2011	June	1,515	1,516	3,031
	December	1,301	1,298	2,599
	<b>Total</b>	<b>2,816</b>	<b>2,814</b>	<b>5,630</b>
2012	June	1,663	1,662	3,325
	December	1,405	1,402	2,807
	<b>Total</b>	<b>3,068</b>	<b>3,064</b>	<b>6,132</b>
2013	June	1,626	1,629	3,255
	December	1,431	1,424	2,855
	<b>Total</b>	<b>3,057</b>	<b>3,053</b>	<b>6,110</b>
<b>OVERALL TOTAL</b>		<b>15,167</b>	<b>15,152</b>	<b>30,319</b>

*Source: Nevis Air & Sea Ports Authority*

**Table IV.6: Cargo movements via Vance W Amory International Airport, 2009 - 2013**

Year	2009	2010	2011	2012	2013
Cargo IN	141,743	146,661	182,222	158,680	170,505
Cargo OUT	22,080	22,940	23,194	22,059	19,493
Total Cargo (Lbs)	163,823	169,601	205,416	180,739	189,998

*Source: Nevis Air & Sea Ports Authority*

**Graph IV.3: Movements of Cargo (lbs) via Vance W Amory International Airport, 2009 – 2013****Table IV.7: Passengers movements via Vance W Amory International Airport, 2009 – 2013**

Year	Per ½ Year	Arrival	Departure	Total
2009	June	7,618	7,560	15,178
	<b>Total</b>	<b>13,567</b>	<b>12,947</b>	<b>26,514</b>
2010	June	6,030	5,693	11,723
	December	6,745	6,039	12,784
	<b>Total</b>	<b>12,775</b>	<b>11,732</b>	<b>24,507</b>
2011	June	1,212	6,114	7,326
	December	5,170	4,772	9,942
	<b>Total</b>	<b>6,382</b>	<b>10,886</b>	<b>17,268</b>
2012	June	5,217	5,522	10,739
	December	4,648	4,525	9,173
	<b>Total</b>	<b>9,865</b>	<b>10,047</b>	<b>19,912</b>
2013	June	5,296	5,517	10,813
	December	4,559	4,536	9,095
	<b>Total</b>	<b>9,855</b>	<b>10,053</b>	<b>19,908</b>
OVERALL TOTAL		<b>52,444</b>	<b>55,665</b>	<b>108,109</b>

Source: Nevis Air &amp; Sea Ports Authority

## Sea Transportation:

The movement of persons, goods, and services between the twin island Federation of St. Kitts and Nevis continues to impact economic growth. This movement is facilitated by locally owned vessels between Basseterre and Charlestown, and between Basseterre and Long Point, Nevis. See tables and graphs below displaying data collected from the Air & Sea Ports Authority.

**Table IV.8: Inter-Island Ferry Passengers movements between Charlestown and Basseterre, 2009 -2013**

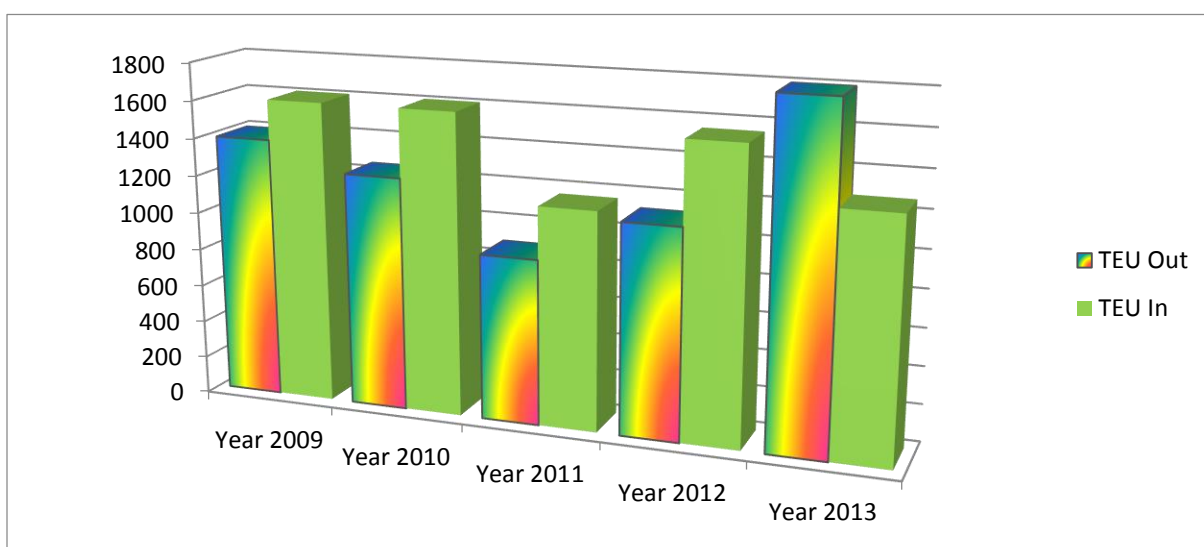
<i>Year</i>	<i>Per ¼ Year</i>	<i>Arrivals</i>	<i>Departures</i>	<i>Total</i>
<i>2009</i>	March	29,148	29,021	58,169
	June	31,810	29,433	61,243
	September	34,607	39,704	74,311
	December	31,968	31,253	63,221
	<b>Total</b>	127,533	129,411	256,944
<i>2010</i>	March	31,514	30,084	61,598
	June	23,543	23,206	46,749
	September	25,304	26,081	51,385
	December	26,576	25,383	51,959
	<b>Total</b>	106,937	104,754	211,691
<i>2011</i>	March	29,661	27, 863	57,524
	June	26,928	26,245	53,173
	September	31,731	31,057	62,788
	December	29,943	29,346	59,289
	<b>Total</b>	118,263	365,284	483,547
<i>2012</i>	March	29,684	26,416	56,100
	June	28,452	27,039	55,491
	September	32,332	30,565	62,897
	December	27,604	26,121	53,725
	<b>Total</b>	118,072	110,141	228,213
<i>2013</i>	March	31,989	30,025	62,014
	June	30,052	29,077	59,129
	September	29,850	29,003	58,853
	December	33,112	30,912	64,024
	<b>Total</b>	125,003	119,017	244,020
<b>OVERALL TOTAL</b>		595,808	114,511	232,774

*Source: Nevis Air and Sea Ports Authority*

**Table IV.9: Cargo Movements via Sea Ports, 2009 – 2013**

<b>Year</b>	<b>Per ½ Year</b>	<b>TEU's Out</b>	<b>TEU's In</b>	<b>Total</b>
<b>2009</b>	June	648	800	1,448
	December	746	808	1,554
	<b>Total</b>	<b>1,394</b>	<b>1,608</b>	<b>3,002</b>
<b>2010</b>	June	657	815	1,472
	December	588	792	1,380
	<b>Total</b>	<b>1,245</b>	<b>1,607</b>	<b>2,852</b>
<b>2011</b>	June	453	618	1,071
	December	429	541	970
	<b>Total</b>	<b>882</b>	<b>1,159</b>	<b>2,041</b>
<b>2012</b>	June	546	728	1,274
	December	570	821	1,391
	<b>Total</b>	<b>1,116</b>	<b>1,549</b>	<b>2,665</b>
<b>2013</b>	June	861	588	1,449
	December	934	681	1,615
	<b>Total</b>	<b>1,795</b>	<b>1,269</b>	<b>3,064</b>
<b>OVERALL TOTAL</b>		<b>6,432</b>	<b>7,192</b>	<b>13,624</b>

Source: Nevis Air and Sea Ports Authority

**Graph IV.4: Comparison of TEU's in and TEU**

**Table IV.10: Cargo Movement (per tonnage) via the Sea Ports, 2009 - 2013**

YEAR	MONTH	OIL Tonnage	Sand, stone, etc Tonnage	Vehicle Tonnage	Vegetable Tonnage	Con. Tonnage	Brk Bulk Tonnage
2009	March	3,776	2,719	736	20	7,865	1,140
	June	5,887	3,543	307	34	8,172	1,429
	September	2,132	7,190	588	26	8,756	1,226
	December	5,475	23,493	318	24	9,257	3,049
	<b>TOTAL</b>	<b>17,270</b>	<b>36,945</b>	<b>1,949</b>	<b>104</b>	<b>34,050</b>	<b>6,844</b>
2010	March	5,791	7,084	437	20	8,011	1,129
	June	4,257	6,117	299	263	7,763	255
	September	4,875	2,959	457	24	9,254	265
	December	3,241	8,040	133	22	10,790	557
	<b>TOTAL</b>	<b>18,164</b>	<b>24,200</b>	<b>1,326</b>	<b>329</b>	<b>35,818</b>	<b>2,206</b>
2011	March	3,338	9,412	301	667	9,342	485
	June	4,780	17,785	453	719	7,585	375
	September	2,734	4,293	217	377	6,519	370
	December	4,100	3,031	262	426	8,755	425
	<b>TOTAL</b>	<b>14,952</b>	<b>34,521</b>	<b>1,233</b>	<b>2,189</b>	<b>32,201</b>	<b>1,655</b>
2012	March	2,564	7,738	203	314	7,132	1,447
	June	3,286	7,957	204	240	6,828	477
	September	6,237	2,263	183	796	6,062	226
	December	2,512	8,548	198	109	10,432	393
	<b>TOTAL</b>	<b>14,599</b>	<b>26,506</b>	<b>788</b>	<b>859</b>	<b>30,454</b>	<b>2,543</b>
2013	March	475	4,635	315	855	8,754	330
	June	3,918	5,834	168	561	8,340	293
	September	3,007	2,997	189	442	8,720	288
	December	6,735	3,309	356	686	9,693	348
	<b>TOTAL</b>	<b>14,135</b>	<b>16,775</b>	<b>1,028</b>	<b>2,544</b>	<b>35,507</b>	<b>1,259</b>

*Source: Nevis Air and Sea Ports Authority*

The table above illustrates movement of specific shipments recorded at the Sea Ports on Nevis. Aggregates (Sand, Stone) and container movements are the major contributors to the revenue collected on import goods, despite the trend showing a constant decrease in Aggregates. At the end of 2013, Aggregates movement was 16,775 per tonnage, Containers movement 35,507 per tonnage as opposed to the other cargoes; which are Oil 14,135, Vehicles 1,028, Vegetables 2,544 and Break Bulk contributing 1,259 per tonnage.

## Section V



### **T**ourism

∂ Accommodation – Number of Hotels, Rooms & Beds

∂ Total Visitors Arrivals

∂ Visitors Stay Over Accommodation

∂ Visitors Length of Stay

∂ Number of Yachts Call & Yacht Passengers

∂ Number of Cruise Ships Call & Cruise Passengers

## Accommodation

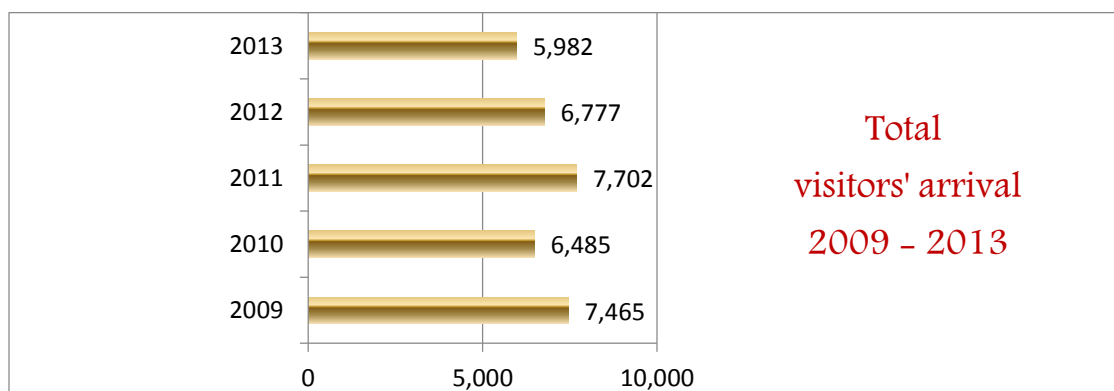
Accommodation on Nevis tends to be either in the hills or on the coastlines. You can choose from luxury hotels, colonial style inns, superb villas and contemporary condos. All accommodations offers comfort and relaxation, giving plenty of time to enjoy the Caribbean pursuit of 'liming'.

Meanwhile the statistical table below will show that over the five years trend that is being analyzed, the number of hotels on the island of Nevis remained at eight for its 36 square miles of unspoiled beauty. In addition, there is a total of 1,148 hotel rooms and 2,116 beds. Table V.1: also shows that there was an increase in the number of beds over the years.

**Table V.1: Number of Hotels, Rooms and Beds in Nevis 2009 - 2013**

Year	No. of Hotels	No. of Rooms	No. of Beds
2009	7	152	245
2010	7	196	301
2011	8	368	507
2012	8	386	530
2013	8	386	533
<b>Total</b>		<b>1148</b>	<b>2116</b>

Data revealed that inbound visitors recorded a slight decreased over the years. 7,465 tourists visited the island in 2009 compared to 5,982 in 2013, a (19.86%) decrease or 1,483 less visitors. The data provided also revealed that visitors arrivals between 2010 and 2012 increases over the period. A total of 6,485 visitors graced our shores in 2010 as compared to 6,777 in 2012. By the end of 2011, visitors' arrival accounted for 7,702, the highest figure during the period under review. The graph and table V.2. below illustrate the findings.





**Table V.2: Total Monthly Visitors Arrivals to Nevis, 2009 - 2013**

Month	2009	2010	2011	2012	2013	Total
January	1,308	690	824	763	869	4,454
February	877	636	729	715	506	3,463
March	963	632	861	820	746	4,022
April	627	462	718	579	643	2,382
May	541	446	577	485	433	2,482
June	366	*	533	396	351	1,646
July	790	857	1,148	525	441	3,680
August	503	629	513	644	321	2,610
September	314	313	323	337	242	1,594
October	271	343	230	316	307	1,467
November	285	356	372	411	430	1,854
December	620	1,121	874	786	693	4,184
<b>Total</b>	<b>7,465</b>	<b>6,485</b>	<b>7,702</b>	<b>6,777</b>	<b>5,982</b>	<b>34,411</b>

## Stay Over Visitors Accommodation.

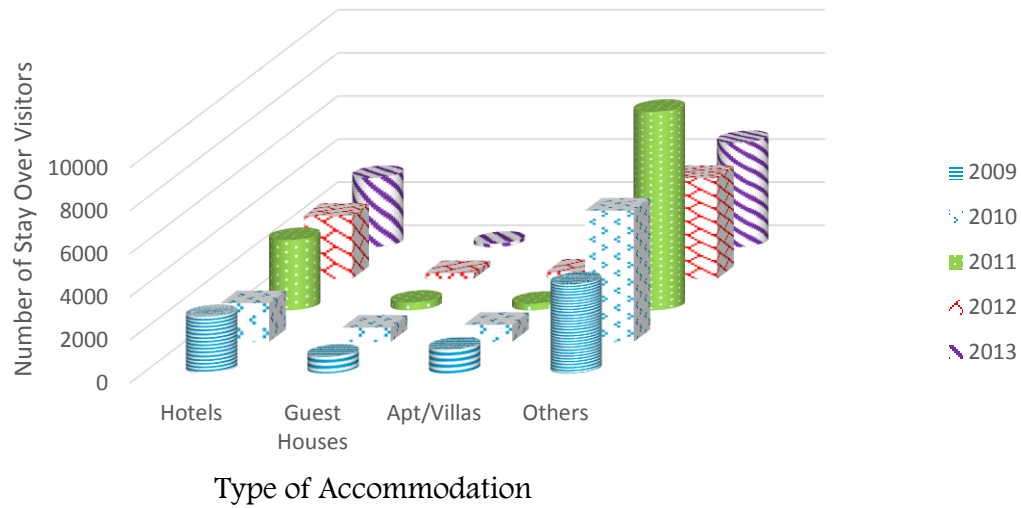
It is understandable that a Stay Over Tourist or Excursionist is a tourist that stays in a country or island for more than 24 hours; and over the last five years, the island of Nevis has seen an influx in stay over arrivals at various accommodations. An analysis of the period under review saw that in 2009, 8,637 stay over visitors graced our shores while in 2013 8,648, an increase of 11 or 0.13%. Table V.3 will revealed that 2011 recorded the highest number of visitors, 13,140. It will also revealed that of that total, 3,265 accounted for hotel accommodation, while the guest houses, apartments and villas accounted for 657.

**Table V.3: Accommodation for Stay Over Visitors in Nevis, 2009– 2013**

Year	2009	2010	2011	2012	2013	Total
<i>Accommodation</i>						
<i>Hotel</i>	2,616	1,798	3,265	2,920	3,219	13,818
<i>Guest Houses</i>	779	663	356	266	165	2,229
<i>Apt/Villas</i>	1,110	791	301	339	422	2,963
<i>Others</i>	4,132	6,096	9,218	4,680	4,842	28,968
<b>Total Stay Over</b>	<b>8,637</b>	<b>9,348</b>	<b>13,140</b>	<b>8,205</b>	<b>8,648</b>	<b>47,978</b>

Source: Department of Statistics & Economic Planning, Nevis

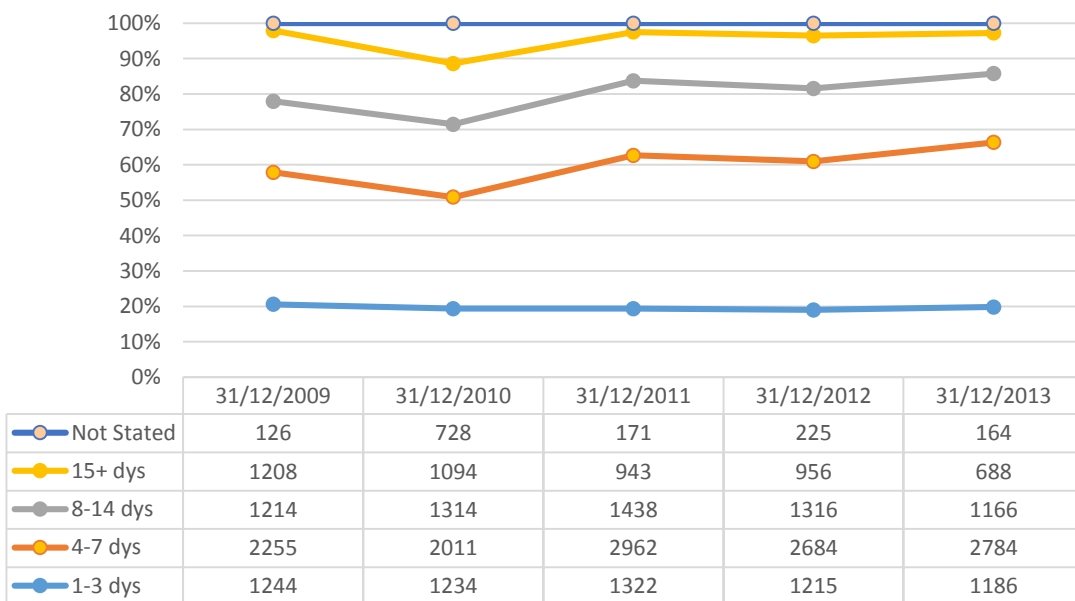
Comparison of Stay Over Visitors to Nevis 2009 – 2013



## Length of Stay.

The graph below demonstrates the various time period of stay over visitors/tourists who not only graced the shores with their presence but enjoyed the ambience for not less than one day but more than 15 days.

Length of Stay for tourist arrivals 2009 –2010

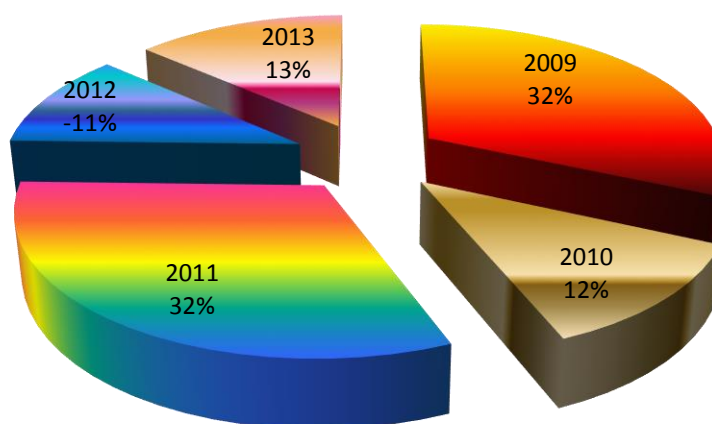


## Yacht and Cruise Passengers:

The total yacht and cruise passengers over the period under review is significant. The information shows that between 2008/2009 the percentage change was 40.1% when compared to 2010/2011 with 39.9%. However, the table and graph below will show changes from year to year when comparing the total yacht and cruise passengers' arrivals.

**Table V.4. Percentage change per ½ year between Yacht and Cruise Passengers, 2009 – 2013**

Year	Per 1/2 Year	Yacht Passengers	Cruise Passengers	Total Yacht and Cruise Passenger
2009	June	1,165	3,364	4,529
	December	1,103	404	1,507
	Total	2,268	3,768	6,036
Percentage change 2008/2009				40.1
2010	June	2,330	2,580	4,910
	December	1,091	962	2,053
	Total	3,421	3,542	6,963
Percentage change 2009/2010				15.4
2011	June	3,171	4,283	7,454
	December	1,293	994	2,287
	Total	4,464	5,277	9,741
Percentage change 2010/2011				39.9
2012	June	3,284	2,993	6,277
	December	1,076	1,027	2,103
	Total	4,360	4,020	8,380
Percentage change 2011/2012				(14.0)
2013	June	2,859	3,016	5,875
	December	2,890	1,048	3,938
	Total	5,749	4,064	9,813
Percentage change 2012/2013				17.1

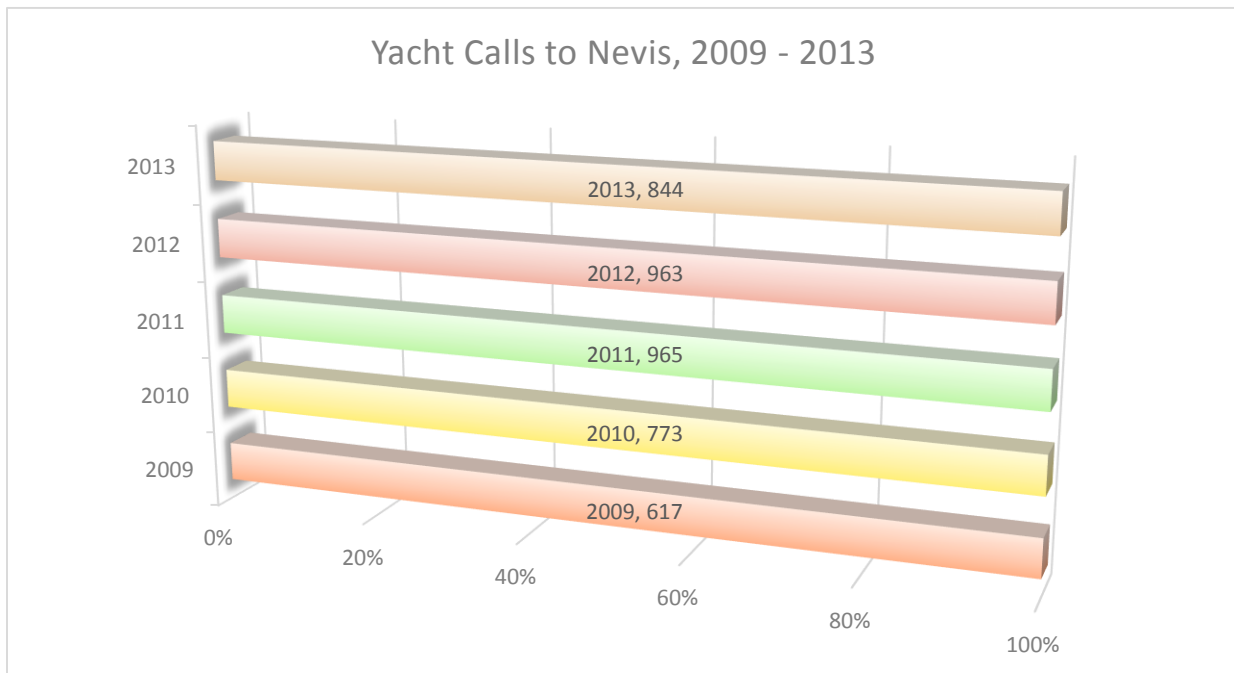
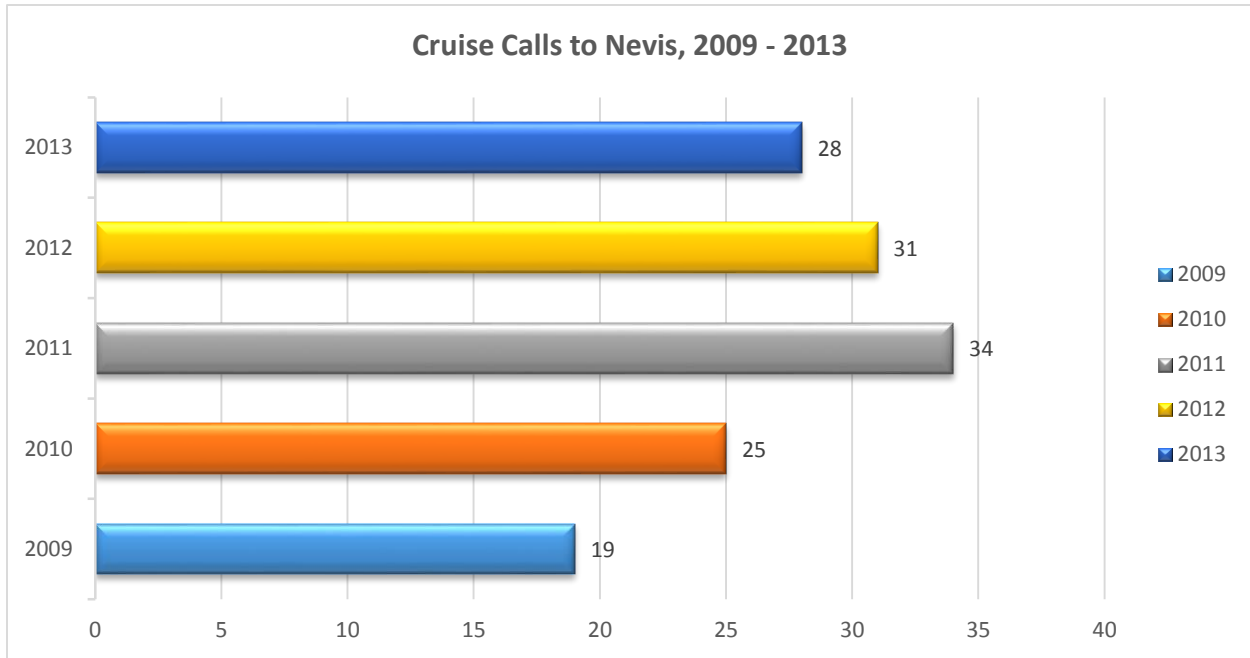
**Percentage change between Yacht & Cruise Passengers, 2009 - 2013**

Compared to a year ago, the latest trend of cruise calls to the shores of Nevis slightly decreased by 3. According to the data provided by the Statistics Department, 31 cruise calls were made in 2012, of an overall total of 137 cruise calls between 2009 and 2013. The highest recorded figure for that period was 34 in 2011. The table below also shows that between 2009 and 2013, there was an increase in cruise calls, resulting in some 47.4%.

During the period 2009 to 2013, a total of 4,162 yacht calls to Nevis. Although the trend showed changes from year to year, at the end of 2013, there was an increase of 227 yacht calls to the island when compared to 2009. Moreover, the table also shows a constant increase in yacht arrivals between that said period even though the data will reveal a decrease by some 119 yacht calls between the 2012 and 2013.

**Table V.5. Number of Cruise and Yacht Calls to Nevis, 2009 – 2013**

Year	Cruise Calls	Yacht Calls
2009	19	617
2010	25	773
2011	34	965
2012	31	963
2013	28	844
<b>Total</b>	<b>137</b>	<b>4,162</b>



## Section VI



### **Health and Social**

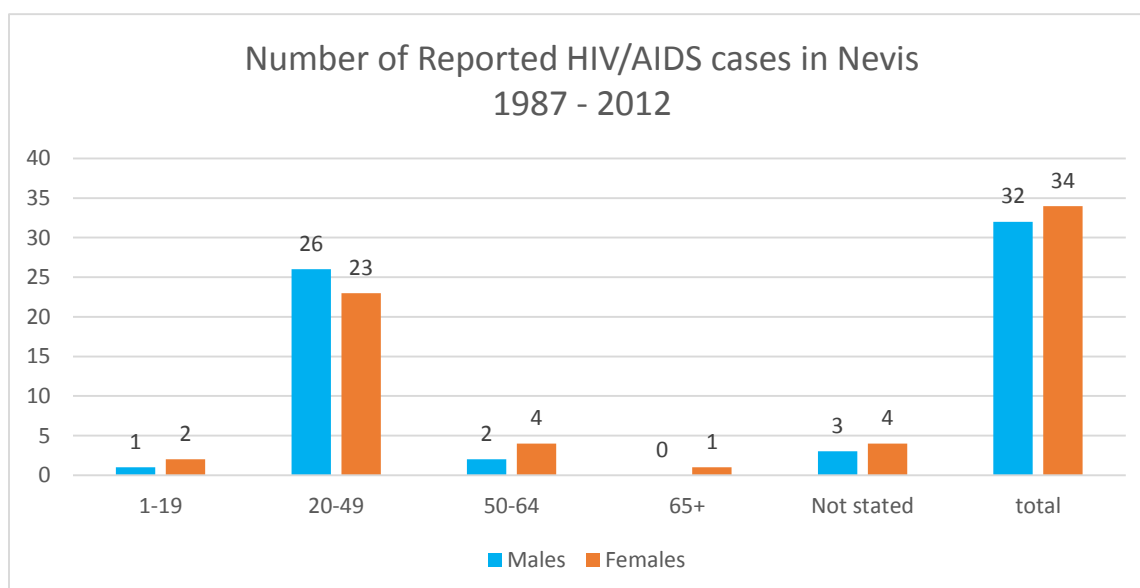
- ∂ Number of reported HIV/AIDS cases
- ∂ Number of reported HIV/AIDS cases by age
- ∂ Diabetic Patients recorded by age and gender
- ∂ Hypertensive Patients recorded by age and gender
- ∂ Intentional and Unintentional Injuries

## Health

The Ministry of Health through its Health Promotion Unit provides accurate and accessible information on how to reduce the risk of illnesses, diseases and injuries and encourages persons to live healthy and productive lives. The Ministry of Health is thus concerned with threats to health based on population health analysis and therefore provides information to show the prevalent illnesses in our society along with information on services provided at the Alexandra Hospital.

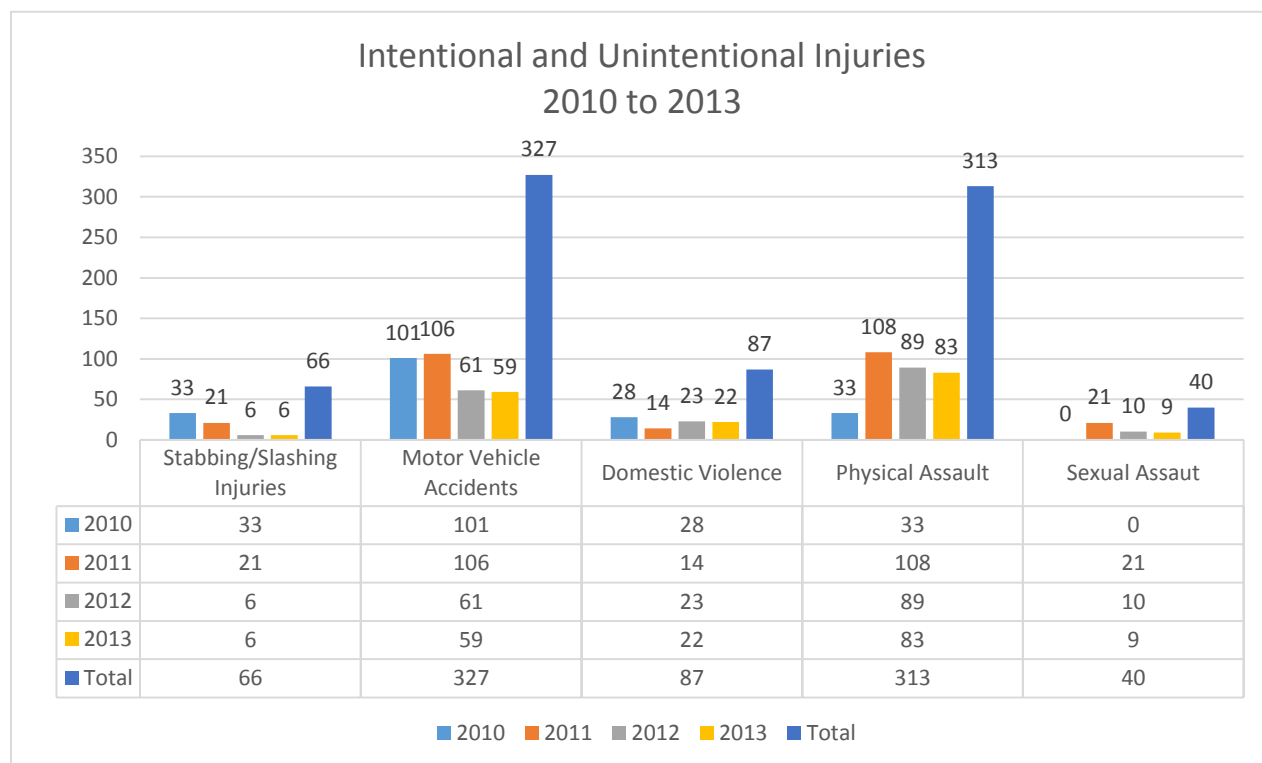
Based on information supplied by the Health Information Unit the number of reported cases of HIV/AIDS for the period mentioned is **66** with the highest record within the 20-49 age group. According to the statistics females amount to just 2 more than the males (*see table and graph below*).

Gender	Age Group				Not Stated	Total
	1 - 19	20 - 49	50 - 64	65 +		
Males	1	26	2	0	3	32
Females	2	23	4	1	4	34
Total	3	49	6	1	7	66



## Intentional and Unintentional Injuries 2010 –2013:

The graph below shows data for intentional and unintentional injuries recorded by the Alexandra Hospital for the period 2010 to 2013; with the highest being Motor Vehicle Accident followed closely by Physical Assault.



*Source: Health Promotion Unit, Nevis*

Data provided from the Ministry of Health also revealed that the number of reported domestic violence and stabbing/slashing injuries are slowly reducing. In 2010 there was 28 incident of domestic violence recorded as compared to 2013 with 22; stabbing/slashing injuries accounted for 33 in 2010 compared to 6 in 2013.

The trend revealed for physical assault shows sign of slight decrease in 2013 as opposed to 2011 and 2012, when it decreased from 108 in 2011 to 89 in 2012. Sexual assault decreased by some 57.14% or by 12 in 2013 when compared to 2010 with 21 cases recorded.

Motor vehicle accidents is another unintentional or unintentional injury recorded at the Ministry of Health. Over the years, the decrease in accidents recorded has been significant. By the end of December 31, 2013, the recorded figure stood at 59 when compared to 2011 with 106.



Table VI.2. Registered Diabetics at different Health Centre in Nevis, 2009 – 2013

Health Centre	2009		2010		2011		2012		2013		Total
	M	F	M	F	M	F	M	F	M	F	
Charlestown	42	109	46	113	51	105	48	104	47	108	773
Brown Hill	19	34	23	33	22	38	23	34	19	36	281
Gingerland	48	108	54	113	57	107	51	100	53	94	785
Butlers	10	30	9	32	10	33	9	31	6	36	206
Combermere	12	35	13	36	12	35	14	38	12	39	246
Cotton Ground	16	25	16	26	17	24	15	28	19	28	214
Yearly Total	147	341	161	353	169	342	160	335	156	341	2,505
	488		514		511		495		497		

Table VI.3. Registered Hypertensive Patients at different Health Centre in Nevis, 2009 – 2013

Health Centre	2009		2010		2011		2012		2013		Total
	M	F	M	F	M	F	M	F	M	F	
Charlestown	36	70	39	78	40	89	39	88	42	85	606
Brown Hill	22	41	23	42	22	41	22	40	22	40	315
Gingerland	29	92	45	108	46	103	42	101	42	101	709
Butlers	5	16	7	18	9	17	7	16	7	16	118
Combermere	16	44	18	51	18	48	21	47	21	47	331
Cotton Ground	17	40	15	41	16	41	19	38	19	39	285
Yearly Total	125	303	147	338	151	339	150	330	153	328	
	428		485		490		480		481		2,364

Source: Health Promotion Unit, Nevis

## Dental Unit.

Through its mission statement, the Dental Unit which operates at two locations on the island (Charlestown and Gingerland Health Centres), strives to provide healthy smiles for healthy living through high quality primary oral health care. As one of the Unit goals is to improve and introduce more school based prevention programs, an overall total of 8,992 children were provided with dental services over the five year period under review.

Statistics will show that there was a decrease of some 680 children by the end of 2013 when compared to the end of 2009. However, when comparing 2013 to 2012, information will show an increase of some 203 children who received dental care in 2013.

Table VI. 2: Dental Unit trend by Services Rendered and by Patients 2009 – 2013

YEAR	<u>Services Rendered</u>								<u>Patients</u>		
	Extraction	Fillings	Prophylaxis / Cleaning	Sealants	Root Canal	Examinations	Other	Total	Adults	Children	Total
2009	690	1,757	1,251	53	31	1,625	157	<b>5,564</b>	2,348	2,439	<b>4,787</b>
2010	634	1,213	949	62	112	2,137	186	<b>5,293</b>	2,013	1,695	<b>3,708</b>
2011	426	1,023	539	78	40	977	33	<b>3,116</b>	1,296	1,543	<b>2,839</b>
2012	356	1,098	977	40	42	1,096	70	<b>3,679</b>	1,402	1,556	<b>2,958</b>
2013	423	778	1,523	7	17	1,154	94	<b>3,996</b>	1,265	1,759	<b>3,024</b>
Total	<b>2,529</b>	<b>5,869</b>	<b>5,239</b>	<b>240</b>	<b>242</b>	<b>6,989</b>	<b>540</b>	<b>21,648</b>	<b>8,324</b>	<b>8,992</b>	<b>17,316</b>

Source: Health Promotion Unit, Nevis

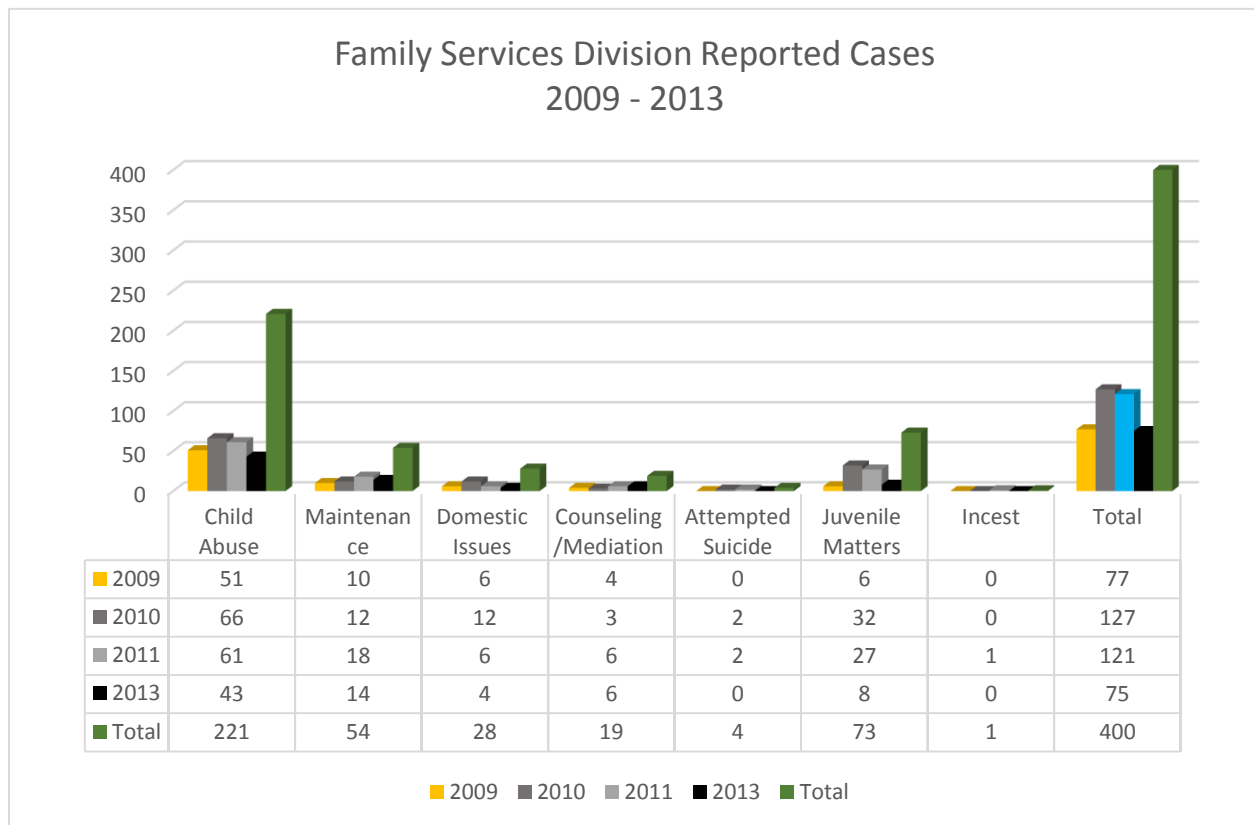
The table above also gives credence to an overall total of 21,648 various services rendered over the years. In 2013 the total was 3,996 as compared to 5,564 in 2009, a decrease of some 1,568, even though at the end of 2013, there was increase of 317 when compared to 2012 with 3,679.

## Social Services

The Social Services Department is geared towards strengthening the capacity and opportunity for social participation of people who are in economically vulnerable situations, and to strengthen protection of children at risk, the elderly and the indigents in the society. Thus the Department is committed to ensuring equality and human rights based on the best available evidence and understanding of the people of our society.

### Family Services:

Family Services Division is one of the units within the Ministry of Social Services catering to the needs of less fortunate families as well as to curb the impact of social ills. According to *Family Services Division Reported Cases 2009 – 2013 (no data available for 2012)*, a total of **400 cases** were reported for the categories of cases listed in the graph below with 2010 with the highest reported cases followed closely by 2011. The modal category of cases is Child Abuse Statistics totalling **221** reported cases over the 5 year period with the highest in 2010 of 66 cases.



## Gender Affairs:

One of the Nevis Island Administration's thrust is the ongoing social service to its senior citizens in the form of providing a hot meal to the less fortunate in the communities.

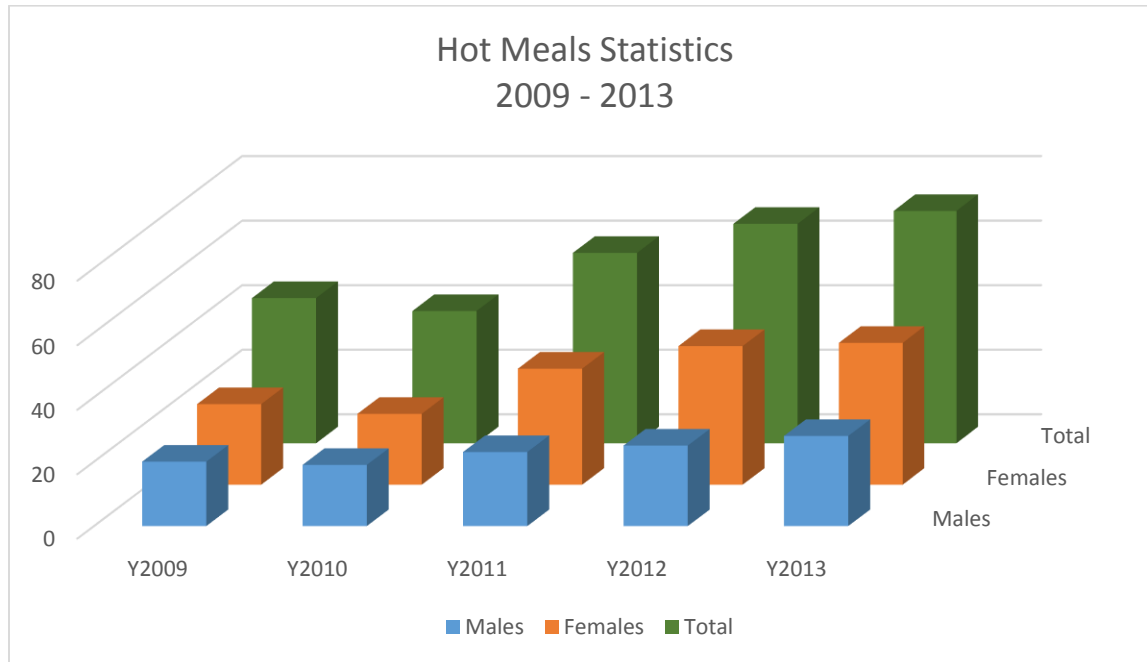
According to the Gender Affairs Division, the data provided shows the various parishes across the island where a number of individuals are part of the feeding programme.

In 2010, a total of 3 persons who resided at the hospital were part of the feeding programme that year. In addition, the adjoining table interprets that between 2009 and 2013, an overall total of 304 persons were recorded as part of the programme.

By the end of 2013, there were 72 person when compared to the end of 2009 with 45 persons, an increase of 27 persons or 60%.

Year	Parish	Male	Female	Total No of Persons
2009	St Pauls	3	5	8
	St Thomas	2	1	3
	St Johns	5	3	8
	St James	8	8	16
	St George	2	8	10
<b>Total</b>		<b>20</b>	<b>25</b>	<b>45</b>
2010	St Pauls	-	-	-
	St Thomas	6	0	6
	St. Johns	4	5	9
	St. James	6	7	13
	St. George	3	10	13
<b>Total</b>		<b>19</b>	<b>22</b>	<b>41</b>
2011	St. Pauls	3	2	5
	St Thomas	6	12	18
	St Johns	4	6	10
	St James	7	7	14
	St George	3	9	12
<b>Total</b>		<b>23</b>	<b>36</b>	<b>59</b>
2012	St Pauls	5	8	13
	St Thomas	3	4	7
	St Johns	8	12	20
	St James	6	8	14
	St George	3	11	14
<b>Total</b>		<b>25</b>	<b>43</b>	<b>68</b>
2013	St Pauls	9	11	20
	St Thomas	5	3	8
	St Johns	6	9	15
	St James	6	10	16
	St George	2	11	13
<b>Total</b>		<b>28</b>	<b>44</b>	<b>72</b>

The graph below shows Hot Meals served to elderly persons of the Nevisian community in all five (5) parishes. It also shows that the service rendered signals that females are living longer than males; in that more females were served than males with the highest number of meals served in the year 2013 of **72** meals.



## Section VII



### **F***inance*

- ∞ NIA Actual Revenue and Expenditure
- ∞ Revenue and Expenditure Analysis
- ∞ Revenue collected by Inland Revenue Department & Customs Department
- ∞ New Companies Registered (NBCO, LLC, Trusts & Foundation)
- ∞ Active Entities in Nevis
- ∞ Companies Registered in Nevis (exclude NBCO, LLC, Trusts & Foundation)
- ∞ SKB/NEV GDP by Economic Activity in Current & Constant Prices

## Finance

### NIA Revenue & Expenditure.

The below table represents the actual revenue and expenditure, be it current or capital for the Nevis Island Administration in relation to its financial standing.

	Actual 2009	Actual 2010	Actual 2011	Actual 2012	Actual 2013
<b>Current Revenue</b>	90,065,869	93,988,428	119,585,846	116,514,870	121,055,560
<b>Current Expenditure</b>	117,327,499	143,847,104	136,052,429	126,131,653	125,250,230
<b>Capital Revenue</b>	18,450,101	74,475,547	34,719,183	19,141,026	13,314,836
<b>Capital Expenditure</b>	20,744,236	23,576,225	38,296,272	17,681,686	9,634,700

*Source: Ministry of Finance, Nevis*

Over the years under review, the island has seen a steady increase in its current revenue. By the end of 2013, the current revenue stood at over \$121 million, an increase of some 34% when compared to the current revenue at the end of 2009.

Even though current expenditure shows a slight dip at the end of 2013 by \$881,423 compared to the end of 2012, where the actual current expenditure was \$126,131,653, it shows a vast difference when compared to 2010, where the current expenditure stood at \$143,847,104.

Capital expenditure stood at \$9,634,700 at the end of 2013 following a constant increase between 2010 and 2012. At the end of 2012, the expenditure was \$17,681,686 a decrease of \$20,614,586 from 2011; \$5,894,539 from 2010 and \$11,109,536 to 2013.

Table. VII.2: Revenue and Expenditure Analysis in Nevis, 2009 – 2013

Items	2009 Actual EC\$(000's)	2010 Actual EC\$(000's)	2011R Actual EC\$(000's)	2012 Actual EC\$(000's)	2013 Actual EC\$(000's)
<b>Sources of Revenue</b>					
Reg. of Offshore Cos.& Trust	11,056	11,217	11,420	11,657	12,518
Annual Fees	7,758	6,226	7,834	7,773	8,324
Consumption Tax	16,026	13,887	388	217	297
Import Duties	7,609	8,040	9,715	8,716	9,625
Hotel Room & Restaurant Tax	1,615	1,564	838.40	13	0
Other	45,428	52,099	89,447	99,655	98,564
<b>Total Recurrent Revenue</b>	<b>89,492</b>	<b>93,033</b>	<b>119,642</b>	<b>128,031</b>	<b>129,328</b>
<b>Application of Revenue</b>					
Personal Emoluments	32,989	38,253	36,834	37,412	40,362
Wages	15,081	14,712	18,449	18,702	20,082
Retiring Benefits	6,820	4,500	6,130	7,631	7,943
Insurance	808	700	0	0	0
Loan Repayment	9,232	32,367	25,697	9,349	10,685
Interest Payment	17,203	17,505	22,054	21,803	18,058
<b>Total non-discretionary Expenses</b>	<b>82,133</b>	<b>108,037</b>	<b>109,164</b>	<b>94,897</b>	<b>97,130</b>
Other	33,254	15,243	1,191	21,886	17,435
<b>Total Recurrent Expenditure</b>	<b>115,387</b>	<b>123,280</b>	<b>110,355</b>	<b>116,783</b>	<b>114,565</b>
<b>Recurrent Surplus/(deficit)</b>	<b>-25,895</b>	<b>-30,247</b>	<b>9,287</b>	<b>11,248</b>	<b>14,763</b>
Total Capital Expenditure	35,696	37,717	38,296	51,801	24,192
<b>Total Expenditure</b>	<b>151,083</b>	<b>160,997</b>	<b>148,651</b>	<b>168,584</b>	<b>138,757</b>
Capital Revenue	20,446	19,392	34,719	34,566	3,874
<b>Total Revenue</b>	<b>109,938</b>	<b>112,425</b>	<b>154,361</b>	<b>162,597</b>	<b>133,202</b>
<b>Total Surplus/(Deficit)</b>	<b>-41,145</b>	<b>-48,572</b>	<b>5,710</b>	<b>-5,987</b>	<b>-5,555</b>
Debt Service/Recurrent Revenue (%)	29.5	53.6	39.6	24.3	22.2
Debt Service/Recurrent Expenditure (%)	29.5	40.5	43.3	26.7	25.1
SKN GDP Growth % Current Prices					
SKN GDP Growth Constant Prices					
Recurrent Revenue Growth (%)	-20.1	-4.0	-28.6	-7.0	-1.0
Recurrent Expenditure Growth (%)	-1.7	-6.8	10.5	-5.8	1.9
Capital Expenditure Growth (%)	-40.7	-5.7	-1.5	-35.3	53.3
Increment in Personal Emoluments (%)	3.39	-16.0	3.7	-1.6	-7.9
Increment In Wages (%)	1.9	2.45	-25.40	-1.37	-7.4
Increment Retiring Benefits (%)	18.1	34.0	-36.2	-24.5	-4.1
Non-Discretionary/Recurrent Exp. (%)	71.2	87.6	98.9	81.3	84.8
Non-Discretionary/Total Exp.(%)	54.4	67.1	73.4	56.3	70.0
Non-Discretionary/ Recurrent Rev (%)	91.8	116.1	91.2	74.1	75.1
PE & Wages/Recurrent Expenditure	41.7	43.0	50.1	48.0	52.8
PE & Wages/Recurrent Revenue	53.7	57	46	44	47

Source: The Ministry of Finance, Nevis (Figures are revised)



## The Inland Revenue Department.

The Inland Revenue Department is the entity responsible for collecting taxes due and payable as part of living conditions. Table VII.3 displays statistics which were solely collected by the Inland Revenue Department. These type of taxes are chosen to meet official statistics system criteria and to allow robust analysis. Between 2009 and 2013, a total of \$218,120,210.70 was collected from various types of taxes, an approximate average of \$43,624,042 per year. Although there was an increase at the end of 2013 by some 55.85% when compared to the end of 2009, the total revenue collected at December 31, 2013 was \$2,803,109 less than the previous year.

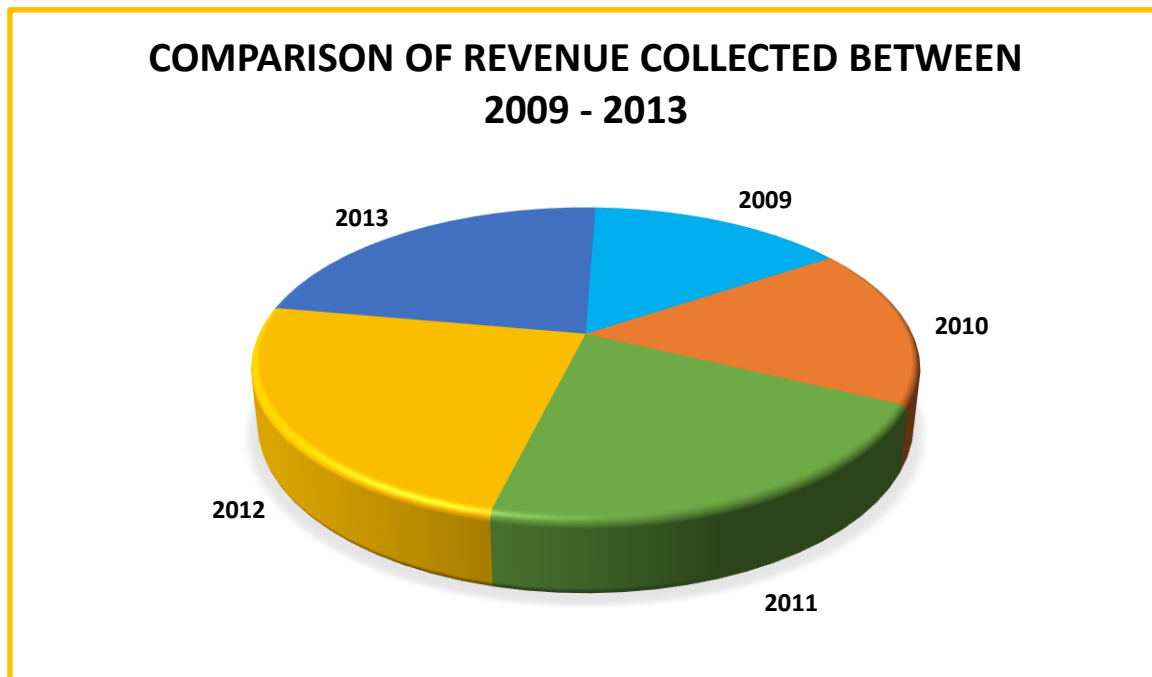
**Table VII.3. Inland Revenue – Taxes collected by tax type in Nevis, 2009 – 2013**

Type of Taxes	2009	2010	2011	2012	2013
Algorithm Nevis	0	150.00	0	0	0
Bank Licence	120,000.00	120,000.00	120,000.00	104,000.00	106,000.00
Boat Licence	0	200.00	388,861.05	0	0
Bus. & Occup Licence	430,931.97	443,989.74	0	448,670.04	476,473.51
Cable Tv Tax	226,565.64	206,250.2	0	0	0
Coastal Levy	37,688.56	5,000.00	101,313.32	188,565.31	296,826.58
Consumption Tax	490,808.08	442,614.65	26,954.76	14,989.54	8,703.79
Corporate Income Tax	5,150,636.62	4,686,482.41	4,835,770.62	5,348,218.32	3,094,229.32
Dog Licence	455.00	325.00	277.50	0	0
Driver Licence	289,780.57	323,806.80	316,314.87	339,190.00	357,100.00
Electricians License	0	0	0	34,319.50	2,788.00
Hotel & Restaurant Tax	1,616,322.23	1,663,419.84	838.40	13,342.38	0
Insurance Prem. Tax	247,533.99	271,083.49	341,293.40	350,640.26	636,418.50
IRD fines	0	0	0	0	125.00
Licence - Unclassified	30,420.84	110,794.94	345,921.39	139,442.12	610,736.17
Liquor Licence	63,279.75	62,498.02	65,242.55	57,706.00	53,413.50
Proceeds of Lotto	216,466.25	235,865.28	0	0	0
Property Tax	1,128,973.21	1,719,475.09	2,167,716.04	2,294,491.18	2,423,393.96
Property Tax - Cards	736,490.14	157,018.38	7,922.25	0	0
Radio Licence	2,500.00	2,500.00	0	0	0
Social Serv. Levy- Nv	0	0	0	0	6,950,457.69
Social Services Levy	7,758,178.35	6,188,462.98	7,833,799.35	7,773,405.79	1,373,658.86
Stamp Duty	0	50.60	0	0	0
Stamp Duty (Bank Cheque)	20,730.19	21,283.51	21,113.75	18,030.99	15,178.60
Stamp Duty Probate		4,292.50	7,531.74	0	0
Stamp Duty Unclassified		8,123,039.94	1,001,982.03	4,086,201.03	1,756,906.88
Stamp Duty (Transfer)		7,265,958.22	11,535,400.73	12,393,351.19	10,525,649.52
Telecom Licence		0	0	0	0

Type of Taxes cont'd	2009	2010	2011	2012	2013
Temp Driver Licence	121,874.49	101,933.47	112,550.00	123,935.00	113,812.50
Temp Liquor Licence	9,797.50	7,520.00	8,820.00	5,200.00	8,440.00
Tourism Dev. Levy	462,109.31	474,462.67	245.61	814,747.83	2,195,351.21
Trader Tax	321,396.28	297,023.67	451,436.16	11,794.54	12,458.13
Travel Tax	388,552.73	386,719.72	387,607.02	357,186.78	285,649.94
Travel Tax (Unclassified)	16,514.95	4,508.08	6,865.74	38,181.28	968.00
Unclassified Fees	0	0	0	25	0
Unincorp. Bus (Ret)	0	23,384.60	551,106.41	468,428.49	494,419.07
Unicorp. Bus. (Ser)	0	9,286.69	403,528.58	476,789.83	446,673.08
Value Added Tax	0	719,194.95	14,034,195.68	14,621,952.33	15,478,708.64
Vehicle Rental Levy	98,545.21	88,463.79	568.21	0	0
Wheel Tax	2,182,285.64	2,033,841.82	1,978,066.41	1,926,855.51	1,942,454.47
Withholding Tax	333,413.71	192,904.49	399,880.90	121,569.15	101,125.05
<b>TOTAL</b>	<b>31,933,821.33</b>	<b>36,393,805.54</b>	<b>47,453,234.47</b>	<b>52,571,229.39</b>	<b>49,768,119.97</b>

Source: Nevis Inland Revenue Department

The following chart displays that of the total revenue collected by the Department over the five year period, 24% was contributed to the year 2012 which was the largest percentage for the period. In 2009 the revenue collected was about 15% of the total. Value Added Tax contributed \$44,854,052 between 2010 and 2013 of the total tax collected between 2009 and 2013



## The Customs Department.

The Customs Department, has always provided the Nevis Island Government with an efficient revenue collection service, as the duties and taxes collected have become a significant source of revenue for the island. The table below represents a breakdown of taxes collected between 2009 and 2013. Customs Service Charge and Customs Duty are the areas that significantly contribute to the income. A total of \$75,709,404.26 was collected from customs service charge and customs duty within the time period 2009 - 2013. Consumption Tax shows a trend of income declining over the years. At the end of 2009, it was revealed that the amount collected for Consumption was \$15,457,805.58 while \$66,918.80 was collected at the end of 2013.

**Table VII.4. Revenue collected by the Customs & Excise Department, Nevis 2009–2013**

Revenue Collected	2009 EC\$('000)	2010 EC\$('000)	2011 EC\$('000)	2012 EC\$('000)	2013 EC\$('000)
Customs Duty	7,482,083.22	7,921,497.38	9,605,564.74	8,713,230.48	10,024,739.11
Excise Tax & Duty	182,219.10	206,949.02	5,087,639.78	3,299,745.38	5,128,930.43
Value Added Tax		2,349,207.10	15,334,656.02	15,562,356.20	17,444,756.76
Consumption Tax	15,457,805.58	13,428,135.76	317,485.59	139,745.88	66,918.80
Alcohol Duty	125,916.96	113,701.35	106,938.28	155,548.69	106,720.07
Environmental Levy	648,350.00	545,639.50	493,970.31	446,952.52	711,564.34
Custom Service Charge	5,622,613.70	6,556,703.42	6,966,710.51	6,424,844.58	6,391,417.12
Unclassified	139,836.88	100,902.36	7,024.36	43,499.89	8,252.00
Custom Fees	73,784.53	47,287.50	50,440.00	54,774.00	62,925.00
Yacht Fees	15,440.00	12,520.00	15,200.00	13,090.00	11,680.00
Fees & Fines	60,408.70	122,000.00	23,516.92	83,500.00	7,500.00
Bottle Levy			46,394.66	51,454.59	169,353.80
<b>TOTAL</b>	<b>29,808,458.67</b>	<b>31,404,543.39</b>	<b>38,055,541.17</b>	<b>34,988,742.21</b>	<b>40,134,757.43</b>

Graph VII.2 below displays a trend of certain taxes being collected over the years that fluctuate from year to year. These taxes are Excise Tax & Duty, Customs Fees, Fees & Fines and Environmental Levy. Statistics shows steady decline for taxes collected between 2009 and 2012 for Environmental Levy and Customs Fees.

At the end of 2012, Environmental Levy declined by some 31% when compared to taxes collected in 2009. On the other hand, Fees and Fines dropped some 88% at the end of 2013 in comparison to taxes collected in 2009. Even thou Custom Fees swayed over the years, when equate 2009 to 2013, it decreased by some 15% or \$10,860.

Graph VII.2: Trend of certain taxes collected in Nevis, 2009 – 2013

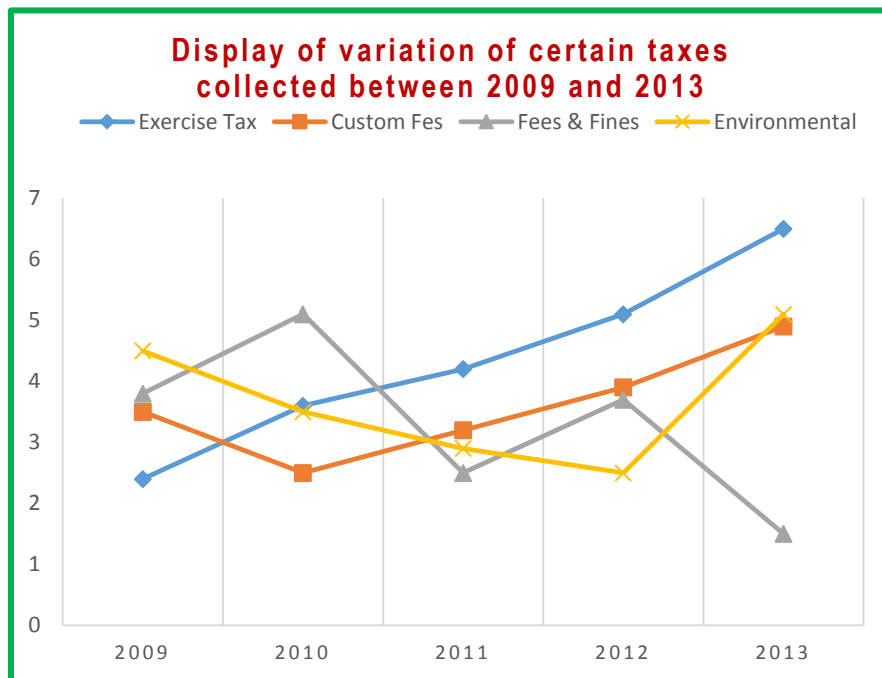
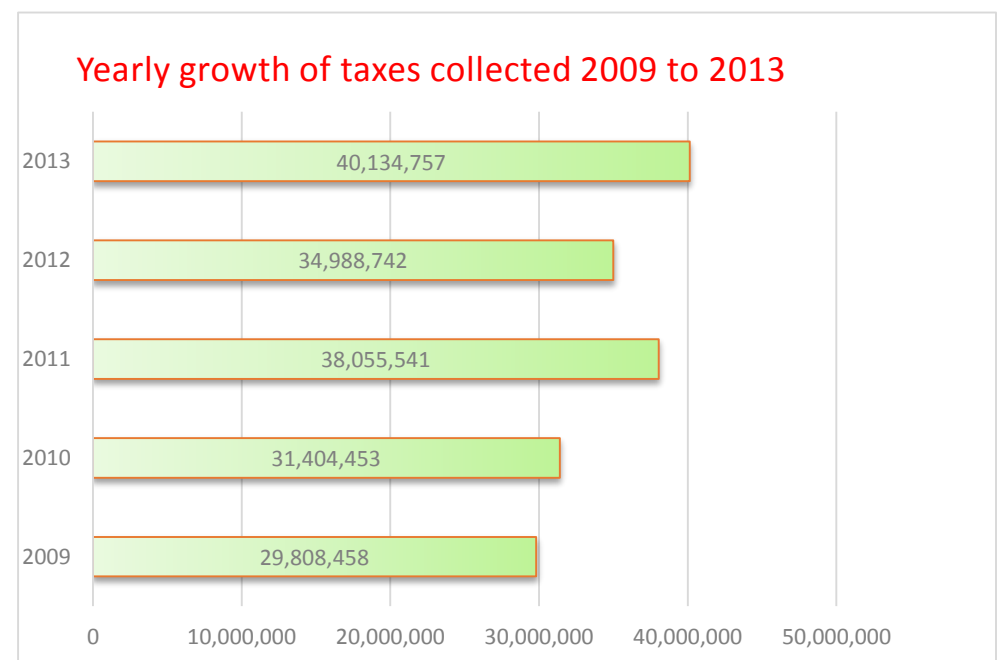


Chart: Taxes collected over the period 2009 – 2013



## The Financial Services:

The Financial Services sector is a vibrant part of Nevis Economy. Over the past five years, tremendous growth occurred in this sector. There were 2,369 new registered companies in 2009 compared to 7,619 in 2013 which shows a 221.6% increase or 5,250 new companies. By the end of 2013, a grand total of 18,064 companies were registered. Table VII.5 below also demonstrates an increase of an average rate of 2,254 in the number of NBCO's registered annually.

**Table VII.5: Number of New Companies (NBCOs, LLCs, Trusts, Foundations) Registered in Nevis, 2009 – 2013**

YEARS	No. of NBCO's	No. of LLC'S	No. of TRUSTS	NO. OF FOUNDATIONS	TOTAL
2009	1,457	755	135	22	2,369
2010	1,492	846	167	16	2,521
2011	1,569	997	153	17	2,736
2012	1,573	1,110	113	23	2,819
2013	5,181	1,930	474	34	7,619
<b>TOTAL</b>	<b>11,272</b>	<b>5,638</b>	<b>1,042</b>	<b>112</b>	<b>18,064</b>

Source: *Nevis Financial Services*

**Table. VII.6 Number of Active Entities in Nevis between 2009 and 2013**

Years	No. of NBCO's	No. of LLC'S	No. of TRUSTS	NO. Of FOUNDATIONS	Offshore Bank	Total
2009	11,823	4,523	1,039	85	1	17,470
2010	11,538	4,261	1,063	86	1	16,949
2011	11,366	4,449	1,064	92	1	16,971
2012	11,590	4,938	1,022	92	1	17,642
2013	11,628	5,086	877	97	1	17,688

Source: *Nevis Financial Services*

As the only active offshore banking institution on the island (the Bank of Nevis International, a subsidiary of the Bank of Nevis) over the period under review, the island has seen a steady growth of the banking institution. Accordingly, reports indicated that a net profit of EC\$6.6 million, compared to EC\$0.6 million (restated) in 2012, an increase of EC\$6.0 million, was declared at the Bank's Annual General Meeting 2014. ([www.thebankofnevis.com](http://www.thebankofnevis.com)). In addition, there were 11,628 active NBCO's by the end of 2013 a slight decrease of 195 or -1.65% when compared to the end of 2009 with 11,823 active NBCSOs. (See table VII.6)

Over the five year period, when analyzed, it indicated a gradual increase in the total revenue collected from \$11,025,465 in 2009 to \$12,678,549.91 in 2013, signifying an increase of some 15% or \$1,652,904.91. The table below indicates the amount of revenue collected from Nevis Financial Services for that said period 2009 – 2013 on a quarterly basis. In addition, the highest recorded quarterly revenue was June 2013, with \$3,477,350.55.

**Table VII.7. Revenue collected Quarterly by the Nevis Financial Services Sector, 2009 – 2013**

Month per 1/4	2009 EC\$(000)	2010 EC\$(000)	2011 EC\$(000)	2012 EC\$(000)	2013 EC\$(000)
March	3,073,483	3,167,392	3,111,153.50	3,313,692.16	3,170,457.78
June	2,801,143	2,717,532	2,897,804.90	2,718,012.71	3,477,350.55
September	2,392,519	2,310,620	2,497,181.90	2,692,860.47	2,637,869.58
December	2,758,320	3,023,803	2,916,300.30	3,048,039.20	3,392,872.00
Total	11,025,465	11,219,347	11,422,440.60	11,772,604.54	12,678,549.91

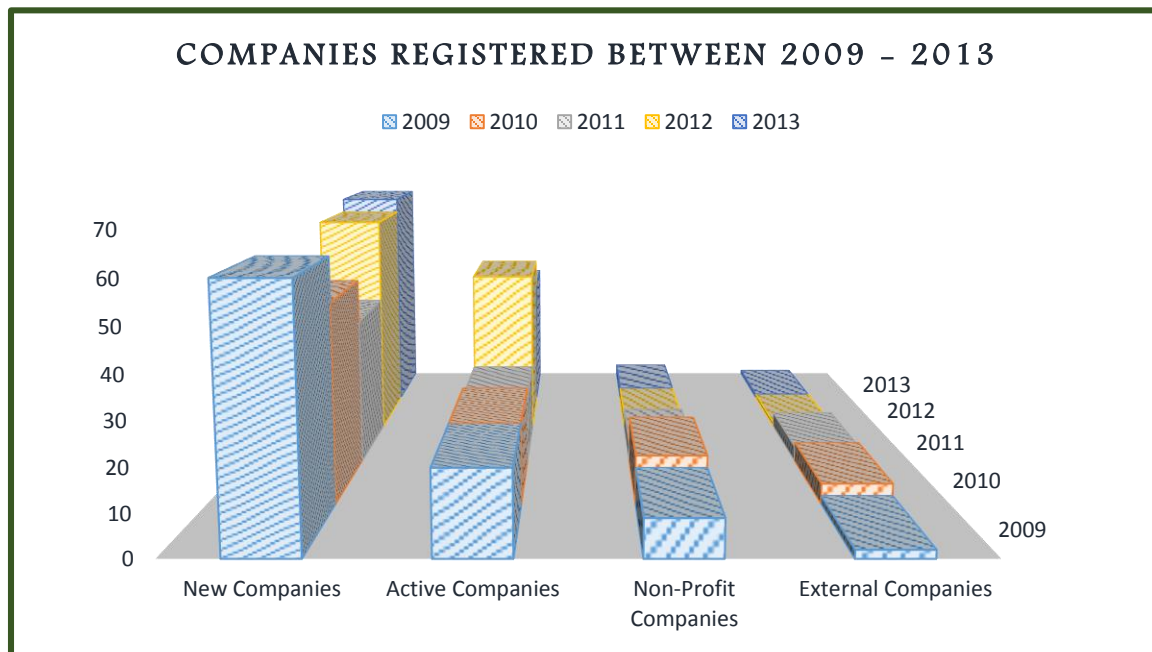
### Company Registry:

According to the figures released by the Company Registry, a total of 458 companies (exclude NBCO, LLC, Trusts and Foundation) were registered over the period under review. Statistics revealed that by the end of 2013, 273 new companies were registered. In addition, by the end of that said year, the record showed there were 140 active companies; 32 non-profit companies and 13 external companies.

**Table. VII.8. Number of Companies (non LLCs, NBCOs, Trusts, Foundations) Registered, 2009 – 2013**

Status	2009	2010	2011	2012	2013	Total
New	60	49	38	61	65	273
Active	20	20	18	45	37	140
Non-Profit	9	12	5	3	3	32
External	2	5	4	1	1	13
Total	91	86	65	110	106	458

*Source: Company Registry, NIA*



## St. Kitts and Nevis Gross Domestic Product:

Table.VII.9. St. Kitts and Nevis Gross Domestic Product by Economic Activity at Basic Current Prices 2009–2013 (EC\$ mill)

<b>INDUSTRIES</b>	<b>2009 Estimate</b>	<b>2010 Prelim</b>	<b>2011 Prelim Est</b>	<b>2012 Prelim Est</b>	<b>2013 Prelim Est</b>
<b>Agriculture</b>	<b>15.86</b>	<b>18.80</b>	<b>19.54</b>	<b>18.04</b>	<b>20.50</b>
Crops	9.18	11.49	12.26	11.35	13.65
Sugar	0.00	0.00	0.00	0.00	0.00
Other Crops	9.18	11.49	12.26	11.35	13.65
Livestock	6.12	6.74	6.70	6.11	6.26
Forestry	0.56	0.57	0.57	0.58	0.59
<b>Fishing</b>	<b>7.60</b>	<b>7.87</b>	<b>9.69</b>	<b>9.13</b>	<b>9.07</b>
<b>Mining &amp; Quarrying</b>	<b>3.07</b>	<b>2.25</b>	<b>1.44</b>	<b>1.44</b>	<b>2.37</b>
<b>Manufacturing</b>	<b>150.64</b>	<b>173.78</b>	<b>186.40</b>	<b>213.46</b>	<b>195.33</b>
Sugar					
Other	150.64	173.78	186.40	213.46	195.33
<b>Electricity &amp; Water</b>	<b>25.41</b>	<b>26.13</b>	<b>26.23</b>	<b>30.09</b>	<b>29.78</b>
Electricity	16.23	16.85	17.76	17.95	17.78
Water	9.18	9.28	8.47	12.13	11.99
<b>Construction</b>	<b>277.57</b>	<b>235.25</b>	<b>217.63</b>	<b>195.81</b>	<b>225.11</b>
<b>Wholesale &amp; Retail Trade</b>	<b>138.85</b>	<b>138.89</b>	<b>135.80</b>	<b>142.89</b>	<b>151.58</b>
<b>Hotels &amp; Restaurants</b>	<b>85.24</b>	<b>96.57</b>	<b>102.83</b>	<b>105.72</b>	<b>110.66</b>
Hotels	82.34	93.08	98.98	101.77	106.52
Restaurants	2.90	3.50	3.85	3.95	4.13
<b>Transportation, Storage and Communications</b>	<b>186.23</b>	<b>203.75</b>	<b>224.18</b>	<b>224.09</b>	<b>235.06</b>
<b>Transportation and Storage</b>	<b>107.58</b>	<b>118.61</b>	<b>137.47</b>	<b>137.00</b>	<b>147.23</b>
Road					
Sea					
Air	64.00	73.92	85.48	89.46	98.94
Supporting and auxiliary transportation activities	41.97	42.92	50.18	45.59	46.31
<b>Communications</b>	<b>78.65</b>	<b>85.14</b>	<b>86.70</b>	<b>87.10</b>	<b>87.83</b>
Post Office	2.57	1.76	1.90	3.15	3.30
Courier Services	0.02	0.02	0.02	0.02	0.02
Telecommunications	76.06	83.36	84.79	83.93	84.52



<b>Financial Intermediation</b>	<b>204.02</b>	<b>126.11</b>	<b>120.61</b>	<b>113.82</b>	<b>117.42</b>
Banks & Other Financial Institutions	134.43	81.23	75.79	70.30	72.44
Insurance and pension funding	28.48	23.74	23.98	24.20	25.05
Activities Auxiliary to Financial Intermediation	41.11	21.14	20.84	19.33	19.92
<b>Real Estate, Renting and Business Activities</b>	<b>284.19</b>	<b>290.35</b>	<b>285.07</b>	<b>283.80</b>	<b>297.18</b>
Owner Occupied Dwellings	121.89	124.49	126.47	128.13	132.68
Real estate activities	104.75	110.68	114.95	117.20	121.37
Renting of machinery and equipment	2.99	3.95	2.64	2.24	2.32
Computer and related activities	21.04	17.75	6.33	4.92	5.82
Business Services	33.51	33.48	34.69	31.32	35.00
<b>Public Administration, Defence &amp; Compulsory Social Security</b>	<b>148.30</b>	<b>153.12</b>	<b>163.19</b>	<b>166.25</b>	<b>185.95</b>
<b>Education</b>	<b>85.67</b>	<b>90.49</b>	<b>90.09</b>	<b>91.19</b>	<b>102.81</b>
Public	60.73	59.67	60.43	61.10	68.34
Private	24.94	30.82	29.66	30.10	34.47
<b>Health and Social Work</b>	<b>46.68</b>	<b>43.65</b>	<b>45.10</b>	<b>45.72</b>	<b>51.97</b>
Public	35.27	33.76	33.97	34.22	38.27
Private	11.41	9.88	11.12	11.50	13.70
<b>Other community, social &amp; personal services</b>	<b>46.96</b>	<b>43.61</b>	<b>45.41</b>	<b>46.28</b>	<b>50.34</b>
Public	3.23	2.54	2.58	4.36	4.88
Private	43.73	41.08	42.83	41.92	45.46
<b>Private Households with Employed Persons</b>	<b>5.95</b>	<b>5.27</b>	<b>5.55</b>	<b>5.29</b>	<b>5.73</b>
<b>Less FISIM</b>	<b>24.52</b>	<b>17.50</b>	<b>16.74</b>	<b>16.02</b>	<b>15.75</b>
<b>Gross Value Added at Basic Prices</b>	<b>1,687.73</b>	<b>1,638.39</b>	<b>1,662.01</b>	<b>1,677.02</b>	<b>1,775.07</b>
<b>GROWTH RATE</b>	<b>-1.64</b>	<b>-2.92</b>	<b>1.44</b>	<b>0.90</b>	<b>5.85</b>
<b>Taxes on products</b>	<b>288.33</b>	<b>231.24</b>	<b>303.75</b>	<b>298.74</b>	<b>316.18</b>
<b>Less Subsidies</b>	<b>2.06</b>	<b>0.00</b>	<b>-</b>	<b>-</b>	<b>-</b>
<b>GDP at Market Prices</b>	<b>1,914.01</b>	<b>1,869.63</b>	<b>1,965.75</b>	<b>1,975.76</b>	<b>2,091.26</b>
<b>GROWTH RATE</b>	<b>-3.51</b>	<b>-2.32</b>	<b>5.14</b>	<b>0.51</b>	<b>5.85</b>

Table.VII. 9. St. Kitts and Nevis Gross Domestic Product by Economic Activity at Basic Constant  
Prices 2009–2013 (EC\$ mill)

INDUSTRIES	2009	2010	2011	2012	2013 proj
			Prelim Estimate		
Primary Activities	-10.61	2.42	11.40	-9.39	6.40
Agriculture	-8.59	3.68	0.81	-4.97	12.23
Crops	-6.89	8.06	1.92	-2.61	19.08
Sugar					
Other Crops	-6.89	8.06	1.92	-2.61	19.08
Livestock	-10.88	-2.23	-0.91	-9.09	1.41
Forestry	-8.05	1.00	1.00	1.00	1.50
Fishing	-14.22	0.02	32.34	-16.06	-3.53
Secondary Activities	-11.52	-10.61	-6.44	-3.49	3.14
Mining & Quarrying	51.27	-26.87	-35.47	1.72	61.88
Manufacturing	-2.09	-8.59	-3.08	10.17	-10.73
Sugar					
Other	-2.09	-8.59	-3.08	10.17	-10.73
Electricity & Water	6.71	-1.48	4.19	-6.18	-1.99
Electricity	1.85	5.48	2.54	-2.03	-1.99
Water	14.81	-11.78	7.10	-13.20	-2.14
Construction	-17.02	-12.25	-8.94	-10.26	12.16
Services related Activities	-0.42	-1.36	-0.49	0.21	3.78
Wholesale & Retail Trade	-6.10	-0.57	-8.74	3.77	5.03
Hotels & Restaurants	-26.77	5.38	3.31	2.43	3.63
Hotels	-27.11	5.64	3.43	2.50	3.63
Restaurants	-14.41	-2.50	-0.45	0.18	3.63
Transportation, Storage and Communications	2.03	6.99	1.43	-2.06	3.02
Transportation and Storage	-3.36	5.15	1.26	-3.16	6.16
Road	-3.53	5.18	-2.78	1.08	9.50
Sea	-16.01	-8.93	9.96	-1.96	0.41
Air	-0.25	17.12	5.66	11.09	0.81
Supporting and auxiliary transportation activities	-2.60	5.42	7.98	-10.07	0.57
Communications	8.58	8.98	1.60	-0.92	-0.17
Post Office	1.05	0.00	2.08	1.02	3.75

Courier Services	-20.93	-20.59	-18.52	-8.69	-3.58
Telecommunications	9.26	9.59	1.71	-0.95	-0.30
<b>Financial Intermediation</b>	<b>3.11</b>	<b>-20.17</b>	<b>-1.34</b>	<b>-0.33</b>	<b>2.11</b>
Banks & Other Financial Institutions	0.32	-20.68	1.15	0.44	2.03
Insurance and pension funding	-1.64	-1.87	0.30	0.07	2.50
Activities Auxiliary to Financial Intermediation	18.57	-30.28	-12.91	-4.36	2.03
<b>Real Estate, Renting and Business Activities</b>	<b>2.89</b>	<b>3.08</b>	<b>-2.87</b>	<b>-0.75</b>	<b>3.13</b>
Owner Occupied Dwellings	3.12	2.14	1.58	1.31	2.02
Real estate activities	8.60	6.58	3.41	1.93	2.02
Renting of machinery and equipment	15.25	14.99	-45.41	-18.42	2.63
Computer and related activities	-20.07	-2.55	-66.38	-18.24	16.66
Business Services	2.38	-2.24	3.17	-13.35	10.10
<b>Public Administration, Defence and Compulsory Social Security</b>	<b>6.51</b>	<b>3.25</b>	<b>6.57</b>	<b>1.88</b>	<b>3.75</b>
<b>Education</b>	<b>5.72</b>	<b>2.24</b>	<b>-1.53</b>	<b>-0.41</b>	<b>6.22</b>
Public	10.95	-1.75	1.27	1.11	3.75
Private	-5.16	11.95	-7.52	-3.97	12.29
<b>Health and Social Work</b>	<b>4.21</b>	<b>-7.16</b>	<b>2.12</b>	<b>1.34</b>	<b>6.96</b>
Public	8.74	-4.27	0.63	0.73	3.75
Private	-7.98	-16.14	7.43	3.38	17.34
<b>Other community, social &amp; personal services</b>	<b>4.32</b>	<b>-8.13</b>	<b>-1.32</b>	<b>1.22</b>	<b>7.03</b>
Public	0.93	-21.49	1.67	69.15	3.75
Private	4.58	-7.18	-1.50	-3.02	7.38
<b>Private Households with Employed Persons</b>	<b>-2.60</b>	<b>-6.05</b>	<b>9.49</b>	<b>-8.22</b>	<b>7.29</b>
<b>Less FISIM</b>	<b>4.63</b>	<b>5.65</b>	<b>6.14</b>	<b>3.51</b>	<b>-2.66</b>
<b>GROWTH RATE</b>	<b>(3.77)</b>	<b>(3.83)</b>	<b>(1.88)</b>	<b>(0.86)</b>	<b>3.81</b>

Source: St. Kitts Nevis Statistics Department/ECCB

## Section VIII



## **E**ducation

- ∩ Number of Public & Private Primary & Secondary Schools
- ∩ Number of Students and Teachers (private & public)
- ∩ General Information on Nurseries and Pre-Schools
- ∩ CXC Subject Passes – Charlestown & Gingerland Secondary
- ∩ Enrollment at Sixth Form College
- ∩ CAPE Grade Distribution at Sixth Form College

## Education

It was once said that education is the foundation on which every society ought to build productive and prosperous people. To this end, the Ministry of Education continues to boast of the island high literacy rate. This can be attributed to the fact that over the last five years, Nevis captured the State Scholar position back to back, during the years 2009 and 2010.

The State Scholar position is given to the top student within the Federation of St. Kitts and Nevis who returns the best result of any given year for CAPE Examination Level. In 2009, Ms Sasha Godet received the accolade while in 2010 it was Ms Joanne Flemming. Both students attended the Sixth Form College in Nevis.

The indicator in this section measures aspects of the primary and secondary education on the island of Nevis. The indicator examines school enrollment of students and teachers; and students' progress as it relates to the number of passes for CSEC and CAPE Examinations.

Recently renamed, the Cecele Browne Integrated School, the Special Education Unit is the only all age school on the island of Nevis which caters for children ages 5 to 16 with special needs. Data revealed that between 2009 and 2014, the island continue to accommodate 10 primary schools, (7 public and 3 private), and 3 secondary schools, (2 public and 1 private).

**Table VIII.1: Number of Public and Private Primary Schools, in Nevis, 2008/09 – 2012/13**

	2008/2009	2009/2010	2010/2011	2011/2012	2012/2013
<b>Primary Public and Private School</b>					
Public	7	7	7	7	7
Private	3	3	3	3	3
Total	10	10	10	10	10
<b>Secondary Public and Private School</b>					
Public	2	2	2	2	2
Private	1	1	1	1	1
Total	3	3	3	3	3

*Source: Department of Education*

**Table VIII.2. Number of Students and Teachers in Public Primary School, in Nevis 2009/10 – 2012/13**

Year	2009-2010		2010-2011		2011-2012		2012-2013	
	Male	Female	Male	Female	Male	Female	Male	Female
Students	653	654	617	635	606	612	564	585
Teachers	19	112	19	111	21	110	13	93

**Table VIII.3. Number of Students and Teachers in Private Primary School, in Nevis 2009/10 – 2012/13**

Year	2009-2010		2010-2011		2011-2012		2012-2013	
	Male	Female	Male	Female	Male	Female	Male	Female
Students	83	93	77	86	81	80	63	58
Teachers	0	17	0	17	0	18	0	18

**Table VIII.4. Number of Students and Teachers in Public Secondary School, in Nevis 2009/10 – 2012/13**

Year	2009-2010		2010-2011		2011-2012		2012-2013	
	Male	Female	Male	Female	Male	Female	Male	Female
Students	538	502	479	545	484	557	456	567
Teachers	36	82	44	75	37	63	42	87

**Table VIII.5. Number of Students and Teachers in Private Secondary School, in Nevis 2009/10 – 2012/13**

Year	2009-2010		2010-2011		2011-2012		2012-2013	
	Male	Female	Male	Female	Male	Female	Male	Female
Students	15	20	17	15	15	13	15	13
Teachers	1	7	2	9	2	7	2	7

**Table VIII.6. General Info on Pre-schools and Nurseries in Nevis, 2008/09 – 2012/13**

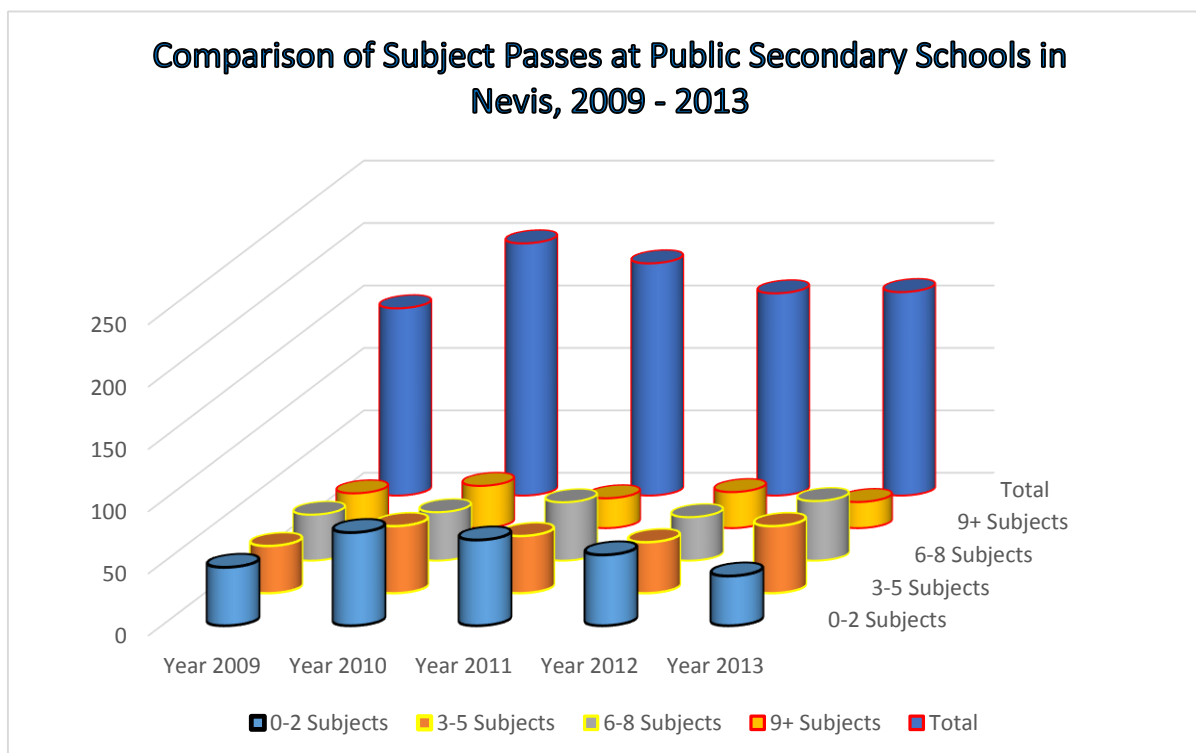
YEAR	2008/ 2009	2009/ 2010	2010/ 2011	2011/ 2012	2012/ 2013
Private Preschool Centers	8	8	7	7	7
Govt. Preschool Centers	3	3	3	3	3
Total Teachers in Preschools & Nurseries	67	52	36	38	40
Children in Private Centers	430	333	304	310	284
Children in Government Centers	154	153	156	168	162
<b>Total Enrollment in Private Centers and Government Centers</b>	<b>584</b>	<b>486</b>	<b>460</b>	<b>478</b>	<b>446</b>

Source: Department of Education

The table below demonstrates the number of CSEC Subject passes for students of the Charlestown and Gingerland Secondary Schools over the period 2009 to 2013. The trend shows a changeability in the number of subject passes for students taking 1-9 subjects or more. By the end of 2013 a grand total of 863 subject passes were attained over a five year period. Of that total, 150 were attained in 2009, 202 in 2010, 186 in 2011, 162 in 2012 and 163 in 2013.

**Table VIII.7. CSEC Subject passes for Charlestown and Gingerland Secondary Schools, 2009 – 2013**

Subject Passes	2009	2010	2011	2012	2013
0 – 2	47	75	69	57	40
3 – 5	38	54	46	41	54
6 – 8	37	39	47	35	48
9+	28	34	24	29	21
<b>TOTAL</b>	<b>150</b>	<b>202</b>	<b>186</b>	<b>162</b>	<b>163</b>



*Source: Department of Education*

Table VIII.8. CAPE Grade Distribution at the Charlestown Sixth Form College in Nevis, 2009 – 2013

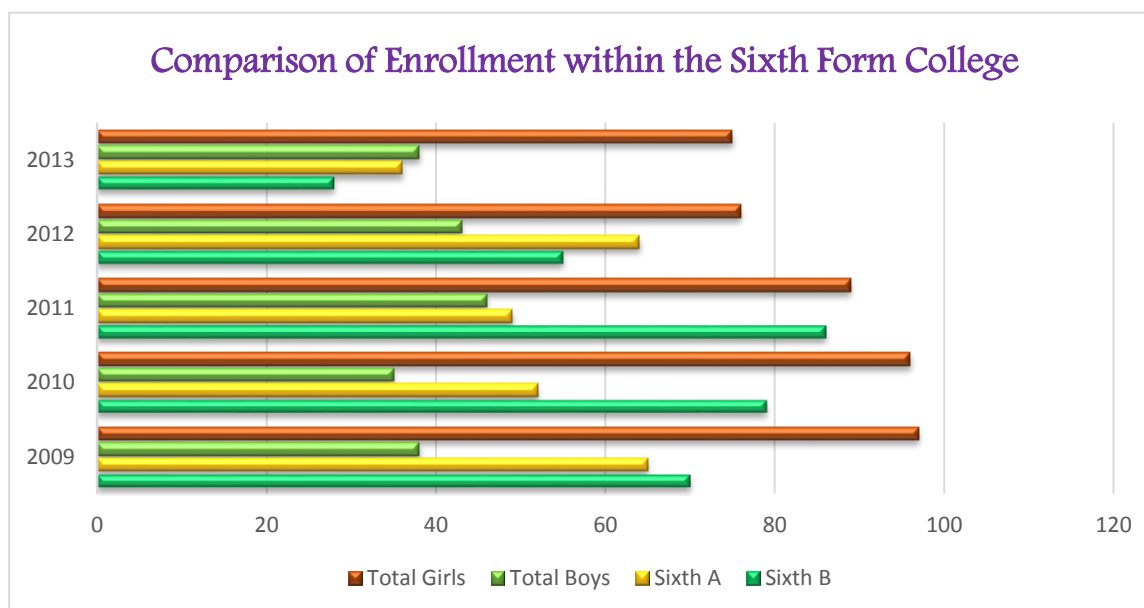
Number of Students					
Grade	2009	2010	2011	2012	2013
I	17	20	6	24	38
II	56	59	47	65	56
III	91	113	68	92	79
IV	148	122	125	118	101
V	159	130	150	139	116
VI	60	72	108	88	75
VII	16	20	30	11	13

*NB: Grades I–V Passing Grades      Grades VI–VII Failing Grades*

Table VIII.9. Enrollment at the Charlestown Secondary Sixth Form College in Nevis, 2009 – 2013

Year	Sixth B		Sixth A		Total	
	Girls	Boys	Girls	Boys	Girls	Boy
2009	47	23	50	15	97	38
2010	61	18	35	17	96	35
2011	51	35	38	11	89	46
2012	40	15	36	28	76	43
2013	49	28	26	10	75	38

*N.B: Figures were taken from the start of the new school term.*



*Source: Charlestown Secondary School, Nevis*



## Section IX



### **E**mployment

- ∂ Employees by Selected Industries and Services
- ∂ Work Permit Application by Sectors
- ∂ Work Permit Application by Nationality (2013)

## Employment

The industries and services on the island continue to battle with the impact of the global recession as activities slowly decline. Between 2009 and 2013, the recorded number of employees dip slightly by approximately 0.45%. One of the largest economic contributors to the economy, the construction industry, saw a decline in employment at the end of 2013 by 46.9% or by 353 when compared to the recorded number of employees in 2009. Nevertheless, the industry showed an increase between 2012 and 2013 by some 92 employees.

**Table IX. 1. Employees by Selected Industries and Services 2009 – 2013**

Industries and Services	2009	2010	2011	2012	2013	Total
Agriculture	73	60	55	57	77	322
Baking	37	37	36	27	27	164
Civil Service	734	755	785	828	829	3,931
Commercial	401	358	370	364	388	1,881
Construction	753	465	413	308	400	2,339
Domestic	175	162	140	144	138	759
Financial	216	277	246	195	232	1,166
Hotel & Guest Houses	789	613	1,028	1,070	1,046	4,546
Manufacturing	88	72	67	56	44	327
NE Workers	608	650	361	728	768	3,115
Restaurants	138	129	145	102	93	607
Services	416	372	476	249	424	1,937
Statutory Corporations	270	273	280	465	267	1,555
Telecommunications	67	60	167	54	20	368
Transportation	79	72	62	53	69	335
<b>TOTAL</b>	<b>4,844</b>	<b>4,355</b>	<b>4,631</b>	<b>4,700</b>	<b>4,822</b>	<b>23,352</b>

*Source: Labour Department, Nevis*

The table (IX.1) also demonstrates that between 2009 and 2013, the Non-Establish sector grew by 160 while the Statutory Corporations industry declined by 198. In addition, the manufacturing sector continues to decline at a rate of 11% per annum.

Over the period under review the issuance and renewal of work permit amounted to 6,643. According to the data received from the Department of Labour, there has been a steady decline in the number of work permit issued. This attributes to a 50.70% decrease by the end of 2013 when compared to the end of 2009 when 1,294 work permit were issued.

**Table IX.2. Work Permit application by Sector 2009 – 2012**

<b>Sector</b>	<b>2009</b>	<b>2010</b>	<b>2011</b>	<b>2012</b>	<b>2013</b>	<b>Total</b>
Agriculture	95	76	81	63	61	376
Baking	10	10	11	7	5	43
Nevis Island Administration	158	148	133	90	69	598
Domestic	59	44	34	33	30	200
Construction	451	301	184	130	87	1,153
Commercial	47	121	53	38	31	290
Financial	14	12	8	7	10	51
Hotel and Guest Houses	81	74	101	81	96	433
Manufacturing	59	41	34	27	7	168
Miscellaneous	2	0	0	0	0	2
Restaurants	59	57	56	53	53	278
Services	236	204	177	158	171	946
Statutory Corporation	16	18	11	9	9	63
Telecommunication	3	2	0	0	0	5
Transportation	4	4	12	10	9	39
<b>TOTAL</b>	<b>1,294</b>	<b>1,112</b>	<b>895</b>	<b>706</b>	<b>638</b>	<b>6,643</b>

*Source: Department of Labour*

Upon analyzing the above table, it shows that the Nevis Island Administration or in particular, the public sector/civil service sector, the application for work permit has decreased at a rate of 22.25% per annum; while hotel and guest houses has increased its application process over the years.

Table IX.3 shows the number of work permit applications by nationality that was issued for the period 2013. Of a total of 638, 322 were from the Caricom/OECS Region with 240 of Guyanese nationality. 83 from the United States of America, 74 from Jamaica, and 48 from India. It is notable that the annual figure provided takes into consideration a percentage of renewals.

**Table IX.3: Work Permit application by Nationality, 2013**

Region	Country	Male	Female	Total
Caricom/OECS	Antillian		1	1
	Anguilla			
	Barbados	1		1
	Dominica			
	Grenada			
	Guyana	162	78	240
	Jamaica	45	29	74
	Montserrat			
	St. Lucia			
	St. Vincent			
	Trinidad	2	4	6
Other Caribbean	Cuba	2		2
	Dominican Republic	16	21	37
	Haiti		1	1
	Surinam	1		1
	Belize			
	Bahamas	1	1	2
Canada	Canada	11	7	18
America	Ecuador	1		1
	Columbia	2		2
	Mexico/Caucasian	2	2	4
	Venezuela	1	3	4
	Honduras		1	1
United States	United States	53	30	83
Europe/CIS	Austria	1		1
	Chile/Peru	1		1
	Denmark			
	France	1		1
	Germany	4		4

**Table IX.3: Work Permit application by Nationality, 2013 con't**

Region	Country	Male	Female	Total
Europe/CIS	Greece	2	1	3
	Ireland			
	Norway	1		1
	Portugal	1		1
	Spain	2		2
	Sweden	1		1
	Switzerland		1	1
United Kingdom	United Kingdom	14	5	19
Africa	Egypt	7		7
	Gambian	1		1
	Kenya	1	3	4
	Nigeria	2	3	5
	South Africa			
Asia	Croatia/Singapore	1	1	2
	China	12	5	17
	India	39	9	48
	Indonesia	8	2	10
Pacific	Italy	1	3	4
	Filipinos	16	9	25
	New Zealand			
	Turkey			
	Malaysia/Thailand		2	2
<b>Total</b>		<b>416</b>	<b>222</b>	<b>636</b>

## Section X



# **A**griculture **P**roduction, **T**rade

- ∂ Egg Production
- ∂ Throughput at the Marketing Division
- ∂ Estimated Landing of Species of Fishes
- ∂ Animal Slaughtered
- ∂ Export of Sea Food
- ∂ Trade (Import value)
- ∂ Rainfall

## Agriculture

Productivity measures are often used to indicate how well a country can use its resources to generate economic growth. Economic growth can be seen as an improvement in living conditions of the populace. Hence, one of the island's economic activity which generates a large percentage of the island's revenue is Agriculture.

The Department of Agriculture is the entity which generates such income from harvested crops as well as the Department of Fisheries which contributes to the foreign revenue.

### Egg Production:

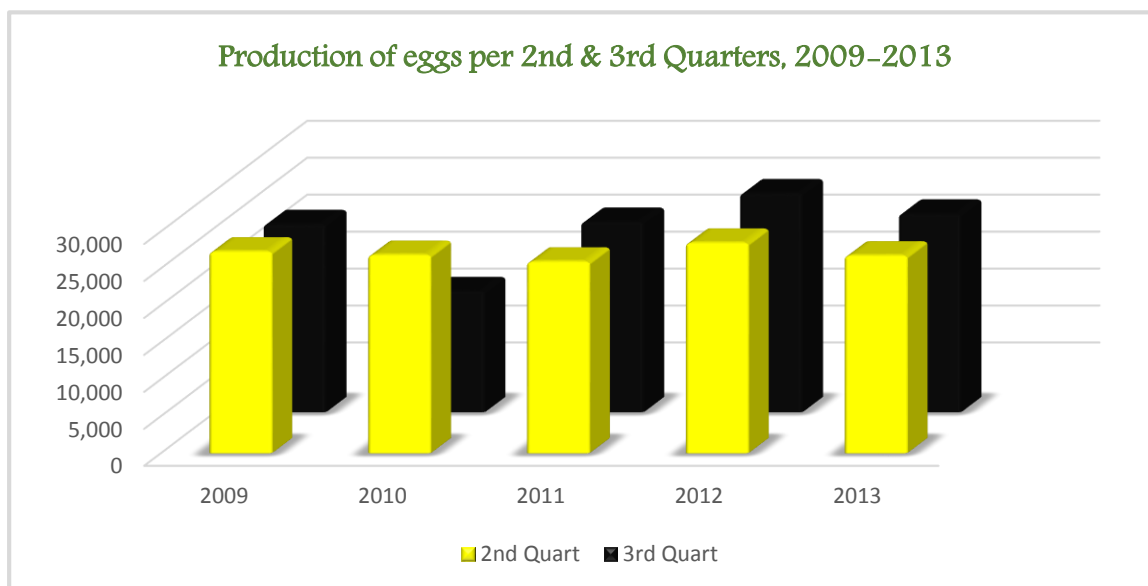
The table on the right forecasts that the consumption of eggs on the island of Nevis has been on a high, as eggs are used for various foods preparation.

The year 2012 was the year that the Department of Agriculture recorded the highest yield of egg production, some 113,915 dozens with the lowest recorded figure in 2011 of 93,146 dozens.

Despite the minor changes in yield of production over the period under review, by the end of 2013, production recorded was 101,964 dozens; approximately 184 more than the end of 2009, which recorded a figure of 101,780 dozens.

Year	Production per Quarter	Total per Dozen
2009	1 <sup>st</sup> Quarter	29,250
	2 <sup>nd</sup> Quarter	27,300
	3 <sup>rd</sup> Quarter	25,450
	4 <sup>th</sup> Quarter	19,780
	<b>Total</b>	<b>101,780</b>
2010	1 <sup>st</sup> Quarter	23,027
	2 <sup>nd</sup> Quarter	26,845
	3 <sup>rd</sup> Quarter	16,380
	4 <sup>th</sup> Quarter	26,894
	<b>Total</b>	<b>93,146</b>
2011	1 <sup>st</sup> Quarter	27,630
	2 <sup>nd</sup> Quarter	25,935
	3 <sup>rd</sup> Quarter	25,760
	4 <sup>th</sup> Quarter	25,300
	<b>Total</b>	<b>104,625</b>
2012	1 <sup>st</sup> Quarter	24,570
	2 <sup>nd</sup> Quarter	28,483
	3 <sup>rd</sup> Quarter	29,624
	4 <sup>th</sup> Quarter	30,938
	<b>Total</b>	<b>113,615</b>
2013	1 <sup>st</sup> Quarter	27,000
	2 <sup>nd</sup> Quarter	26,756
	3 <sup>rd</sup> Quarter	26,864
	4 <sup>th</sup> Quarter	21,344
	<b>Total</b>	<b>101,964</b>
<b>Grand Total</b>		<b>515,130</b>

The chart below shows quartile data over the last five years, with an average of 25,940 dozens of eggs being yield every 2<sup>nd</sup> and 3<sup>rd</sup> quarters. The egg market is supplied by a number of private individuals.



## Marketing Division.

The Marketing Division of the Department of Agriculture is responsible for marketing the department, the farmers' produce and any individual within the general populace who wishes to market their agricultural goods and services.

According to the figures produced by the Marketing Division, an average of 130,068.4kg of harvested crop contributes to the annual growth of the economy. The Division also recorded the ten targeted crops for the past three years (2011-2013) as Cabbage, Cantaloupe/Honey Dew Melon, Carrot, Corn, Onion, Pumpkin, Sweet Potato, Pepper, Tomato and Water Melon.

The following tables, X.2, X.3, X.4 and X.5 will display the throughput at the Marketing Division for the period 2009 to 2013 as well as the production analysis for targeted crops over the said period, (2011 – 2013).



**Table X.2. Throughput at the Marketing Division on an annual basis 2011 – 2013**

Produce	2011	2012	2013
Arugula	0	7.8	0
Apricot	0	0	175
Avocado	18	138	253.5
Broccoli	5	0	0
Basil	13	48.5	157
Bora Beans	24	23	140
Breadfruit	60	448	496
Butternut Squash	1510.5	1946	5496.5
Cabbage	4701	5281	2272
Cauliflower	10	0	0
Cantaloupe	2107.5	2671.5	8679.5
Carrots	1063.5	258	422.5
Cassava	152.5	509	703
Christophene	30	0	0
Cassava Meal	0	0	5
Cherry Tomato	0	165	105
Coconut	0	378	355
Cucumber	6527	9081	733
Dasheen	0	0	12698
Dragon Fruit	0	186	52.5
Eddoes	0	0	48
Eggplant	1171	668	5
Ginger	87	113	2146.5
Grapefruit	0	79	125
Green Banana	1507.5	1738.8	300
Green Papaya	779	736	1892.5
Green Plantain	1482	2673.5	2545
Golden Apple	9	0	0
Guava	189	27.5	469
Guava Pulp	0	15.8	2586
Herbs and Thyme	812	778.5	73.5
Hot Peppers	18	13	55
Honey Dew Melon	1752	3429	474.6
Jelly	0	30	193.8
Jujubi	0	10	5552.5
Lemon Grass	0	40	347
Lettuce	10	0	46
Limes	621	240	768.5
Mangoes	637	1135	518

Table X. 2: Throughput at the Marketing Division on an annual basis 2011 – 2013, con't

Produce	2011	2012	2013
Mint	0	1	1407
Okra	816.5	1483	1
Jumbo Onion	1500	0	0
Regular Onion	2572	0	0
Onion	831	1309	4386
Oranges	0	36	4956.5
Papaya Ripe	334	1151	40
Passion Fruit	73	0	402
Peanut	0	20	92
Pineapple	1739.5	2083.7	16
Pumpkin	7055.5	14286.5	191
Red Pepper	0	8	4020
Ripe Banana	2573	8962.6	10579
Ripe Plantain	708	1710.8	2176
Rosemary	0	1.6	8060
Sapodilla	0	0	1117.5
Seasoning Pepper	325	144.5	1313.3
Silk Banana	114	722	53
Sorrel	1528	234.5	485.5
Sour Orange	1	0	0
Sour Sop	0	30	81
Star Apple	119	73	43
String Beans	682	738	1898.5
Sugar Apple	29	0	0
Sugar Cane	0	43	15
Sweet Corn	123	1754	1602.5
Sweet Pepper	5891.5	3280.4	5158
Sweet Potato	11288	11951	16638.5
Spinach	15	4	123
Tania	262	178	690
Thyme	0	197	253.5
Tomatoes	14953.5	19466.5	21713.5
Watermelon	10428	22304	35308.5
Wax Apple	69	10	8
White Potato	658	80	0
Yams	51	60	349
Zucchini	111.5	138	655
<b>Total</b>	<b>90,147</b>	<b>125,329</b>	<b>174,729.20</b>

Table X.3. PRODUCTION ANALYSIS FOR 2011 OF TARGETED CROPS (KGS)

Crop	Estimated production 1 <sup>st</sup> quarter	Estimated production 2 <sup>nd</sup> quarter	Estimated production 3 <sup>rd</sup> quarter	Estimated Production 4 <sup>th</sup> Quarter	TOTAL ESTIMATED PRODUCTION
Cabbage	3,402	726	590	1,220	5,938
Cantaloupe/Honey Dew	9,592	12,678	10,659	1,985	34,914
Carrot	1,705	2,631	0	1,043	5,379
Corn	1,631	340	0	2,835	4,806
Onion	1,769	272	0	0	2,041
Pumpkin	1,633	8,505	2,800	0	12,938
Sweet pepper	3,583	6,895	4,817	7,276	22,571
Sweet potato	227	0	0	9,221	9,448
Tomato	18,598	16,329	6237	29,889	71,053
Watermelon	13,245	48,217	25,174	16,743	103,379
<b>TOTAL</b>	<b>55,385</b>	<b>96,593</b>	<b>50,277</b>	<b>70,212</b>	<b>272,467</b>

Table X.4. PRODUCTION ANALYSIS FOR 2012 OF TARGETED CROPS (KGS)

Crops	Estimated production 1 <sup>st</sup> quarter	Estimated production 2 <sup>nd</sup> quarter	Estimated production 3 <sup>rd</sup> quarter	Estimated Production 4 <sup>th</sup> Quarter	TOTAL ESTIMATED PRODUCTION
Cabbage	1,438	3,211	1,701	375	6,725
Cantaloupe/Honey Dew	8,165	8,026	6,124	2722	25,037
Carrot	1,134	453	0	1270	2,857
Corn	4,809	8,437	0	750	13,996
Onion	7,711	4,535	0	600	12,846
Pumpkin	5,660	5,669	5,806	5,103	22,238
Sweet pepper	9,811	5,025	4,627	6,895	26,358
Sweet potato	5,737	1,378	8,709	0	15,824
Tomato	17,169	13,586	22,226	16,329	69,310
Watermelon	19,082	33,837	44,225	43,000	140,144
<b>TOTAL</b>	<b>80,716</b>	<b>84,157</b>	<b>93,418</b>	<b>77,044</b>	<b>335,335</b>

Table X.5. PRODUCTION ANALYSIS FOR 2013 OF TARGETED CROPS (KGS)

Crop	Estimated production 1 <sup>st</sup> quarter	Estimated production 2 <sup>nd</sup> quarter	Estimated production 3 <sup>rd</sup> quarter	Estimated Production 4 <sup>th</sup> Quarter	TOTAL ESTIMATED PRODUCTION
Cabbage	1043	227	0	91	1,361
Cantaloupe/Honey Dew	7665	6759	3175	3130	20,729
Carrot	272	363	907	2068	3,610
Corn	1161	2608	54	0	3,823
Onion	3515	2722	2948	0	12,133
Pumpkin	6169	7257	5987	7620	27,033
Sweet pepper	4264	1724	1415	1134	8,537
Sweet potato	3774	499	318	227	4,818
Tomato	29,143	1134	4223	11,906	46,406
Watermelon	17,373	22,453	28,372	2041	70,239
<b>TOTAL</b>	<b>74,379</b>	<b>45,746</b>	<b>47,399</b>	<b>28,217</b>	<b>198,689</b>

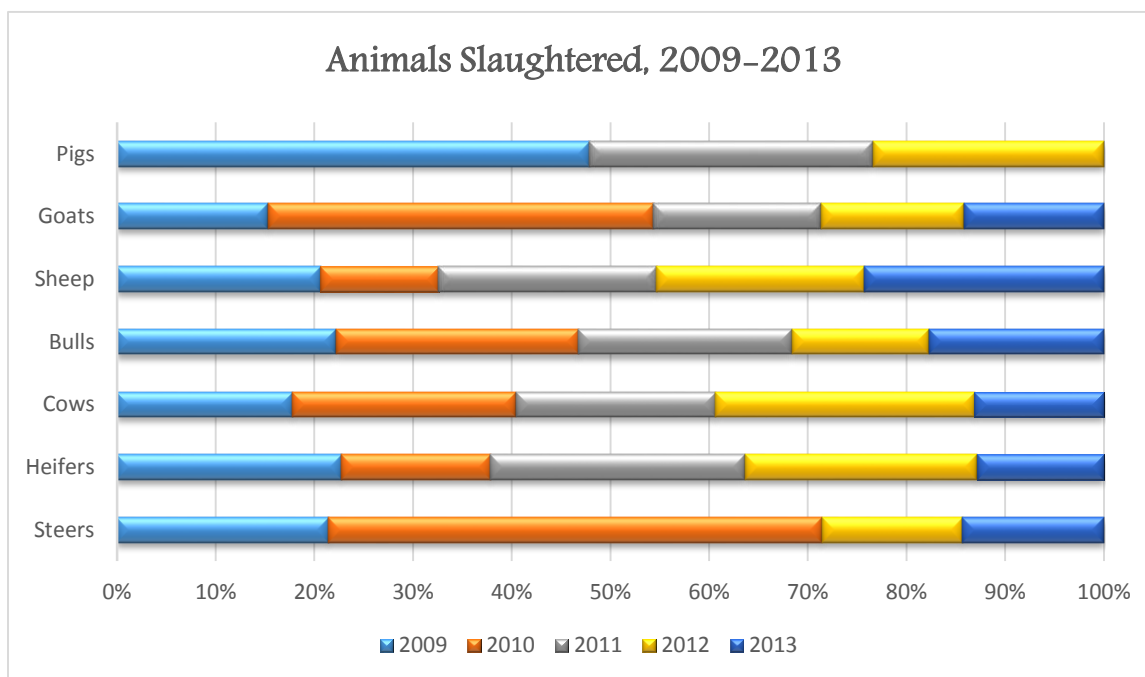
Source: Department of Agriculture

## Animals Slaughtered

The amount of animals slaughtered between 2009 and 2013 has been consistent ranging between 2,682 and 3,597. The top seven animals slaughtered are Steers, Heifers, Cows, Bulls, Sheep, Goats and Pigs, with the slaughtering of pigs the modal animal slaughtered with the highest in 2009 of 1,752 and the lowest in 2012 of 856.

Animals	2009	2010	2011	2012	2013	Total
Steers	3	7	0	2	2	14
Heifers	30	20	34	31	17	132
Cows	65	83	74	96	48	366
Bulls	120	133	117	75	96	541
Sheep	1,065	1,300	1,144	1,090	1,253	5,852
Goats	562	617	623	532	520	2,854
Pigs	1,752	1,433	1,052	856	1,208	6,301
<b>Total</b>	<b>3,597</b>	<b>3,593</b>	<b>3,044</b>	<b>2,682</b>	<b>3,144</b>	<b>16,060</b>

### Comparison of the various animals slaughtered in Nevis, 2009–2013



## Department of Fisheries:

Another Unit within the Ministry of Agriculture is the Department of Fisheries, another one of the island's economic sector which generates revenue via the export of seafood to neighbouring islands.

Data collected shows an overall of 802'163 pounds of seafood to include lobster, conch and crab were exported over a five year period. 85 pounds of conch shell contributed to the total figure recorded for export.

Table X.7 below provides a breakdown according to the recorded data from the Fisheries Department, Conch was the largest amount of seafood to be exported; this was closely followed by crab and then lobster. In 2011, 294,747lbs was the highest recorded figure ever to be exported over the period. Conch contributed some 291,408lbs in that said year.

Meanwhile, Table X.8 will portray the various species of fishes that were hauled over the five year period under review. It must be noted that the Department recorded an estimated overall total value of EC\$18,032,618 for a total overall haul of 1,861,271lbs of various fishes.

Table X.7. Export of Seafood per pound on a yearly basis, 2009 – 2013

Year	Lobster	Conch	Crab	Conch Shell	Total
2009	177	142,638	0	0	142,815
2010	2,378	140,356	0	0	142,734
2011	139	291,408	3,167	33	294,747
2012	214	110,111	1,275	14	111,614
2013	235	107,177	2,803	38	110,253
<b>Total</b>	<b>3,143</b>	<b>791,690</b>	<b>7,245</b>	<b>85</b>	<b>802,163</b>

Comparison of Lobster, Conch and Crab exported to neighbouring islands between 2009 and 2013

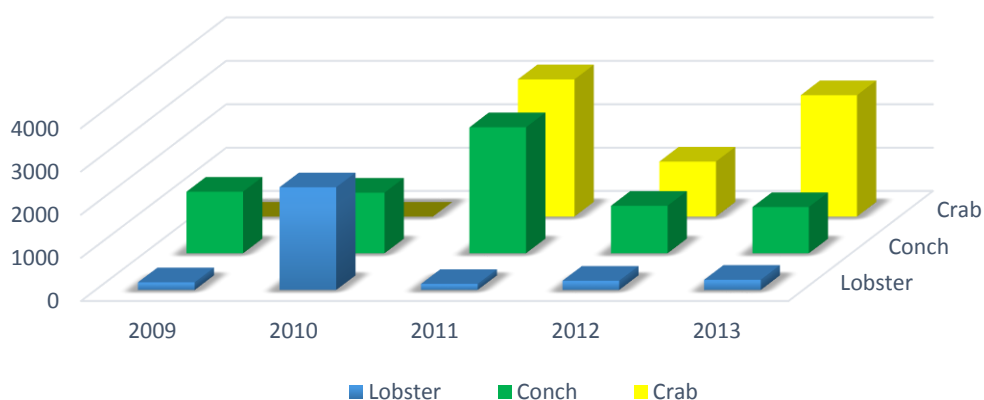


Table X.8. Estimated Landings of species of fishes during the period 2009 – 2013

SPECIES	2009	2010	2011	2012	2013
Snapper	41655	47663	34687	7656	7270
Grouper	34840	25979	38419	858	223
Grunt	17020	17443	23928	0	0
Old Wife	0	0	0	0	208
Parrot	31935	24133	30685	0	0
Goatfish	7920	2518	6004	0	0
Doctor Fish	45280	30850	40562	0	0
Squirrelfish	20550	19526	26850	0	0
Triggerfish	10390	5258	17720	0	0
Porgy	9325	5388	4079	0	0
Angel Fish	0	0	4448	0	0

**Table X.8. Estimated Landings of species of fishes during the period 2009 – 2013 con't**

SPECIES	2009	2010	2011	2012	2013
Conch	63745	61655	225735	43310	81403
Lobster	57725	25926	61696	3435	5799
Gar	59160	35794	19992	3056	1401
Ballhoo	61895	28454	51319	1745	2000
Jacks	75890	40063	13114	2497	236
Dolphin	4163	790	6857	11007	6636
Wahoo	2646	8633	34810	3087	3255
Tuna/Mackerel	0	0	5976	591	0
Kingfish	0	1146	1125	182	131
Tuna/Kingfish	465	0	0	0	0
Skip Jack	0	0	3960	291	91
Lion Fish	0	0	0	0	19
Tuna	0	0	0	0	2308
Bonito	0	0	216	30	0
Mackerel	0	0	584	24	42
Mullet	0	0	1499	318	0
Marlin	0	0	188	1151	1474
Shark	0	0	2763	322	250
Baracuda	0	0	3822	847	365
Shell Fish	0	0	9865	213	384
Crab	0	0	852	1	23
Mixed Fish	0	0	0	13743	54306
Tarpon	0	0	0	603	0
Squid	0	0	0	102	0
Other	288	0	0	0	0
Turtle	0	0	0	0	350
Congo Eel	0	0	0	0	162
<b>Total in (lbs)</b>	<b>544892</b>	<b>381219</b>	<b>671755</b>	<b>95069</b>	<b>168336</b>
<b>Value in (EC\$)</b>	<b>5,204,633</b>	<b>3,707,790</b>	<b>6,581,985</b>	<b>940,165</b>	<b>1,598,045</b>

NB: Method of calculating the estimated landing has changed for 2012 and beyond.

Source: Fisheries Department, Nevis

## Trade:

Revenue is also generated from the value of imports via the Customs Department. A recorded amount of revenue to a total value of import goods and services between 2009 and 2013 is \$561,496,376.49. Imported value over the period fluctuated from year to year, but at the end of 2013, a total of \$120,675,322.70 was collected when compared to the end of 2009, a total value of \$98,061,767.29. In comparison to 2012 and 2013, there was an increase of some \$8,636,561.70 or 7.14%.

The stated values are inclusive of Cost Insurance and Freight. The values also include government and other concessionary imports.

**Table X.9: Total Value of Imports into Nevis 2009 – 2013**

Year	Total
2009	\$98,061,767.29
2010	\$108,769,818.90
2011	\$121,950,706.60
2012	\$112,038,761.00
2013	\$120,675,322.70



## Rainfall

The Nevis Meteorological Department is responsible for the collection of rainfall data on the island. The Department of Agriculture to some extent also collect rainfall data from the various rain gauges strategically placed around the island. The data herein covers the period 2009 – 2013.

Total rainfall data was the highest in 2010 with a recorded amount of 1762.2 mm and the lowest in 2009 of 705.7 mm. Highest total monthly recording was in the month of October 2010 of 424.7 mm.

Rainfall data collection is important as it determines how well agricultural crops grow and yield. It helps farmers determine just how important fluctuations in precipitation are to the success of crops. The absence of rain can hamper harvest outputs which then can cause a domino effect of not achieving projected yields and revenue outcome. Recording rainfall for consecutive years can also teach farmers about fluctuations from year to year and help them plan accordingly as they learn nature's patterns. Most importantly they learn when to plant to allow plants to mature without irrigation as much as possible.

**Table X.9. Rainfall Data (mm) in Nevis, 2009 – 2013**

Month	2009	2010	2011	2012	2013
January	24.4	37.8	28.5	76	28.6
February	32.2	2.7	27.4	31	18
March	17.2	27.1	50.2	48.9	44.2
April	9.0	174.3	22.2	27.7	89.2
May	113.1	117.2	215.9	143.7	335
June	50.1	205.3	45.6	18.1	84.5
July	95.0	256.2	237.6	149.7	53.1
August	107.1	221.2	200.9	47.5	105.5
September	27.2	137.9	278.5	56.5	87.6
October	49.9	427.7	61.6	350.9	65.6
November	94.2	59.4	285.2	30.7	66.8
December	86.3	59.4	232.6	60.1	136.2
<b>Total</b>	<b>705.7</b>	<b>1,726.2</b>	<b>1,686.2</b>	<b>1,040.8</b>	<b>1,114.3</b>

## Section XI



### **C**riminal and **P**rotection

∂ Crime Statistics Reported

∂ Number of Fires by Category

## Crime

The issue of crime continues to be top priority not only for the enforcement agencies but the administrators of the island of Nevis. Over the last five years, a combined total of 1,841 criminal activities were recorded at the Royal St. Christopher and Nevis Police Force, Division, "C". House breaking was 361, Larceny 230, and possession of controlled drugs 298. Other serious offences which contributed to the total figure were commercial premise breakings 157, burglary 134, armed robbery 80 and breakings with intent to enter and steal 70.

**Table XI.1 Crime Statistics recorded between the period 2009 and 2013**

Crime Category	2009	2010	2011	2012	2013	Total
Murder	3	5	6	3	10	27
Attempted Murder	1	3	0	0	1	5
Manslaughter	0	1	0	0	0	1
Wounding	10	15	17	7	19	68
Grievous Bodily Harm (Inflicting/Causing)	3	3	0	1	2	9
Wounding with intent (Firearm)	4	6	7	2	5	26
Rape	2	1	1	5	3	12
Unlawful Carnal knowledge	7	3	3	1	9	23
Defilement/Incest	1	0	2	0	0	3
Uttering of forged documents	2	0	2	0	3	7
Indecent Assault on Females	1	3	5	2	1	12
Assault with Intent to Rob	1	1	0	3	3	8
Robbery/Armed Robbery	6	13	18	25	18	80
Housebreaking	73	63	64	70	91	361
Restaurant Breaking	0	2	0	0	0	2
Housebreaking and Larceny (Other)	0	0	0	10	4	14
Shop Breaking	7	9	0	0	0	16
Supermarket Breaking	1	1	0	0	0	2
Break & Enter Divine Place of Worship with intent to commit Felon	1	0	0	0	0	1
Commercial Premise Breaking	37	21	36	33	30	157
Storeroom Breaking	5	9	0	0	0	14
Burglary	17	48	14	21	34	134

**Table XI.1 Crime Statistics recorded between the period 2009 and 2013 con't**

<b>Crime Category</b>	<b>2009</b>	<b>2010</b>	<b>2011</b>	<b>2012</b>	<b>2013</b>	<b>Total</b>
Sacrilege	2	0	0	0	2	4
Breaking with Intent to Enter and Steal	24	14	0	19	13	70
Shooting with Intent	5	4	2	0	1	12
Larceny	41	36	58	45	50	230
Unlawful Possession	0	0	1	0	1	2
Receiving Stolen Goods	0	0	0	4	1	5
Obtaining Credit by Fraud	1	0	0	1	0	2
Housebreaking with intent other	0	0	13	0	0	13
Other Malicious Damage to Property	13	22	0	0	0	35
Causing death by Careless/Reckless or Dangerous Driving	0	0	1	0	0	1
Arson	0	0	2	0	2	4
Possession of Controlled Drugs	46	53	86	70	43	298
Possession with Intent to Supply	6	13	5	9	18	51
Importing Controlled Drugs	0	0	0	0	0	0
Cultivating of Controlled Drugs	4	6	4	3	5	22
Unlawful Possession of Firearms/Explosives	5	5	0	0	4	14
Unlawful Possession of Ammunition	5	6	3	5	5	24
Fraudulent Conversion	0	0	0	3	2	5
Malicious Damage	0	0	31	18	12	61
Possession of Firearm with intent to endanger life	0	0	0	2	0	2
Possession of Firearm	0	0	0	3	0	3
Other crime, danger to life or bodily harm	0	0	0	3	0	3
<b>Total</b>	<b>334</b>	<b>366</b>	<b>381</b>	<b>368</b>	<b>392</b>	<b>1,841</b>

The above table will also show the total number of other offences recorded over the said time frame. 78 recorded for Wounding; 61 for Malicious Damage; 51 for Possession with Intent to Supply; 35 for Other Malicious Damage to Property; 27 for Murder; 26 for Wounding with Intent; 24 for Unlawful Possession of Ammunition; 23 for Unlawful Carnal Knowledge and 12 with Indecent Assault on a Female.

## Fire and Rescue Services

The tables following display the various categories of fire broken down by the number of recorded fire calls at the Charlestown Fire Services for the years 2009 to 2013.

**Table XI.2: Number of Fires by Category broken down by fire call in Nevis, 2009**

Class- A		Class- B		Class- C		False	Motor Vehicle Accident	Lampole	Motorcycle
House	3	Fuel	3	Electrical	4	12	5	0	0
Grass/Bush	100	Oil	0						
Stove	1								
Garbage	24								
Vehicle	0								
Other	0								
Total	128		3		4	12	5	0	0

*Source: Fire Rescue Service*

**Table XI.3. Number of Fires by Category broken down by fire call in Nevis, 2010**

Class- A		Class- B		Class- C		False	Motor Vehicle Accident	Motor Vehicle Fire	Motorcycle
House	9	Fuel	3	Electrical	18	9	3	7	0
Grass/Bush	57	Oil	1						
Stove	0								
Garbage	16								
Vehicle	0								
Other	9								
Total	91		4		18	9	3	7	0

*Source: Fire & Rescue Service, Nevis***Table XI.4. Number of Fires by Category broken down by fire call in Nevis, 2011**

Class- A		Class- B		Class- C		False	Motor Vehicle Accident	Motor Vehicle Fire	Motorcycle
House	11	Fuel	1	Electrical	9	18	3	6	0
Grass/Bush	82	Oil	0						
Stove	0								
Garbage	25								
Vehicle	0								
Other	2								
Total	120		1		9	18	3	6	0

*Source: Fire & Rescue Service, Nevis*

**Table XI.5. Number of Fires by Category broken down by fire call in Nevis, 2012**

Class- A		Class- B		Class- C		False	Motor Vehicle Accident	Motor Vehicle Fire	Motorcycle
House	10	Fuel	0	Electrical	2	15	0	2	0
Grass/Bush	41	Oil	0						
Stove	0								
Garbage	32								
Vehicle	3								
Copper	1								
Other	0								
Total	87		0		2	15	0	2	0

*Source: Fire & Rescue Service, Nevis***Table XI.6. Number of Fires by Category broken down by fire call in Nevis, 2013**

Class- A		Class- B		Class- C		False	Motor Vehicle Accident	Motor Vehicle Fire	Motorcycle
House	9	Kitchen	2	Electrical	3	20	3	4	0
Grass/Bush	47	Propane	1						
Tool Shed	4								
Garbage	50								
Tyres	2								
Copper	0								
Other	0								
Total	112		3		3	20	3	4	0

*Source: Fire & Rescue Service, Nevis*