

This publication is eighth of the Nevis Tourism Realities (NTR), which is produced every quarter by the Statistics Department. It is provided to inform its readers of the number of visitors arrival via air using the VWAI Airport and the seaport via Charlestown harbour into Nevis.

The second quarterly report for 2018, provides detailed statistics for the period ending June 2018 on the tourism sector performance. It indicates visitors arrivals via air and sea ports. By the end of June 2018, figures showed a decrease when compared to the same period for 2017 via air arrivals. Meanwhile, the figures for visitors arrivals via sea, show an increased of cruise calls, and of yacht calls by the end of June 2018 when compared to the same period of 2017.

## AIR VISITORS ARRIVALS

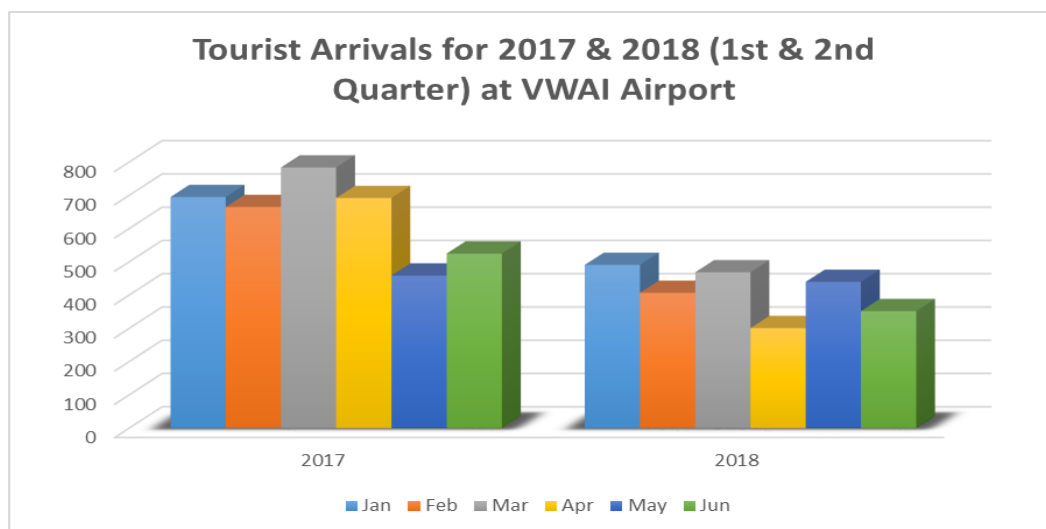
On a monthly basis, there is a compilation of the immigration cards from the Vance W. Amory International Airport. These are used to evaluate the information which is provided for this report.

There was a total of 2,460 visitors who arrived by air for the months, January to June 2018. This indicates that there was a decrease of 1,360 in visitors arrivals between 1st & 2nd quarter of 2017 and 2018.

June 2018 recorded a total of 352 tourists arrival in Nevis via VWAI; while 440 tourists were recorded for May 2018 and 301 for April 2018. The amount for April 2018 displayed a decline of 391 in comparison to April 2017.

*Table 1 - Tourist Arrivals for 2018 and 2017 - January to June*

Year	Jan	Feb	Mar	Apr	May	Jun	Total
2018	491	407	469	301	440	352	2,460
2017	695	665	784	692	459	525	3,820



*Table 2 - Visitors Arrivals during tourism season for period 2010/11 to 2016/17*

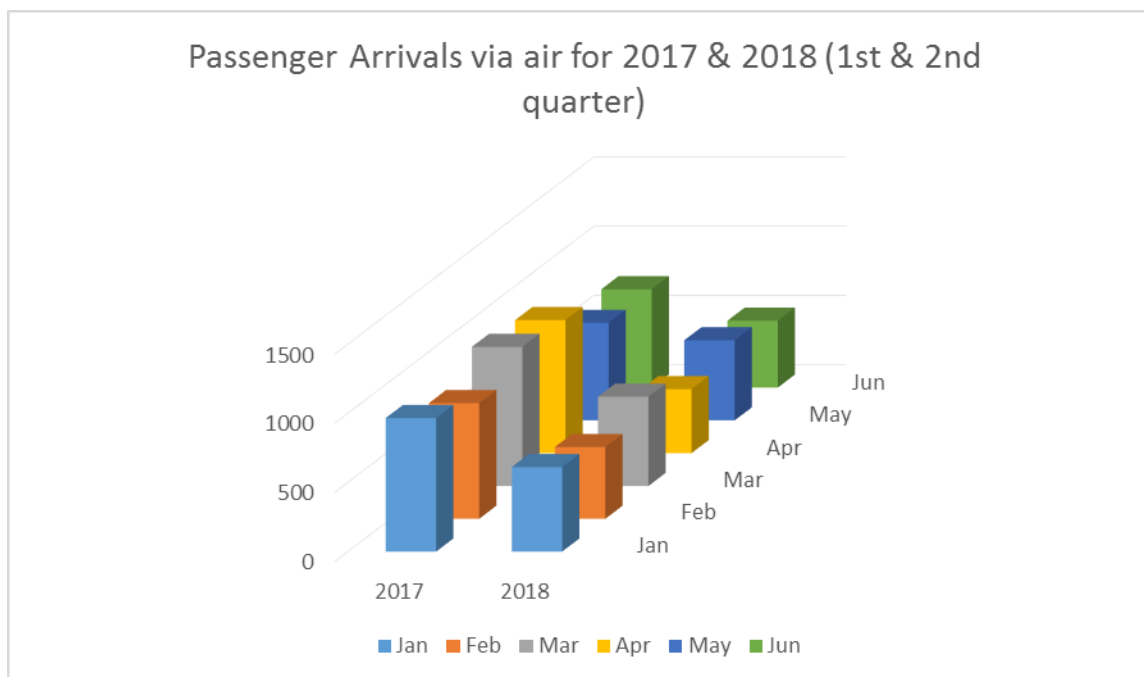
Tourism Season - Visitors Arrivals							
Year 2010/2011 to 2016/2017							
Months	2010/2011	2011/2012	2012/2013	2013/2014	2014/2015	2015/2016	2016/2017
January	824	763	1,020	802	657	726	695
February	729	715	568	713	1,067	683	665
March	861	820	787	757	616	770	784
April	718	579	715	747	616	758	692
May	577	485	572	597	532	534	459
June	533	396	408	581	316	526	525
Total	4,242	3,758	4,070	4,197	3,804	3,997	3,820

## PASSENGER MOVEMENT

The table below shows the total passengers arrivals (tourist and non-tourist) via VWAI Airport for the period January to June 2018 and 2017. The data showed a decrease for the 1st & 2nd quarter of 2018 of 1,885 when compared to the same period of 2017. The quarter ending in June 2017 summed a total of 5,186 while the quarter ending in June 2018, summed a total of 3,301.

*Table 3 - Total Passengers movement by Air for 2017 & 2018 1st & 2nd quarter*

Passenger	Jan	Feb	Mar	Apr	May	Jun	Total
2018	611	519	646	463	579	483	3,301
2017	966	836	1006	962	705	711	5,186



## HISTORICAL MOVEMENTS - March

This publication focus on the 2nd quarter. This simply means that information for each quarter is provided. This information is displayed as a historical collection over a 10 year period, June 2009 to June 2018.

The numbers indicates that there was a decline of tourist arrivals of 159 between the years 2009 and 2017. It clearly states that for the period 2009 to 2014, the figures changed over those years in tourist arrivals. A significant decrease is evident of 173 when comparing tourist arrivals for 2017 and 2018.

*Table 4 - Arrivals by Air for the month of June for the period 2009 - 2018*

2nd Quarter -June	2009	2010	2011	2012	2013	2014	2015	2016	2017	2018
Tourist Arrivals	366	-	533	396	408	581	316	526	525	352



## LENGTH OF STAY

In the tables shown below are data for the 1st - 2nd quarter (January to June) 2017 and the same period for 2018, for tourists who visited the island by way of the Vance W Amory International Airport and their length of stay. The category 4-7 days was preferred most with a total of 1701 tourists; 721 preferred to stay 15+ days; 712 preferred to stay 1-3 days and 658 for 8-14 days.

Whereas, in comparison to the same period in 2018 showed that the category 4-7 days was preferred most with a total of 1138 tourists for the 1st & 2nd quarter; 438 preferred 8-14 days; 436 preferred 15+ days and 434 preferred 1-3 days.

The data indicated a decrease of 1346 in arrivals for the 1st & 2nd quarter of 2018 in comparison to the 1st & 2nd quarter of 2017.

*Table 11 - Length of Stay for visitors arrivals by air for the 1st quarter of 2017*

Month	1 – 3 days	4 – 7 days	8 – 14 days	15 + days	Not Stated
January	170	214	117	189	0
February	137	333	105	88	0
March	151	400	127	93	3
April	112	323	153	102	0
May	55	174	74	154	0
June	87	257	82	95	0

*Table 12 - Length of Stay for visitors arrivals by air for the 1st quarter of 2018*

Month	1—3 days	4—7 days	8—14 days	15 + days	Not stated
January	76	193	82	140	0
February	69	191	78	66	0
March	97	221	85	59	0
April	61	155	57	27	0
May	74	229	43	91	0
June	57	149	93	53	0



# CRUISE AND YACHT

The table below displayed an increase in cruise calls, cruise passengers and cruise crew for the 2nd quarter of 2018 in comparison to the same period of 2017. The second quarter of 2018 reported that there were 9 calls, an increase of 9 cruise calls in comparison to the same period in 2017 with 0 cruise calls being recorded.

There was a great increase in cruise passengers in the same period of 2018 of 1,144 in comparison to 2017. The data also displays that there was an increase in cruise crew by 1,228, in the 2nd quarter of 2018, in comparison to the same quarter of 2017 with 0.

For yacht calls and yacht passengers, the data reveals a decrease in arrivals for the period under review. The quarter noted 123 yacht calls, a decrease of 21 for arrivals when compared to 2017 same period with 144 calls.

*Table 5 - Cruise calls, passengers and crew for 2018 and 2017- January to June (1st & 2nd quarter)*

Year	Cruise Calls		Cruise Passengers		Cruise Crew	
	1 <sup>st</sup> quarter	2nd quarter	1 <sup>st</sup> quarter	2nd quarter	1st quarter	2nd quarter
2018	46	9	5119	1144	5154	1228
2017	21	0	3959	0	2900	0

*Table 6 - Yacht calls for 2017 and 2018 - January to June (1st & 2nd quarter)*

Yacht Calls	Jan	Feb	Mar	Apr	May	June	Total
2018	67	60	80	81	28	14	330
2017	60	93	85	83	38	23	382

*Table 7 - Yacht calls and Yacht Passengers arrivals 1st & 2nd quarter 2017/2018*

Year	Yacht Calls		Yacht Passengers	
	1 <sup>st</sup> quarter	2nd quarter	1 <sup>st</sup> quarter	2nd quarter
2018	207	123	1266	497
2017	238	144	1224	522

*Yacht & Cruise data for 1st & 2nd quarter for 2018*

Period	Yacht Calls	Yacht Passengers	Yacht Crew	Yacht Passenger Total	Cruise Calls	Cruise Passengers
January	67	134	223	357	16	1635
February	60	182	289	471	17	2227
March	80	143	295	438	13	1257
1 <sup>st</sup> Quarter	207	459	807	1266	46	5119
April	81	63	297	360	7	1120
May	28	2	80	82	2	4
June	14	3	52	55	0	0
2 <sup>nd</sup> Quarter	123	68	429	497	9	1144



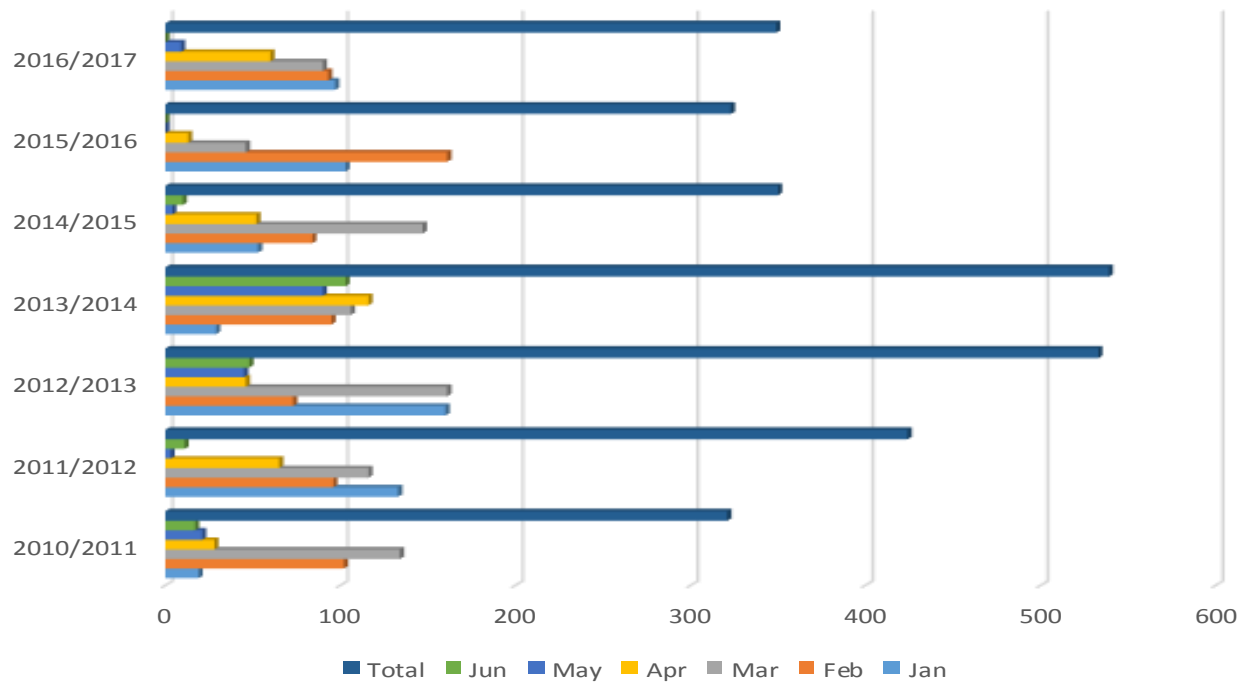
*Table 9 - Yacht Passengers during tourism season for period 2010/11 to 2016/17*

<b>Tourism Season - Yacht Passengers, 2010/11 to 2016/17</b>							
<b>Year</b>							
<b>Months</b>	<b>2010/2011</b>	<b>2011/2012</b>	<b>2012/2013</b>	<b>2013/2014</b>	<b>2014/2015</b>	<b>2015/2016</b>	<b>2016/2017</b>
January	19	133	160	29	53	103	97
February	102	96	73	95	84	161	93
March	134	116	161	106	147	46	90
<b>Total</b>	<b>255</b>	<b>345</b>	<b>394</b>	<b>230</b>	<b>284</b>	<b>310</b>	<b>280</b>
April	28	65	46	116	52	13	60
May	21	3	45	90	4	0	9
June	17	11	48	103	10	0	0
<b>Total</b>	<b>66</b>	<b>79</b>	<b>139</b>	<b>309</b>	<b>66</b>	<b>13</b>	<b>69</b>

*Table 10 - Cruise Passengers during tourism season for period 2010/11 to 2016/17*

<b>Tourism Season - Cruise Passengers, 2010/11 to 2016/17</b>							
<b>Year</b>							
<b>Months</b>	<b>2010/2011</b>	<b>2011/2012</b>	<b>2012/2013</b>	<b>2013/2014</b>	<b>2014/2015</b>	<b>2015/2016</b>	<b>2016/2017</b>
January	666	193	1,312	801	2,255	1,417	1,262
February	1,121	919	228	1,009	1,228	2,326	949
March	2,233	1,504	954	755	1,230	1,049	1,748
<b>Total</b>	<b>4,020</b>	<b>2,616</b>	<b>2,494</b>	<b>2,565</b>	<b>4,713</b>	<b>4,792</b>	<b>3,959</b>
April	263	377	522	102	346	0	0
May	0	0	0	0	8	0	0
June	0	0	0	0	0	0	0
<b>Total</b>	<b>263</b>	<b>377</b>	<b>522</b>	<b>102</b>	<b>354</b>	<b>0</b>	<b>0</b>

### Yacht Passengers during Tourism Season for period 2010/2011 - 2016/2017



### Cruise Passengers during Tourism Season for period 2010/2011 - 2016/2017

