

Past trends and Present
position up to 2018

Basic Statistics

NEVIS
STATISTICAL
DIGEST

2019

The Nevis Statistical Digest 2019



©The Department of Statistics, Nevis

All rights reserved.

Published by the Department of Statistics
Designed by Mentrice Warner-Arthurton

The Department of Statistics
TDC Building
Island Main Road, Charlestown, Nevis
Email: statsnevis@niagov.com
Telephone: 1 (869) 469 5521 Ext 2168/2169
Fax: 1 (869) 469 0336

Disclaimer:

While all care has been taken to produce accurate figures based on available data, the Department of Statistics does not accept any liability for any omission from such forecasts nor any loss or damage arising from the use of, or reliance on the information contained within this publication. The information presented in this publication does not reflect the opinion of the Department of Statistics.



Mission Statement

To prepare meaningful, timely, accurate and reliable data, for purpose of decision making and macro-economic policy formulation; in an effort to stimulate economic development efforts by attracting new industry and investment to Nevis.

*That the statistics we publish are of the highest quality possible;
That the general public will be confident that the information that
they provide us with are secure;
That the importance of the department will be recognized.*

“Another mistaken notion connected with the law of large numbers is the idea that an event is more or less likely to occur because it has or has not happened recently. The idea that the odds of an event with a fixed probability increase or decrease depending on recent occurrences of the event is called the gambler's fallacy.”

(Leonard Mlodinow , The Drunkard's Walk: How Randomness Rules Our Lives)

CONTENTS

Tables

Foreword

Editorial

Explanatory Notes

Chapter 1

GENERAL INFORMATION ABOUT NEVIS

- ⌘ Notable Local & Historical Events*
- ⌘ Structure of Nevis Island Administration & Elections Results*
- ⌘ Election Results*

Chapter 2

POPULATION AND VITAL STATISTICS

- ⌘ Population/Population Growth, Ethnic Groups, Religion*
- ⌘ Birth, Death & Infant Mortality, Teenage Pregnancy*
- ⌘ Marriages, Location of Marriages and Divorces*

Chapter 3

HOUSING, INFRASTRUCTURE AND CONSTRUCTION

- ⌘ Households, Building Permits Issued*
- ⌘ Titles Registered, Deeds Registered*
- ⌘ Electricity Consumers and Production*
- ⌘ Water Consumption*
- ⌘ Building started Construction by Type*

Chapter 4

TRANSPORTATION

- ⌘ Registration and Licensing of Vehicles, Importation of Vehicles,*
- ⌘ Drivers Written & Road Test, Traffic Accidents*
- ⌘ Aircraft Movements*
- ⌘ Cargo Movements via Air and Sea Ports*

Chapter 5

TOURISM AND PASSENGERS MOVEMENT

- ⌘ Accommodations*
- ⌘ Visitors Arrivals*
- ⌘ Length of Stay & Purpose of Visit*
- ⌘ Yacht and Cruise Calls & Passengers*
- ⌘ Passengers Movements via Air & Sea Ports*
- ⌘ Arrivals into St. Kitts bound for Nevis*

Chapter 6

HEALTH AND SOCIAL

- ⌘ *Selected Health Indicators*
- ⌘ *Number of Registered Medical Practitioners*
- ⌘ *Intentional & Unintentional Injuries*
- ⌘ *Infant & Toddlers Visit*
- ⌘ *Registered Psychiatric Patients*
- ⌘ *Laboratory Cases at Alexander Hospital & Avalon*
- ⌘ *Registered Diabetics & Hypertensive Patients*
- ⌘ *Dental Unit*

Chapter 7

SOCIAL SERVICES AND GENDER AFFAIRS

- ⌘ *Reported Cases from Family Services Division*
- ⌘ *Hot Meals distribution by Parish & Gender*

Chapter 8

FINANCE

- ⌘ *NIA Revenue and Expenditure (Estimates)*
- ⌘ *Inland Revenue Department*
- ⌘ *Customs & Excise Department*
- ⌘ *Nevis Financial Services*
- ⌘ *SKB/NEV GDP*
- ⌘ *Consumer Price Index – Inflation Rate*

Chapter 9

EDUCATION

- ⌘ *General Information on Pre-Schools, Nurseries, Primary, Secondary*
- ⌘ *Number of Students and Teachers (public & private)*
- ⌘ *Number of CSEC Subjects Passes for Secondary Schools Students*
- ⌘ *CAPE Grade Distribution at the Sixth Form College*
- ⌘ *Enrollment at the Charlestown Secondary Sixth Form College*
- ⌘ *Number of Students per CSEC Subject passes – Gingerland & Charlestown*
- ⌘ *CSEC Subject Entries and Percentage Passes – Gingerland & Charlestown*
- ⌘ *CAPE Subject Entries and Percentage Passes – Sixth Form College*
- ⌘ *Final Scores Gulf Insurance Primary Schools Athletic Competition*

Chapter 10

EMPLOYMENT

- ⌘ *Average number of Employees by Selected Industries and Services*
- ⌘ *Work Permit Application by Sectors*
- ⌘ *Work Permit Application by Nationality*

Chapter 11

AGRICULTURE PRODUCTION AND TRADE

- ⌘ *Egg Production*
- ⌘ *Throughput at the Marketing Division*
- ⌘ *Production of Target Crops*
- ⌘ *Animals Slaughter per annum*
- ⌘ *Estimated Landings of Species of Fishes*
- ⌘ *Export of Sea Food per annum*
- ⌘ *Output from Propagation Unit*
- ⌘ *Production and quantity of commodities sold*

Chapter 12

TRADE

- ⌘ *Total Value of Imports*
- ⌘ *Total Value of Exports*
- ⌘ *Exports of certain commodities*

Chapter 13

RAINFALL

- ⌘ *Rainfall Data (mm)*

Chapter 14

CRIME STATISTICS AND FIRE CALLS

- ⌘ *Crime Statistics*
- ⌘ *Fire Calls*

TABLES

Chapter 1: General Information about Nevis

- 1.1 *Members of the Nevis Island Administration and portfolios*
- 1.2 *Member(s) of the Opposition*
- 1.3 *Political parties contested the Nevis Island Elections, 1987-2017*
- 1.4 *Nevis political parties contest the Federal Elections, 1984-2017*
- 1.5 *Federal Elections Results for Nevis, 1995-2015*
- 1.6 *Nevis Island Election results, 2015*
- 1.7 *Nevis Island Election results, 2017*

Chapter 2: Population and Vital Statistics

- 2.1 *Census Day and Population, 1871- 2011*
- 2.2 *Nevis Intercensal Population Growth, 1871-2001*
- 2.3 *Nevis Population by Parish per Census, 1871-2001*
- 2.4 *Population by Parish and Sex, 2001 and 2011*
- 2.5 *Population by Parish, Sex and Percentage Change, 2001/2011*
- 2.6 *Comparison between males & females, Age Group and Percentage Distribution*
- 2.7 *Comparison between Household Sizes & Density by parish, 2001/2011*
- 2.8 *Population by Age Group by parish, Census 2001*
- 2.9 *Population by Age Group by parish, Census 2011*
- 2.10 *Population by Age 85 & over by parish, Census 2011*
- 2.11 *Population by Age 85 & over by parish and Sex, Census 2011*
- 2.12 *Population by Ethnicity, Sex, Frequency and Percentage, Census 2011*
- 2.13 *Population by Religion and Sex, Census 2011*
- 2.14 *Median Age by Parish and Sex, Census 2001 and 2011*
- 2.15 *Nevis Births, Live and Crude Birth Live Rate, 2010-2018*
- 2.16 *Nevis Deaths, Crude Death Rate, 2010-2016*
- 2.17 *Nevis Infant Mortality Rate, Still Birth/Still Birth Rate, 2010-2016*
- 2.18 *Teenage Pregnancies by Age, 2010-2018*
- 2.19 *Teenage Birth and Teenage Birth Rate, 2010-2018*
- 2.20 *Location where Marriages took place, 2010-2018*
- 2.21 *Marriages per Parish, 2010-2018*
- 2.22 *Places of Marriages broken down, 2010-2018*
- 2.23 *Number of Absolute Decree (divorces) granted in Nevis, 2010-2018*

Chapter 3: Housing, Infrastructure and Construction

- 3.1 *Number of Households by parish per decade, 1970-2011*
- 3.2 *Building Permits issued by Sector, 2010-2018*
- 3.3 *Building Permits issued per project, 2010-2018*
- 3.4 *Certificates of Title issued at the Registry in Nevis, 2010-2018*
- 3.5 *Building started Construction by Type, 2013-2018*
- 3.6 *Type of Deeds registered at the Registry in Nevis, 2010-2018*
- 3.7 *Electricity Consumers & Electricity Production, 2010-2018*
- 3.8 *Water Consumption, 2010-2018*

Chapter 4: Transportation

- 4.1 *Number of vehicles Registered 2010-2018*
- 4.2 *Number of vehicles Licensed, 2010-2018*
- 4.3 *Number of vehicles Imported, 2012-2018*

- 4.4 *Results of Drivers Written Tests, 2010-2018*
- 4.5 *Results of Driver's Road Tests, 2010-2018*
- 4.6 *Results of Traffic Accidents, 2010-2018*
- 4.7 *Aircraft Arrivals & Departures via VWAI, 2010-2018*
- 4.8 *Cargo Movements to and from VWAI, 2010-2018*
- 4.9 *Cargo Movements via Seaport(s), 2010-2018*

Chapter 5: Tourism and Passengers Movement

- 5.1 *Number of Hotels, Rooms & Beds, 2010-2018*
- 5.2 *Accommodation for Stay-overs, 2010-2018*
- 5.3 *Monthly Visitors Arrivals, 2010-2018*
- 5.4 *Visitors Arrivals during Tourism Season, 2010/11-2017/18*
- 5.5 *Visitors Arrivals from traditional territories, 2010-2018*
- 5.6 *Monthly Visitors Arrivals from the United States countries, 2010-2018*
- 5.7 *Monthly Visitors Arrivals from the United Kingdom countries, 2010-2018*
- 5.8 *Monthly Visitors Arrivals from the Province of Canada, 2010-2018*
- 5.9 *Visitors Length of Stay, 2010-2018*
- 5.10 *Visitors Purpose of Visits, 2010-2018*
- 5.11 *Number of Yachts and Cruise Ship Calls, 2010-2018*
- 5.12 *Number of Yachts and Cruise Ship Passengers, 2010-2018*
- 5.13 *Number of Cruise Ship Calls during the Tourism Season, 2010/11-2017/18*
- 5.14 *Number of Cruise Ship Passengers during the Tourism Season, 2010/11-2017/18*
- 5.15 *Monthly totals divided in quarters for Yacht Passengers, 2010-2018*
- 5.16 *Percentage change per ½ year for Yachts and Cruise, 2010 - 2018*
- 5.17 *Tourist arrivals by Age, 2010-2018*
- 5.18 *Tourist arrivals by Sex, 2010-2018*
- 5.19 *Passenger Arrivals and Departures per ½ year to and from VWAI, 2010-2018*
- 5.20 *Inter Ferry Passenger Movements between Charlestown & Basseterre, 2010-2018*
- 5.21 *Arrivals in St. Kitts bound for Nevis 2018*
- 5.22 *Purpose of Visit in St. Kitts bound for Nevis 2018*

Chapter 6: Health & Social

- 6.1 *Selected Health Indicators, 2010-2018*
- 6.2 *Intentional and Unintentional Injuries, 2010-2018*
- 6.3 *Infant Visits at Health Centres, 2010-2018*
- 6.4 *Toddlers Visits at Health Centres, 2010-2018*
- 6.5 *Infant Visits (new) at Health Centres, 2010-2018*
- 6.6 *Registered Psychiatric Patients by Age Range, 2013-2018*
- 6.7 *HIV/AIDS laboratory cases at Alexandra, 2010-2018*
- 6.8 *HIV/AIDS laboratory cases at Avalon, 2010-2018*
- 6.9 *Registered Diabetic Patients by Sex at Health Centres, 2010-2018*
- 6.10 *Registered Hypertensive Patients by Sex at Health Centres, 2010-2018*
- 6.11 *Dental Statistics by Services Rendered and by Patients, 2010-2018*

Chapter 7: Social Services and Gender Affairs

- 7.1 *Family Services Division Reported Cases in Nevis, 2010-2018*
- 7.2 *Hot Meals Statistics in Nevis, 2010-2018*

Chapter 8: Finance

- 8.1 *Nevis Estimates, 2010-2018*
- 8.2 *Revenue collected from Customs & Excise Department, 2013-2018*

- 8.3 *Revenue collected from Inland Revenue, 2013-2018*
- 8.4 *Revenue and Expenditure Analysis, 2012-2018*
- 8.5 *Revenue collected per quarter, 2013-2018*
- 8.6 *Number of New Companies Registered, 2012-2018*
- 8.7 *Number of Active Entities, 2012-2018*
- 8.8 *St. Kitts and Nevis Gross Domestic Product by Economic Act in Current Prices, 2013-2018*
- 8.9 *St. Kitts and Nevis Gross Domestic Product by Economic Act in Constant (2006) Prices, 2013-2018*
- 8.10 *Consumer Price Index – Quarterly indices & Inflation Rate, 2014*
- 8.11 *Consumer Price Index – Quarterly indices & Inflation Rate, 2015*
- 8.12 *Consumer Price Index – Quarterly indices & Inflation Rate, 2016*
- 8.13 *Consumer Price Index – Quarterly indices & Inflation Rate, 2017*
- 8.14 *Consumer Price Index – Quarterly indices & Inflation Rate, 2018*

Chapter 9: Education

- 9.1 *General Information on Preschool and Nurseries, 2010/11-2017/2018*
- 9.2 *Number of Public & Private Primary Schools, 2010/11-2017/18*
- 9.3 *Number of Students and Teachers in Public Primary Schools, 2010/11-2016/2017*
- 9.4 *Number of Students and Teachers in Private Primary Schools, 2010/11-2016/2017*
- 9.5 *Number of Public & Private Secondary Schools, 2010/11-2017/2018*
- 9.6 *Number of Students and Teachers in Public Secondary Schools, 2010/11-2016/2017*
- 9.7 *Number of Students & Teachers in Private Secondary School, 2010/11-2015/2016*
- 9.8 *CSEC Subject Passes for Charlestown and Gingerland Secondary School, 2010-2018*
- 9.9 *CAPE Grade Distribution at Charlestown Secondary Sixth Form College, 2010-2018*
- 9.10 *Enrolment at Charlestown Secondary Sixth Form College, 2010-2018*
- 9.11 *Number of students per CSEC Subject pass at GSS, 2010-2018*
- 9.12 *Number of students per CSEC Subject pass at CSS, 2010-2018*
- 9.13 *Subject Entries & Percentage Pass at CSS, 2010-2018*
- 9.14 *Subject Entries & Percentage Pass at GSS, 2010-2018*
- 9.15 *Sixth Form College CAPE Results per subject, 2018*
- 9.16 *Final Scores for Gulf Insurance Primary School Athletic Championship, 2010-2018*

Chapter 10: Employment

- 10.1 *Average Employees by Selected Industries and Services in Nevis, 2012-2017*
- 10.2 *Work Permit Applications by Sector in Nevis, 2010-2017*
- 10.3 *Work Permit Application by Sector and by Sex, 2012 - 2017*
- 10.4 *Work Permit Applications by Region/Nationality and by Sex, 2013-2017*

Chapter 11: Agriculture Production

- 11.1 *Egg Production per quartile in Nevis, 2010-2018*
- 11.2 *Throughput per annum at the Marketing Division, 2013-2018*
- 11.3 *Accumulative total of acreage formed and estimated yield, 2013-2017*
- 11.4 *Production Analysis & Comparison of targeted Crops, 2013-2017*
- 11.5 *Top ten targeted crops, 2013-2017*
- 11.6 *Annual Production of popular animals slaughtered, 2010-2018*
- 11.7 *Estimated landings of species of fishes, 2013-2017*
- 11.8 *Export of Seafood per pound, 2010-2018*
- 11.9 *Number of livestock slaughtered at Abattoir, 2013-2018*
- 11.10 *Average carcass weight of livestock slaughtered at Abattoir, 2013-2018*
- 11.11 *Output from Propagation Unit of vegetable seedlings, fruit tress & herbs, 2013-2018*
- 11.12 *Estimated fish landing per quartile, 2018*
- 11.13 *Product & quantity of value added commodities sold at the Abattoir, 2013-2018*

11.14 *Total Exports for the period 2013-2017*

Chapter 12: Trade

12.1 *Total Value of Imports, 2010-2018*

12.2 *Total Value of Exports, 2013-2018*

Chapter 13: Rainfall

13.1 *Monthly Rainfall data, 2010-2018*

13.2 *Rainfall during Hurricane Season, 2010-2018*

Chapter 14: Crime Statistics and Fire Calls

14.1 *Crime Statistics reported & recorded, 2010-2018*

14.2 *Crimes committed under Drug Act, 2010-2018*

14.3 *Violent Crimes committed, 2010-2018*

14.4 *Crimes committed Against a Person, 2010-2018*

14.5 *Crimes committed under the Larceny Act, 2010-2018*

14.6 *Serious Offences committed, 2010-2018*

14.7 *Number of Fires by Category broken down, 2010-2018*

14.8 *Fire calls per Category A, 2010-2018*

14.9 *Fire calls per Category B, 2010-2018*

14.10 *Fire calls per Category C, 2010-2018*



Foreword

The vast amount of dated documents which have aided in the compilation for this year Statistical Digest, provide the necessary tools for an analyst to characterize and develop assumptions.

Anually published, the figures are mainly annual totals for calendar months combined into sections in an effort to offer ease of reference. Improvements and revisions are continually made.

Notification of errors and omissions is welcomed.

A soft copy may be downloaded via the Nevis Island Administration's website, www.nia.gov.kn, under the Department of Statistics. For users with specific requirements, the Department of Statistics may be able to offer assistance.

Except where other copyright is indicated, and once used as intended, articles in this publication may be freely duplicated with acknowledgement of the Source. The Department welcomes your questions and or comments which can be send to:

The Director,
Department of Statistics,
TDC Building, Main Street,
Charlestown, Nevis.

Editorial

Welcome to the 2019 issue of the Statistics Digest. Presented by the Department of Statistics, this 6th revised-edition, is intended for use as an essential reference tool for policy makers and economists.

The data collected are used to calculate indicators to track, monitor and evaluate the country's progress. This Digest, will aid decision-makers to interpret trends and realities of the economy. For it was William James, an American philosopher and psychologist who once said, "We must be careful not to confuse data with the abstraction we use to analyse them."

Hence, from time to time, Statistical directorates have assembled in various OECS countries to discuss ways forward on improving the delivery of statistics across the region. Therefore it is imperative that the Statistics Units produce not only accurate but timely data.

Each section captured in this digest, detail trends for assessment and monitoring systems performance to include but not limited to the number of construction, importation of vehicles, movement of cargo and people, the agricultural production and various crimes reported to the authorities.

The preliminary chapters of this digest provide details on the country's demographics and the political trend dating back to 1984. Historical events dating 1493 to present and notable local events form part of the dossier.

For those of you who have appreciated our previous editions, it is my pleasure as the Editor to present this year's publication, and to keep in mind the words once said by Paul Anderson, "I have yet to see any problem however complicated, which when you looked at it the right way, did not become more, still complicated."

Special thanks is extended to our private and public partners who collected, collated, disseminated, analysed and forward the data use to assist in this year's publication. We look forward to the continual harmonization between, other departments of government, the private sector of the economy and our department.

Mentrice Warner Arthurton, MPM, BSc, Dip
Complier & Layout Artist,
Editor

Explanatory Notes

The Digest

The formation for this digest comprises of 11 sections, which can be considered as the statistics indicators, which can be used to analyse the social and economic trends of the island of Nevis.

Some of these indicators include but not limited to population, infrastructure, health, education, tourism, agriculture, finance and crime.

Reporting Period

The period under review commences on January 1st 2010, and end on December 31st 2018.

Data Source

The data used in this publication was obtained mainly from administrative records of public and private sector agencies.

Rounding

In some instances, data is rounded up/down to one or two decimal places.

Symbols and Abbreviations

%	<i>Percentage</i>	/	<i>(between two consecutive years) indicates a Financial Year or School Year</i>
in	<i>Inches</i>	GDP	<i>Gross Domestic Product</i>
brk	<i>Break</i>	-	<i>Nil or Negligible</i>
mm	<i>Millimeter</i>	TEU	<i>Twenty Equivalent Units (containers are 20ft or 40ft)</i>
con	<i>Container</i>	FOB	<i>Freight on Board</i>
km	<i>Kilometer</i>	LLC	<i>Limited Liability Company</i>
N/A	<i>Not Applicable</i>	NBCO	<i>Nevis Business Company Ordinance</i>
kg	<i>Kilograms</i>	Mw\h	<i>Milliwatt per hour</i>
lbs.	<i>Pounds</i>	GNI	<i>Gross National Income</i>

Section 1 - *General Information*

Nevis, a 36-square miles jewel, lies near the top of the Lesser Antilles archipelago. Given the alias, 'Queen of the Caribees' in 1671, the island is accepted for its small, sombrero shape like statue. Its charm and tranquility will take you back in time when things were simpler, life more peaceful and stress was just a word. This gem intertwines as part of the Federation of St. Christopher and Nevis and has natural vegetation that is unparalleled.

Area:

Nevis is 36 square miles (93 square kilometers). The island is 7 miles (11.2 km) long by 6 miles (9.6 km) wide.

Location:

It is located about 200 miles south of Puerto Rico or approximately 17° North Latitude, and just west of Anguilla, approximately 62° West Longitude.

Geographical Division (Parishes)

The island of Nevis is geographically divided into five parishes: St. Paul's, St. Thomas', St. James, St. Georges, and St. Johns.

Highest Point:

Nevis is conical in shape with a volcanic peak known as Nevis Peak. It is the highest point on the island and stands at a height of 3,232 ft.

Capital:

The island's capital is Charlestown.

Airport:

Nevis' airport is named Vance W Amory International Airport (formerly Newcastle Airport). It is situated in St. James Parish and a journey from it to Charlestown, takes approximately 10 - 15 minutes.

Religion:

One of the most important elements of the people of Nevis, is their religious beliefs which are traditionally founded on Christianity. As a people, who are linked to their past, Nevisians embrace Christian beliefs as taught by several denominations in the society. Traditionally, there were Anglican, Roman Catholic, Methodist, Baptist and Wesleyan Holiness. In recent times, others have been added including: Church of God, Brethren, Evangelical, Pentecostal, Seventh Day Adventist and Jehovah's Witness. From about the mid 1990's, with the influx of immigrants from other Caribbean countries, we have witnessed the practice of religious beliefs in Hindu, Bahai and Muslim.

Banks:

The banking institutions on the island are: the RBTT Bank, the Bank of Nova Scotia, the Bank of Nevis, First Caribbean International Bank, The Development Bank of St. Kitts and Nevis and The

St. Kitts Nevis & Anguilla National Bank. There are two credit unions, the Nevis Cooperative Credit Union and FND Enterprise Cooperative Credit Union Ltd. Of these banking institutions, two are locally owned; the Bank of Nevis which has an international banking section and the St. Kitts Nevis & Anguilla National Bank.

Currency:

The official currency is the Eastern Caribbean Dollar. Foreign currency is convertible at commercial banks at the prevailing rate of exchange.

Air Services:

The aircraft carriers are: Seaborne, Winair, Air Sunshine, Coastal Air, Fly Montserrat, Air Anguilla, Tradewind, Caribbean Helicopters Limited, FEDEX and DHL cargo airlines provide daily courier services.

Sea Services:

Transportation by sea can be accessed via: motor vessels Caribe Breeze, Caribe Surf, Mark Twain, Sea Hustler, Sea Bridge and Apple Cyder. Water Sports Islander company operates a Sea Taxi service via Qualie Beach to St. Kitts.

Hospital:

There is one major hospital on the island, the Alexandra Hospital, located on Government Road, Charlestown. However, there are Parish Health Centres, opened daily to serve the general public.

Police & Fire Services:

There are four (4) Police Stations and two (2) Fire Stations on the island. Of the two fire stations, the main one is adjacent to the Charlestown Police Station and the other is located at the Vance W. Amory International Airport in Newcastle. The other police stations are Cotton Ground, New Castle and Gingerland.

Notable Local Events

Tourism Week:

Mid-February

Nevis St. Kitts Swim:

1st Sunday in March (Participants swim across 2.5 miles of sea water known as the Narrows between Nevis and St. Kitts.)

Horse Racing:

Most Public Holidays (The race track has no stopping gates and the track is not manicured, but there is no other race course in the world which has a backdrop of blue sea and a dormant volcano.)

Drag Racing:

Most Public Holidays (Drag racers from across the Leeward Islands participate in most of the meets. The drag race strip is located in St. James' Parish.)

Inter-Primary Athletics Championship

(Students of primary age compete on a yearly basis for track supremacy.)

Nevis Blues Festival

April

St. Kitts and Nevis Sailing Regatta

Hanley's Road Fishing Tournament

May – June

Culturama

July – August (Nevis' premier Cultural Festival. It is celebrated annually over the last weekend of July –August.)

Nevis Marathon & Running Festival

September (Held on a testing course that has an imaginative combination of challenging hills and flat terrains, providing an opportunity for speed.)

Oualie Beach Fishing Tournament:

October (Approximately 30 boats with fishermen from across the Leeward Islands compete on an annual basis for the largest catch.)

Nevis International Triathlon:

November (Flagship Sporting Event which attracts persons from across the globe.)

Historical Events

- 1493: Sighted and named by Christopher Columbus on his second voyage.
- 1834: Emancipation. (Abolition Act 1833 end slavery in the British Empire on 1st August.
- 1861: First Nevis postage stamp issued.
- 1899: The hospital was destroyed in a hurricane. It was located on Old Hospital Road.
- 1906: The Queen's House, once residence of the Governor was transformed into the hospital and named Alexandra Hospital after Queen Alexandra.
- 1950: The First Secondary School, (Charlestown Secondary) was opened.
- 1956: The Federal Colony of the Leeward Islands was dissolved and St. Kitts, Nevis and Anguilla became a separate colony.
 - Newcastle Airport opened.
- 1958: The colony of St. Kitts, Nevis and Anguilla entered the West Indies Federation as a single unit.
- 1959: M.V. Christena began its ferry service between Nevis and St. Kitts. It was 160 ft. in length and owned and operated by the Government.
- 1961: Nevisians, led by Eugene Walwyn, sought secession from St. Kitts.
- 1967: St. Kitts and Nevis attained Associated Statehood with Britain.

The new Constitution changed the status of St. Kitts-Nevis-Anguilla from Colony to Associated Statehood; however, the rebellion of Anguilla kept her from being part of the new State.

 - The new Constitution provided for the Nevis Local Council.
- 1970: M. V. Christena sank off Nag's Head, St. Kitts while on its journey to Nevis. Approximately 240 passengers most of whom were Nevisians, perished.
 - A group of Nevisians formed the Nevis Reformation Party (NRP) with Simeon Daniel, a Lawyer by profession as the first President.
 - The Nevis Island Administration Building was constructed.
- 1974: The Nevis Dramatic and Cultural Society founded CULTURAMA, a festival dedicated to preserving the culture-music, dance, crafts and cuisine of Nevis.
- 1979: Introduction to Caribbean Examination Council (CXC) proficiency examinations for secondary students.
- 1980: The MV Caribe Queen went into service replacing the MV Liamuiga which was wrecked in St. Kitts by tropical storm David in August 1979.
 - February 19: Following the General Elections, the Nevis Reformation Party formed a coalition with the People's Action Movement. Simeon Daniel was given the portfolio as Minister of Finance.
- 1983: St. Kitts and Nevis attained political independence from Great Britain on September 19.
 - Princess Margaret unveiled the dedication plaque as part of the Independence Celebration.
 - Alexander Hamilton House was renovated to house the Nevis Island Assembly.
 - Mr. Simeon Daniel became the first Premier in Nevis.
 - Mr. Spencer Byron was named the first President of the Nevis Island Assembly following the attainment of Independence.
 - The Nevis Island Administration built the Sixth Form College next to Charlestown Secondary (CSS).

- Mr. Herman Liburd became Speaker of the National Assembly.
 - Mr. Weston Parris was appointed the first Deputy Governor General for Nevis.
- 1984: The Education Department changed the primary schools in Charlestown from segregated boys and girls schools to a co-educational platform.
- 1985: Queen Elizabeth II unveiled a plaque at the Power Station in Prospect.
 - SKANTEL replaced Cable and Wireless as the telecommunication provider.
- 1987: First post-independence (Local Island Assembly) elections held in December.
- 1988: The Nevis Water Department laid new lines in Nevis, the service was metered and from this time consumers began paying for water.
 - The Voice of Nevis (Radio VON) went on the air, becoming the first privately owned radio station in the Federation.
- 1989: In the Federal Elections voters returned the PAM/NRP coalition to office for a third straight term.
- 1990: First vote in Parliament for the Secession bid for Nevis. Needed 4/5 but other members of the NRP did not support Hon. Simeon Daniel.
- 1991: The first 5-Star Hotel – Four Seasons Resort was opened with John Stauss as General Manager and Isadore Sharpe as President of the Four Season brand.
- 1992: Local elections held on June 1. First change of Government in the Local Assembly. The Concerned Citizens Movement (CCM) led by Vance Amory won 3 of the 5 seats, replacing the Nevis Reformation Party (NRP) led Nevis Island Administration. Hon. Simeon Daniel was leader of the party.
 - June 5: Weston Parris, the Deputy Governor General died in office.
- 1994: His Royal Highest, the Duke of Edinburgh visited the island.
 - The first local born to be ordained Priest of the St. Paul's Anglican Church, Ernest Flemming.
- 1995: SKANTEL provided the first internet service on Nevis to Hanver Trust Company.
 - Hurricane Luis and Marilyn came back to back and caused severe damages.
 - His Honour, Eustace John was sworn in as the 2nd Deputy Governor General of Nevis.
- 1996: The Nevis Island Administration dedicated Phase One of the Waterfront renovation project on September 19th.
- 1997: In June the Nevis Island Assembly led by the Concerned Citizens Movement held the first reading of the Secession Ordinance, which called for a vote for separation from St. Kitts.
 - Following the local election, CCM returned to office and saw the first woman – Honourable Jean Nisbett-Harris elected to office.
 - September - Paul Lawrence opened Lyn Jeffers private secondary school.
 - Following the death of Mr. Spencer Byron, first President of the Nevis Island Assembly, the Hon. Marjorie Morton was appointed as President.
- 1998: The Nevis Island Government finished the first phase of the airport expansion.
 - Hurricane George caused several damages.
 - There was a Referendum on Secession for Nevis that resulted in the "yes" vote failed by a narrow margin of 4%. (62% as opposed to 66%).
 - The Nevis Island Administration dedicated the deep-water port at Long Point on September 20th.

- The first female Magistrate for District “C”, Her Worship, Yasmin Clarke was appointed.
- 1999: Hurricane Lenny came from the west side and caused severe damages.
- 2000: Honourable Patrice D H Nisbett replaced Joseph Parry as the elected representative in Constituency #11.
- 2001: The Nevis Island Administration undertook the first phase of the road improvement project (Newcastle to Cotton Ground).
 - The Nevis Island Administration opened the Charlestown Waterfront Phase Two Project and unveiled the Christiana Disaster Monument.
- 2002: The Nevis Island Administration undertook the second phase of the road improvement project (Cotton Ground to Market Shop).
 - On September 19th the Newcastle Airport was renamed Vance W. Amory International Airport.
- 2003: The Nevis Island Administration renovated and upgraded the Alexandra Hospital.
- 2004: The newly built Combermere Primary School was officially opened and renamed the Violet O Jeffers-Nicholls Primary School on September 2nd.
 - Charlestown Post Office was officially reopened after months of renovation.
- 2005: The Prospect Primary School was renamed the Ivor Walters Primary School on 22nd September.
 - October, saw the appointment of the First Resident Judge for Nevis, Her Ladyship, Justice Ianthea Leigertwood-Octave.
- 2006: Opening of the Flamboyant Nursing Home.
 - The Nevis Reformation Party was elected to government after 14 years in opposition.
- 2007: The Hon. Malcolm Guishard, Leader of the Opposition in the Federal Parliament died.
 - Honourable Mark Brantley was elected in a bi-election replacing Malcolm Guishard. He became Leader of Her Majesty Loyal Opposition in the National Assembly.
 - Charlestown Secondary School new wing was commissioned.
 - Official launch of the Sea Bridge ferry services at Cades Bay.
 - Official launch of the Golden Grove Housing Community in Brown Hill.
- 2008: Drilling for Geothermal energy commenced on Nevis
 - St. John’s Primary School was commissioned
 - Official opening of Drag Race Strip in St. James Parish
 - Hurricane Omar caused severe damages and the closure of Four Season Hotel.
- 2009: St. Thomas Preschool in Jessups Village, was renamed the Inez France Preschool.
 - Nevis Netball Complex renamed after local netball pioneers Cicely Grell-Hull and Dora Stevens.
 - Official launch of the Harbour View Housing Development, in Ramsbury Site.
 - Preschoolers celebrate 25 years of Early Childhood Programme.
- 2010: Hon. Patrice Nisbett appointed as Attorney General in the Federal Government.
 - St. John’s Primary School was renamed the Elizabeth Pemberton Primary School.
 - Grove Park was renamed Elquemedo T. Willett Park.
 - Maddens Wind Farm in St. James Parish officially opened.
 - Implementation of Value Added Tax (VAT) in the Federation of St. Kitts and Nevis.
- 2011: Housing Project in Cherry Garden officially opened on 14th January.

- Nevis Reformation Party (NRP) was elected for a second term on 11th July.
- Placement of a Memorial Monument was unveiled at Bath Cemetery in remembrance of M V Christina Disaster on 5th August.
- On November 22nd Cape Air Airline offers service to Nevis.
- Runarko Shakur Morton, former Leeward Islands Cricketer died as a result of a motor vehicle accident in Trinidad on March 4th.
- 2012: The Nevis Performance Arts Center (NEPAC) officially opened on April 28th.
 - Honourable Simeon Daniel, Nevis' First Premier died on May 27th.
 - A landmark Election Petition Case was held at the Charlestown High Court, January 16 – 24th.
 - The first elected seat, Nevis 2, to be legally declared “Null and Void”.
 - Official opening of the Brown Hill Pharmacy in the Brown Hill Health Center.
 - The Court of Appeal up held its decision regarding the petition case.
 - In November, the NRP Administration dissolved parliament without setting an election date.
- 2013: January 22, Nevis Local Election. Concerned Citizens Movement won 3 of 5 seats.
 - Tradewind Aviation started operation from San Juan, Puerto Rico to Nevis on November 2nd.
 - November 27th, Belle Vue International School was renamed Nevis Academy under new management.
- 2014: January 15th, Seaborne Airlines began its airlift service between Nevis and Puerto Rico.
 - Samuel Hunkins Drive Waterfront was resurfaced on April 4th.
 - Special Education Unit in Nevis was renamed Cecele Thompson-Browne Integrated School on 29th April.
- 2015: February 3rd, Official opening and renaming of two major roads in Charlestown:-
The Hamilton Road which leads from Pump Road into Hamilton to the Carl Tucket Boulevard; and Pump Road which leads from the roundabout adjacent to the Bath Cemetery into the by-pass road to the Stuart Williams Drive.
 - February 20th, Caribbean Helicopters Limited started its operations from Nevis via Antigua.
 - February 22nd, Hon. Vance Amory, Premier of Nevis was sworn in as Senior Minister of Nevis Affairs, Minister of Labour, Social Security and Ecclesiastics Affairs in the National Assembly.
Mark A G Brantley Minister of Foreign Affairs and Aviation in the National Assembly.
 - April 7th, the removal of Value Added Tax (VAT) from all food items, medical supplies and funeral expenses.
- 2016: May-June, Rol-J Williams, a student of the Gingerland Secondary School receives the highest grade within the Federation of St. Christopher and Nevis with 17 CSEC passes and 17 Grade 1s.
 - July 20 – Opening ceremony of the newly constructed Social Security Building at Pinneys.
 - September 16th, Dr. Simeon Daniel was posthumous awarded as a National Hero of St. Kitts and Nevis.
 - October 28th, The Department of Information in the Nevis Island Administration (NIA) launched the digital platform of Nevis Television (NTV).
 - November 23rd, His Royal Highness Prince Harry made an official visit to Saint Kitts and Nevis.

- 2017: April 20th, A bust of the Rt Excellent Dr Sir Simeon Daniel, first Premier of Nevis and National Hero, was unveiled in Charlestown during an official ceremony. The bust is erected on the island main road in the vicinity of the Arthur Evelyn Building also known as the Nevis Tourism Authority (NTA) Building.
 - July 27th, Former Deputy Governor General of Nevis, His Hon Mr. Eustace John passed.
 - September 1st, Her Hon, Mrs. Marjorie Morton was sworn in as the Acting Deputy Governor General in Nevis. She is the 3rd person to hold that position and the first as a woman.
 - October 25th, First in the politics of Nevis' History, a baton of leadership has been passed from one serving member to another of the same political party. The Hon Vance Amory (then Premier of Nevis) and Political leader of the Concerned Citizens Movement, passed the baton and leadership to the Hon Mark Brantley (then Deputy Premier of Nevis).
 - December 18th, Nevis Island Local Election was held. The Concerned Citizens Movement won 4 of the 5 seats.
 - December 19th, the Hon Mark A.G. Brantley was sworn into office as the 3rd Premier for the island of Nevis.
- 2018: March 18th, the Official Opening of the Nevis Athletic Stadium (Mundo Track). The sporting facility, a 9-lane 400 meter track is the first of its product in the Caribbean and third in the world, following China and Brazil.
 - August 31st, Her Honour, Mrs. Hyleta Liburd was sworn in as the new Deputy Governor-General, replacing Mrs. Marjorie Morton who acted as Deputy Governor General during the period September 2017 to August 31, 2018.
 - October 21st, E Robelto Hector was elected as the 3rd Leader of the Nevis Reformation Party (NRP), one of the political parties in Nevis.
 - October 25th, The Custom Courier service which is housed in Daniel's Deck building on the corner of Government Road and the Island Main Road, was renamed as the Brian A David Customs Courier Facility.

Structure of the Nevis Island Administration

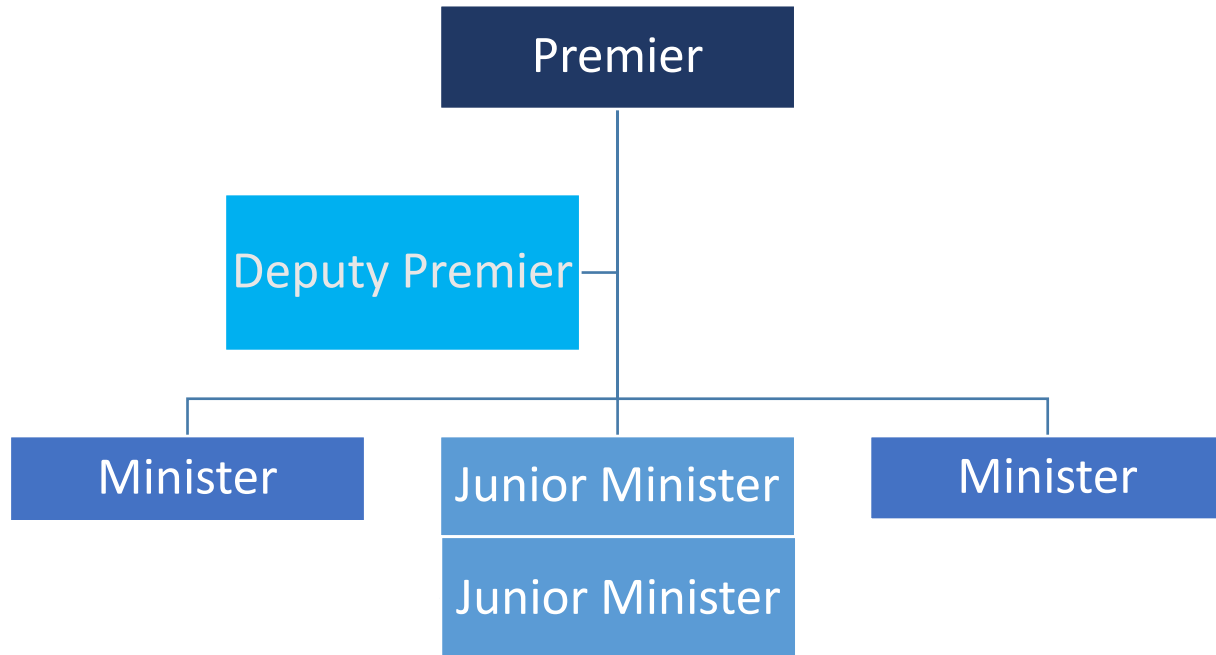
Modelled off the West-Minister System with a Constitution as the Supreme Law, the Federation of St. Christopher and Nevis has a democratically elected government with a unicameral structure of parliament. The uniqueness of the 1983 Constitution Order of St. Christopher and Nevis, gives credence for autonomy for the island of Nevis.



With five (5) single-member constituencies and a majority rule voting system for a period of five years term of assembly, the constitution allows for a composition of the Nevis Island Assembly. As such, there are eight (8) parliamentary members who are elected and/or nominated to serve.

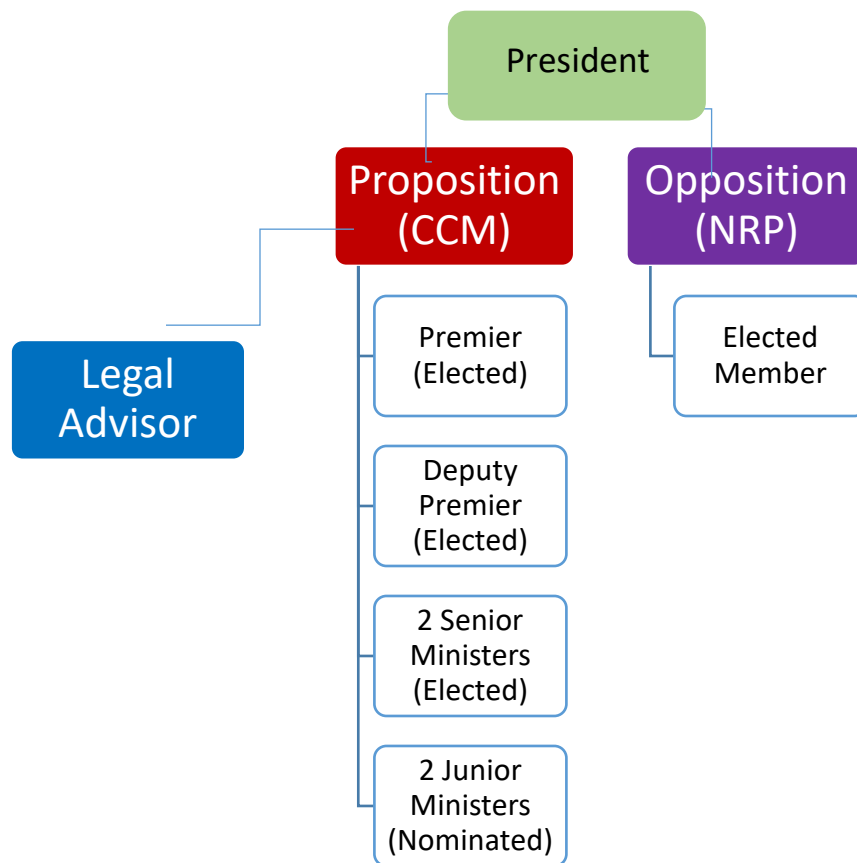
As a constitutional monarchy within the Commonwealth of Nations, the Federation recognizes Queen Elizabeth II (British Monarch) or her successor as the titular head of government. The Monarch is represented on the island of Nevis by a Deputy Governor General appointed by the Governor General (titular head) of the Federation, who is constitutionally responsible for the government of both islands.

Since the realization of Independence in 1983, the island of Nevis is governed by an administrative division known as the Nevis Island Administration.



Organisational chart displaying the composition of the Nevis Island Administration

Chart displaying the composition of the Nevis Island Assembly as at December 31, 2018



The Nevis Island Assembly has the authority to pass and or amend certain ordinances. When in session, the assembly is controlled by the President, who is presently, His Hon Mr. Farrell Smithen. He once held the position of Clerk of the Assembly from 1997 to 2003.

The Deputy Governor General is responsible for delivering the throne speech at the first sitting of the assembly following an election process. Presently, Her Honour, Mrs. Hyleta Liburd is the Deputy Governor General. She was sworn into office on August 31st, 2018. She has continued to hold the position at the end of 2018.

The Ministers of the Nevis Island Administration and their portfolios are listed in the below tables; and also the member of the Opposition who was elected and is the representative for that constituency.

Since obtaining independence as a Federation, the island of Nevis has participated in 16 elections by the end of December 2018. These elections comprised of 8 Federal Elections and 8 Local Elections. The charts below exhibit the two political parties, the Concerned Citizen Movement (CCM) and the Nevis Reformation Party (NRP) that contested these elections.

Table 1.1: Members of the Nevis Island Administration and their portfolios as at December 31, 2018

<i>Name of Minister</i>	<i>Area Representing</i>	<i>Portfolios</i>
Mark A. G. Brantley	Elected representative for St. John Constituency, (Nevis 2)	Premier and Minister of Finance, Statistics, Economic Planning, Education & Library Services, Trade, Industry & Consumer Affairs, Human Resources, Tourism, Health, Information Technology, Public Utilities & Energy and Foreign Investment.
Alexis A. Jeffers	Elected representative for St. James Constituency, (Nevis 4)	Deputy Premier and Minister of Agriculture, Land, Housing, Cooperatives and Fisheries, Natural Resources and Disaster Management.
Eric R. Evelyn	Elected representative for St. George Constituency, (Nevis 5)	Minister of Culture, Youth, Sports, Social Development, Community Development, Telecommunications & Information.
Spencer R. Brand	Elected representative for St. Paul Constituency, (Nevis 1)	Minister of Labour, Public Works, Physical Planning, Post and the Environment.
U. Troy Liburd	Nominated member of Government	Junior Minister in the Premier's Ministry with special responsibilities for Education and Library Services and Information Technology.
Hazel Brandy-Williams	Nominated member of Government	Junior Minister in the Premier's Ministry with special responsibilities for Health and Gender Affairs.

Table 1.2: Member of the Opposition as at December 31, 2018

<i>Name</i>	<i>Area Representing</i>	<i>Position</i>
Joseph W Parry	Elected representative for St. Thomas Constituency, (Nevis 3)	No portfolio/Member of Parliament

Table 1.3: Political parties contested the Nevis Island Elections 1987 - 2018

<i>Nevis Island Election (1987 - 2017)</i>									
<i>Year</i>		<i>1987</i>	<i>1992</i>	<i>1997</i>	<i>2001</i>	<i>2006</i>	<i>2011</i>	<i>2013</i>	<i>2017</i>
<i>Party</i>	CCM	1	3	3	4	2	2	3	4
	NRP	2	2	2	1	3	3	2	1
Total Seats		3	5	5	5	5	5	5	5

Table 1.4: Nevis political parties contested the Federal Elections, 1984 - 2018

<i>Federal Election (1984 - 2015)</i>									
<i>Year</i>		<i>1984</i>	<i>1989</i>	<i>1993</i>	<i>1995</i>	<i>2000</i>	<i>2004</i>	<i>2010</i>	<i>2015</i>
<i>Party</i>	CCM	**	1	2	2	2	2	2	2
	NRP	3	2	1	1	1	1	1	1
Seats won		3	3	3	3	3	3	3	3

** In 1984, when the island of Nevis participated in the Federal Election, there was only one political party established - the Nevis Reformation Party (NRP).

Table 1.5: Federal Elections results for Nevis, 1995-2010

<i>Year</i>	1995					
	<i>Registered Voters</i>	<i>Voters Cast</i>	<i>Spoiled/Rejected</i>	<i>% Voted</i>	<i>CCM Party</i>	<i>NRP Party</i>
<i>Constituency 9</i>	2,520	1,352	6	53.7	722	624
<i>Constituency 10</i>	1,416	788	7	55.6	581	200
<i>Constituency 11</i>	2,071	1,173	2	56.6	474	697
<i>Year</i>	2000					
	<i>Registered Voters</i>	<i>Voters Cast</i>	<i>Spoiled/Rejected</i>	<i>% Voted</i>	<i>CCM Party</i>	<i>NRP Party</i>
<i>Constituency 9</i>	2,924	1,608	4	55.0	808	796
<i>Constituency 10</i>	1,517	743	4	49.0	555	184
<i>Constituency 11</i>	2,430	1,269	1	52.2	538	730
<i>Year</i>	2004					
	<i>Registered Voters</i>	<i>Voters Cast</i>	<i>Spoiled/Rejected</i>	<i>% Voted</i>	<i>CCM Party</i>	<i>NRP Party</i>
<i>Constituency 9</i>	3,918	1,853	6	47.3	986	861
<i>Constituency 10</i>	1,639	662	4	40.4	498	160
<i>Constituency 11</i>	2,659	1,168	3	43.9	498	667
<i>Year</i>	2010					
	<i>Registered Voters</i>	<i>Voters Cast</i>	<i>Spoiled/Rejected</i>	<i>% Voted</i>	<i>CCM Party</i>	<i>NRP Party</i>
<i>Constituency 9</i>	4,295	3,356	6	78.1	1,749	1,601
<i>Constituency 10</i>	1,110	8,90	0	80.2	665	225
<i>Constituency 11</i>	2,146	1,696	3	79.0	714	979
<i>Year</i>	2015					
	<i>Registered Voters</i>	<i>Voters Cast</i>	<i>Spoiled/Rejected</i>	<i>% Voted</i>	<i>CCM Party</i>	<i>NRP Party</i>
<i>Constituency 9</i>	6,129	3,768	20	61.5	2,033	1,715
<i>Constituency 10</i>	1,393	1,063	3	76.3	754	306
<i>Constituency 11</i>	3,584	2,425	6	67.7	1,164	1,255

Source: Statistics Office St. Kitts and Statistics Office Nevis

Table 1.6: Nevis Local Election Results for 2015

<i>Electoral District</i>	<i>Parish</i>	<i>Voters Allocated</i>	<i>Voters %</i>	<i>Votes Cast</i>	<i>Voter Turnout (%)</i>	<i>Leading/Winning Candidate</i>	<i>Winner - Votes Received</i>	<i>Party Affiliation</i>
Nevis 1	St Paul's	1,869	18	1,370	73	HECTOR, E Robelto	730	NRP Candidate
Nevis 2	St John's	3,600	35	2,957	82	BRANTLEY, Mark	1,584	CCM Candidate
Nevis 3	St George's	1,500	15	916	61	AMORY, Vance	713	CCM Candidate
Nevis 4	St James'	1,800	18	1,745	97	JEFFERS, Alexis	980	CCM Candidate
Nevis 5	St Thomas'	1,381	14	758	55	PARRY, Joseph	518	NRP Candidate
		10,150	100%	7,746	76			

Source: Electoral Office, Nevis

Table 1.7: Nevis Local Election Results for 2017

<i>Electoral District</i>	<i>Parish</i>	<i>Voters Allocated</i>	<i>Voters %</i>	<i>Votes Cast</i>	<i>Voter Turnout (%)</i>	<i>Leading/Winning Candidate</i>	<i>Winner - Votes Received</i>	<i>Party Affiliation</i>
Nevis 1	St Paul's	2,025	18%	1,196	59%	BRAND, Spencer	596	CCM Candidate
Nevis 2	St John's	3,909	35%	2,371	61%	BRANTLEY, Mark	1,334	CCM Candidate
Nevis 3	St George's	1,650	15%	1,000	61%	EVELYN, Eric	761	CCM Candidate
Nevis 4	St James'	2,338	21%	1,368	59%	JEFFERS, Alexis	833	CCM Candidate
Nevis 5	St Thomas'	1,381	12%	758	55%	PARRY, Joseph	518	NRP Candidate
		11,303	100%	6,693	59%			

Source: Electoral Office, Nevis

Section 2 - Population & Vital Statistics

Table 2:1: Census Day and Population Growth, 1871 – 2011, Source: Stats Office, SK/Nevis

Census Day and Population, 1871 - 2011												
2 nd April 1871	4 th April 1881	5 th April 1889	7 th April 1901	2 nd April 1911	24 th April 1921	9 th April 1946	7 th April 1960	7 th April 1970	12 th April 1980	12 th May 1991	13 th May 2001	15 th May 2011
11,703	11,864	13,087	12,774	12,945	11,559	11,388	12,750	11,140	9,428	8,794	11,108	12,277

Table 2:2: Inter-Censal Population Growth, 1871 – 2011, Source: Stats Office, SK/Nevis

Census Year	Population	Population Growth	Inter-Censal change (%)	Annual Average rate of change (%)
1871	11,703	-	-	-
1881	11,864	161	1.4	0.14
1889	13,087	1223	10.3	1.03
1901	12,774	-313	-2.39	-0.24
1911	12,945	171	1.37	0.13
1921	11,559	-1376	-10.63	-1.06
1946	11,388	-181	-1.56	-0.15
1960	12,750	1382	12.14	0.87
1970	11,140	-1630	-12.76	-1.28
1980	9,428	-1712	-15.37	-1.54
1991	8,794	-634	-6.72	-0.67
2001	11,108	2314	26.31	2.63
2011	12,277	1,169	10.52	1.05

Table 2:3: Population by Parish per Census, 1871 – 2011, Source: Stats Office, SK/Nevis

Year	St. Paul	St. John	St. George	St. Thomas	St. James
1871	2,034	2,492	3,285	2,036	1,856
1881	1,532	2,506	3,683	2,101	2,042
1889	1,563	2,822	4,172	2,162	2,368
1901	1,383	2,537	4,186	1,977	2,691
1911	1,337	2,825	4,414	1,856	2,513
1921	1,158	2,531	4,052	1,636	2,192
1946	1,806	2,373	3,355	1,546	2,308
1960	1,530	3,106	3,092	2,390	2,652
1970	1,469	2,622	2,778	2,149	2,122
1980	1,243	2,224	2,295	1,975	1,691
1991	1,411	2,191	2,086	1,613	1,493
2001	1,790	2,901	2,564	2,047	1,806
2011	1,847	3,827	2,496	2,069	2,038

Table 2:4: Population by Parish & Sex, 2001 and 2011 Source: Stats Office, SK/Nevis

Parish	2001 Census			2011 Census			Difference 2011/2001
	Male	Female	Both Sexes	Male	Female	Both Sexes	
St. Paul	883	907	1,790	906	941	1,847	57
St. John	1,414	1,487	2,901	1,854	1,973	3,827	926
St. George	1,248	1,316	2,564	1,242	1,254	2,496	-68
St. Thomas	997	1,050	2,047	1,083	986	2,069	22
St. James	881	925	1,806	1,041	997	2,038	232
Total	5,423	5,685	11,108	6,126	6,151	12,277	1,169

Table 2:5: Population by Parish & Sex, Percentage Change 2001/2011 Source: Stats Office, SK/Nevis

Population of Nevis by Sex, 2001 and 2011 Census					
				Change	Change (%)
Year		2001	2011	2001-2011	2001-2011
	Total	11,108	12,277	1,169	10.5
	Male	5,423	6126	703	13.0
	Female	5,685	6151	466	8.2

Table 2:6: Comparison between males & females and percentage distribution, Census 2011

Population				Percentage Distribution		
Age Group	Male	Female	Total	Male	Female	Average
0 to 14	1,230	1,312	2,542	20.0	21.0	21.0
15 to 24	972	977	1,948	16.0	16.0	16.0
25 to 54	2,874	2,711	5,585	47.0	44.0	45.0
55 to 64	544	435	979	9.0	7.0	8.0
64 and over	506	717	1,223	8.0	12.0	10.0
Total	6,126	6,152	12,277	100.0	100.0	100.0

Source: Stats Office, SK/Nevis

Table 2:7: Comparison between household sizes and density per parish, 2001 and 2011

Parish	2001 Census			2011 Census		
	Number of households	Average household size	Population density (km2)	Number of households	Average household size	Population density (km2)
St. Paul	592	3.0	345.6	650	2.8	356.6
St. John	974	3.0	160.0	1369	2.8	211.1
St. George	856	3.0	123.7	893	2.8	120.5
St. James	668	2.7	58.1	881	2.3	65.6
St. Thomas	742	2.8	112.9	834	2.5	114.1

Source: Stats Office, SK/Nevis

Table 2.8: Population by Age Group per Parish, Census 2001

Age Group	PARISHES					Total
	St Paul	St John	St George	St Thomas	St James	
<i>Both Sexes</i>	<i>1,790</i>	<i>2,901</i>	<i>2,564</i>	<i>2,047</i>	<i>1,806</i>	<i>11,108</i>
<i>0-4</i>	<i>172</i>	<i>237</i>	<i>234</i>	<i>199</i>	<i>122</i>	<i>964</i>
<i>5-9</i>	<i>148</i>	<i>268</i>	<i>242</i>	<i>190</i>	<i>176</i>	<i>1,024</i>
<i>10-14</i>	<i>146</i>	<i>293</i>	<i>241</i>	<i>197</i>	<i>138</i>	<i>1,015</i>
<i>15-19</i>	<i>144</i>	<i>229</i>	<i>200</i>	<i>150</i>	<i>135</i>	<i>858</i>
<i>20-24</i>	<i>151</i>	<i>220</i>	<i>171</i>	<i>129</i>	<i>114</i>	<i>785</i>
<i>25-29</i>	<i>165</i>	<i>216</i>	<i>193</i>	<i>172</i>	<i>132</i>	<i>878</i>
<i>30-34</i>	<i>164</i>	<i>244</i>	<i>226</i>	<i>186</i>	<i>149</i>	<i>969</i>
<i>35-39</i>	<i>113</i>	<i>256</i>	<i>224</i>	<i>181</i>	<i>155</i>	<i>929</i>
<i>40-44</i>	<i>142</i>	<i>235</i>	<i>183</i>	<i>157</i>	<i>161</i>	<i>878</i>
<i>45-49</i>	<i>115</i>	<i>155</i>	<i>145</i>	<i>117</i>	<i>111</i>	<i>643</i>
<i>50-54</i>	<i>85</i>	<i>114</i>	<i>85</i>	<i>64</i>	<i>68</i>	<i>416</i>
<i>55-59</i>	<i>57</i>	<i>89</i>	<i>72</i>	<i>50</i>	<i>73</i>	<i>341</i>
<i>60-64</i>	<i>46</i>	<i>70</i>	<i>78</i>	<i>63</i>	<i>54</i>	<i>311</i>
<i>65-69</i>	<i>44</i>	<i>86</i>	<i>62</i>	<i>63</i>	<i>42</i>	<i>297</i>
<i>70-74</i>	<i>32</i>	<i>69</i>	<i>79</i>	<i>49</i>	<i>59</i>	<i>288</i>
<i>75-79</i>	<i>22</i>	<i>56</i>	<i>47</i>	<i>36</i>	<i>49</i>	<i>210</i>
<i>80-84</i>	<i>21</i>	<i>43</i>	<i>51</i>	<i>26</i>	<i>30</i>	<i>171</i>
<i>85+</i>	<i>23</i>	<i>21</i>	<i>31</i>	<i>18</i>	<i>38</i>	<i>131</i>

Source: Department of Statistics, Nevis and the Statistics Division, St. Kitts

Table 2:9: Population by Age Group per Parish, Census 2011

Age Group (Both Sexes)	St Paul	St John	St George	St Thomas	St James	Total
0-4	104	245	110	83	88	630
5-9	134	298	172	140	120	864
10-14	170	354	210	176	138	1,048
15-19	150	306	230	180	158	1,024
20-24	136	288	198	131	172	925
25-29	141	248	179	146	131	845
30-34	150	270	181	129	150	880
35-39	163	308	176	194	137	978
40-44	125	272	194	174	159	924
45-49	106	307	203	177	141	934
50-54	155	299	194	225	150	1,023
55-59	97	195	141	84	160	677
60-64	52	84	56	67	43	302
65-69	60	96	61	34	94	345
70-74	27	69	51	35	64	246
75-79	32	77	56	43	38	246
80-84	17	43	37	15	30	142
85+	28	68	47	36	65	244
Total	1,847	3,827	2,496	2,069	2,038	12,277

Source: Department of Statistics, Nevis and the Statistics Division, St. Kitts

Table 2:10: Population by Age 85 and over and by Parish, Census 2011

Parish	85	86	87	88	89	90	91	92	93	94	95	96	97	98	99	103	104	Total
St. Paul	0	6	3	0	10	0	3	2	0	0	2	1	1	0	0	0	0	28
St. John	8	15	3	3	16	4	3	2	2	10	0	0	1	0	0	1	0	68
St. George	5	7	4	1	14	2	2	1	1	4	3	0	1	0	1	0	1	47
St. Thomas	8	3	0	3	14	1	0	1	0	6	0	0	0	0	0	0	0	36
St. James	2	5	4	5	15	0	18	3	2	6	1	0	2	1	1	0	0	65
Total	23	36	14	12	69	7	26	9	5	26	6	1	5	1	2	1	1	244

Source: Department of Statistics, Nevis

Table 2:11: Population by Age Group 85+, Parish and Sex, Census 2011

<i>Parish</i>	<i>Gender</i>		<i>Total</i>
	<i>Male</i>	<i>Female</i>	
<i>St. Pauls</i>	5	23	28
<i>St. John</i>	20	48	68
<i>St. George</i>	13	34	47
<i>St. Thomas</i>	17	19	36
<i>St. James</i>	26	39	65
<i>Total</i>	81	163	244

Source: Stats Office, SK/Nevis

Table 2:12: Nevis Population by Ethnicity, Sex, Frequency & Percentage for Census 2011

<i>Ethnic Groups, (Census 2011)</i>					
		<i>Male</i>	<i>Female</i>	<i>Frequency</i>	<i>Percent</i>
<i>Valid</i>	<i>African/Negro/Black</i>	5,258	5,298	10,556	86.0
	<i>Chinese</i>	22	13	35	.3
	<i>East Indian</i>	383	338	721	5.9
	<i>Hispanic</i>	90	106	196	1.6
	<i>Indigenous people</i>	1	1	2	.0
	<i>Mixed</i>	166	204	370	3.0
	<i>Portuguese</i>	2	2	4	.0
	<i>Syrian/Lebanese</i>	5	3	8	.1
	<i>White/Caucasian</i>	173	168	341	2.8
	<i>Other</i>	26	18	44	.4
<i>Total</i>		6,126	6,151	12,277	100.0

Source: Stats Office, SK/Nevis

Table 2:13: Population by Religion and Sex, Census 2011, Stats Office, SK/Nevis

Population by Religion and Sex				
	Male	Female	Total	Percentage
Anglican	920	910	1,830	14.9
Baptist	192	224	416	3.4
Bahai	4	2	6	0.0
Brethren	145	161	306	2.5
Church of God	596	684	1,280	10.4
Evangelical	71	95	166	1.4
Hindu	204	194	398	3.2
Jehovah Witness	86	116	202	1.6
Methodist	1060	1028	2,088	17.0
Moravian	13	11	24	0.2
Muslim	53	29	82	0.7
Pentecostal	626	769	1,395	11.4
Presbyterian	23	27	50	0.4
Rastafarian	90	18	108	0.9
Roman Catholic	225	247	472	3.8
Salvation army	1	0	1	0.0
Seventh Day Adventist	401	447	848	6.9
Wesleyan Holiness	480	608	1,088	8.9
None	691	310	1,001	8.2
Other	245	270	515	4.2
Not stated	0	1	1	0.0
Total	6,126	6,151	12,277	100.0

Table 2:15: Median Age by Parish and Sex, Census 2001/2011 Stats Office, SK/Nevis

Median Age by Parish and Sex, 2001 and 2011							
	2001				2011		
	Male	Female	Total		Male	Female	Total
Nevis	30	30	30		34	34	34
St. Paul	28	29	28		32	33	32
St. George	30	29	30		34	32	33
St. Thomas	30	29	29		35	36	36
St. James	32	33	33		37	36	37
St. John	29	29	29		32	33	32

Vital Statistics – (birth, death, infant mortality) (Source: Nevis' Health Promotion Unit)

Table 2.15: Nevis Births – Live, Crude and by Sex, 2010 – 2018

Year	2010		2011		2012		2013		2014		2015		2016		2017		2018	
	F	M	F	M	F	M	F	M	F	M	F	M	F	M	F	M	F	M
Births	61	63	48	65	63	63	64	47	44	59	61	44	49	68	51	47	57	51
Total Births	124		113		126		111		103		105		117		98		108	
Total Live Births	123		109		125		110		102		102		115		98		105	
Crude Birth Rate	9.8		9.9		11.0		9.7		9.0		8.7		9.7		7.7		8.5	
Crude Live Birth Rate	9.9		9.5		11.0		9.6		8.9		8.5		9.6		7.7		8.3	

Table 2.16: Nevis Deaths and Crude Death Rate, 2010 – 2018

Year	2010		2011		2012		2013		2014		2015		2016		2017		2018	
Death	F	M	F	M	F	M	F	M	F	M	F	M	F	M	F	M	F	M
	43	48	37	58	44	39	44	48	43	52	49	59	47	52	43	53	43	57
Total	91		95		83		92		95		108		99		96		100	
Crude Death Rate	7.3		8.3		7.4		8.1		8.1		8.7		8.2		7.4		7.9	

Table 2.17: Infant Mortality/Mortality Rate and Still Birth/Still Birth Rate, 2010 – 2018

Year	Total Infant Mortality	Total Infant Mortality Rate (per 1,000 live births)	Total Still Birth	Total Still Birth Rate (per 1,000 birth)
2010	2	16.4	1	8.1
2011	0	-	4	35.4
2012	2	16.0	1	7.9
2013	1	9.1	1	9.0
2014	1	9.8	2	19.4
2015	4	39.2	3	28.6
2016	3	26.1	2	28.6
2017	0	-	0	-
2018	1	9.5	3	27.8

Table 2.18: Teenage Pregnancies by age, 2010 - 2018 (Source: Nevis' Health Promotion Unit)

AGE	YEAR								
	2010	2011	2012	2013	2014	2015	2016	2017	2018
13	0	0	0	0	0	0	0	0	0
14	1	0	0	0	0	1	0	0	1
15	0	0	3	0	0	0	0	0	0
16	1	0	1	2	0	1	2	0	0
17	5	4	3	0	2	3	1	3	3
18	3	3	6	6	3	3	5	5	1
19	3	5	8	4	4	6	6	4	5
Total	13	12	21	12	9	14	14	12	10

Table 2.19: Teenage Birth and Teenage Birth Rate, 2010 - 2018 (Source: Nevis' Health Unit)

Year	Total Teenage Births	Total Teenage Live Births	Total Teenage Birth Rate (100 birth)	Total Teenage Birth Rate (100 live birth)
2010	13	13	10.5	10.6
2011	12	12	10.6	11.0
2012	21	21	16.8	16.8
2013	15	15	13.5	13.6
2014	9	9	8.7	8.8
2015	14	13	13.3	12.7
2016	14	14	12.0	12.2
2017	12	12	n/a	n/a
2018	10	10	n/a	n/a

Table 2.20: Location where Marriages took place in Nevis, 2010 – 2018 (Source: Ministry of Health, Nevis)

Location	Year								
	2010	2011	2012	2013	2014	2015	2016	2017	2018
Church	25	38	38	31	37	65	39	n/a	38
Court House	9	12	13	14	16	11	21	n/a	21
Hotel	34	37	31	25	29	28	20	n/a	21
Others	24	11	24	14	5	12	16	n/a	16
Total	92	98	106	84	87	116	96	n/a	96

Table 2.21: Marriages per Parish, 2012 - 2018 (Source: Registry Office, Nevis)

Parish	Year						
	2012	2013	2014	2015	2016	2017	2018
St. Paul	18	23	22	20	33	27	27
St. John	19	17	11	20	21	13	20
St. James	15	11	11	19	15	12	18
St. George	8	5	40	5	4	4	3
St. Thomas	46	32	3	28	28	25	28
Total	106	88	87	92	101	81	96

Table 2.22: Places of Marriage broken down, 2012 - 2018 (Source: Registry Office, Nevis)

Place of Marriage	2012	2013	2014	2015	2016	2017	2018
Anglican Churches	4	4	5	3	1	n/a	1
Baptist Churches	0	1	1	0	3	"	2
Bethel Apostolic Church	0	0	0	2	1	"	1
Church of Christ	1	0	0	1	1	"	1
Church of God	5	4	3	11	18	"	11
Church of God of Prophecy	3	1	0	3	0	"	0
Hotel (Pastor)	14	14	19	16	14	"	8
Hotel (Magistrate)	17	11	10	12	11	"	13
Jehovah Witness	1	0	1	0	0	"	0
Magistrates Office	13	18	16	11	21	"	21
Methodist Churches	2	6	3	4	1	"	1
New Testament Church	5	4	12	0	0	"	0
Other (Beach, Residence, etc.)	24	14	5	12	13	"	16
Other Denomination	9	0	0	0	1	"	4
Pentecostal	3	6	8	9	11	"	11
Roman Catholic	0	1	1	1	0	"	0
Seventh Day Adventist	1	3	0	3	2	"	2
Wesleyan Holiness	4	1	3	4	3	"	4
Total	106	88	87	92	101	"	96

Table 2.23: Number of Absolute Decree (Divorce) granted, 2010 - 2018 (Source: Registry Office, Nevis)

Year	Duration of Marriage prior to divorces being granted, 2010 - 2018						Total divorces granted
	0-4	5-9	10-14	15-19	20-24	25+	
2010	0	6	7	3	2	2	20
2011	0	0	3	4	0	4	11
2012	2	2	5	5	2	1	17
2013	2	4	8	2	1	0	17
2014	1	5	7	3	3	4	23
2015	3	10	4	3	2	1	23
2016	0	4	8	4	4	2	22
2017	5	9	7	5	2	4	32
2018	5	6	9	2	3	3	28

Section 3 - Infrastructure

Table 3.1: Number of Households per decade, 1970 – 2011 (Source: Statistics Department, SK/Nevis)

Area	Household per decade from 1970 - 2011				
	1970	1980	1991	2001	2011
St. Paul	387	368	460	592	650
St. John	591	593	663	974	1,369
St. George	658	600	601	856	893
St. Thomas	509	527	485	742	834
St. James	484	455	477	668	881
Total	2,629	2,543	2,686	3,832	4,627

Table 3.2: Number of Building Permits issued by Sector, 2010-2018 (Source: Physical Planning, Nevis)

Sectors	2010	2011	2012	2013	2014	2015	2016	2017	2018
Residential	167	169	206	122	167	165	159	198	215
Residential Villa	1	0	2	7	7	1	6	9	8
Residential/ Apartment	8	4	5	7	5	2	0	2	3
Commercial	24	29	19	26	22	11	32	19	49
Commercial/Residential	1	0	0	0	0	2	2	0	5
Industrial	0	2	0	0	2	0	0	0	0
Institutional	4	7	7	3	11	11	9	6	0
Hotel/Tourism	11	1	0	6	4	0	1	1	0
Other	7	5	2	12	3	4	4	5	2
Total	223	217	241	183	221	196	213	240	282

Table 3.3: Number of Building Permits issued per annum, 2010-2018 (Source: Physical Planning, Nevis)

Year	New Erections	Additions and Renovations	Removals	*Change of Use	Fencing	Pool	Other
2010	146	45	5	1	17	1	8
2011	136	44	6	1	23	1	6
2012	158	54	9	0	14	1	5
2013	120	30	3	0	18	5	7
2014	140	43	5	0	16	3	4
2015	126	39	7	0	20	2	2
2016	123	46	10	1	21	7	5
2017	165	47	6	1	12	2	7
2018	167	77	2	0	20	0	16
Total	1,281	425	53	4	161	22	60

* Change of use – usage of structure was changed from one purpose to another

Table 3.4: Certificate of Titles registered at the Registry in Nevis, 2010-2018 (Supreme Court, Charlestown)

Year	2010	2011	2012	2013	2014	2015	2016	2017	2018
	409	389	355	370	333	346	411	316	341

Table 3.5: Building started Construction by Type, 2013-2018 (Source: Physical Planning, Nevis)

<i>Type</i>	<i>2013</i>	<i>2014</i>	<i>2015</i>	<i>2016</i>	<i>2017</i>	<i>2018</i>
<i>Residential</i>	<i>88</i>	<i>78</i>	<i>80</i>	<i>77</i>	<i>110</i>	<i>105</i>
<i>Commercial</i>	<i>5</i>	<i>8</i>	<i>10</i>	<i>14</i>	<i>7</i>	<i>15</i>
<i>Villas</i>	<i>8</i>	<i>14</i>	<i>11</i>	<i>5</i>	<i>5</i>	<i>6</i>
<i>Apartments</i>	<i>3</i>	<i>3</i>	<i>1</i>	<i>0</i>	<i>0</i>	<i>2</i>
<i>Institutional</i>	<i>1</i>	<i>3</i>	<i>1</i>	<i>9</i>	<i>9</i>	<i>4</i>
<i>Industrial</i>	<i>1</i>	<i>1</i>	<i>3</i>	<i>0</i>	<i>0</i>	<i>0</i>
<i>Government</i>	<i>4</i>	<i>0</i>	<i>2</i>	<i>1</i>	<i>1</i>	<i>3</i>
<i>Swim Pools</i>	<i>4</i>	<i>1</i>	<i>2</i>	<i>1</i>	<i>1</i>	<i>0</i>
<i>Totals</i>	<i>114</i>	<i>108</i>	<i>110</i>	<i>107</i>	<i>133</i>	<i>135</i>

Table 3.6: Type of Deeds registered at the Registry in Nevis, 2010-2018 (Source: Supreme Court, Charlestown)

<i>Type of Deed</i>	<i>2010</i>	<i>2011</i>	<i>2012</i>	<i>2013</i>	<i>2014</i>	<i>2015</i>	<i>2016</i>	<i>2017</i>	<i>2018</i>
<i>Conveyance</i>	<i>63</i>	<i>44</i>	<i>53</i>	<i>54</i>	<i>51</i>	<i>45</i>	<i>34</i>	<i>42</i>	<i>50</i>
<i>Gifts</i>	<i>7</i>	<i>14</i>	<i>8</i>	<i>8</i>	<i>12</i>	<i>5</i>	<i>11</i>	<i>17</i>	<i>8</i>
<i>Vesting</i>	<i>7</i>	<i>18</i>	<i>8</i>	<i>8</i>	<i>5</i>	<i>14</i>	<i>7</i>	<i>12</i>	<i>32</i>
<i>Assent</i>	<i>10</i>	<i>17</i>	<i>10</i>	<i>10</i>	<i>19</i>	<i>26</i>	<i>22</i>	<i>50</i>	<i>14</i>
<i>Reconveyance</i>	<i>15</i>	<i>16</i>	<i>17</i>	<i>19</i>	<i>12</i>	<i>10</i>	<i>13</i>	<i>19</i>	<i>12</i>
<i>Mortgage</i>	<i>36</i>	<i>37</i>	<i>43</i>	<i>45</i>	<i>20</i>	<i>14</i>	<i>21</i>	<i>30</i>	<i>11</i>
<i>Debentures</i>	<i>1</i>	<i>1</i>	<i>1</i>	<i>1</i>	<i>0</i>	<i>0</i>	<i>0</i>	<i>0</i>	<i>2</i>
<i>Others</i>	<i>189</i>	<i>242</i>	<i>225</i>	<i>232</i>	<i>218</i>	<i>200</i>	<i>194</i>	<i>172</i>	<i>157</i>
<i>Total</i>	<i>328</i>	<i>389</i>	<i>365</i>	<i>377</i>	<i>337</i>	<i>314</i>	<i>302</i>	<i>342</i>	<i>286</i>

Table 3.7: Electricity Consumers & Electricity Production, 2010-2018 (Source: Nevis Electricity Company)

<i>Year</i>	<i>Consumer</i>					
	<i>Government</i>	<i>Domestic</i>	<i>Commercial</i>	<i>Gross Generation (mwh/h)</i>	<i>Maximum Demand</i>	<i>Load Factor</i>
<i>2010</i>	<i>173</i>	<i>5,772</i>	<i>792</i>	<i>50,851,480</i>	<i>8.39</i>	<i>69</i>
<i>2011</i>	<i>171</i>	<i>5,820</i>	<i>784</i>	<i>52,976,300</i>	<i>8.85</i>	<i>70</i>
<i>2012</i>	<i>182</i>	<i>5,735</i>	<i>787</i>	<i>53,540,470</i>	<i>8.61</i>	<i>70</i>
<i>2013</i>	<i>194</i>	<i>5,911</i>	<i>788</i>	<i>52,465,950</i>	<i>9.73</i>	<i>86</i>
<i>2014</i>	<i>178</i>	<i>6,025</i>	<i>806</i>	<i>52,327,588</i>	<i>8.63</i>	<i>66</i>
<i>2015</i>	<i>178</i>	<i>6,100</i>	<i>817</i>	<i>55,112,474</i>	<i>8.70</i>	<i>60</i>
<i>2016</i>	<i>198</i>	<i>6,137</i>	<i>775</i>	<i>58,764,234</i>	<i>8.81</i>	<i>62</i>
<i>2017</i>	<i>176</i>	<i>6,319</i>	<i>779</i>	<i>55,783,639</i>	<i>9.33</i>	<i>62</i>
<i>2018</i>	<i>178</i>	<i>6,381</i>	<i>852</i>	<i>57,718,704</i>	<i>9.31</i>	<i>60</i>

Table 3.8: Water Consumption (per gallon) by Consumers, 2010-2018 (Source: Water Department, NIA)

<i>Year</i>	CONSUMER				
	DOMESTIC	COMMERCIAL	FARMERS	IRRIGATION	GOVERNMENT
2010	236,634,050	33,905,120	4,319,570	38,484,000	12,500,000
2011	218,303,210	77,738,950	6,392,130	52,194,500	15,300,000
2012	223,485,503	65,057,025	5,424,890	44,189,895	13,000,000
2013	221,366,630	68,502,480	5,025,990	32,711,100	14,400,000
2014	243,561,420	81,684,089	5,480,570	28,966,300	9,030,496
2015	242,293,498	85,934,300	5,018,680	25,423,900	46,039,880
2016	258,151,260	71,455,660	5,121,280	27,320,400	37,522,801
2017	247,092,883	66,441,980	4,898,140	19,997,784	18,584,350
2018	258,432,614	72,969,080	4,881,030	14,232,800	28,131,582

Section 4 - *Transportation*

Table 4.1: Number of Vehicles Registered during the period 2010 - 2018 (Source: Traffic Department, RSCNPF)

<i>Category</i>	<i>Type of Vehicle</i>	<i>2010</i>	<i>2011</i>	<i>2012</i>	<i>2013</i>	<i>2014</i>	<i>2015</i>	<i>2016</i>	<i>2017</i>	<i>2018</i>
<i>Private Cars and Motorcycles</i>	<i>Private Cars</i>	136	140	156	168	198	277	391	437	292
	<i>Private Jeeps</i>	207	182	164	231	232	280	435	458	307
	<i>Motorcycles</i>	10	2	15	13	13	10	41	21	9
	<i>Motor Scooters</i>	9	8	11	8	4	11	15	16	6
	<i>Gulf Car</i>	5	4	5	1	6	0	7	10	10
	<i>Total</i>	367	336	351	421	453	578	889	942	624
<i>Public Service Vehicles (all types)</i>	<i>Motor Omnibuses (passenger bus)</i>	15	10	11	11	11	49	20	18	9
	<i>Taxi Cars</i>	2	0	2	2	4	0	0	0	0
	<i>Taxi Jeeps</i>	1	5	3	2	3	0	1	0	0
	<i>Taxi Buses</i>	3	3	3	8	4	15	8	15	15
	<i>Rental Cars</i>	0	14	4	3	2	5	22	27	44
	<i>Rental Pickups</i>	0	0	0	0	0	0	1	0	0
	<i>Rental Jeeps</i>	16	15	16	34	20	35	45	45	36
	<i>Rental Buses</i>	0	0	1	3	0	6	1	5	11
	<i>Rental Motorcycles</i>	0	1	0	0	0	9	1	9	2
	<i>GT Van</i>	0	0	0	0	0	0	0	0	1
	<i>Total</i>	37	48	40	63	44	119	99	119	118
<i>Commercial Vehicles (all types)</i>	<i>Lorries</i>	26	19	12	17	38	38	44	65	51
	<i>Vans</i>	19	28	23	18	27	32	72	71	68
	<i>Other/Jeeps</i>	2	1	0	6	5	1	0	0	0
	<i>Pickups</i>	53	49	38	55	54	65	70	70	72
	<i>Tractors</i>	0	2	2	1	0	1	0	1	5
	<i>Loaders</i>	1	2	0	0	1	0	1	0	0
	<i>Forklifts</i>	0	0	0	0	2	0	0	2	1
	<i>Backhoes</i>	0	1	0	6	6	2	7	9	11
	<i>Cranes</i>	0	0	0	3	0	0	0	0	1
	<i>Total</i>	101	102	75	106	133	139	194	218	209
	<i>Total</i>	505	486	466	590	630	836	1,182	1,279	951

Table 4.2: Number of vehicles licensed during the period 2010 – 2018 (Source Traffic Department, RSCNPF)

Category	Type of Vehicle	2010	2011	2012	2013	2014	2015	2016	2017	2018
Private Cars and Motorcycles	Private Cars	1,343	1,334	1,317	1,336	1,331	1,509	1,623	1,792	1,738
	Private Jeeps	1,828	1,805	1,845	1,896	1,857	1,979	2,242	2,497	2,423
	Motorcycles	22	20	21	22	28	28	47	37	27
	Motor Scooters	16	8	16	14	13	32	36	25	24
	Gulf Car	11	17	18	8	13	1	8	15	13
	Total	3,220	3,184	3,217	3,276	3,242	3,549	3,956	4,366	4,225
Public Service Vehicles (all types)	Motor Omnibuses	73	69	69	71	63	187	90	91	80
	Taxi Cars	11	22	16	23	22	2	1	0	0
	Taxi Jeeps	15	10	18	15	13	25	13	4	5
	Taxi Buses	47	45	40	47	50	73	45	73	75
	Rental Cars	57	45	42	41	44	38	61	66	93
	Rental Pickups	3	4	8	4	4	0	0	1	2
	Rental Jeeps	176	165	160	186	187	179	199	230	242
	Rental Buses	13	8	10	11	8	16	2	20	27
	Rental Motorcycles	1	4	3	3	2	13	18	19	8
	Total	396	372	366	401	393	533	429	504	532
Commercial Vehicles (all types)	Lorries	206	196	203	188	175	222	193	246	235
	Vans	156	154	157	134	170	160	229	298	305
	Other/Jeeps	70	79	63	90	76	0	0	0	0
	Pickups	614	607	566	551	576	590	574	560	538
	Tractors	12	3	1	1	1	0	8	3	3
	Loaders	8	6	4	3	1	1	1	5	3
	Forklifts	6	6	4	4	3	2	1	0	1
	Backhoes	27	26	19	22	17	17	15	21	29
	Cranes	8	5	5	2	7	6	8	7	4
	Total	1,107	1,082	1,022	995	1,026	998	1,029	1,140	1,118
	Total	4,723	4,638	4,605	4,672	4,661	5,080	5,414	6,010	5,875

Table 4.3: Number of vehicles Imported, 2012-2018 (Source: Customs Department)

Year	2012	2013	2014	2015	2016	2017	2018	Total
	123	153	191	385	380	471	425	2,128

Table 4.4: Results of Written Test, 2010-2018 (Source Traffic Dept., RSCNPF)

<i>Year</i>	<i>Number of Passes</i>	<i>Number Disqualified</i>	<i>Number of Failures</i>	<i>Total</i>
2010	232	0	366	598
2011	162	0	333	495
2012	165	0	317	482
2013	208	0	409	617
2014	233	0	397	630
2015	267	0	389	656
2016	161	0	617	778
2017	201	11	578	790
2018	181	13	513	707

Table 4.5: Results of Road Test, 2010-2018 (Source Traffic Dept., RSCNPF)

<i>Year</i>	<i>Number of Passes</i>	<i>Number of Failures</i>	<i>Total</i>
2010	222	431	653
2011	182	287	469
2012	195	340	535
2013	222	367	589
2014	237	353	590
2015	266	344	610
2016	276	285	561
2017	226	352	578
2018	338	456	794

Table 4.6: Results of Traffic Accidents recorded at the Traffic Department, 2010-2018

<i>Results of Accident</i>	<i>2010</i>	<i>2011</i>	<i>2012</i>	<i>2013</i>	<i>2014</i>	<i>2015</i>	<i>2016</i>	<i>2017</i>	<i>2018</i>
<i>Fatalities</i>	1	1	0	2	2	2	0	0	1
<i>Serious Injury</i>	7	6	6	5	7	3	4	16	5
<i>Slight Injury</i>	29	32	31	37	35	30	42	56	51
<i>Non-Injury</i>	251	196	180	193	201	237	250	290	256
<i>Total</i>	288	235	217	237	245	272	296	362	313

Source: Traffic Department of the Royal St. Christopher & Nevis Police Force, Division "C"

Table 4.7: Aircraft Movements via Vance W Amory International Airport per half year, 2010-2018

<i>Year</i>	<i>Per ½ Year</i>	<i>Arrival</i>	<i>Departure</i>	<i>Total</i>
2010	January-June	1,620	1622	3242
	July-December	1,726	1722	3448
	Total	3346	3344	6690
2011	January-June	1515	1516	3031
	July-December	1301	1298	2599
	Total	2816	2814	5630
2012	January-June	1663	1662	3325
	July-December	1402	1402	2807
	Total	3068	3064	6132
2013	January-June	1,626	1,629	3,255
	July-December	1,431	1,424	2,855
	Total	3,057	3,053	6,110
2014	January-June	1,821	1,819	3,640
	July-December	1,509	1,507	3,016
	Total	3,330	3,326	6,656
2015	January-June	2,090	2,090	4,180
	July-December	1,557	1,556	3,113
	Total	3,647	3,646	7,293
2016	January-June	1,974	1,971	3,945
	July-December	1,717	1,719	3,436
	Total	3,691	3,690	7,381
2017	January-June	1,819	1,824	3,643
	July-December	1,372	1,369	2,741
	Total	3,191	3,193	6,384
2018	January-June	1,394	1,399	2,793
	July-December	1,387	1,383	2,770
	Total	2,781	2,782	5,563

Source: Nevis Air & Sea Ports Authority

Table 4.8: Quarterly Cargo Movement (per tonnage) via the Sea Ports, 2010-2018

Year	Month	OIL Tonnage	Sand, stone, etc. Tonnage	Vehicle Tonnage	Vegetable Tonnage	Con. Tonnage	Brk Bulk Tonnage
2010	March	5,791	7,084	437	20	8,011	1,129
	June	4,257	6,117	299	263	7,763	255
	September	4,875	2,959	457	24	9,254	265
	December	3,241	8,040	133	22	10,790	557
	Total	18,164	24,200	1,326	329	35,818	2,206
2011	March	3,338	9,412	301	667	9,342	485
	June	4,780	17,785	453	719	7,585	375
	September	2,734	4,293	217	377	6,519	370
	December	4,100	3,031	262	426	8,755	425
	Total	14,952	34,521	1,233	2,189	32,201	1,655
2012	March	2,564	7,738	203	314	7,132	1,447
	June	3,286	7,957	204	240	6,828	477
	September	6,237	2,263	183	796	6,062	226
	December	2,512	8,548	198	109	10,432	393
	Total	14,599	26,506	788	1,459	30,454	2,543
2013	March	475	4,635	315	855	8,754	330
	June	3,918	5,834	168	561	8,340	293
	September	3,007	2,997	189	442	8,720	288
	December	6,735	3,309	356	686	9,693	348
	Total	14,135	16,775	1,028	2,544	35,507	1,259
2014	March	3,391	6,087	193	1,042	9,156	243
	June	5,331	4,179	728	1,197	9,605	258
	September	3,613	7,966	460	595	8,402	354
	December	5,931	7,739	456	1,281	10,296	384
	Total	18,266	25,971	1,837	4,115	37,459	1,239
2015	March	4,235	8,826	766	974	9,041	243
	June	3,484	9,260	422	855	8,443	193
	September	5,389	8,794	1,313	1,297	9,611	302
	December	6,707	3,193	1,135	1,198	10,996	425
	Total	19,815	30,073	3,636	4,324	38,091	1,163
2016	March	5,793	5,743	356	957	7,666	316
	June	8,258	7,121	921	1,003	8,598	792

	<i>September</i>	5,522	7,828	892	814	8,984	353
	<i>December</i>	6,062	3,895	605	1,212	9,889	392
	Total	25,635	24,587	2,774	3,986	35,137	1,853
2017	<i>March</i>	7,145	9,969	1,158	1,411	11,818	502
	<i>June</i>	7,756	9,535	580	1,092	12,535	504
	<i>September</i>	4,849	11,672	627	872	11,315	441
	<i>December</i>	10,155	10,982	402	936	12,112	179
	Total	29,905	42,158	2,767	4,311	47,780	1,626
2018	<i>March</i>	5,975	4,697	1,185	1,340	10,079	197
	<i>June</i>	4,466	10,223	682	1,116	10,430	245
	<i>September</i>	3,975	4,823	587	874	10,917	140
	<i>December</i>	7,969	9,039	503	1,010	12,073	276
	Total	22,385	33,237	2,957	4,340	43,499	858

Source: Nevis Air and Sea Ports Authority

Table 4.9: Cargo movements (lbs.) via Vance W Amory International Airport, 2010-2018

<i>Year</i>	<i>2010</i>	<i>2011</i>	<i>2012</i>	<i>2013</i>	<i>2014</i>	<i>2015</i>	<i>2016</i>	<i>2017</i>	<i>2018</i>
<i>Cargo IN</i>	146,661	182,222	158,680	170,505	186,124	198,583	194,320	175,233	172,055
<i>Cargo OUT</i>	22,940	23,194	22,059	19,493	22,719	21,111	25,007	15,936	16,373
Total Cargo	169,601	205,416	180,739	189,998	208,843	219,694	219,327	191,169	188,428

Source: Nevis Air and Sea Ports Authority

Section 5 – Tourism

Table 5.1: Number of Hotels, Rooms and Beds for the period, 2010-2018 (Source: NTA)

<i>Year</i>	<i>No. of Hotels</i>	<i>No. of Rooms</i>	<i>No. of Beds</i>
2010	7	196	301
2011	8	368	507
2012	8	386	530
2013	8	386	533
2014	8	386	530
2015	8	386	530
2016	8	398	542
2017	7	356	552
2018	8	366	590

Table 5.2: Accommodations for Stay-over Visitors, 2010-2018 (Source: Department of Statistics, Nevis)

<i>Accommodation</i>	<i>2010</i>	<i>2011</i>	<i>2012</i>	<i>2013</i>	<i>2014</i>	<i>2015</i>	<i>2016</i>	<i>2017</i>	<i>2018</i>
Hotel	1,798	3,265	2,920	3,219	3,307	2,635	3,135	2,494	1,602
Guest Houses	663	356	266	165	189	164	126	121	109
Apt/Villas	791	301	339	422	403	271	465	404	233
Other Accommodations	6,096	9,218	4,630	4,842	3,587	3,461	4,291	4,305	3,130

Table 5.3: Monthly Visitors Arrivals, 2010-2018 (Source: Statistics Department, Nevis)

<i>Month</i>	<i>2010</i>	<i>2011</i>	<i>2012</i>	<i>2013</i>	<i>2014</i>	<i>2015</i>	<i>2016</i>	<i>2017</i>	<i>2018</i>
January	690	824	763	1020	802	657	726	695	491
February	636	729	715	568	713	1,067	683	665	407
March	632	861	820	787	757	616	770	784	469
April	462	718	579	715	747	616	758	692	301
May	446	577	485	572	597	532	534	459	440
June	*	533	396	408	581	316	526	525	352
July	857	1,148	525	538	811	596	819	645	634
August	629	513	644	445	591	431	519	562	459
September	313	323	337	328	313	350	526	265	345
October	343	230	316	342	362	328	360	265	218
November	356	372	411	528	533	462	471	368	267
December	1,121	874	786	862	974	877	887	1,089	673
Total	6,485	7,702	6,777	7,113	7,781	6,848	7,579	7,014	5,056

Table 5.4: Visitors Arrivals during the Tourism Season, 2010/11 - 2017/18 (Source: Statistics Dept., Nevis)

Tourism Season – Visitors Arrivals								
Year 2010/2011 - 2017/2018								
Months	2010/2011	2011/2012	2012/2013	2013/2014	2014/2015	2015/2016	2016/2017	2017/2018
<i>September</i>	313	323	337	328	313	350	526	265
<i>October</i>	343	230	316	342	362	328	360	265
<i>November</i>	356	372	411	528	533	462	471	368
<i>December</i>	1,121	874	786	862	974	877	887	1,089
<i>January</i>	824	763	1,020	802	657	726	695	491
<i>February</i>	729	715	568	713	1,067	683	665	407
<i>March</i>	861	820	787	757	616	770	784	469
<i>April</i>	718	579	715	747	616	758	692	301
Total	3,906	4,676	4,940	5,079	5,138	4,954	5,080	3,655

Table 5.5: Visitors Arrival from traditional territories per annum, 2010-2018 (Source: Stats Dept., Nevis)

Year	USA	Canada	Europe	Caribbean	South America	Central America	Not Stated
2010	2,224	791	1,208	3,884	7	39	1,207
2011	4,943	1,048	1,896	4,582	57	21	651
2012	3,113	691	1,304	2,907	75	27	91
2013	3,761	662	913	2,921	30	13	368
2014	4,323	485	649	2,497	93	45	280
2015	3,133	345	872	2,610	50	13	261
2016	3,284	337	979	2,855	60	17	12
2017	2,797	289	706	3,073	58	18	30
2018	1,601	104	433	4,252	25	16	18

Table 5.6: Monthly Visitors Arrival from the United States of America, 2010-2018

Year	Month											
	Jan	Feb	Mar	Apr	May	Jun	Jul	Aug	Sept	Oct	Nov	Dec
2010	274	187	193	114	87	0	172	100	50	49	84	457
2011	424	361	446	253	259	250	173	110	51	68	119	341
2012	351	334	342	236	165	149	155	142	90	77	159	305
2013	516	417	594	416	278	190	188	134	116	156	281	476
2014	469	421	474	443	335	231	384	331	157	165	308	605
2015	422	485	389	301	229	134	188	181	155	160	220	450
2016	435	374	355	330	209	226	215	197	184	138	187	443
2017	333	272	399	266	251	225	246	143	91	58	158	377
2018	216	174	193	91	103	107	142	122	76	47	72	262

Source: Statistics Department, Nevis

Table 5.7: Monthly Visitors Arrival from the United Kingdom, 2010-2018

Year	Month											
	Jan	Feb	Mar	Apr	May	Jun	Jul	Aug	Sept	Oct	Nov	Dec
2010	82	103	131	56	32	0	15	20	30	37	83	185
2011	112	132	104	127	72	37	175	95	24	42	53	126
2012	103	134	70	43	45	24	21	58	20	33	48	57
2013	54	72	73	79	38	28	19	11	4	21	16	51
2014	38	15	40	23	8	8	17	8	16	12	13	34
2015	55	20	42	19	12	9	21	11	20	12	17	36
2016	39	46	57	50	21	16	30	19	11	9	27	49
2017	21	30	23	25	8	8	27	7	12	6	6	24
2018	33	17	21	22	8	4	14	3	12	2	2	27

Source: Statistics Department, Nevis

Table 5.8: Monthly Visitors Arrival from the Canadian Province, 2010-2018

Year	Month											
	Jan	Feb	Mar	Apr	May	Jun	Jul	Aug	Sept	Oct	Nov	Dec
2010	101	71	68	71	66	0	71	65	28	6	27	79
2011	81	90	62	59	58	17	28	42	42	11	35	87
2012	97	61	71	65	34	12	12	55	20	16	25	83
2013	110	36	43	59	62	11	19	38	23	14	23	63
2014	75	40	47	32	62	17	21	44	29	14	18	55
2015	40	56	23	21	30	16	12	39	16	9	11	43
2016	43	19	35	50	31	16	12	47	9	14	14	49
2017	48	24	59	41	34	17	6	21	17	4	3	15
2018	7	12	15	9	9	2	8	9	9	2	6	16

Source: Statistics Department, Nevis

Table 5.9: Visitors Length of Stay, 2010-2018 (Source: Statistic Department, Nevis)

<i>Year</i>	<i>Length of Stay (days)</i>				
	<i>1-3</i>	<i>4-7</i>	<i>8-14</i>	<i>15+</i>	<i>Not Stated</i>
2010	1,234	2,011	1,314	1,094	728
2011	1,322	2,962	1,438	943	171
2012	1,215	2,684	1,316	956	225
2013	1,186	2,784	1,166	688	164
2014	1,438	3,000	1,415	880	876
2015	1,108	2,537	1,227	957	706
2016	1,389	3,110	1,319	1,671	70
2017	1,340	2,892	1,338	1,399	17
2018	987	2,130	971	927	10

Table 5.10: Visitors Purpose of Visit, 2010-2018 (Source: Statistic Department, Nevis)

<i>Year</i>	<i>Purpose of Visit</i>				
	<i>Vacation</i>	<i>Business</i>	<i>V.F.R</i>	<i>Study</i>	<i>Other</i>
2010	3,985	759	452	488	681
2011	4,585	537	321	654	760
2012	3,898	722	323	646	806
2013	3,828	770	355	504	687
2014	4,650	924	414	666	953
2015	4,229	587	322	618	778
2016	4,823	634	365	618	965
2017	4,433	534	464	679	874
2018	3,193	303	250	665	627

Table 5.11: Number of Yacht and Cruise Ship Calls to Nevis, 2010 – 2018 (Source: Statistic Depart, Nevis)

<i>Year</i>	<i>Cruise Ship Calls</i>	<i>Yacht Calls</i>
2010	25	846
2011	34	965
2012	31	963
2013	28	844
2014	38	714
2015	64	743
2016	41	514
2017	48	533
2018	65	436

Table 5.12: Number of Yacht and Cruise Ship Passengers, 2010-2018 (Source: Statistic Depart, Nevis)

<i>Year</i>	<i>Yacht</i>	<i>Cruise</i>
2010	526	3,542
2011	496	5,277
2012	572	4,020
2013	1,813	4,064
2014	1,015	5,025
2015	3,288	6,696
2016	2,164	8,983
2017	3,027	9,706
2018	2,361	7,456

Table 5.13: Number of Cruise Calls during the Tourism Season, 2010-2018 (Source: Stats Dept., Nevis)

<i>Tourism Season - Cruise Calls</i>								
<i>Year 2010/11 to 2017/18</i>								
<i>Months</i>	<i>2010/2011</i>	<i>2011/2012</i>	<i>2012/2013</i>	<i>2013/2014</i>	<i>2014/2015</i>	<i>2015/2016</i>	<i>2016/2017</i>	<i>2017/2018</i>
<i>September</i>	0	1	0	0	0	0	0	0
<i>October</i>	0	0	0	0	0	0	0	0
<i>November</i>	2	2	5	1	6	5	6	7
<i>December</i>	5	7	5	4	15	12	9	20
<i>January</i>	5	2	12	6	12	6	5	16
<i>February</i>	8	7	2	6	15	10	7	17
<i>March</i>	9	8	4	4	15	10	9	13
<i>April</i>	2	4	4	1	3	0	0	7
<i>Total</i>	<i>31</i>	<i>31</i>	<i>32</i>	<i>22</i>	<i>66</i>	<i>43</i>	<i>36</i>	<i>80</i>

Table 5.14: Number of Cruise Passengers during the Tourism Season in Nevis, 2010-2018

Tourism Season - Cruise Passengers, 2010/11 to 2017/18								
Year								
Months	2010/2011	2011/2012	2012/2013	2013/2014	2014/2015	2015/2016	2016/2017	2017/2018
September	0	31	0	0	0	0	0	0
October	0	0	0	0	0	0	0	0
November	117	137	488	145	360	176	2,764	1,303
December	845	826	539	903	1999	1453	1,427	4,444
January	666	193	1,312	801	2255	1417	1,262	1,635
February	1,121	919	228	1,009	1228	2326	949	2,227
March	2,233	1,504	954	755	1230	1049	1,748	1,257
April	263	377	522	102	346	0	0	1,120
Total	5,245	3,987	4,043	3,715	7,418	6,421	8,150	11,986

Source: Statistics Department, Nevis

Table 5.15: Monthly totals divided in quarters for Yacht Passengers, 2010-2018 (Source: Stats Dept., Nevis)

Yacht Passengers, 2010 - 2018									
Year									
Months	2010	2011	2012	2013	2014	2015	2016	2017	2018
January	41	19	133	160	29	53	103	97	134
February	60	102	96	73	95	84	161	93	182
March	129	134	116	161	106	147	46	90	143
Total	230	255	345	394	230	284	310	280	459
April	55	28	65	46	116	52	13	60	63
May	54	21	3	45	90	4	0	9	2
June	14	17	11	48	103	10	0	0	3
Total	123	66	79	139	309	66	13	69	68
July	35	5	24	78	85	218	0	8	26
August	0	0	10	3	0	0	2	0	0
September	0	1	0	0	92	17	0	0	46
Total	35	6	34	81	177	235	2	8	72
October	0	0	15	65	118	0	8	0	0
November	0	8	0	167	29	15	18	90	0
December	138	161	99	967	152	67	21	191	47
Total	138	169	114	1,199	299	82	47	281	47

Table 5.16: Percentage change per ½ year for Yacht and Cruise passengers, 2010-2018

Year	Per ½ Year	Yacht Passengers	Cruise Passengers	Total Yacht and Cruise Passenger
2010	June	2,330	2,580	4,910
	December	1,091	962	2,053
	Total	3,421	3,542	6,963
Percentage change 2009/2010				15.4
2011	June	3,171	4,283	7,454
	December	1,293	994	2,287
	Total	4,464	5,277	9,741
Percentage change 2010/2011				(39.9)
2012	June	3,284	2,993	6,277
	December	1,076	1,027	2,103
	Total	4,360	4,020	8,380
Percentage change 2011/2012				(14.0)
2013	June	2,859	3,016	5,875
	December	2,890	1,048	3,938
	Total	5,749	4,064	9,813
Percentage change 2012/2013				17.1
2014	June	4,855	2,667	7,522
	December	752	360	1,112
	Total	5,607	3,027	8,634
Percentage change 2013/2014				(12.0)
2015	June	2,513	5,067	7,580
	December	775	1,629	2,404
	Total	3,288	6,696	9,984
Percentage change 2014/2015				16.0
2016	June	1,815	4,792	6,607
	December	349	4,191	4,540
	Total	2,164	8,983	11,147
Percentage change 2015/2016				11.6
2017	June	1,746	3,959	5,705
	December	1,281	5,747	7,028
	Total	3,027	9,706	12,733
Percentage change 2016/2017				14.2
2018	June	1,763	6,263	8,026
	December	598	1,193	1,791
	Total	2,361	7,456	9,817
Percentage change 2017/2018				23.0

Table 5.17: Tourist Arrivals by Age Group, 2010-2018, (Source: Statistics Department, Nevis)

<i>Year</i>	<i>0-14</i>	<i>15-24</i>	<i>25-34</i>	<i>35-44</i>	<i>45-55</i>	<i>56-64</i>	<i>65 & Over</i>	<i>Not Stated</i>	<i>Total</i>
2010	656	836	1,123	1,011	1,192	861	686	0	6,365
2011	601	588	1,000	1,155	1,455	1,074	982	2	6,857
2012	539	527	898	1,066	1,448	982	934	1	6,395
2013	466	459	826	969	1,352	1,020	892	1	5,985
2014	620	627	1,147	1,198	1,610	1,352	1,146	1	7,701
2015	491	531	926	949	1,390	1,128	1,119	0	6,534
2016	577	578	1,140	1,120	1,687	1,215	1,243	0	7,560
2017	572	598	966	936	1,504	1,173	1,237	0	6,986
2018	447	416	631	690	1,006	889	959	0	5,038

Table 5.18: Tourist Arrivals by Sex, 2010-2018(Source: Statistics Department, Nevis)

<i>Year</i>	<i>Female</i>	<i>Male</i>
2010	3,026	3,202
2011	3,449	3,325
2012	3,043	3,244
2013	3,011	2,923
2014	3,816	3,854
2015	3,260	3,251
2016	3,819	3,719
2017	3,552	3,418
2018	2,565	2,459

Table 5.19: Passengers movements via Vance W Amory International Airport per half year, 2010-2018

Year	Months per half year	Arrival	Departure	Total
2010	January-June	6,030	5,693	11,723
	July-December	6,745	6,039	12,784
	Total	12,775	11,732	24,507
2011	January-June	1,212	6,114	7,326
	July-December	5,170	4,772	9,942
	Total	6,382	10,886	17,268
2012	January-June	5,217	5,522	10,739
	July-December	4,648	4,525	9,173
	Total	9,865	10,047	19,912
2013	January-June	5,296	5,517	10,813
	July-December	4,559	4,536	9,095
	Total	9,855	10,053	19,908
2014	January-June	5,323	5,786	11,109
	July-December	5,165	5,016	10,181
	Total	10,488	10,802	21,290
2015	January-June	5,211	5,648	10,859
	July-December	4,825	4,588	9,413
	Total	10,036	10,236	20,272
2016	January-June	5,498	5,935	11,433
	July-December	5,434	5,466	10,900
	Total	10,932	11,401	22,333
2017	January-June	5,186	5,607	10,793
	July-December	4,374	3,990	8,364
	Total	9,560	9,597	19,157
2018	January-June	3,301	3,867	7,168
	July-December	3,916	3,755	7,671
	Total	7,217	7,622	14,839

Source: Nevis Air & Sea Ports Authority

Table 5.20: Inter-Island Ferry Passengers movements via Charlestown port per quarter, 2010-2018

Year	Monthly Quarters	Arrivals	Departures	Total
2010	March	31,514	30,084	61,598
	June	23,543	23,206	46,749
	September	25,304	26,081	51,385
	December	26,576	25,383	51,959
	Total	106,937	104,754	211,691
2011	March	29,661	27,863	57,524
	June	26,928	26,245	53,173
	September	31,731	31,057	62,788
	December	29,943	29,346	59,289
	Total	118,263	114,511	232,774
2012	March	29,684	26,416	56,100
	June	28,452	27,039	55,491
	September	32,332	30,565	62,897
	December	27,604	26,121	53,725
	Total	118,072	110,141	228,213
2013	March	31,989	30,025	62,014
	June	30,052	29,077	59,129
	September	29,850	29,003	58,853
	December	33,112	30,912	64,024
	Total	125,003	119,017	244,020
2014	March	27,579	26,499	54,078
	June	29,378	29,907	59,285
	September	33,176	33,491	66,667
	December	30,187	30,151	60,338
	Total	120,320	120,048	240,368
2015	March	36,607	35,145	71,752
	June	30,606	29,951	60,557
	September	34,837	34,579	69,416
	December	33,441	32,206	65,647
	Total	135,491	131,881	267,372
2016	March	34,942	34,207	69,149
	June	31,876	31,309	63,185

	<i>September</i>	38,100	36,530	74,630
	<i>December</i>	40,136	39,186	79,322
	Total	145,054	141,232	286,286
2017	<i>March</i>	43,462	40,594	84,056
	<i>June</i>	35,393	34,051	69,444
	<i>September</i>	36,790	35,478	72,268
	<i>December</i>	47,030	44,348	91,378
	Total	162,675	154,471	317,146
2018	<i>March</i>	46,163	43,084	89,247
	<i>June</i>	39,526	39,211	78,737
	<i>September</i>	43,835	42,817	86,652
	<i>December</i>	42,820	40,113	82,933
	Total	172,344	165,225	337,569

Source: Nevis Air and Sea Ports Authority

5.21: Arrivals in St. Kitts bound for Nevis, 2018

Months	January	February	March	April	May	June	July	August	September	October	November	December
Arrivals	2,404	2,179	2,787	1,608	2,082	3,158	2,883	2,135	1,411	1,156	2,162	4,376
Total	28,341											

Source: Department of Statistics (St. Kitts)

5.22: Purpose of Visit for Arrivals in St. Kitts bound for Nevis 2018

Purpose of Visit	Number of Arrivals
<i>Business</i>	1,669
<i>Education</i>	1,153
<i>Health</i>	30
<i>Holiday</i>	17,279
<i>Honeymoon</i>	486
<i>Sports</i>	361
<i>Visiting friends & family</i>	5,556
<i>Meeting</i>	206
<i>Other</i>	1,601
Total	28,341

Source: Department of Statistics (St. Kitts)

Section 6 – Health

Table 6.1: Selected Health Indicators, 2012- 2018 (Source: Nevis Health Promotion Unit)

Health Indicators	2012	2013	2014	2015	2016	2017	2018
Dispensaries	1	1	1	1	2	2	2
Health Centers	6	6	6	6	6	6	2
Hospitals	1	1	1	1	1	1	1
Hospital Beds	52	52	52	52	52	52	52
Hospital Beds in Use	52	52	52	52	52	52	52
Infirmary Beds	38	38	38	38	38	38	38
Infirmary Beds in Use	38	38	38	38	38	38	38
Major Operations	140	149	155	103	150	148	146
Hospital Admissions	932	863	882	921	1,004	937	1,114
Hospital Discharges	953	885	858	920	1,019	954	1,119

Table 6.2: Intentional and Unintentional Injuries, 2012- 2018 (Source: Nevis Health Promotion Unit)

Injuries	2012	2013	2014	2015	2016	2017	2018
Sexual Assault	10	9	5	8	12	9	5
Physical Assault	89	83	125	105	133	120	130
Domestic Violence	23	22	7	2	8	6	4
Motor Vehicle Accidents	61	59	99	120	186	176	187
Stabbing/Slashing	6	6	5	12	11	13	5

Table 6.3: Infant Visit at Health Centres, 2012- 2018 (Source: Nevis Health Promotion Unit)

Health Centre	2012	2013		2014	2015	2016	2017	2018
Charlestown	1,888	1,816		1,496	743	765	2,269	1,959
Gingerland	1,166	1,206		1,185	297	296	889	978
Brown Hill	813	1,037		1,124	497	509	1,194	1,212
Butlers	105	134		195	97	140	314	316
Combermere	484	499		372	234	201	153	332
Cotton Ground	450	453		432	259	289	558	514

Table 6.4: Toddlers Visit at Health Centres, 2012- 2018 (Source: Nevis Health Promotion Unit)

Health Centre	2012	2013	2014	2015	2016	2017	2018
Charlestown	748	333	402	201	218	519	544
Gingerland	388	414	416	188	138	320	239
Brown Hill	372	371	394	144	152	414	358
Butlers	45	40	57	55	52	80	77
Combermere	233	195	204	147	177	127	236
Cotton Ground	225	187	264	117	120	194	226

Table 6.5: Infants New Visit at Health Centres, 2012- 2018 (Source: Nevis Health Promotion Unit)

Health Centre	2012	2013	2014	2015	2016	2017	2018
Charlestown	57	57	57	62	80	59	58
Gingerland	34	33	28	26	26	24	31
Brown Hill	42	117	34	41	49	51	46
Butlers	6	10	16	5	15	11	12
Combermere	18	13	19	18	19	11	16
Cotton Ground	21	17	16	19	25	21	83

Table 6.6: Registered Psychiatric Patients by age range, 2013-2018 (Source: Nevis Health Promotion Unit)

Age Range	2013	2014	2015	2016	2017	2018
0 - 9	--	--	--	--	2	2
10 - 19	32	32	32	28	28	38
20 - 29	82	82	82	80	91	101
30 - 39	85	85	85	94	98	97
40 - 49	63	63	63	69	73	77
50 - 59	78	78	78	78	79	81
60 - 69	44	44	44	43	44	45
70+	56	56	56	68	65	64
Not Stated	31	31	31	73	73	79
Total	471	471	471	533	553	584

Table 6.7: HIV/AIDS Laboratory Cases at the Alexandra Hospital, 2010-2018

Alexandra Hospital Laboratory						
Year	No. of Tests Done	Male	Female	Unknown Gender	No. of Positives	No. of Negatives
2010	571	170	369	32	1	570
2011	657	210	420	27	3	654
2012	550	187	333	30	0	550
2013	547	173	342	32	0	547
2014	547	196	335	16	2	547
2015	476	196	269	17	0	476
2016	384	83	291	10	1	383
2017	455	68	377	10	1	454
2018	429	75	346	8	1	428

Table 6.8: HIV/AIDS Laboratory Cases at the Avalon Medical Centre, 2010-2018

Avalon Medical Laboratory (Pte)						
Year	No. of Tests Done	Male	Female	Unknown Gender	No. of Positives	No. of Negatives
2010	319	158	161	0	0	319
2011	234	94	140	0	0	234
2012	188	66	122	0	0	188
2013	147	46	101	0	0	147
2014	173	66	101	6	0	173
2015	136	44	92	0	0	136
2016	125	49	76	0	0	125
2017	132	45	87	0	0	132
2018	99	40	59	0	0	99

Table 6.9: Registered Diabetic Patients at Health Centres in Nevis, 2010-2018 (Source: Health Promotion Unit)

Health Centre	2010		2011		2012		2013		2014		2015		2016		2017		2018	
	M	F	M	F	M	F	M	F	M	F	M	F	M	F	M	F	M	F
Charlestown	46	113	51	105	48	104	47	108	47	88	50	106	41	108	N/A	N/A	37	91
Brown Hill	23	33	22	38	23	34	19	36	21	34	18	36	20	34			21	37
Gingerland	54	113	57	107	51	100	53	94	57	97	49	86	49	92			57	102
Butlers	9	32	10	33	9	31	6	36	12	36	15	32	12	30			9	29
Combermere	13	36	12	35	14	38	12	39	13	37	13	32	14	31			12	19
Cotton Ground	16	26	17	24	15	28	19	28	20	25	18	27	17	31			19	22
Yearly Total	161	353	169	342	160	335	156	341	170	317	163	319	153	326			155	300
Combined Yearly Total	514		511		495		497		487		482		479		N/A		455	

Table 6.10: Registered Hypertensive Patients at different Health Centre in Nevis, 2010-2018 (Source: Health Promotion Unit, Nevis)

Health Centre	2010		2011		2012		2013		2014		2015		2016		2017		2018	
	M	F	M	F	M	F	M	F	M	F	M	F	M	F	M	F	M	F
Charlestown	39	78	40	89	42	85	48	76	80	40	39	81	33	81	N/A	N/A	30	69
Brown Hill	23	42	22	41	22	40	20	38	20	36	18	38	18	43			22	41
Gingerland	45	108	46	103	42	101	61	114	107	54	51	108	53	108			32	98
Butlers	7	18	9	17	7	16	17	26	27	46	31	44	29	44			22	33
Combermere	18	51	18	48	21	47	16	46	17	42	19	34	15	35			18	32
Cotton Ground	15	41	16	41	19	39	19	41	21	47	21	42	21	46			21	48
Yearly Total	147	338	151	339	153	328	181	341	272	265	179	347	169	357			145	321
Combined Yearly Total	485		490		481		522		537		526		526				466	

Table: 6.11: Dental Unit trend by Services Rendered and by Patients 2010-2016 (Source: Health Promotion Unit, Nevis)

Year	Services Rendered									Patients		
	Extraction	Fillings	Prophylaxis/Cleaning	Sealants	Root Canal	Examinations	Prescription	Other	Totals	Adults	Children	Total
2010	634	1,212	949	62	112	2,137	--	186	5,293	2,013	1,695	3,708
2011	426	1,023	539	78	40	977	--	33	3,116	1,296	1,543	2,839
2012	356	1,098	977	40	42	1,096	--	70	3,679	1,402	1,556	2,958
2013	423	778	1,523	7	17	1,154	--	94	3,996	1,265	1,759	3,024
2014	541	1,241	1,054	27	24	705	126	81	3,799	2,075	1,164	3,239
2015	625	1,346	1,414	125	13	923	164	41	4,651	2,009	1,992	4,001
2016	572	1,275	1,445	49	8	995	137	25	4,506	1,941	1,940	3,881
2017	n/a											
2018	n/a											

Section 7 - Social Services

Table: 7.1: Reported cases from Family Service Division, Nevis 2010-2018

Year	Child Abuse	Maintenance	Domestic Issues	Mediation Counselling	Attempted Suicide	Juvenile Matters
2010	66	12	12	3	2	32
2011	61	18	6	6	2	27
2013	43	14	4	6	0	8
2014	16	12	6	31	0	20
2015	23	6	7	37	0	27
2016	25	7	2	20	0	33
2017	30	8	0	31	1	16
2018	13	11	2	50	8	15

Source: Health Promotion Unit, Nevis

Table: 7.2: Hot Meals program by Parish and Gender, Nevis 2010 - 2018

Year	Parishes										Total		
	St. Pauls		St. Thomas		St. James		St. George		St. Johns				
	Male	Female	Male	Female	Male	Female	Male	Female	Male	Female	Male	Female	Both
2010	0	0	6	0	4	5	6	7	3	10	19	22	41
2011	3	2	6	12	4	6	7	7	3	9	23	36	59
2012	5	8	3	4	8	12	6	8	3	11	25	43	68
2013	9	11	5	3	6	9	6	10	2	11	28	44	72
2014	9	9	6	3	6	9	7	13	2	8	30	42	72
2015	8	9	7	3	7	9	8	13	2	8	32	42	74
2016	9	8	8	4	4	4	7	11	7	9	35	36	71
2017	6	5	7	3	8	8	8	11	6	7	35	34	69
2018	7	5	7	3	8	9	7	7	9	9	38	33	71

Source: Social Services Department, Nevis

Section 8 – Finance

Table 8.1: Estimates of the Nevis Island Administration, 2010-2018

Year	RECURRENT			CAPITAL		
	Revenue	Expenditure	Surplus/ (Deficit)	Revenue	Expenditure	Capital Account Balance
2010	93,988,428	143,847,104	(49,858,676)	74,475,547	23,576,225	(50,899,322)
2011	119,585,846	136,052,429	(16,466,583)	34,719,183	38,296,272	(3,577,089)
2012	116,514,870	126,131,653	(9,616,783)	19,141,026	17,681,686	1459340
2013	121,055,560	125,250,230	(4,194,670)	8,272,370	9,634,700	(1,362,330)
2014	128,468,450	133,995,785	(5,527,335)	13,163,251	23,548,636	(10,385,385)
2015	133,857,250	130,488,336	3,368,914	26,640,030	25,927,065	712,965
2016	139,903,778	143,669,182	(3,313,126)	12,548,332	36,300,626	(23,752,294)
2017	129,064,593	149,216,904	(20,152,311)	66,487,131	63,522,784	2,964,347
2018	138,440,813	160,108,540	(21,667,727)	54,262,582	50,812,322	3,450,260

Source: Ministry of Finance, Nevis

Table 8.2 Revenue collected by the Customs & Excise Department, Nevis 2013-2018

Revenue Collected	2013	2014	2015	2016	2017	2018
Customs Duty	10,024,739	10,585,564	11,275,035	11,352,726	11,717,460.19	11,916,342.48
Excise Tax & Duty	5,128,931	3,772,908	4,323,952	5,168,343	5,370,519.19	6,829,046.01
Value Added Tax	17,444,757	19,168,921	15,515,058	14,812,924	15,563,152.49	16,178,808.75
Consumption Tax	66,919	35,496	24,954	41,786	46,883.17	26,677.48
Alcohol Duty	106,720	34,134	167,589	100,500	78,750.99	90,519.30
Environmental Levy	711,564	749,128	1,858,935	2,531,385	2,329,710.36	1,838,247.80
Custom Service Charge	6,391,417	6,235,142	7,361,604	7,951,169	8,130,317.00	9,205,297.30
Unclassified	8,252	140,865	86,234	62,591	43,639.76	78,185.77
Custom Fees	62,925	64,320	64,550	68,450	80,245	77,295.00
Yacht Fees	11,680	12,900	13,520	14,000	12,980	9,600.00
Fees & Fines	7,500	4,000	26,870	6,000	35,000	9,750.00
Bottle Levy	169,354	0	0	0	58,179.12	66,418.45
Gains on exchange	0	37	60	62	177.15	149.16
Total	40,134,758.00	40,803,415.00	40,718,361.00	42,109,936.00	43,467,014.42	46,326,337.50

Table 8.3: Inland Revenue - Taxes collected by tax type in Nevis, 2013-2018

<i>Type of Taxes</i>	<i>2013</i>	<i>2014</i>	<i>2015</i>	<i>2016</i>	<i>2017</i>	<i>2018</i>
Bank License	110,000	120,000	108,000	104,000	0	0
Bus. & Occup License	484,928	486,747	570,839	692,331	683,820.06	739,030.17
Coastal Levy	296,827	499,650	298,185	154,392	199,068.77	184,090.12
Consumption Tax	8,704	7,131	7,821	5,500	6,779.14	0
Corporate Income Tax	3,124,831	4,203,147	4,100,087	6,703,808	7,634,426.55	6,199,265.96
Driver License	370,375	354,360	379,069	429,203	457,087.55	719,508.74
Driver Test	0	0	16,250	22,394	45,375	0
Electricians License	3,088	0	0	0	0	0
Excess Cash	0	0	0	0	0	146.45
Gain on Exchange	0	0	0	0	0	53.22
Gaming Levy	0	0	0	0	0	752,199.28
Insurance Prem. Tax	636,419	392,633	463,260	457,346	485,490.51	484,789.18
IRD fines	125	0	0	0	0	0
Learner Permit	0	0	0	7,400	45,018.75	0
License - Unclassified	610,736	645,480	544,473	307,504	7,221.80	65,461.80
Liquor License	53,614	57,341	64,094	72,682	81,239.05	89,937
Loss of Exchange	0	0	0	0	0	-69.42
Property Tax	2,426,297	2,561,143	2,720,935	2,770,362	3,219,058.70	3,852,771.89
Social Serv. Levy- No	8,324,117	8,475,642	9,130,008	9,894,682	8,793,452.44	10,489,135.30
Stamp Duty (Bank Cheq)	15,179	12,964	2,893	6,611	8,190.09	8,521.58
Stamp Duty Probate	0	0	0	0	0	0
Stamp Duty Unclassified	1,756,907	3,552,936	3,009,556	2,154,952	2,018,677.19	2,281,970.41
Stamp Duty (Transfer)	10,525,650	12,225,608	13,216,773	9,171,392	6,125,354.30	8,273,225.26
Temp Driver License	114,188	101,349	88,977	107,147	126,187.50	0
Temp Liquor License	8,440	4,160	8,620	7,795	820	0
Tourism Dev. Levy	2,195,351	2,425,729	2,367,022	2,580,226	2,293,474.61	2,528,367.06
Trader Tax	12,458	4,756	3,261	2,560	0	0
Travel Tax	285,650	269,441	261,578	241,403	215,833.16	123,763.03
Travel Tax (Unclassified)	968	2,828	2,500	7,250	3,343.75	0
Unclassified Fees	0	0	129,392	557,317	802,099.75	143,095.91
Unincorp. Business	991,731	1,129,612	1,326,819	1,386,548	1,996,414.62	2,097,579.46
Value Added Tax	18,375,837	20,221,378	17,718,414	16,528,333	17,118,555.04	17,312,265.55
Vehicle Rental Levy	0	0	1,600	12,500	0	0
Wheel Tax	2,008,367	1,960,816	2,191,895	2,454,212	2,652,125.70	2,736,536.31
Withholding Tax	112,598	327,487	93,832	394,384	329,993.77	920,520.84
Total	52,853,385	60,042,338	58,826,153	57,234,234	55,349,107.80	60,002,165.10

Source: Nevis Inland Revenue Department

Table 8.4: Revenue and Expenditure Analysis, 2012-2018

<i>Items</i>	<i>2012 R Actual</i>	<i>2013 R Actual</i>	<i>2014 R Actual</i>	<i>2015 R Actual</i>	<i>2016 Actual</i>	<i>2017 R Actual</i>	<i>2018 Actual</i>
<i>Sources of Revenue</i>							
Reg. of Offshore Cos.& Trust	11,657	12,518	12,764	13,843	14,120	13,264	13,874
Annual Fees	7,773	8,324	8,476	12,699	11,468	9,634	10,489
Consumption Tax	217	297	39,614	207	105	56	326
Import Duties	8,716	9,625	10,620	11,580	11,424	11,744	11,756
Hotel Room & Restaurant Tax	13	0	0	0	0	0	0
Other	88,139	90,292	56,994	95,528	95,787	94,367	101,996
Total Recurrent Revenue	116,515	121,056	128,468	133,857	132,904	129,065	138,441
Personal Emoluments	37,412	40,362	43,662	43,094	49,217	52,896	53,403
Wages	18,702	20,082	21,231	22,191	26,330	25,651	25,098
Retiring Benefits	7,631	7,943	7,934	7,944	9,667	9,782	11,094
Loan Repayment	9,349	10,685	9,204	6,982	8,413	7,748	12,574
Interest Payment	21,803	18,058	16,689	15,463	15,271	16,683	17,180
Total non-discretionary Expenses	94,897	97,130	98,720	95,674	108,898	112,760	119,349
Other	21,886	17,435	26,072	27,832	26,358	28,709	28,185
Total Recurrent Expenditure	116,783	114,565	124,792	123,506	135,256	141,469	147,534
Recurrent Surplus/(deficit)	-268	6,491	3,676	10,350	-2,352	-12,404	-9,093
Total Capital Expenditure	51,801	9,635	23,549	25,927	36,301	63,523	50,812
Total Expenditure	168,584	124,200	148,341	149,433	171,557	204,086	198,346
Capital Revenue	34,566	8,272	13,163	26,640	12,548	66,487	54,262
Total Revenue	151,081	129,328	141,631	160,496	145,452	195,552	192,703
Total Surplus/(Deficit)	-17,503	5,128	-6,710	11,063	-26,105	-9,440	-5,643
Debt Service/Recurrent Revenue (%)	26.7	23.7	20.2	16.8	17.8	18.9	21.5
Debt Service/Recurrent Expenditure (%)	26.7	25.1	20.7	18.2	17.5	17.3	20.2
Recurrent Revenue Growth (%)	2.6	-3.9	-6.1	-2.9	0.7	2.9	-7.3
Recurrent Expenditure Growth (%)	-5.8	1.9	-8.9	1.0	-9.5	-4.6	-4.3
Capital Expenditure Growth (%)	-35.3	81.4	-144.4	-10.1	-40.0	-75.0	20.0
Increment in Personal Emoluments (%)	-1.6	-7.9	-8.2	1.3	-14.2	-7.5	-1.0
Increment In Wages (%)	-1.37	-7.4	-5.72	-4.52	-18.65	2.58	2.16
Increment Retiring Benefits (%)	-24.5	-4.1	0.1	-0.1	-21.7	-1.2	-13.4
Non-Discretionary/Recurrent Exp. (%)	81.3	84.8	79.1	77.5	80.5	79.7	80.9
Non-Discretionary/Total Exp. (%)	56.3	78.2	66.5	64.0	63.5	55.0	60.2
Non-Discretionary/ Recurrent Rev (%)	81.4	80.2	76.8	71.5	81.9	87.4	86.2
PE & Wages/Recurrent Expenditure	48.0	52.8	52.0	52.9	55.9	55.5	53.2
PE & Wages/Recurrent Revenue	48	50	51	49	57	61	57

Source: The Ministry of Finance, Nevis (Revised figures)

Table 8.5: Revenue collected quarterly - Nevis Financial Services Sector, 2013 - 2018

<i>Month per 1/4</i>	<i>2013</i>	<i>2014</i>	<i>2015</i>	<i>2016</i>	<i>2017</i>	<i>2018</i>
<i>March</i>	3,170,458	3,860,479	3,976,162	4,191,375	4,217,139	3,941,551
<i>June</i>	3,477,351	2,806,234	3,252,282	3,384,745	3,031,965	3,104,727
<i>September</i>	2,637,870	2,834,382	3,139,539	2,922,314	2,746,957	3,476,311
<i>December</i>	3,392,872	3,351,319	3,558,060	3,896,556	3,326,196	3,712,685
<i>Total</i>	<i>12,678,551</i>	<i>12,852,414</i>	<i>13,926,043</i>	<i>14,394,990</i>	<i>13,322,257</i>	<i>14,235,274</i>

Source: Nevis Financial Services

Table 8.6: Number of New Companies (NBCOs, LLCs, Trusts, Foundations) Registered in Nevis, 2012-2018

<i>Years</i>	<i>No. of NBCO's</i>	<i>No. of LLC'S</i>	<i>No. of Trusts</i>	<i>No. of Foundations</i>	<i>Total</i>
2012	1,573	1,110	113	23	2,819
2013	5,181	1,930	474	34	7,619
2014	1,669	868	131	25	2,693
2015	1,365	661	90	27	2,143
2016	1,577	764	117	12	2,470
2017	1,629	650	69	20	2,368
2018	1,265	575	76	45	1,961

Source: Nevis Financial Services

Table: 8.7 Number of Active Entities in Nevis between 2012 and 2018

<i>Years</i>	<i>No. of NBCO's</i>	<i>No. of LLC'S</i>	<i>No. of Trusts</i>	<i>No. of Foundations</i>	<i>Offshore Bank</i>	<i>Total</i>
2012	11,590	4,938	1,022	92	1	17,643
2013	11,628	5,086	877	97	1	17,689
2014	11,928	5,159	1,093	103	1	18,284
2015	11,843	4,970	780	114	1	17,708
2016	11,142	4,420	1,031	97	1	16,691
2017	11,305	4,386	691	93	1	16,476
2018	10,534	4,006	602	109	1	15,252

Source: Nevis Financial Services

St. Kitts and Nevis Gross Domestic Product (Basic Current/Constant)

Table.8.8: St. Kitts/Nevis Gross Domestic Product by Economic Activity at Basic Current Prices 2013-2018 (EC000)

INDUSTRIES	2013	2014	2015	2016	2017	2018Est
<i>Agriculture</i>	20.12	18.33	16.43	15.36	17.42	20.31
<i>Crops</i>	13.61	11.44	9.31	8.08	10.11	13.27
<i>Sugar</i>	0.00	0.00	0.00	0.00	0.00	0.00
<i>Other crops</i>	13.61	11.44	9.31	8.08	10.11	13.27
<i>Livestock</i>	5.93	6.34	6.59	6.78	6.82	6.55
<i>Forestry</i>	0.58	0.55	0.53	0.50	0.49	0.50
<i>Fishing</i>	7.66	9.26	10.24	8.05	10.88	14.22
<i>Mining & Quarrying</i>	3.44	3.61	3.50	3.88	3.08	3.32
<i>Manufacturing</i>	168.66	159.94	159.35	147.17	137.09	142.62
<i>Sugar</i>	0.00	0.00	0.00	0.00	0.00	0.00
<i>Other</i>	168.66	159.94	159.35	147.17	137.09	142.62
<i>Electricity & Water</i>	25.38	27.69	29.15	28.36	29.78	31.98
<i>Electricity</i>	12.75	16.00	17.12	17.85	18.72	19.93
<i>Water</i>	12.63	11.70	12.03	10.52	11.06	12.06
<i>Construction</i>	268.53	342.31	386.21	427.79	479.33	492.98
<i>Wholesale & Retail Trade</i>	144.39	145.67	147.49	161.06	153.46	173.82
<i>Hotels & restaurants</i>	217.72	225.22	208.51	205.55	212.41	239.16
<i>Hotels</i>	212.58	220.04	203.54	200.53	207.20	233.32
<i>Restaurants</i>	5.14	5.18	4.97	5.02	5.21	5.83
<i>Transport, Storage and Communications</i>	230.75	253.53	264.21	267.98	296.09	313.84
<i>Transport and Storage</i>	142.44	160.23	155.06	151.34	177.81	192.58
<i>Road</i>	90.86	95.17	81.90	80.08	97.12	104.94
<i>Sea</i>	0.74	0.78	0.83	0.87	0.97	1.06
<i>Air</i>	1.05	0.99	0.98	1.02	1.28	1.30
<i>Supporting and auxiliary transportation activities</i>	49.79	63.29	71.36	69.37	78.45	85.29
<i>Communications</i>	88.31	93.30	109.15	116.64	118.28	121.25
<i>Financial Intermediation</i>	165.65	159.96	173.03	174.65	176.19	181.34
<i>Banks & Other Financial Institutions</i>	121.08	113.65	126.39	125.48	128.06	132.24
<i>Insurance and pension funding</i>	27.14	27.93	28.16	29.87	28.72	29.30
<i>Activities Auxiliary to Financial Intermediation</i>	17.43	18.39	18.49	19.30	19.41	19.80
<i>Real Estate, Renting and Business Activities</i>	259.53	268.13	275.34	264.42	263.01	273.65
<i>Owner Occupied Dwellings</i>	127.42	129.54	131.47	136.78	139.53	142.62
<i>Real estate activities</i>	92.54	97.86	98.83	78.75	72.70	76.38
<i>Renting of machinery and equipment</i>	2.64	2.81	3.14	3.44	3.57	3.84
<i>Computer and related activities</i>	5.58	4.66	4.71	5.12	5.32	5.73
<i>Business Services</i>	31.35	33.28	37.20	40.33	41.88	45.08

<i>Public Administration, Defense & Compulsory Social Security</i>	180.65	200.03	217.74	231.04	240.34	245.27
<i>Education</i>	216.03	230.46	201.90	212.19	220.44	229.95
<i>Public</i>	60.49	63.87	60.53	69.36	73.86	76.13
<i>Private</i>	155.53	166.59	141.37	142.83	146.58	153.82
<i>Health and Social Work</i>	49.88	53.14	53.69	63.76	67.43	72.81
<i>Public</i>	36.92	40.29	39.60	45.37	48.23	52.92
<i>Private</i>	12.96	12.85	14.09	18.39	19.20	19.89
<i>Other community, social & personal services</i>	43.43	47.00	51.62	53.71	55.47	57.43
<i>Activities of Private Households as Employers</i>	6.12	5.53	5.52	5.96	5.70	6.03
Less FISIM	29.57	29.01	25.84	28.01	27.21	28.31
<i>Gross Value Added at Basic Prices</i>	<i>1,978.35</i>	<i>2,120.80</i>	<i>2,178.08</i>	<i>2,242.91</i>	<i>2,340.92</i>	<i>2,470.39</i>
<i>GROWTH RATE</i>	<i>6.25</i>	<i>7.20</i>	<i>2.70</i>	<i>2.98</i>	<i>4.37</i>	<i>5.53</i>
<i>Taxes on products</i>	315.29	354.72	349.97	346.32	337.50	337.27
Less Subsidies	-	-	-	-	-	-
GDP at Market Prices	2,293.64	2,475.51	2,528.05	2,589.23	2,678.42	2,807.66
<i>GROWTH RATE</i>	<i>6.13</i>	<i>7.93</i>	<i>2.12</i>	<i>2.42</i>	<i>3.44</i>	<i>4.83</i>

Table.8.9: St. Kitts and Nevis Gross Domestic Product by Economic Activity at Basic Constant Prices 2013-2018 (EC000)

INDUSTRIES	2013	2014	2015	2016	2017	2018 Est
<i>Agriculture, Livestock and Forestry</i>	14.67	13.39	12.21	12.06	13.43	13.45
<i>Crops</i>	9.75	8.17	6.84	6.58	8.23	8.54
<i>Sugar</i>	0.00	0.00	0.00	0.00	0.00	0.00
<i>Other Crops</i>	9.75	8.17	6.84	6.58	8.23	8.54
<i>Livestock</i>	4.58	4.92	5.11	5.26	4.98	4.69
<i>Forestry</i>	0.35	0.31	0.26	0.22	0.22	0.22
<i>Fishing</i>	6.29	7.70	8.47	6.49	8.51	10.90
<i>Mining & Quarrying</i>	3.42	3.61	3.41	3.74	3.70	3.88
<i>Manufacturing</i>	91.03	84.10	86.65	78.36	73.25	75.45
<i>Sugar</i>	0.00	0.00	0.00	0.00	0.00	0.00
<i>Other</i>	91.03	84.10	86.65	78.36	73.25	75.45
<i>Electricity & Water</i>	23.73	24.10	24.80	24.55	24.66	26.07
<i>Electricity</i>	15.12	15.20	15.83	16.70	16.42	17.22
<i>Water</i>	8.61	8.90	8.97	7.84	8.24	8.85
<i>Construction</i>	248.44	285.27	307.09	332.73	348.36	351.26
<i>Wholesale & Retail Trade</i>	108.06	108.30	112.82	124.12	116.57	129.44
<i>Hotels & Restaurants</i>	158.69	166.63	171.44	168.94	170.03	186.80
<i>Hotels</i>	155.39	163.21	168.14	165.71	166.77	183.21
<i>Restaurants</i>	3.30	3.42	3.30	3.23	3.26	3.58
<i>Transport, Storage and Communications</i>	203.07	221.24	240.25	254.65	269.97	281.34
<i>Transport and Storage</i>	103.31	113.00	126.88	130.88	151.23	161.42
<i>Road</i>	63.44	65.78	68.95	74.35	85.81	91.35
<i>Sea</i>	1.29	1.35	1.44	1.51	1.67	1.81
<i>Air</i>	0.55	0.49	0.42	0.42	0.42	0.42
<i>Supporting and auxiliary transport activities</i>	38.03	45.39	56.07	54.60	63.33	67.83
<i>Communications</i>	99.76	108.24	113.37	123.77	118.74	119.92
<i>Financial Intermediation</i>	182.01	195.74	193.61	197.61	198.74	202.66
<i>Banks & Other Financial Institutions</i>	136.32	149.17	145.89	148.13	155.15	158.63

<i>Insurance and pension funding</i>	23.58	23.40	23.75	24.82	24.20	24.44
<i>Activities Auxiliary to Financial Intermediation</i>	22.11	23.18	23.97	24.66	19.39	19.59
<i>Real Estates, Renting and Business Activities</i>	242.52	246.47	251.24	240.34	239.10	244.37
<i>Owner Occupied Dwellings</i>	120.52	122.37	124.11	127.22	128.49	130.03
<i>Real estate activities</i>	87.51	92.42	93.27	76.14	72.22	74.02
<i>Renting of machinery and equipment</i>	1.79	1.93	2.80	3.07	3.11	3.27
<i>Computer and related activities</i>	6.28	4.66	4.73	5.09	5.27	5.53
<i>Business Services</i>	26.42	25.10	26.33	28.82	30.01	31.51
<i>Public Administration, Defence and Compulsory Social Security</i>	160.79	171.20	180.92	186.38	193.39	197.35
<i>Education</i>	159.72	161.27	140.54	146.29	148.09	152.76
<i>Public</i>	53.84	54.66	50.30	55.95	59.36	60.58
<i>Private</i>	105.87	106.62	90.24	90.34	88.72	92.18
<i>Health and Social Work</i>	43.45	44.89	44.35	51.29	53.99	55.10
<i>Public</i>	32.86	34.48	32.90	36.60	38.77	39.57
<i>Private</i>	10.59	10.41	11.45	14.69	15.22	15.53
<i>Other community, social and personal services</i>	36.34	38.92	44.40	45.94	47.21	48.16
<i>Private Households with Employed Persons</i>	5.61	4.71	4.58	4.74	4.51	4.65
<i>Less FISIM</i>	33.70	35.07	36.81	36.84	33.91	34.59
<i>GDP at Basic Prices, Constant</i>	1,654.15	1,742.46	1,789.95	1,841.39	1,879.60	1,949.05
<i>GROWTH RATE</i>	5.59	5.34	2.73	2.87	2.08	3.69
<i>Plus: Product Taxes less Subsidies</i>	263.62	291.44	287.61	284.32	270.99	266.09
<i>GDP in Market Prices</i>	1,917.77	2,033.90	2,077.56	2,125.71	2,150.59	2,215.14
<i>Growth Rate</i>	5.47	6.06	2.15	2.32	1.17	3.00

Source: St. Kitts Nevis Statistics Department/ECCB

Consumer Price Index – (Inflation Rate, Nevis)

Table 8.10: January to December 2014 Quarterly Section Indices (Source: Statistics Department)

(January 2010 = 100)		Food and Non-Alcoholic Beverages	Alcoholic, Beverages Tobacco and Narcotics	Clothing and Footwear	Housing, Water, Electricity, Gas and Other Fuels	Furnishings, Household Equipment Maintenance	Health
Period	All Items						
2014							
First Quarter	106.59	112.02	112.94	125.79	101.03	112.38	105.47
Second Quarter	105.86	111.08	109.63	126.50	101.34	111.60	109.66
Third Quarter	106.55	110.37	109.58	126.19	101.10	109.61	109.77
Fourth Quarter	106.01	110.01	109.13	125.83	99.32	112.05	111.93
* Jan-Dec 2014	106.25	110.87	110.32	126.08	100.70	111.41	109.21
* Jan-Dec 2013	106.83	112.41	113.71	125.63	101.06	108.72	103.75
% Chg 14/13	-0.55	-1.37	-2.99	0.35	-0.36	2.47	5.26

Table 8.10(a): January to December 2014 Quarterly Section Indices continued (Source: Statistics Department)

(January 2010 = 100)		Transportation	Communication	Recreation and Culture	Education	Restaurants and Hotels	Miscellaneous Goods and Service
Period	All Items						
2014							
First Quarter	106.59	101.32	122.79	102.59	97.56	106.12	111.23
Second Quarter	105.86	98.06	121.76	103.93	97.56	104.97	113.75
Third Quarter	106.55	101.48	119.69	107.17	102.14	104.39	114.26
Fourth Quarter	106.01	99.37	119.69	108.12	111.52	104.39	113.95
* Jan-Dec 2014	106.25	100.06	120.98	105.45	102.20	104.97	113.30
* Jan-Dec 2013	106.83	103.46	122.79	105.48	97.56	106.12	109.40
% Chg 14/13	-0.55	-3.29	-1.47	-0.03	4.75	-1.09	3.56

Table 8.11: January to December 2015 Quarterly Section Indices (Source: Statistics Department)

(January 2010 = 100)		Food and Non-Alcoholic Beverages	Alcoholic, Beverages Tobacco and Narcotics	Clothing and Footwear	Housing, Water, Electricity, Gas and Other Fuels	Furnishings, Household Equipment Maintenance	Health
Period	All Items						
2015							
First Quarter	105.44	108.18	109.19	126.36	97.71	110.70	109.27
Second Quarter	104.49	101.76	112.46	126.13	97.54	109.88	109.15
Third Quarter	104.22	100.64	115.09	125.43	97.34	108.43	108.61
Fourth Quarter	103.98	100.02	115.50	125.30	96.83	106.41	108.12
* Jan-Dec 2015	104.53	102.65	113.06	125.80	97.36	108.86	108.79
* Jan-Dec 2014	106.25	110.87	110.32	126.08	100.70	111.41	109.21
% Chg 15/14	-1.62	-7.42	2.48	-0.22	-3.32	-2.29	-0.38

Table 8.11(a): January to December 2015 Quarterly Section Indices continued (Source: Statistics Department)

(January 2010 = 100)		Transportation	Communication	Recreation and Culture	Education	Restaurants and Hotels	Miscellaneous Goods and Service
Period	All Items						
2015							
First Quarter	105.44	98.62	119.69	109.78	124.80	104.39	114.67
Second Quarter	104.49	98.81	120.05	110.44	124.80	104.39	112.17
Third Quarter	104.22	99.44	120.77	108.80	121.30	104.60	111.68
Fourth Quarter	103.98	102.00	120.31	107.09	114.31	105.07	108.59
* Jan-Dec 2015	104.53	99.72	120.21	109.03	121.30	104.61	111.78
* Jan-Dec 2014	106.25	100.06	120.98	105.45	102.20	104.97	113.30
% Chg 15/14	-1.62	-0.34	-0.64	3.39	18.70	-0.34	-1.34

Table 8.12: January to December 2016 Quarterly Section Indices (Source: Statistics Department)

(January 2010 = 100)		Food and Non-Alcoholic Beverages	Alcoholic, Beverages Tobacco and Narcotics	Clothing and Footwear	Housing, Water, Electricity, Gas and Other Fuels	Furnishings, Household Equipment Maintenance	Health
Period	All Items						
2016							
First Quarter	103.20	99.30	110.21	125.51	96.57	106.45	108.47
Second Quarter	103.59	98.67	113.13	125.47	96.26	106.14	107.92
Third Quarter	104.40	98.45	111.44	125.57	96.50	106.67	107.54
Fourth Quarter	103.15	98.08	113.53	125.52	96.73	106.24	106.45
* Jan-Dec 2016	103.58	98.62	112.08	125.52	96.51	106.37	107.59
* Jan-Dec 2015	104.53	102.65	113.06	125.80	97.36	108.86	108.79
% Chg 16/15	-0.91	-3.92	-0.87	-0.23	-0.86	-2.28	-1.10

Table 8.12(a): January to December 2016 Quarterly Section Indices continued (Source: Statistics Department)

(January 2010 = 100)		Transportation	Communication	Recreation and Culture	Education	Restaurants and Hotels	Miscellaneous Goods and Service
Period	All Items						
2016							
First Quarter	103.20	98.79	120.31	107.16	117.08	105.08	110.51
Second Quarter	103.59	100.78	122.10	106.27	117.08	105.08	111.36
Third Quarter	104.40	103.77	124.96	102.44	117.23	104.59	112.01
Fourth Quarter	103.15	105.31	99.64	102.03	117.52	105.55	114.54
* Jan-Dec 2016	103.58	102.17	116.75	104.48	117.23	105.08	112.10
* Jan-Dec 2015	104.53	99.72	120.21	109.03	121.30	104.61	111.78
% Chg 16/15	-0.91	2.46	-2.87	-4.17	-3.36	0.44	0.29

Table 8.13: January to December 2017 Quarterly Section Indices (Source: Statistics Department)

(January 2010 = 100)		Food and Non-Alcoholic Beverages	Alcoholic, Beverages Tobacco and Narcotics	Clothing and Footwear	Housing, Water, Electricity, Gas and Other Fuels	Furnishings, Household Equipment Maintenance	Health
Period	All Items						
2017							
First Quarter	102.57	97.59	113.71	126.02	96.89	106.98	106.45
Second Quarter	102.51	98.03	113.46	126.62	96.98	106.80	108.16
Third Quarter	102.69	98.54	113.30	116.89	103.46	110.10	109.02
Fourth Quarter	103.07	99.59	113.46	126.98	96.87	107.48	109.02
*Jan-Dec 2017	102.71	98.44	113.48	124.13	98.55	107.84	108.16
*Jan-Dec 2016	103.58	98.62	112.08	125.52	96.51	106.37	107.59
% Chg 17/16	-0.84	-0.19	1.25	-1.11	2.11	1.38	0.53

Table 8.13(a): January to December 2017 Quarterly Section Indices continued (Source: Statistics Department)

(January 2010 = 100)		Transportation	Communication	Recreation and Culture	Education	Restaurants and Hotels	Miscellaneous Goods and Service
Period	All Items						
2017							
First Quarter	102.57	106.29	87.07	102.39	117.52	105.54	114.42
Second Quarter	102.51	105.48	87.07	101.76	117.52	105.51	114.04
Third Quarter	102.69	106.14	87.07	101.58	117.77	105.89	113.96
Fourth Quarter	103.07	107.20	87.07	101.10	118.26	105.58	111.83
*Jan-Dec 2017	102.71	106.28	87.07	101.71	117.77	105.88	113.56
*Jan-Dec 2016	103.58	102.17	116.75	104.48	117.23	105.08	112.10
% Chg 17/16	-0.84	4.02	-25.42	-2.65	0.46	0.76	1.30

Table 8.14: January to December 2018 Quarterly Section Indices (Source: Statistics Department)

(January 2010 = 100)		Food and Non-Alcoholic Beverages	Alcoholic, Beverages Tobacco and Narcotics	Clothing and Footwear	Housing, Water, Electricity, Gas and Other Fuels	Furnishings, Household Equipment Maintenance	Health
Period	All Items						
2018							
First Quarter	102.41	99.68	114.73	127.37	97.48	106.33	109.24
Second Quarter	101.55	100.71	114.62	129.17	91.99	102.16	109.36
Third Quarter	101.56	100.21	114.45	129.17	92.25	102.12	109.36
Fourth Quarter	101.34	100.92	116.17	131.63	92.13	103.67	109.68
* Jan-Dec 2018	101.71	100.38	114.99	129.33	93.46	103.57	109.41
* Jan-Dec 2017	102.71	98.44	113.48	124.13	98.55	107.84	108.16
% Chg 18/17	-0.97	1.98	1.33	4.19	-5.16	-3.96	1.15

Table 8.14(a): January to December 2018 Quarterly Section Indices continued (Source: Statistics Department)

(January 2010 = 100)		Transportation	Communication	Recreation and Culture	Education	Restaurants and Hotels	Miscellaneous Goods and Service
Period	All Items						
<i>2018</i>							
<i>First Quarter</i>	102.41	103.43	87.07	100.84	115.47	105.86	112.89
<i>Second Quarter</i>	101.55	107.80	87.07	99.75	115.47	105.86	113.61
<i>Third Quarter</i>	101.56	108.18	87.07	99.90	112.35	105.45	113.51
<i>Fourth Quarter</i>	101.34	105.61	87.07	101.33	110.80	105.25	114.13
* Jan-Dec 2018	101.71	106.26	87.07	100.45	113.52	105.61	113.54
* Jan-Dec 2017	102.71	106.28	87.07	101.71	117.77	105.88	113.56
% Chg 18/17	-0.97	-0.02	0.00	-1.23	-3.61	-0.26	-0.02

Section 9 – Education

Table 9.1: General Information on Pre-schools and Nurseries on Nevis, 2010/11 – 2017/2018 (Source: Department of Education)

<i>Year</i>	<i>2010/11</i>	<i>2011/12</i>	<i>2012/13</i>	<i>2013/14</i>	<i>2014/15</i>	<i>2015/16</i>	<i>2016/17</i>	<i>2017/18</i>
<i>Private Preschool Centers</i>	7	7	7	6	6	5	6	6
<i>Government Preschool Centers</i>	3	3	3	4	4	4	4	4
<i>Total Supervisors for Public & Private Preschools</i>	10	10	10	10	10	9	9	9
<i>Total Auxiliary Staff for Public & Private Preschools</i>	24	29	30	29	28	30	27	33
<i>Supervisors/Auxiliary Staff for Nurseries</i>								
<i>Centre Based</i>	10	14	15	15	15	22	22	23
<i>Home Based</i>	15	12	13	13	13	16	15	15
<i>Total Children in Preschools</i>	370	374	352	357	322	357	367	320
<i>Total Children in Nurseries</i>	139	150	136	150	150	174	175	181
<i>Total Enrollment in Preschools and Nurseries</i>	509	524	488	507	472	531	542	501

Table 9.2: Number of Public and Private Primary Schools on Nevis, 2010/11 - 2017/18 (Source: Department of Education)

<i>Year</i>	<i>2010/2011</i>	<i>2011/2012</i>	<i>2012/2013</i>	<i>2013/2014</i>	<i>2014/2015</i>	<i>2015-2016</i>	<i>2016-2017</i>	<i>2017-2018</i>
<i>Primary Public and Private School</i>								
<i>Public</i>	7	7	7	7	7	7	7	7
<i>Private</i>	3	3	3	3	3	3	3	3
<i>Total</i>	10	10	10	10	10	10	10	10

Table 9.3: Number of Students and Teachers in Public Primary School, 2010/11- 2017/18 (Source: Department of Stats, Department of Education)

<i>Year</i>	<i>2010-2011</i>		<i>2011-2012</i>		<i>2012-2013</i>		<i>2013-2014</i>		<i>2014-2015</i>		<i>2015-2016</i>		<i>2016-2017</i>		<i>2017-2018</i>	
<i>Gender</i>	<i>Male</i>	<i>Female</i>	<i>Male</i>	<i>Female</i>	<i>Male</i>	<i>Female</i>	<i>Male</i>	<i>Female</i>	<i>Male</i>	<i>Male</i>	<i>Male</i>	<i>Female</i>	<i>Male</i>	<i>Female</i>	<i>Male</i>	<i>Female</i>
<i>Students</i>					575	575	549	552	560	515	528	516	515	494	534	497
<i>Teachers</i>					14	100	12	104	10	12	13	109	12	109	5	98

Table 9.4: Number of Students and Teachers in Private Primary School, 2010/11-2017/18 (Source: Stats, Nevis)

Year	2010-2011		2011-2012		2012-2013		2013-2014		2014-2015		2015-2016		2016-2017		2017-2018	
Gender	Male	Female	Male	Female	Male	Female	Male	Female	Male	Female	Male	Female	Male	Female	Male	Female
Students					56	53	56	59	68	74	77	99	79	95	82	103
Teachers					1	16	1	19	1	20	1	21	1	21	1	6

NB: Data provided for two of the three schools (Montessori)

Table 9.5: Number of Public and Private Secondary Schools on Nevis, 2010/11 – 2017/18 (Source: Department of Education)

Year	2010/2011	2011/2012	2012/2013	2013/2014	2014/2015	2015/2016	2016/2017	2017/2018
Public	2	2	2	2	2	2	2	2
Private	1	1	1	1	1	1	1	1
Total	3	3	3	3	3	3	3	3

Table 9.6: Number of Students and Teachers in Public Secondary School, 2010/11 – 2017/18 (Source: Department of Stats, Department of Education)

Year	2010-2011		2011-2012		2012-2013		2013-2014		2014-2015		2015-2016		2016-2017		2017-2018	
Gender	Male	Female	Male	Female	Male	Female	Male	Female	Male	Female	Male	Female	Male	Female	Male	Female
Students					413	491	513	546	481	520	473	492	442	459	507	533
Teachers					42	87	46	99	43	88	40	97	41	99	37	93

Table 9.7: Number of Students and Teachers in Private Secondary School in Nevis, 2011/12 – 2017/18 (Source: Department of Stats, Department of Education)

Year	2010-2011		2011-2012		2012-2013		2013-2014		2014-2015		2015-2016		2016-2017		2017-2018	
Gender	Male	Female	Male	Female	Male	Female	Male	Female	Male	Female	Male	Female	Male	Female	Male	Female
Students	17	15	15	13	15	13	6	6	16	16	16	17				
Teachers	2	9	2	7	2	7	2	7	2	9	2	9				

Table 9.8: CSEC Subject passes for Charlestown and Gingerland Secondary Schools, 2010-2018

Subject Passes	2010	2011	2012	2013	2014	2015	2016	2017	2018
0 - 2	75	69	57	40	40	24	41	30	18
3 - 5	54	46	41	54	63	52	45	56	52
6 - 8	39	47	35	48	53	41	50	50	47
9+	34	24	29	21	29	29	35	40	24
Total	202	186	162	163	185	146	171	176	141

Source: Department of Education

Table 9.9: CAPE Grade Distribution at the Charlestown Sixth Form College in Nevis, 2010-2018 (Source: Department of Education)

Number of Students									
Grade	2010	2011	2012	2013	2014	2015	2016	2017	2018
I	20	6	24	38	25	30	32	33	40
II	59	47	65	56	46	84	63	105	95
III	113	68	92	79	83	109	122	132	112
IV	122	125	118	101	95	125	156	103	126
V	130	150	139	116	102	131	141	100	127
VI	72	108	88	75	72	90	74	71	50
VII	20	30	11	13	15	19	24	22	15
	536	534	537	478	438	588	612	566	565

NB: Grades - I-V Passing Grades

Grades - VI-VII Failing Grades

Table 9.10: Enrollment of Students at the Nevis Sixth Form College in Nevis, 2010-2018 (Source: Charlestown Secondary High School)

Year	Sixth B		Sixth A		Total	
	Girls	Boys	Girls	Boys	Girls	Boys
2010	61	158	35	17	96	35
2011	51	35	38	11	89	46
2012	40	15	36	28	76	43
2013	49	28	26	10	75	38
2014	59	34	30	22	89	56
2015	50	26	37	29	87	55
2016	44	21	38	26	82	47
2017	48	25	34	18	82	43
2018	52	23	45	22	97	45

Table 9.11: Number of Students per subject passed, Gingerland Secondary School (Source: Department of Education)

Year	No. of Subjects													
	17	12	11	10	9	8	7	6	5	4	3	2	1	0
	No. of Students													
2010			2	2	5	3	8	7	10	3	2	12	30	6
2011		1	1	2	2	6	4	10	5	5	4	5	17	8
2012		2	1	4	3	2	5	3	4	6	4	6	15	2
2013			3	3	1	2	4	10	17	5	2	6	7	1
2014		1	1	3	5	3	10	5	6	2	15	7	3	2
2015			1	3	3	4	9	6	8	8	5	1	3	2
2016	1		1	4	5	5	5	5	2	1	2	2	16	1
2017		1	1	-	4	6	10	3	4	4	2	1	11	-
2018			1	4	5	9	1	5	4	5	1	1	1	-

Table 9.12: Number of Students per subject passed, Charlestown Secondary School (Source: Department of Education)

Year	No. of Subjects														
	15	13	12	11	10	9	8	7	6	5	4	3	2	1	0
	No. of Students														
2010			1	1	7	16	7	5	9	13	12	14	7	12	8
2011			1	1	6	10	10	10	7	6	16	10	9	9	21
2012				3	10	6	5	8	12	4	5	18	12	15	7
2013			-	2	6	6	10	9	13	12	9	9	9	14	3
2014		-	-	2	9	8	11	14	10	16	12	12	12	9	7
2015	1	1	-	1	10	9	7	6	9	9	10	12	8	8	2
2016			1	4	10	9	16	10	9	6	18	16	10	6	6
2017			3	5	10	16	12	8	11	19	16	11	8	8	2
2018				2	3	9	15	7	10	9	16	17	9	5	2

Table 9.13: Student – Subject Entries and Percentage Pass, Charlestown Secondary School (Source: Department of Education)

Years	2010	2011	2012	2013	2014	2015	2016	2017	2018
No. of Students	112	118	103	106	131	96	123	141	108
No. of Subjects Written	679	669	644	676	836	663	826	922	715
No. of Subjects Passed	565	526	473	514	642	535	665	768	564
Percentage Pass	83%	77%	73%	76%	77%	81%	81%	83%	79%

Table 9.14: Student – Subject Entries and Percentage Pass, Gingerland Secondary School (Source: Department of Education)

Years	2010	2011	2012	2013	2014	2015	2016	2017	2018
No. of Students	90	72	57	66	69	54	50	50	37
No. of Students Written	419	348	339	416	410	351	281	284	262
No. of Subjects Passed	332	285	255	310	330	295	258	253	251
Percentage Pass	79%	82%	75%	75%	80%	84%	92%	89%	96%

Table 9.15: Nevis Sixth Form College CAPE Results – 2018 (Source: Department of Education)

Subjects	I	II	III	IV	V	VI	VII	Number Sat	# of Passes	%Passed
<i>Accounting Unit 1</i>	1	1	4	3	5	3	1	18	14	77.78%
<i>Accounting Unit 2</i>	1	1	1	1	2	1		7	6	85.71%
<i>Agricultural Science Unit 2</i>			2	6	3			11	11	100.00%
<i>Applied Mathematics Unit 1</i>		1						1	1	100.00%
<i>Applied Mathematics Unit 2</i>		1						1	1	100.00%
<i>Art and Design Unit 1</i>		3	3	1				7	7	100.00%
<i>Art and Design Unit 2</i>				3	2			5	5	100.00%
<i>Biology Unit 1</i>		1	1		1			3	3	100.00%
<i>Biology Unit 2</i>		2	7	2				11	11	100.00%
<i>Building and Mechanical Engineering Drawing Unit 1</i>					3			3	3	100.00%
<i>Building and Mechanical Engineering Drawing Unit 2</i>					1	1		2	1	50.00%
<i>Caribbean Studies Unit 1</i>	7	17	19	6	1			50	50	100.00%
<i>Chemistry Unit 1</i>			4					4	4	100.00%
<i>Chemistry Unit 2</i>		1	3		1			5	5	100.00%
<i>Communication Studies Unit 1</i>	2	5	13	24	24	5	2	75	68	90.67%
<i>Computer Science Unit 1</i>				2		1	2	5	2	40.00%
<i>Computer Science Unit 2</i>		1		2		1	1	5	3	60.00%
<i>Digital Media Unit 1</i>		6	4	3	1			14	14	100.00%
<i>Economics Unit 1</i>	1	1	2	5	7	8	3	27	16	59.26%
<i>Economics Unit 2</i>			3	4	3	1	1	12	10	83.33%
<i>Entrepreneurship Unit 1</i>	1							1	1	100.00%
<i>Entrepreneurship Unit 2</i>	1							1	1	100.00%
<i>Environmental Science Unit 2</i>	4	3	2	5	5			19	19	100.00%
<i>French Unit 1</i>	1		1	1				3	3	100.00%
<i>French Unit 2</i>	2							2	2	100.00%
<i>Geography Unit 1</i>				4	2			6	6	100.00%
<i>Green Engineering Unit 1</i>		1						1	1	100.00%
<i>Green Engineering Unit 2</i>		1						1	1	100.00%
<i>History Unit 1</i>		1	3	2	2			8	8	100.00%
<i>History Unit 2</i>		1		1	2	2		6	4	66.67%
<i>Information Technology Unit 2</i>	2	3	4	6	8			23	23	100.00%
<i>Integrated Mathematics Unit 1</i>	2		6	5	22	14	2	51	35	68.63%
<i>Law Unit 2</i>	4	8		1	2			15	15	100.00%
<i>Literatures in English Unit 1</i>		1		3	1			5	5	100.00%

<i>Literatures in English Unit 2</i>			2	2	1			5	5	100.00%
<i>Management Business Unit 2</i>	4	14	13	13	16	8	1	69	60	86.96%
<i>Physical Education and Sport Unit 1</i>		1						1	1	100.00%
<i>Physical Education and Sport Unit 2</i>		1						1	1	100.00%
<i>Physics Unit 1</i>		2	1	1	1			5	5	100.00%
<i>Physics Unit 2</i>		2	2					4	4	100.00%
<i>Pure Mathematics Unit 1</i>	1	1		2		1	1	6	4	66.67%
<i>Pure Mathematics Unit 2</i>		2		2	1			5	5	100.00%
<i>Sociology Unit 1</i>										
<i>Sociology Unit 2</i>		3	3	6	2	2	1	17	14	82.35%
<i>Spanish Unit 1</i>	1	2	2		1			6	6	100.00%
<i>Spanish Unit 2</i>	2	1						3	3	100.00%
<i>Tourism Unit 1</i>	1	3	4	4	4	2		18	16	88.89%
<i>Tourism Unit 2</i>	2	3	3	6	3			17	17	100.00%
SUBTOTAL	40	95	112	126	127	50	15	565	500	88.50%

Table 9.16: Final scores for Primary School Athletic Championship in Nevis, 2010-2018

Gulf Insurance Primary School Championship 2010 - 2018									
Name of School	2010	2011	2012	2013	2014	2015	2016	2017	2018
<i>St. Thomas'</i>	161	164	197	199	145	155	182	191	168
<i>VOJN</i>	54	42	42	50	54	34	18	32	42
<i>St. James</i>	73	91	57	59	59	50	32	27	9
<i>Joycelyn Liburd</i>	182	197	170	142	141	178	117	163	180
<i>Elizabeth Pemberton</i>	82	70	79	81	105.5	139	152	125	126
<i>Ivor Walters</i>	83	92	86	85	134.5	140	159	158	93
<i>Charlestown</i>	180	168	183	200	191	134	153	128	185
<i>Maude Cross Preparatory</i>	49	44	56	50	36	34	51	42	61

Source: <https://sites.google.com> and Department of Statistics

Section 10 – Employment

Table 10.1: Average Employees by Selected Industries and Services 2010-2018(**)

Industries and Services	2010	2011	2012	2013	2014	2015	2016	2017	2018
Agriculture	60	55	71	79	109	49	126	105	130
Baking	37	36	28	27	23	22	30	27	10
Civil Service	755	785	811	827	834	861	876	896	903
Commercial	358	370	390	398	370	338	344	352	495
Construction	465	413	376	450	541	393	528	488	374
Domestic	162	140	163	146	156	132	136	132	118
Financial	277	246	206	227	232	213	222	231	223
Hotel & Guest Houses	613	1,028	1,069	1,057	1,090	1,079	1,108	1,142	957
Manufacturing	72	67	60	46	49	41	46	44	52
NE Workers	650	361	720	761	776	755	899	907	963
Restaurants	129	145	135	127	153	165	230	173	225
Services	372	476	484	257	535	571	610	277	501
Statutory Corporations	273	280	260	497	268	276	298	588	247
Telecommunications	60	167	55	28	40	46	48	55	43
Transportation	72	62	54	68	52	50	69	65	69
Total	4,355	4,631	4,882	4,995	5,228	4,991	5,570	5,482	5,310

(** figures round up)

Source: Labour Department, Nevis

Table 10.2: Work Permit application by Sectors, 2010-2018

Sector	2010	2011	2012	2013	2014	2015	2016	2017	2018
Agriculture	76	81	63	61	47	47	36	43	38
Baking	10	11	7	5	5	5	1	6	3
Nevis Island Administration	148	133	90	69	67	65	30	36	54
Domestic	44	34	33	30	12	4	4	8	27
Construction	301	184	130	87	58	116	98	85	86
Commercial	121	53	38	31	21	25	27	26	66
Financial	12	8	7	10	10	8	8	8	2
Hotel and Guest Houses	74	101	81	96	71	65	59	82	56
Manufacturing	41	34	27	7	14	6	10	17	10
Restaurants	57	56	53	53	47	45	53	63	53
Services	204	177	158	171	148	157	159	150	145
Statutory Corporation	18	11	9	9	6	5	1	7	3
Telecommunication	2	0	0	0	0	0	3	1	0
Transportation	4	12	10	9	12	2	1	1	4
Total	1,112	895	706	638	518	550	490	533	547

Source: Department of Labour

Table 10.3: Work Permit application by sector and by sex in Nevis, 2012 - 2018

	2012		2013		2014		2015		2016		2017		2018	
Sector	M	F	M	F	M	F	M	F	M	F	M	F	M	F
Agriculture	54	9	48	13	39	8	29	18	21	15	30	13	29	9
Baking	5	2	3	2	3	2	2	3	0	1	0	6	2	1
Domestic	2	31	4	26	2	10	0	4	0	4	0	8	1	26
Construction	123	7	85	2	14	7	115	1	93	5	79	6	80	6
Commercial	19	19	16	15	56	2	9	16	15	12	9	17	39	27
Financial	6	1	5	5	6	4	6	2	7	1	6	2	0	2
Hotel & Guest Houses	59	22	76	20	58	13	55	10	50	9	69	13	19	37
Manufacturing	22	5	5	2	13	1	4	2	7	3	8	9	5	5
Miscellaneous	0	0	0	0	0	0	0	0	0	0	0	0	0	0
Nevis Island Administration	44	46	43	26	37	30	27	38	17	13	18	18	24	30
Restaurant	24	29	19	34	24	23	17	28	28	25	26	37	30	23
Services	92	66	96	75	49	99	89	68	80	79	76	74	88	57
Statutory Corporation	8	1	7	2	3	3	3	2	1	0	7	0	3	0
Telecommunication	0	0	0	0	0	0	0	0	3	0	1	0	0	0
Transportation	10	0	9	0	8	4	2	0	1	0	1	0	4	0
Total	468	238	416	222	312	206	358	192	323	167	330	203	324	223

Source: Department of Labour

Table 10.4: Work Permit application by Region/Nationality and by Sex in Nevis, 2013-2017

	Nationality by Sex											
Region/Nationality	2013		2014		2015		2016		2017		2018	
	Male	Female	Male	Female	Male	Female	Male	Female	Male	Female	Male	Female
CARICOM/OECS	210	112	113	101	95	82	73	69	105	96	122	107
Other Caribbean	20	23	28	25	30	29	63	43	64	49	53	36
Canada	11	7	11	5	11	2	8	5	4	0	6	1
Americas	6	6	4	2	3	3	7	1	5	0	1	4
United States	53	30	27	41	50	16	30	17	23	17	28	12
Europe/CIS	14	2	14	4	7	4	12	2	17	3	8	5
United Kingdom	14	5	9	2	11	2	10	2	9	0	14	1
Africa	11	6	12	2	3	0	7	1	9	2	5	4
Asia	60	17	81	15	130	42	100	15	84	28	78	41
Pacific	17	14	13	9	18	12	13	12	10	8	9	12
Total	416	222	312	206	358	192	323	167	330	203	324	223
	638		518		550		490		533		547	

Source: Department of Labour

Section 11 – Agriculture Production & Trade

Table 11.1: Egg Production per quartile, 2010-2018 (Source: Agriculture Department)

Year	Production per 1 st Quarter	Production per 2 nd Quarter	Production per 3 rd Quarter	Production per 4 th Quarter	Total per Year
2010	23,027	26,845	16,380	26,894	93,146
2011	27,630	25,935	25,760	25,300	104,625
2012	24,570	28,483	29,624	30,937	113,614
2013	27,000	26,756	26,864	21,344	101,964
2014	35,660	35,623	38,770	50,540	160,593
2015	44,013	44,365	26,810	41,985	157,173
2016	43,302	52,506	43,260	34,558	173,626
2017	37,563	34,905	33,555	25,566	131,589
2018	45,254	42,691	51,504	50,857	190,306

Table 11.2: Throughput (lbs.) at the Marketing Division on an annual basis 2013-2018

Produce	2013	2014	2015	2016	2017	2018
Apple	0	0	0	0	18	0
Arugula	0	0	2	0	0	0
Apricot	175	0	0	0	0	0
Avocado	255	60	835	963	244	54
Basil	155	145	8	20	3	0
Bora Beans	140	485	217	82	42	33.5
Breadfruit	495	525	564	558	490	99
Broccoli	0	65	0	55	0	0
Butternut Squash	5,495	9,140	4,117.5	9,425.50	6,871	6,236
Cabbage	2,275	400	1,303.5	1,004	228	1,696
Cantaloupe	8,680	4,350	1,440	1,993.5	298	50
Cauliflower	0	0	0	31	0	0
Carrots	425	725	0	135	0	0
Cassava	705	785	402	204	122	46.5
Celery	0	0	26	4	0	2
Chile Peppers	0	0	0	5	0	0
Christophene	355	525	628.5	66	65	101
Cassava Meal	5	0	0	0	0	0
Cherry Tomato	105	465	943	175	48	10
Coconut	735	550	340	240	601	288
Cucumber	12,700	17,040	14,201.5	14,043.5	9,300	10,643
Dasheen	55	185	287	590	56	5
Dragon Fruit	50	310	0	0	0	0
Eddoes	5	80	258	191	15	0
Eggplant	2,145	1,930	2,163	1,358	799	490
Fat Pork	0	0	3	0	0	0
Garlic	0	0	3	45	0	0

<i>Produce (continued)</i>	<i>2013</i>	<i>2014</i>	<i>2015</i>	<i>2016</i>	<i>2017</i>	<i>2018</i>
<i>Ginger</i>	125	215	150	449	214	155
<i>Ginip</i>	300	0	14	45	0	0
<i>Grapefruit</i>	1,890	505	140	414	155	0
<i>Greens</i>	0	0	0	0	6	0
<i>Green Banana</i>	2,545	3,510	3,898	3,454	3,042	2,395
<i>Green Mango</i>	0	0	12	0	0	0
<i>Green Papaya</i>	470	600	758	746	503	258
<i>Guava</i>	75	0	466	394	97	0
<i>Golden Apple</i>	55	0	172	86	5	0
<i>Herbs and Thyme</i>	475	225	52	275	134	217
<i>Hot Peppers</i>	195	25	5	2	15	7
<i>Honey Dew Melon</i>	5,555	5,390	3,251	6,019.5	2,469.5	1,155
<i>Jelly</i>	350	130	269	371	718	1,576
<i>Jujubi</i>	0	0	4	0	0	0
<i>Kale</i>	0	0	0	0	0	10
<i>Lemon Grass</i>	45	10	0	0	0	5
<i>Lettuce</i>	770	515	641	276	110	*107
<i>Limes</i>	520	285	80.5	13	0	20
<i>Mangoes Improved</i>	1,410	3,410	1,425	1,415	372	354
<i>Mango Unimproved</i>	0	70	0	0	0	0
<i>Manciport</i>	0	0	754	431	16	0
<i>Mint</i>	5	0	8.5	3	0	17
<i>Musk Melon</i>	0	425	0	2	0	0
<i>Okra</i>	4,385	1,155	1,176.5	1,088.5	391	326
<i>Onion</i>	4,955	2,845	14,479	9,463	174	1,663
<i>Oranges</i>	40	50	44	252	6	50
<i>Orange Pepper</i>	0	0	28	791.5	0	0
<i>Pak-choi</i>	0	0	0	5	12	5
<i>Papaya Ripe</i>	405	100	1,258.5	1,817	977.5	36
<i>Passion Fruit</i>	95	200	723	718	18	10
<i>Pigeon Peas</i>	190	0	0	0	0	0
<i>Pineapple</i>	4,020	2,415	2,756	665	332	1,998
<i>Plantain</i>	2,585	2,200	2,064	1,277	1,505	658
<i>Plum Tomato</i>	0	0	95	0	0	0
<i>Pomegranite</i>	0	0	0	109	0	0
<i>Pomerac</i>	15	0	0	0	0	0
<i>Pumpkin</i>	10,580	6,730	10,773	12,681	12,648	8,591
<i>Purple Pepper</i>	0	30	0	0	0	0
<i>Purple Potato</i>	0	0	38	211	0	40
<i>Raddish</i>	0	0	0	2	0	0
<i>Red Pepper</i>	0	160	975	1,722.5	0	3,706
<i>Ripe Banana</i>	8,060	15,610	17,794	16,169	14,338	8,682
<i>Ripe Plantain</i>	3,270	4,445	6,671	6,039	3,323	1,918
<i>Roma Tomato</i>	0	860	250	0	0	736
<i>Rosemary</i>	25	0	0	0	0	0
<i>Seasoning Pepper</i>	1,315	525	877	1,586.5	746	685
<i>Sea Grapes</i>	55	0	0	0	0	0
<i>Silk Banana</i>	485	265	852	268	96	92
<i>Sorrel</i>	0	360	231	167	330	226
<i>Sour Sop</i>	80	50	1120	444	59	0

Produce (continued)	2013	2014	2015	2016	2017	2018
Star Apple	0	195	457	164	0	0
String Beans	1,900	1,555	25	201	160	99.5
Sugar Apple	45	130	0	0	33	28
Sugar Cane	15	15	55	0	0	10
Sweet Corn	1,605	235	42	407	0	917
Sweet Pepper	5,160	2,265	1,356	1,196.5	684	3,575.5
Sweet Potato	16,640	10,590	11,952.5	8,872	8,524	4,091
Spinach	125	115	210	304	218	391
Tania	690	1,660	2,247	2,384	2,196.5	1,202
Tangerine	0	0	0	335	0	0
Tamarind	0	40	0	0	0	0
Thyme	255	100	16	71	16	53
Tomatoes	21,715	22,115	29,574.5	23,278.5	13,425	15,559.5
Watermelon	35,310	26,955	32,657.5	24,185.5	14,674.5	7,372
Wax Apple	10	35	115	11	12	18
White Potato	0	330	0	0	42	331
Yams	350	910	1,357.5	1,472	807	716
Yellow Pepper	0	60	1,021	0	21	7
Zucchini	655	70	60	13	0	54
Total	174,775	158,455	183,193	163,954	102,825	89,876.50

(Source: Agriculture Department)

Table 11.3: Accumulative total of acreage farmed and estimated yield 2013-2018

Institution	Criteria	2013	2014	2015	2016	2017	2018
Farmers	Acres	52.44	74.41	73.25	59.10	59.04	63.08
	Yield (kg)	566,184	738,879	832,845	300,169.26	293,113.39	319,553.56
Government	Acres	22.4	65.57	37.02	23.6	25	32.66
	Yield (kg)	74,460	297,424	218,243	84,005.31	126,089.82	139,558.35
Total	Acres	74.84	739.98	110.27	82.70	84.04	99.74
	Yield (kg)	640,644	1,036,303	1,051,088	384,174.57	419,203.21	459,111.91

(Source: Agriculture Department)

Table 11.4: Production Analysis of Targeted Crops (Kg), 2013-2018

Estimated annual total production of Targeted Crops (Kg) for 2013 - 2018						
Crops	2013	2014	2015	2016	2017	2018
Cabbage	1,361	1,750	1,100	8,050	10,800	5,450
Cantaloupe/Honey Dew	20,729	60,050	125,350	76,700	79,700	42,540
Carrot	3,610	10,400	4,040	2,440	680	79
Corn	3,823	2,920	15,840	800	9,440	22,701
Onion	9,185	52,258	67,480	100,500	91,000	38,499
Pumpkin	27,033	99,680	53,320	71,020	36,040	107,621
Sweet pepper	8,537	27,020	21,625	29,780	22,400	42,000
Sweet potato	4,818	25,885	26,580	12,120	9,040	38,301
Tomato	46,406	142,830	162,833	135,250	145,250	141,199
Watermelon	70,239	234,830	251,050	175,500	220,700	260,350
Total	195,741	657,623	729,218	612,160	625,050	698,741

(Source: Agriculture Department)

Table 11.5: Top ten targeted Crops (lbs.) for the period 2013-2018

Crop	Criteria	2013	2014	2015	2016	2017	2018	Production as a % of Imports 2018
Cabbage	Imports	115,063	135,886	43,200	59,592.97	27,053	46,685.54	18.1
	Produce	1,361	1,750	499	3,651	4,899	2,472	
Carrots	Imports	105,259	133,833	63,662	69,646.84	65,827	80,927	.47
	Produce	20,729	10,400	1,833	1,106	309	37	
Cantaloupe/Honeydew	Imports	20,519	114,580	84,240	73,010.23	54,627	85,799	66.2
	Produce	3,610	60,050	56,812	34,790	36,151	19,296	
Corn	Imports	21,364	31,364	14,764	16,040.84	19,355	35,534	22.1
	Produce	3,823	2,920	7,185	363	4,282	10,296	
Sweet Peppers	Imports	31,058	41,067	54,203	60,713.34	41,123	30,007	31.3
	Produce	8,537	27,020	9,810	13,508	12,882	19,051	
Pumpkin	Imports	2,459	0	0	0	0	0	100
	Produce	27,033	99,680	24,186	32,214	16,347	48,816	
Sweet Potato	Imports	0	0	2,345	3,207	31,147	11,863	13.2
	Produce	4,818	25,885	12,056	5,770	4,100	17,373	
Tomato	Imports	35,076	50,565	26,019	45,835	22,251	14,909	296
	Produce	46,406	142,830	73,845	61,348	65,884	64,047	
Watermelon	Imports	0	2,760	12,699	14,662.83	11,684	13,318	856.8
	Produce	70,239	234,830	113,874	79,605	100,108	118,093	
Onion	Imports	127,076	204,009	76,940	90,569	78,508	82,516	52.6
	Produce	12,133	52,258	30,608	58,286	41,277	17,463	

(Source: Agriculture Department)

Table 11.6: Annual production of popular animals' slaughter, 2010-2018

Animals	2010	2011	2012	2013	2014	2015	2016	2017	2018
Steers	7	0	2	2	0	2	3	0	1
Heifers	20	34	31	17	26	38	27	25	21
Cows	83	74	96	48	67	38	37	26	43
Bulls	133	117	75	96	82	77	68	78	97
Sheep	1,300	1,144	1,090	1,253	1,398	1,461	1,598	1,763	2,118
Goats	617	623	532	520	553	573	597	731	758
Pigs	1,433	1,052	856	1,208	1,578	1,908	1,977	1912	1,735
	3,593	3,044	2,682	3,144	3,704	4,097	4,307	4,535	4,773

(Source: Agriculture Department)

Table 11.7: Estimated Landings of species of fishes (lbs.) 2013-2017 (Source: Fisheries Depart.)

Species	2013	2014	2015	2016	2017
Snapper	7,270	19,221	29,060	30,619	23,604
Grouper	223	692	965	997	579
Old Wife	208	1,016	3,140	2,020	1,203
Conch	81,403	98,017	78,071	110,597	60,439
Lobster	5,799	12,046	12,682	14,458	7,853
Gar	1,401	4,621	5,824	11,870	3,568
Ballyhoo	2,000	4,716	13,992	17,561	13,449
Jacks	236	4,915	5,427	1,137	1,972
Dolphin	6,636	12,046	38,160	14,319	27,692
Wahoo	3,255	5,282	9,747	6,909	9,284
Kingfish	131	90	65	56	158
Skip Jack	91	1,801	1,541	3,178	3,227
Lion Fish	19	393	221	225	55
Tuna	2,308	1,140	808	535	2,396
Bonito	0	0	0	0	280
Mackerel	42	145	28	2	0
Mah Mahi	0	0	0	18,129	0
Mullet	0	0	0	0	0
Marlin	1,474	350	1,785	392	1,565
Shark	250	268	502	415	1,239
Barracuda	365	822	508	541	468
Shell Fish	384	1,988	1,674	1,644	1,394
Crab	23	52	0	0	0
Mixed Fish	54,306	93,737	64,190	48,194	31,453
Tarpon	0	0	12	0	80
Squid	0	0	0	0	0
Turtle	350	1,985	2,710	133	535
Blue Runner	0	0	1,220	1,542	3,761
Congo Eel	162	157	0	20	0
Sword Fish	0	0	298	0	80
Sail Fish	0	0	36	312	75
Total in (lbs.)	168,336	265,500	272,666	285,805	196,409
Value in (EC\$)	1,598,045	2,564,223	2,778,336	3,050,529	2,119,464

Table 11.8: Export of Seafood per pound on a yearly basis, 2010-2018

Year	Lobster	Conch	Crab	Conch Shell	Total
2010	2,378	140,356	0	0	142,734
2011	139	291,408	3,167	33	294,747
2012	214	110,111	1,275	14	111,614
2013	235	331,881	2,803	38	334,957
2014	3,542	122,839	4,485	340	131,206
2015	1,288	972,593	5,535	205	979,621
2016	160	109,855	2,730	52	112,797
2017	436	85,128	1,011	44	86,619
2018	14,618	48,252	1,870	472	68,920

(Source: F Department)

Table 11.9: Number of livestock slaughtered at the Abattoir 2013-2018

<i>Livestock</i>	<i>2013</i>	<i>2014</i>	<i>2015</i>	<i>2016</i>	<i>2017</i>	<i>2018</i>	<i>% Change</i>
<i>Large Ruminants</i>	163	175	155	135	129	162	25.59
<i>Small Ruminants</i>	1773	1,951	2,034	2,195	2,494	2876	15.32
<i>Pigs</i>	1208	1,578	1,908	1977	1,912	1841	(3.72)
<i>Total</i>	<i>3,144</i>	<i>3,704</i>	<i>4,097</i>	<i>4,307</i>	<i>4,535</i>	<i>4,879</i>	<i>7.59</i>

Source: Abattoir records

Table 11.10: Average carcass weight (kg) of livestock slaughtered at the Abattoir 2013-2018

<i>Livestock</i>	<i>2013</i>	<i>2014</i>	<i>2015</i>	<i>2016</i>	<i>2017</i>	<i>2018</i>	<i>% Change</i>
<i>Large Ruminants</i>	162.65	265.02	598	617.56	660.41	652.44	(1.21)
<i>Small Ruminants</i>	11.19	20.06	46	46.78	45.98	43.51	(5.38)
<i>Pigs</i>	32.24	57.65	121	118.87	119.22	119.97	.63

Source: Abattoir records

Table 11.11: Output from Propagation Unit of vegetable seedlings, fruit trees and herbs, 2013-2018

<i>Type</i>	<i>2013</i>	<i>2014</i>	<i>2015</i>	<i>2016</i>	<i>2017</i>	<i>2018</i>	<i>% change</i>
<i>Vegetable Seedlings</i>	79,456	121,766	63,165	54,372	69,312	105,442	52.13
<i>Fruit trees</i>	2,510	4,087	7,036	4,665	7,854	5,823	(25.86)
<i>Herbs</i>	450	1,016	1,563	731	364	3,719	921.71

(Source: Agriculture Department)

Table 11:12: Estimated Fish Landing per quartile, 2018 (Source: Fisheries Department)

Species by Gear Type	1st Quarter	2nd Quarter	3rd Quarter	4th Quarter	Total
TRAP/LINE/SPEARGUN					
Surgeon fish (Acanthuridae)	2,623	4,754	3,919	8,005	19,301
Trigger fish (Balistidae)	2,516	3,090	4,042	2,273	11,921
Grunts (Pomadasyidae)	1,218	2,093	2,562	4,771	10,645
Squirrel fish (Holocentridae)	1,244	1,825	2,371	1,937	7,376
Snappers (Lutjanidae)	11,920	4,785	9,852	21,331	47,889
Goat Fish (Mullidae)	288	125	98	0	511
Parrot fish (Scaridae)	2,056	3,604	3,971	6,182	15,812
Groupers (Serranidae)	2,988	2,827	5,314	4,974	16,103
Lobsters (Panulirus argus)	1,662	1,126	1,247	2,823	6,859
Mixed (others)	541	756	1,151	677	3,125
Total	27,056	24,985	34,526	52,974	139,541
NETS (Seine, Ballyhoo, etc)					
Gars (Belonidae)	1,720	5,068	1,189	340	8,316
Bollyhoo (Exocoetidae)	6,774	4,591	498	10,633	22,495
Jacks (Selar crumenophthalmus)	774	727	34,880	73	36,454
Tuna (Thunnus)	1,438	797	0	50	2,286
Mackerel (Scombridae)	0	958	160	0	1,118
Mixed (others)	100	100	700	527	1,427
Total	10,805	12,241	37,427	11,623	72,095
(TROLLING/LONGLINE)					
Wahoo (Acanthocybium solandri)	2,049	2,336	3,458	4,382	12,225
Dolphin (Coryphaena hippurus)	11,208	16,412	20,703	17,625	65,948
Marlin (Makaria nigricans)	462	462	967	473	2,365
Tuna (Thunnus)	109	165	855	3,662	4,791
Mackerel (Scombridae)	82	115	361	87	645
Mixed (others)	385	1,519	2,936	4,715	9,556
Total	14,296	21,010	29,280	30,944	95,529
SCUBA/SKIN					
Conch (Strombus gigas)	5,352	2,972	19,015	32,394	59,733
Lobsters (Panulirus argus)	2,423	729	5,514	6,024	14,690
Total	7,774	3,701	24,529	38,418	74,422
	59,931	61,936	125,762	133,959	381,588

Table 11:13: Product and quantity of value added commodities sold at the Abattoir, 2013-2018

PRODUCT	2013 (Kg)	2014 (Kg)	2015 (Kg)	2016 (Kg)	2017 (Kg)	2018 (Kg)	%Change 2018
Beef Burgers	1519.40	1,799.75	2,729	1,597.96	3,219.33	2,983	(7.34)
Beef Patties	0	0	0	0	0	749.2	100
Beef Nuggets	0	30.16	0	0	0	0	0
Beef Sausages	38.44	50.62	21	15	30	90	200
Chicken Burgers	185.25	281.21	325	182.80	265.05	228	(13.98)
Chicken Sausages	34.83	41.73	20	98.88	155	185	19.35
Chicken Nuggets	0	0	0	0	0	53	100
Chicken Patties	0	0	0	0	0	177	100
Ground Beef	10,192	11,721.28	5,899	5,366	10,978	14,386	31.05
Ground Chicken	0	0	302	252.20	547	441	(19.38)
Ground Pork	0	0	36	114.76	211	48	(77.26)
Local Chicken	0	0	0	0	0	2,014.58	100
Pork Bacon	0	0	0	0	178.88	108	(39.63)
Pork Burgers	0	0	0	125.19	0	0	0
Port Nuggets	0	0	0	33.16	0	0	0
Pork Sausages	213.20	268.37	329	239.07	590	468	(20.68)
Season Pork Roast	0	0	0	0	182	0	0
Season Pork Roast (cooked)	0	0	0	0	42	0	0
Seasoned Beef Burgers	0	0	137	140.61	387.73	310.21	(20)
Seasoned Beef Patties	0	0	0	0	0	127.8	100
Seasoned Beef Roast	0	0	14	124.74	0	0	0
Smoke Beef	83.16	65.59	29	53.18	64	129.7	102.66
Smoke Chicken	72.57	110.5	28	97.02	462.07	383.26	(17.06)
Smoke Ham	258.39	487.34	658	615.72	1,220.2	2,660.78	118.06
Smoked Pork Ribs	0	0	0	0	343.96	219.26	(36.26)
Tripe	449.41	828.02	1,178	1,149.36	2,848.04	2,977.43	4.55
TOTAL	13,060.26	15,684.57	11,705	10,205.65	21,724.26	28,739.22	32.29

(Source: Agriculture Department/Abattoir records)

Table 11:14: Total Exports for period 2013-2018

Importing Countries	Nature of Export	2013		2014		2015		2016		2017		2018	
		Value \$	Volume (kg)	Value \$	Volume (kg)	Value \$	Volume (kg)	Value \$	Volume (kg)	Value \$	Volume (kg)	Value \$	Volume (kg)
US	Clay Pots	1,147.50	30	0	0	0	0	0	0	0	0	0	0
	Plants	0	0	0	0	0	0	0	0	0	0	18,805.5	3,402
St. Maarten	Fruits and Vegetables	9,569.56	1,553	6,050	1,027	2,743	494	0	0	500	70	0	0
Montserrat	Fruits and Vegetables	9,719.5	1,565	23,325	4,734	21,415	3,958	3,495	531.82	6,615	987.82	0	0
British Virgin Islands	Mangoes	0	0	60.00	15	0	0	0	0	0	0	0	0
Anguilla	Live Swine	0	0	0	0	0	0	0	0	0	0	0	0
	Clay Soil	0	0	1,080.00	1,800	24,158	4,452	0	0	0	0	0	0
Albania	Coconut Jelly	0	0	0	0	0	0	0	0	0	0	891	159

Source: Customs Department (based on available data)

Section 12 – Trade

Table 12.1: Total value of imports, Nevis 2010-2018 (Source: Customs Department, Nevis)

<i>Year</i>	<i>Total</i>	<i>Cumulative Total</i>
2010	\$108,769,818.90	\$108,769,818.90
2011	\$121,950,706.60	\$230,720,525.50
2012	\$112,038,761.00	\$342,759,286.50
2013	\$120,675,322.70	\$463,434,609.20
2014	\$142,556,590.19	\$605,991,199.39
2015	\$128,533,323.45	\$734,524,522.84
2016	\$157,018,239.15	\$891,542,761.99
2017	\$183,805,063.60	\$1,075,347,825.59
2018	\$206,464,765.44	1,281,812,591.03

Table 12. 2: Total value of exports, Nevis 2013-2018 (Source: Customs Department, Nevis)

<i>Year</i>	<i>Total</i>	<i>Cumulative Total</i>
2013	\$850,281.86	\$850,281.86
2014	\$1,259,125.50	\$2,109,407.36
2015	\$725,908.23	\$2,835,315.39
2016	\$473,732.18	\$3,309,047.77
2017	\$687,469.95	\$3,996,517.72
2018	\$1,033,076.30	\$5,029,594.02

Section 13 – *Rainfall*

Table 13:1: Monthly Rainfall Data (mm) 2010-2018 (Source: Nevis Air & Sea Ports Authority)

<i>Month</i>	<i>2010</i>	<i>2011</i>	<i>2012</i>	<i>2013</i>	<i>2014</i>	<i>2015</i>	<i>2016</i>	<i>2017</i>	<i>2018</i>
<i>January</i>	37.8	28.5	76	28.6	49.3	34.5	48	74.1	63.1
<i>February</i>	2.7	27.4	31	18	22.7	24.5	29.3	14.6	28.5
<i>March</i>	27.1	50.2	48.9	44.2	13.1	23.9	43.8	49.2	5.4
<i>April</i>	174.3	22.2	27.7	89.2	36.5	51.4	97.4	100.4	52.7
<i>May</i>	117.2	215.9	143.7	335	75.1	6.3	40.6	160.1	126.2
<i>June</i>	205.3	45.6	18.1	84.5	65.8	22.7	47.7	115.2	44.5
<i>July</i>	256.2	237.6	149.7	53.1	16.6	55.6	136.3	44.7	67.2
<i>August</i>	221.2	200.9	47.5	105.5	70.1	97.0	128.0	83.5	72.4
<i>September</i>	137.9	278.5	56.5	87.6	75.0	53.3	80.8	378.8	98.8
<i>October</i>	427.7	61.6	350.9	65.6	48.4	160.0	129.5	164.4	120.0
<i>November</i>	59.4	285.2	30.7	66.8	182.4	96.4	147.3	47.2	27.0
<i>December</i>	59.4	232.6	60.1	136.2	117.3	46.7	77.0	120.7	51.6

Table 13:2: Monthly Rainfall Data during Hurricane Season, 2010-2018

<i>Month</i>	<i>2010</i>	<i>2011</i>	<i>2012</i>	<i>2013</i>	<i>2014</i>	<i>2015</i>	<i>2016</i>	<i>2017</i>	<i>2018</i>
<i>June</i>	205.3	45.6	18.1	84.5	65.8	22.7	47.7	115.2	44.5
<i>July</i>	256.2	237.6	149.7	53.1	16.6	55.6	136.3	44.7	67.2
<i>August</i>	221.2	200.9	47.5	105.5	70.1	97.0	128.0	83.5	72.4
<i>September</i>	137.9	278.5	56.5	87.6	75.0	53.3	80.8	378.8	98.8
<i>October</i>	427.7	61.6	350.9	65.6	48.4	160.0	129.5	164.4	120.0
<i>November</i>	59.4	285.2	30.7	66.8	182.4	96.4	147.3	47.2	27.0

Section 14 – Crime Statistics & Fire Calls

Table 14.1 Crime statistics reported and recorded in Nevis, 2010-2018 (Source: RSKNPF, Div. B)

Crime Category	2010	2011	2012	2013	2014	2015	2016	2017	2018
Murder	5	6	3	10	5	8	5	9	5
Attempted Murder	3	0	0	1	2	0	2	6	6
Manslaughter	1	0	0	0	0	0	0	0	0
Wounding	15	17	7	19	9	8	14	3	0
Grievous Bodily Harm (Inflicting/Causing)	3	0	1	2	0	0	0	1	1
Wounding with intent (Other)	0	0	0	0	0	0	0	2	2
Wounding with intent (Firearm)	6	7	2	5	7	7	5	2	1
Rape	1	1	5	3	1	1	6	2	0
Unlawful Carnal knowledge	3	3	1	9	1	2	2	0	3
Defilement/Incest	0	2	0	0	0	0	0	0	0
Uttering of forged documents	0	2	0	3	0	3	0	0	0
Indecent Assault on Females	3	5	2	1	0	2	1	2	0
Assault with Intent to Rob	1	0	3	3	0	1	4	2	1
Robbery/Armed Robbery	13	18	25	18	29	14	11	8	16
House Breaking and Larceny (Residential)	0	64	70	91	43	32	23	32	23
House Breaking and Larceny (Commercial)	0	36	33	30	19	16	12	13	23
Housebreaking and Larceny (Other)	0	0	10	4	0	0	1	3	0
House Breaking with Intent (Residential)	0	0	17	10	10	4	4	6	7
House Breaking with Intent (Commercial)	0	13	2	3	3	3	0	3	0
House Breaking with Intent (Other)	0	0	0	0	0	0	0	0	0
Burglary	48	14	21	34	10	6	10	1	9
Sacrilege	0	0	0	2	1	1	1	0	1
Shooting with Intent	4	2	0	1	2	3	7	1	1
Larceny	36	58	45	50	42	29	32	29	23
Unlawful Possession	0	1	0	1	0	0	0	0	0
Receiving Stolen Goods	0	0	4	1	2	0	0	1	0
Obtaining Credit by Fraud	0	0	1	0	0	0	0	0	0
Causing death by Careless/Reckless or Dangerous Driving	0	1	0	0	0	0	0	0	0
Arson	0	2	0	2	2	0	1	0	0
Possession of Controlled Drugs	53	86	70	43	36	29	29	28	40
Possession with Intent to Supply	13	5	9	18	11	6	5	5	15
Importing Controlled Drugs	0	0	0	0	0	0	0	1	1
Cultivating of Controlled Drugs	6	4	3	5	3	2	1	0	0
Unlawful Possession of Firearms/Explosives	5	0	3	4	3	0	2	0	5
Unlawful Possession of Ammunition	6	3	5	5	3	1	2	4	5
Smuggling of Ammunition	0	0	0	0	0	0	0	1	1
Smuggling of Firearm	0	0	0	0	3	0	1	3	3
Fraudulent Conversion	0	0	3	2	0	1	1	0	0

False Pretenses	0	0	0	0	7	0	0	0	0
Embezzlement/Breach of Trust	0	0	0	0	1	0	0	0	0
Malicious Damage	0	31	18	12	30	6	18	14	9
Possession of Firearm with intent to endanger life	0	0	2	0	0	0	0	3	0
Other crime, danger to life or bodily harm	0	0	3	0	0	0	0	3	0
Abduction/Kidnapping	0	0	0	0	0	1	0	0	0
Indecent Assault on Males	0	0	0	0	0	1	0	1	0
Unnatural Offences (Buggery/Beastiality)	0	0	0	0	0	0	0	1	0
Found in enclosed premises	0	0	0	0	0	0	1	0	0
Forgery	0	0	0	0	0	0	1	1	0
Discharging a loaded firearm in a public place	0	0	0	0	0	0	0	0	1
Total	347	381	368	392	285	187	202	191	202

Table 14.2 Crime statistics – (committed under the Drug Act) reported and recorded in Nevis, 2010-2018

Offences	YEAR								
	2010	2011	2012	2013	2014	2015	2016	2017	2018
Possession of Controlled Drugs	53	86	70	43	36	29	29	28	40
Possession with Intent to Supply	13	5	9	18	11	6	5	5	15
Importing Controlled Drugs	0	4	0	0	0	0	0	1	1
Cultivation of Controlled Drugs	6	4	3	5	3	2	1	0	0
Unlawful Possession of Firearm/Explosives	5	0	3	4	3	0	2	0	5
Unlawful Possession of Ammunition	6	0	5	5	3	1	2	4	5
Smuggling of Firearm	0	0	0	0	3	0	1	3	3

(Source: RSKNPF, Div. B)

Table 14.3 Crime statistics – (violent crimes) reported and recorded in Nevis, 2010-2018

Offences	YEAR								
	2010	2011	2012	2013	2014	2015	2016	2017	2018
Murder	5	6	3	10	5	8	5	9	5
Attempted Murder	3	0	0	1	2	0	2	6	6
Wounding	15	17	7	19	9	8	14	3	0
Wounding with Intent	6	7	2	5	7	7	5	2	1
Shooting with Intent	4	2	0	1	2	3	7	1	1
Grievous Bodily Harm	3	0	1	2	0	0	0	1	1

(Source: RSKNPF, Div. B)

Table 14.4 Crime statistics – (committed against a person) reported and recorded in Nevis, 2010-2018

Offences	YEAR								
	2010	2011	2012	2013	2014	2015	2016	2017	2018
Rape	1	1	5	3	1	1	6	2	0
Malicious Damage	0	31	18	12	30	6	18	14	9
Abduction/Kidnapping	0	0	0	0	0	1	0	0	0
Indecent Assault on Males	0	0	0	0	0	1	0	1	0
Indecent Assault on Females	3	5	2	1	0	2	1	2	0

(Source: RSKNPF, Div. B)

Table 14.5 Crime statistics – (committed under the Larceny Act) reported and recorded in Nevis, 2010-2018

Offences	YEAR								
	2010	2011	2012	2013	2014	2015	2016	2017	2018
HB & L Res	63	64	70	91	43	32	23	32	23
HB & L Com	42	36	33	30	19	16	12	13	23
HB & L Other	0	0	10	4	0	0	0	3	0
HB WI Res	14	0	17	10	10	4	4	6	7
HB WI Com	0	13	2	3	3	0	0	3	0
HB WI Other	0	0	0	0	0	0	0	0	0
HB&L Res - House Breaking & Larceny (Residence), HB&L Com - House Breaking & Larceny (Commercial), HB&L Oth - House Breaking & Larceny (Other), HBWI Res - House Breaking with Intent (Residence)									

(Source: RSKNPF, Div. B)

Table 14.6 Crime statistics – (serious offences) reported and recorded in Nevis, 2010-2018

Offences	YEAR								
	2010	2011	2012	2013	2014	2015	2016	2017	2018
Robbery	-	8	2	3	2	1	1	2	2
Arm Robbery	-	10	23	15	27	13	10	6	4
Burglary	48	14	21	34	10	6	10	1	9
Larceny	36	58	45	50	42	29	32	29	23
Unlawful Possession	0	1	0	1	0	0	0	0	0
Receiving Stolen Goods	0	0	4	1	2	0	0	1	0
Assault with intent to Rob	1	0	3	3	0	1	4	2	1

(Source: RSKNPF, Div. B)

Fire Calls

Table 14.7 Number of fires by category broken down in Nevis, 2010-2018

<i>Year</i>	<i>Class A</i>	<i>Class B</i>	<i>Class C</i>	<i>False</i>	<i>Motor Vehicle Accident</i>	<i>Motor Vehicle</i>	<i>Bomb Threat</i>
2010	91	4	18	9	3	7	-
2011	120	1	9	18	3	6	-
2012	87	0	2	15	0	2	-
2013	112	3	3	20	3	4	-
2014	112	0	7	23	2	0	-
2015	105	0	7	13	0	0	-
2016	75	1	7	11	0	0	-
2017	73	1	6	10	2	3	-
2018	69	0	5	8	2	4	1

(Source: Fire Department, Nevis)

Table 14.8 Number of fire calls – Category A broken down in Nevis, 2010-2018

CLASS A - CATEGORY OF FIRE CALLS FOR THE PERIOD 2010 - 2018									
CATEGORY	2010	2011	2012	2013	2014	2015	2016	2017	2018
HOUSE	8	11	10	9	8	10	10	10	10
GRASS/BRUSH	57	82	41	47	45	33	10	10	23
TOOL SHED	-	-	-	4	1	0	0	0	0
GARBAGE	16	25	32	50	51	53	52	46	34
TYRES	-	-	-	2	-	-	-	-	-
COPPER	-	-	1	0	-	-	-	-	-
LAMP POLE	-	-	-	-	4	4	0	5	1
CONTAINER	-	-	-	-	-	1	0	0	1
VEHICLE	0	0	3	-	1	4	3	2	-
SMOKE DISTURBANCE	-	-	-	-	1	0	0	0	-
OTHER	9	2	0	0	-	-	-	-	-
STOVE	0	0	0	-	-	-	-	-	-
GOVERNMENT BUILDING	-	-	-	-	1	-	-	-	-

(Source: Fire Department, Nevis)

Table 14.9 Number of fire calls – Category B broken down in Nevis, 2010-2018

CLASS B									
CATEGORY	2010	2011	2012	2013	2014	2015	2016	2017	2018
KITCHEN	-	-	-	2	0	0	0	0	0
PROPANE	-	-	-	1	0	0	1	0	0
GAS LEAK	-	-	-	-	-	-	-	1	0
FUEL	3	1	0	-	-	-	-	-	-
OIL	1	0	0	-	-	-	-	-	-

(Source: Fire Department, Nevis)

Table 14.10 Number of fire calls – Category C broken down in Nevis, 2010-2018

CLASS C									
CATEGORY	2010	2011	2012	2013	2014	2015	2016	2017	2018
ELECTRICAL	18	9	2	3	7	7	7	6	5

(Source: Fire Department, Nevis)

END